

CATALOG NUMBER	
PROJECT NAME	TYPE
VOLTAGE	LAMPS

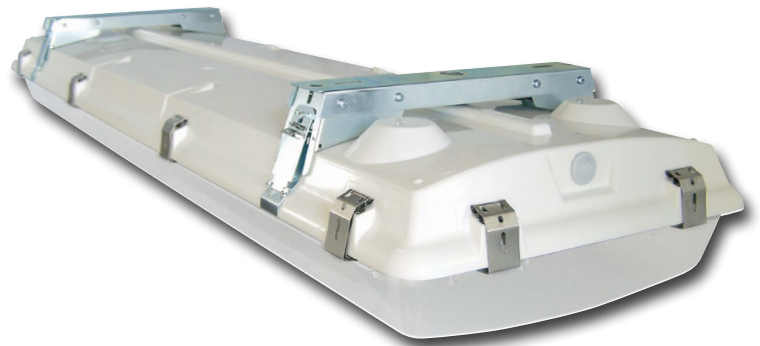


# BLIZZARD EXT

## EXTREME THERMAL MANAGEMENT

### SPECIFICATIONS

- Effective Heat Management System (Standard)
  - 6T5-120V with HMS 45°C/113°F Max Ambient
  - 6T5-277V with HMS 50°C/122°F Max Ambient
- V-Hooks for Chain or Cable Hanging (Standard)
- Optional Rigid Mounting Beam (RMB) allows for:
  - Secure Ceiling Mount or Dual Pendant Mount
- Fiberglass Body with Poured in Place Gasket
- Marine Grade 316 Stainless Steel (Standard) or Optional Secure Locking Plastic Latches/Hardware
- NSF
  - NEMA 4X - Indoor or Outdoor Use
  - IP67 - Dust and Liquid Protected
  - ROHS Compliant
  - High Pressure Hose Down 1500 PSI
- Clear Acrylic (Standard) or Polycarbonate Lens (PC)
- 95% Miro 4 Enhanced Aluminum Narrow Focus Reflectors
- High Ambient & Cold Start (-20° F) Ballasts Standard



### APPLICATIONS

- Coolers / Freezers
- Food Preparation
- Warehouse
- Distribution
- Manufacturing Plant

NEMA4X



## ORDERING GUIDE:

BLEXT	- 4T5	- UH	- WLOS
SERIES	LAMP	BALLAST	OPTIONS
<input type="checkbox"/> BLEXT - Blizzard with Extreme Thermal Management	<input type="checkbox"/> 3T5 - 3 F54 <input type="checkbox"/> 4T5 - 4 F54 <input type="checkbox"/> 5T5 - 5F54 <input type="checkbox"/> 6T5 - 6 F54  <input type="checkbox"/> 3T8 - 3 F32 <input type="checkbox"/> 4T8 - 4 F32 <input type="checkbox"/> 5T8 - 5 F32 <input type="checkbox"/> 6T8 - 6 F32	<input type="checkbox"/> UH - 120-277 T5HO <input type="checkbox"/> UH - 120-277 T8 HBF <input type="checkbox"/> PSH - Program Start T8 HBF <input type="checkbox"/> UR - 120-277 T8 NBF <input type="checkbox"/> PSN - Program Start T8 HBN <input type="checkbox"/> 4H - 347-480V (T5HO only, T8 use SD480)	<input type="checkbox"/> RMBSS - Rigid Mounting Beam (Stainless Steel) <input type="checkbox"/> RMBZP - Rigid Mounting Beam (Zinc Plated) <input type="checkbox"/> HB-XXX-18Y-PAD -Y Paddle Cable System, XXX = Length <input type="checkbox"/> SLPL -Secure Locking Plastic Latches <input type="checkbox"/> CORDX - Cord with a Wet Location Strain Relief, X=Length <input type="checkbox"/> PLUG - NEMA # <input type="checkbox"/> XXXXBBY - Battery Backup, XXXX = Total Lms Y = Lamps <input type="checkbox"/> PC - Polycarbonate Lens <input type="checkbox"/> FIWLOS - Factory Installed Wet Location Sensor <input type="checkbox"/> FIOS - Factory Installed Occupancy Sensor <input type="checkbox"/> FIOSPC - Factory Installed Occ Sensor with Integrated Photocell <input type="checkbox"/> LIXX - Lamps Installed XX = Lamp Color (ex. LI50 = 5000K) <input type="checkbox"/> EB - Extra Ballast <input type="checkbox"/> SD480 - 480V Step Down Transformer (T8 Only) <input type="checkbox"/> N - No Reflector For Wide Distribution

All T5 and T8 ballasts are cold start rated at -20° F



CATALOG NUMBER	
PROJECT NAME	TYPE
VOLTAGE	LAMPS

# BLIZZARD EXT

## EXTREME THERMAL MANAGEMENT



Straps w/ V-Hook

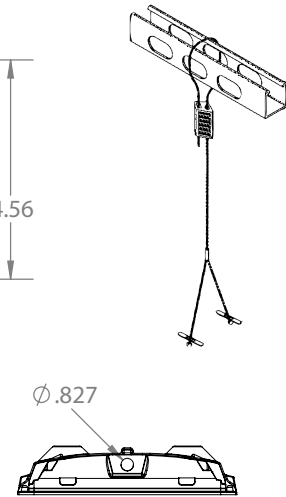
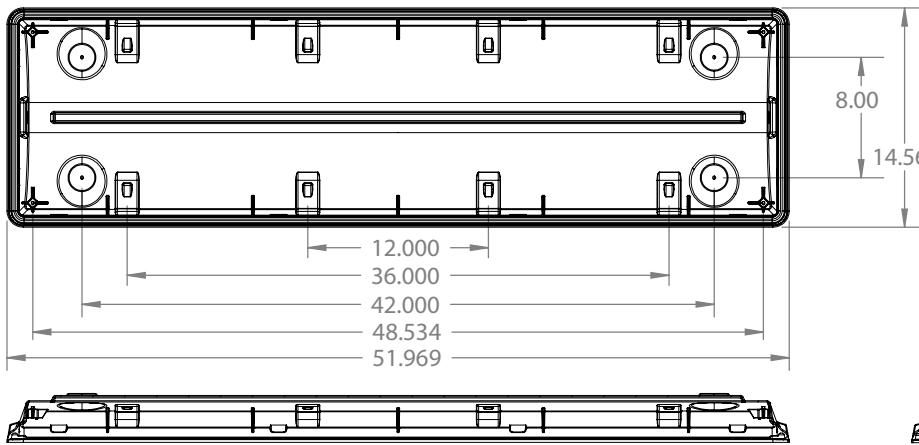


Rigid Mounting Beam

### MOUNTING OPTIONS

- V-Hooks (Std) for Dual Point Chain or Cable Hanging
- Optional Rigid Mounting Beam allows for:
  - Secure Ceiling Mount
  - Dual Pendant Mount (with 1/2" Conduit Hubs)
- HB-60-18Y-PAD - Y-Paddle Cables

HB-60-18Y-PAD



## BLEXT-6T5-UH

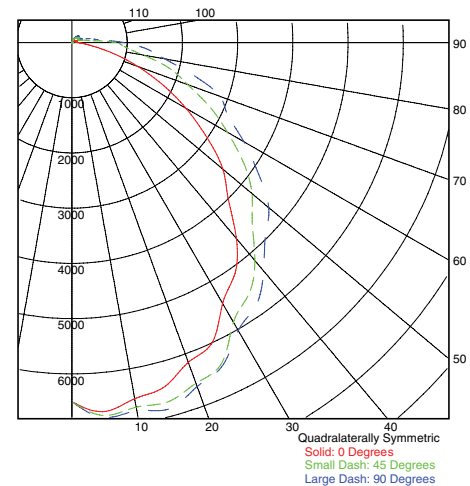
### Luminaire Properties

HEMISPHERES TESTED:	BOTH
EFFICIENCY (Total):	75.2 %
EFFICIENCY (Downlight):	71.9 %
EFFICIENCY (Uplight):	3.3 %
CIE CLASSIFICATION:	DIRECT
SPACING CRITERION (0-Deg.):	1.25
SPACING CRITERION (90-Deg.):	1.38
LUMENS/LAMP:	4900
NO. OF LAMPS:	6
LUMINOUS OPENING: RECTANGULAR	
Width:	1.13 (Feet)
Length:	4.23
Height:	0.25
INPUT WATTS:	321

### Zonal Lumen Summary

Zone	Lumens	% Lamp	% Luminaire
0 - 30	5413.5	18.4	24.5
0 - 40	8885.7	30.2	40.2
0 - 60	15744.3	53.6	71.2
60 - 90	5398.2	18.4	24.4
0 - 90	21142.6	71.9	95.6
70 - 100	3221.6	11.0	14.6
90 - 120	726.1	2.5	3.3
90 - 180	966.6	3.3	4.4
0 - 180	22109.2	75.2	100.0

### Candela Plot



### Coefficients of Utilization

Pcc ...	80			70			50			30			10			0		
Pw ...	70	50	30	10	70	50	30	10	50	30	10	50	30	10	50	30	10	0
RCR																		
0	.89	.89	.89	.89	.86	.86	.86	.86	.82	.82	.82	.78	.78	.78	.74	.74	.74	.72
1	.80	.76	.72	.69	.78	.74	.71	.68	.70	.67	.65	.67	.64	.62	.63	.62	.60	.58
2	.72	.66	.60	.56	.70	.64	.59	.55	.61	.57	.53	.58	.54	.51	.55	.52	.50	.48
3	.66	.58	.51	.46	.64	.56	.50	.45	.53	.48	.44	.51	.47	.43	.48	.45	.42	.40
4	.60	.51	.44	.39	.58	.50	.43	.38	.47	.42	.37	.45	.40	.37	.43	.39	.36	.34
5	.55	.45	.38	.33	.53	.44	.38	.33	.42	.37	.32	.40	.35	.32	.39	.34	.31	.29
6	.51	.41	.34	.29	.49	.40	.33	.29	.38	.32	.28	.37	.32	.28	.35	.31	.27	.25
7	.47	.37	.30	.26	.46	.36	.30	.25	.35	.29	.25	.33	.28	.24	.32	.28	.24	.22
8	.44	.34	.27	.23	.43	.33	.27	.23	.32	.26	.22	.31	.26	.22	.29	.25	.22	.20
9	.41	.31	.25	.20	.40	.30	.24	.20	.29	.24	.20	.28	.23	.20	.27	.23	.19	.18
10	.39	.28	.22	.18	.37	.28	.22	.18	.27	.22	.18	.26	.21	.18	.25	.21	.18	.16