



LED COMMERCIAL



“Your Number One Source
For Energy Efficient Lighting”



Table Of Contents

EasySense Compatible Guide	2
EasySense Control	3-4
BOB - Bolt On Board 2BD-24W / 3BD-24W / 3BD-30W / 4BD-30W / 4BD-36W / 4BD-42W / 6BD-60W	5
BIF - Built In Frame 2x2-25W / 2x2-30W / 2x4-30W / 2x4-37W / 2x4-43W	6
LANCE 1x4 - Latch And Close 13W / 22W / 30W / 35W / 42W / 52W / 59W	7
LANCE 2x2 - Latch And Close 16W / 22W / 30W / 35W / 42W / 52W	8
LANCE 2x4 - Latch And Close 22W / 30W / 35W / 42W / 52W / 59W	9
FLTR - Flat Lens Troffer Retrofit 1x4, 2x2, & 2x4 1x4 19W-45W / 2x2 19W-45W / 2x4 26W-45W	10-12
VOL - Volumetric Troffers 2x2-24W / 2x2-36W / 2x4-30W / 2x4-42W / 2x4-68W	13
VOLA 1x4 16W / 22W / 30W / 35W / 42W / 52W / 59W	14
VOLA 2x2 16W / 22W / 30W / 35W / 42W / 52W	15
VOLA 2x4 24W / 30W / 35W / 42W / 52W / 59W	16
FLT - Flat Lens Troffer 1x4, 2x2, & 2x4 1x4 19W-45W / 2x2 19W-45W / 2x4 26W-45W	17-19
FZ 4FT & 8FT Series Product Line 4ft-16W / 4ft-22W / 4ft-30W / 4ft-45W / 4ft-59W / 8ft-32W / 8ft-44W / 8ft-60W / 8ft-80W / 8ft-88W / 8ft-118W	20-21
RZ 4FT & 8FT Series Product Line 4ft-16W / 4ft-22W / 4ft-30W / 4ft-45W / 4ft-59W / 8ft-32W / 8ft-44W / 8ft-60W / 8ft-80W / 8ft-88W / 8ft-118W	22-23
Low Profile Channel 2FT, 4FT,hhz & 8FT 2ft-20W / 2ft-30W / 4ft-30W / 4ft-40W / 4ft-60W / 4ft-80W / 8ft-60W / 8ft-80W / 8ft-100W / 8ft-160W	24-25
FWS 4ft-20W / 4ft-30W / 4ft-40W / 4ft-55W / 4ft-70W / 8ft-40W / 8ft-55W / 8ft-80W	26
FWN 4ft-40W / 4ft-80W / 8ft-80W / 8ft-160W	27
FWC 4ft-40W / 4ft-80W / 8ft-80W / 8ft-160W	28
Cavern & Cavern Lite 2ft-20W / 2ft-30W / 4ft-30W / 4ft-40W / 4ft-60W / 4ft-80W	29

EasySense Compatible Product Guide



LANCE - Latch And Close



Applications

7-9

- 1x4
- 2x2
- 2x4
- Parabolic Louvers
- Prismatic Lenses

FLT & FLTR - Recessed Troffer



Applications

10-12 / 17-19

- Offices
- Hallways
- Multipurpose Rooms
- Conference Rooms

VOLA - Volumetric Troffer



Applications

14-16

- Offices
- Hallways
- Multipurpose Rooms
- Conference Rooms

FZ & RZ - Low Profile Strip & Retrofit



Applications

20-23

- Schools
- Warehouses
- Distribution Centers
- Retail Applications
- Manufacturing Facilities
- Hallways

FWS - Shallow Wrap



Applications

26

- Offices
- Hallways
- Multipurpose Rooms
- Work Station Task Lighting



Controls Made Easy

Ideal solution for dramatically improving energy savings in commercial, educational, retail, and office environments by giving you the power to manually adjust the maximum light output, hold time once motion is detected, background light level when space is unoccupied, fade time between occupied to background light level, and prolong time of background light level before switching off. All of these functions can be easily configured from the palm of your hand using the enabled App from your NFC Android smart phone / tablet.

Features / Benefits

- Compact Occupancy / Daylight Harvesting In One Device
- Enabled App Allows You Complete Control Over:
 - Turning On / Off Occupancy And / Or DayLight Functions
 - Setting Maximum Lumen Output (100% - 5%)
 - Hold Time Once Motion Is Detected (1 - 60 minutes)
 - Background Light Level When Space Is Unoccupied (5 - 100%)
 - Length Of Time Dimming From On To Background (0 - 25 Sec.)
 - Prolong Amount Of Time Background Level Lasts. (0-∞ minutes)
- Time To On / Off Light Levels At 0.7 Seconds
- Easily Controlled Via NFC Enabled Android Smart Phone / Tablet
- Saved Program Profiles Allows For Easy Commissioning Of Multiple Zones
- Control Up To (4) Fixtures Per One Control
- Complies With Title 20 And Title 24 Requirements

Available With:

- VOLA
- LANCE
- FZ
- RZ
- FLT
- FLTR
- FWS

Part Number:

ES:

Sensor with sensor ready driver factory installed.

SR:

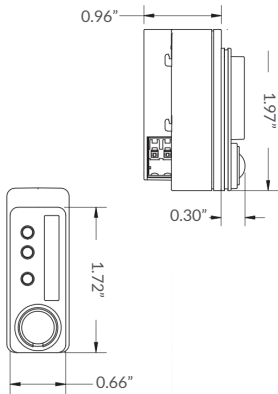
Sensor Ready Driver installed without sensor, for grouping units together. Max units tied to 1 ES unit = 4

ES/PCD:

Pre-installed App on control device for commissioning. (1) per install needed, unless you have NFC Android enabled phone/tablet.

Product Specifications

Dimensions



EasySense Overview



LED Indicator Lights



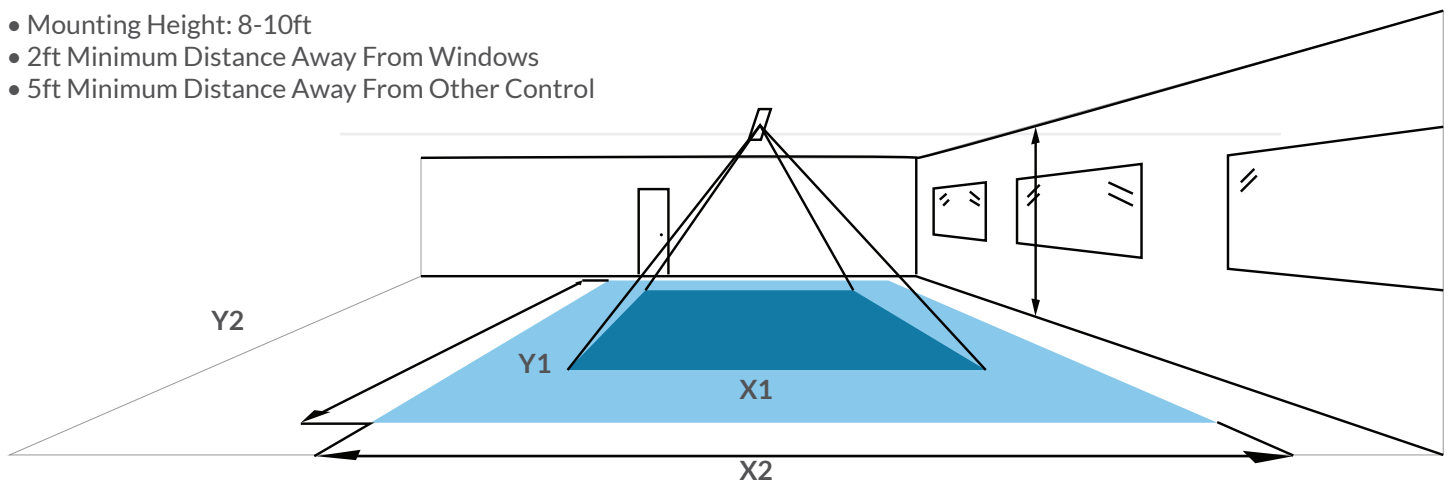
Yellow LED On=
Vacancy & Sensor Is
Functional



Red LED On=
Motion Is Detected And
Hold Time Is Not Expired
Yet

Installation Recommendations:

- Mounting Height: 8-10ft
- 2ft Minimum Distance Away From Windows
- 5ft Minimum Distance Away From Other Control

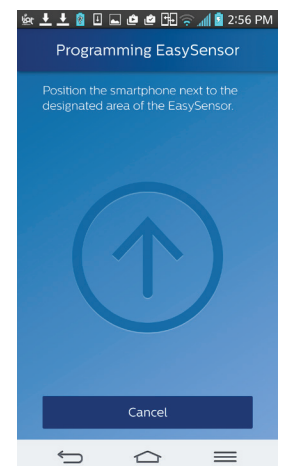
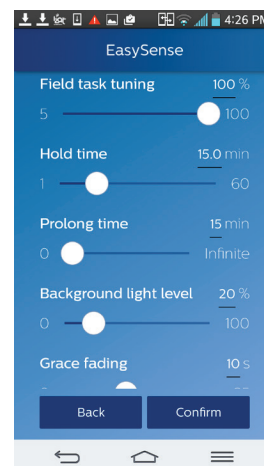
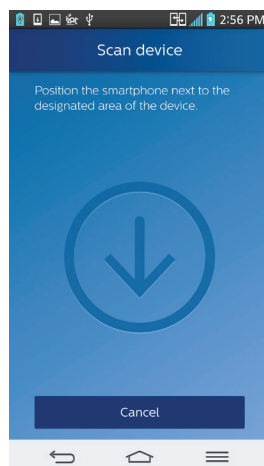


When installed in a typical office ceiling H, the sensor is sensitive to minor movements within X1 by Y1 area. It will cover minor movements down to a few centimeters at the task area of a desk and is sensitive to major movements within a range of X2 by Y2.

EasySense App Configuration

Program Steps

1. Scan Device
2. Turn On/Off Functions
3. Set Control Levels
4. Save Profile For Multi Use
5. Scan Device



*For more information and list of compatible phones visit [website](http://www.ilp-inc.com)

RETROFIT

BOB - Bolt On Board



Specifications:

- LED Board And Driver Kits For Recessed Lighting Applications
- ETL Listed As An LED Retrofit Kit (UL1598C) For 2x2, 2x4, & 1x4 Troffers
- 3000K, 3500K, 4000K, & 5000K Colors Available
- Diffuse Light With Optional Frosted Sheet (Contact Factory)
- Multiple Light Outputs
- Dimmable Philips Drivers (0-10V)
- Philips LED Boards
- 5 Yr. Warranty
- All Necessary Hardware Included:
 - Ballast Disconnect
 - Self Tapping Screws
 - Jumper Wires
 - Power Wires
 - Ground Wires
 - Wire Nuts
 - Ground And Rating Labels
- DesignLights Consortium™ Qualified Luminaire

Applications

- 2x2's
- 2x4's
- 1x4's
- Parabolic Louvers
- Prismatic Louvers

Performance Guide

Part #	Wattage	Lumens	Lm/W	L70	CRI
BOB-24WLED-2BD-UNIV-4000K	24	2,165	89	>100	>80
BOB-24WLED-3BD-UNIV-4000K	23	2,406	103	>100	>80
BOB-30WLED-3BD-UNIV-4000K	29	2,943	99	>100	>80
BOB-30WLED-4BD-UNIV-4000K	29	2,910	98	>100	>80
BOB-36WLED-4BD-UNIV-4000K	35	3,354	94	>100	>80
BOB-42WLED-4BD-UNIV-4000K	41	4,166	100	>100	>80
BOB-60WLED-6BD-UNIV-4000K	59	5,962	101	>100	>80

Lm/W = Lumens Per Watt

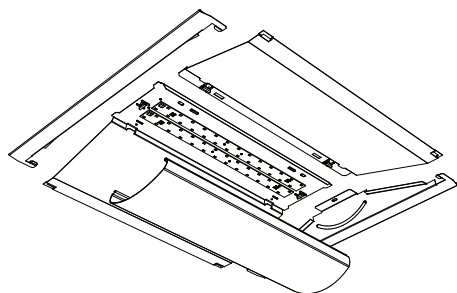
Options

Accessories

- ADH Factory Installed Adhesive
- PW Pre-Wired And Assembled Kit From Factory
- FI/ILBCP05 5W LED Field Wired Battery Backup
- FI/ILBCP07 7W LED Field Wired Battery Backup
- FI/ILBCP10 10W LED Field Wired Battery Backup
- FI/ILBCP12 12W LED Field Wired Battery Backup

RETROFIT

BIF - Built In Frame



Specifications:

- Upgrade Any 2x2 or 2x4 Fluorescent Troffer To LED With Modern Architectural Styling
- 24 LEDs Per Module Spaced 3/4 Inch Apart Results In Low Pixilation
- No Tools Required For Easy Installation Into The Existing Fixture Housing
- 0-10V Dimmable Driver (100% - 1%)
- Available In 4000K
- 5 Yr. Warranty
- DesignLights Consortium™ Qualified Luminaire

Applications

- 2x2's
- 2x4's
- Parabolic Louvers
- Prismatic Louvers

Performance Guide

Part #	Wattage	Lumens	Lm/W	L70	CRI
BIF22-25WLED-UNIV-40	25	2,447	98	>100	>80
BIF22-30WLED-UNIV-40	30	3,017	100	>100	>80
BIF24-30WLED-UNIV-40	30	3,162	105	>100	>80
BIF24-37WLED-UNIV-40	37	4,062	109	>100	>80
BIF24-43WLED-UNIV-40	43	4,499	105	>100	>80

Lm/W = Lumens Per Watt

Options

Accessories

- ILBCP05 5W LED Field Wired Battery Backup
- ILBCP07 7W LED Field Wired Battery Backup
- ILBCP10 10W LED Field Wired Battery Backup
- ILBCP12 12W LED Field Wired Battery Backup

RETROFIT

LANCE 1x4 - Latch And Close



Specifications:

- LED Retrofit Kit For Recessed Lighting Applications
- One-Piece Unit With Two Universal Mounting Brackets
- Universal Brackets Allow For Install In Grid Or Hard Lid Ceilings
- Multiple Lumen Outputs Available
- 3000K, 3500K, 4000K, And 5000K Available
- 0-10V Dimmable Driver
- EasySense Control Available
- Philips Light Engines
- 5 Yr. Warranty
- DesignLights Consortium™ Qualified Luminaire

Applications

- 1x4
- Parabolic Louvers
- Prismatic Lenses

Performance Guide

Part #	Wattage	Lumens	Lm/W	L70	CRI	DLC Premium
LANCE14-13WLED-UNIV-40	13	1,579	116	>100K	>80	
LANCE14-22WLED-UNIV-40	22	2,705	120	>100K	>80	•
LANCE14-30WLED-UNIV-40	30	3,545	117	>100K	>80	•
LANCE14-35WLED-UNIV-40	35	4,042	114	>100K	>80	•
LANCE14-42WLED-UNIV-40	42	4,765	112	>100K	>80	•
LANCE14-52WLED-UNIV-40	52	6,215	120	>100K	>80	•
LANCE14-59WLED-UNIV-40	59	6,904	117	>100K	>80	•

Lm/W = Lumens Per Watt

Options

Accessories

- POSTP Post Painted Aluminum
 FI/ILBCP05 5W LED Factory Wired Battery Backup
 FI/ILBCP07 7W LED Factory Wired Battery Backup
 FI/ILBCP10 10W LED Factory Wired Battery Backup
 FI/ILBCP12 12W LED Factory Wired Battery Backup

Controls

- ES EasySense Control
 SR Sensor Ready Driver For ES
 ES/PCD Pre-Installed App On Controlled Device For Commissioning

RETROFIT

LANCE 2x2 - Latch And Close



Specifications:

- LED Retrofit Kit For Recessed Lighting Applications
- One-Piece Unit With Two Universal Mounting Brackets
- Universal Brackets Allow For Install In Grid Or Hard Lid Ceilings
- Multiple Lumen Outputs Available
- 3000K, 3500K, 4000K, And 5000K Available
- 0-10V Dimmable Driver
- EasySense Control Available
- Philips Light Engines
- 5 Yr. Warranty
- DesignLights Consortium™ Qualified Luminaire



Applications

- 2x2
- Parabolic Louvers
- Prismatic Lenses

Performance Guide

Part #	Wattage	Lumens	Lm/W	L70	CRI	DLC Premium
LANCE22-16WLED-UNIV-40	16	1,889	112	>100K	>80	
LANCE22-22WLED-UNIV-40	22	2,490	109	>100K	>80	•
LANCE22-30WLED-UNIV-40	30	3,148	108	>100K	>80	
LANCE22-35WLED-UNIV-40	35	3,650	105	>100K	>80	
LANCE22-42WLED-UNIV-40	42	4,766	112	>100K	>80	•
LANCE22-52WLED-UNIV-40	52	6,128	117	>100K	>80	•

Lm/W = Lumens Per Watt

Options

Accessories

- POSTP Post Painted Aluminum
- FI/ILBCP05 5W LED Factory Wired Battery Backup
- FI/ILBCP07 7W LED Factory Wired Battery Backup
- FI/ILBCP10 10W LED Factory Wired Battery Backup
- FI/ILBCP12 12W LED Factory Wired Battery Backup

Controls

- ES EasySense Control
- SR Sensor Ready Driver For ES
- ES/PCD Pre-Installed App On Controlled Device For Commissioning

RETROFIT

LANCE 2x4 - Latch And Close



Specifications:

- LED Retrofit Kit For Recessed Lighting Applications
- One-Piece Unit With Two Universal Mounting Brackets
- Universal Brackets Allow For Install In Grid Or Hard Lid Ceilings
- Multiple Lumen Outputs Available
- 3000K, 3500K, 4000K, And 5000K Available
- 0-10V Dimmable Driver
- EasySense Control Available
- Philips Light Engines
- 5 Yr. Warranty
- DesignLights Consortium™ Qualified Luminaire



Applications

- 2x4
- Parabolic Louvers
- Prismatic Lenses

Performance Guide

Part #	Wattage	Lumens	Lm/W	L70	CRI	DLC Premium
LANCE24-22WLED-UNIV-40	22	2,950	123	>100K	>80	
LANCE24-30WLED-UNIV-40	30	3,766	124	>100K	>80	•
LANCE24-35WLED-UNIV-40	35	4,256	121	>100K	>80	•
LANCE24-42WLED-UNIV-40	42	4,960	116	>100K	>80	•
LANCE24-52WLED-UNIV-40	52	6,454	121	>100K	>80	•
LANCE24-59WLED-UNIV-40	59	7,265	123	>100K	>80	•

Lm/W = Lumens Per Watt

Options

Accessories

- POSTP Post Painted Aluminum
- FI/ILBCP05 5W LED Factory Wired Battery Backup
- FI/ILBCP07 7W LED Factory Wired Battery Backup
- FI/ILBCP10 10W LED Factory Wired Battery Backup
- FI/ILBCP12 12W LED Factory Wired Battery Backup

Controls

- ES EasySense Control
- SR Sensor Ready Driver For ES
- ES/PCD Pre-Installed App On Controlled Device For Commissioning

RETROFIT

FLTR - 1x4 Flat Lens Troffer Retrofit



Specifications:

- Architectural Design
- Universal Brackets Allow For Install In Grid Or Hard Lid Ceilings
- Flat Frosted Acrylic Lens
- .040 Aluminum Pre-Painted Housing
- Post Paint Available
- 3000K, 3500K, & 4000K Colors Available
- 0-10V Dimmable Driver (100% - 5%)
- EasySense Control Available
- Multiple Wattage Options Ranging From 19W-45W
- Universal Voltage
- 5 Yr. Warranty
- DesignLights Consortium™ Premium Qualified Luminaire

Applications

- Offices
- Hallways
- Multipurpose Rooms
- Conference Rooms

Performance Guide

Part #	Wattage	Lumens	Lm/W	L70	CRI
FLTR14-19WLED-UNIV-40	19	2,341	125	>100	>80
FLTR14-30WLED-UNIV-40	30	3,609	120	>100	>80
FLTR14-45WLED-UNIV-40	45	5,137	114	>100	>80

Lm/W = Lumens Per Watt

Options

Accessories

- POSTP Post Painted Aluminum
- FI/ILBCP05 5W LED Factory Wired Battery Backup
- FI/ILBCP07 7W LED Factory Wired Battery Backup
- FI/ILBCP10 10W LED Factory Wired Battery Backup
- FI/ILBCP12 12W LED Factory Wired Battery Backup
- SD480 480V Step Down Transformer

Controls

- ES EasySense Control
- SR Sensor Ready Driver For ES
- ES/PCD Pre-Installed App On Controlled Device For Commissioning

RETROFIT

FLTR - 2x2 Flat Lens Troffer Retrofit



Specifications:

- Architectural Design
- Universal Brackets Allow For Install In Grid Or Hard Lid Ceilings
- Flat Frosted Acrylic Lens
- .040 Aluminum Pre-Painted Housing
- Post Paint Available
- 3000K, 3500K, & 4000K Colors Available
- 0-10V Dimmable Driver (100% - 5%)
- EasySense Control Available
- Multiple Wattage Options Ranging 19W-45W
- Universal Voltage
- 5 Yr. Warranty
- DesignLights Consortium™ Premium Qualified Luminaire

Applications

- Offices
- Hallways
- Multipurpose Rooms
- Conference Rooms

Performance Guide

Part #	Wattage	Lumens	Lm/W	L70	CRI
FLTR22-19WLED-UNIV-40	19	2,217	118	>100	>80
FLTR22-30WLED-UNIV-40	30	3,385	113	>100	>80
FLTR22-45WLED-UNIV-40	45	4,735	107	>100	>80

Lm/W = Lumens Per Watt

Options

Accessories

- POSTP Post Painted Aluminum
- FI/ILBCP05 5W LED Factory Wired Battery Backup
- FI/ILBCP07 7W LED Factory Wired Battery Backup
- FI/ILBCP10 10W LED Factory Wired Battery Backup
- FI/ILBCP12 12W LED Factory Wired Battery Backup
- SD480 480V Step Down Transformer

Controls

- ES EasySense Control
- SR Sensor Ready Driver For ES
- ES/PCD Pre-Installed App On Controlled Device For Commissioning

RETROFIT

FLTR - 2x4 Flat Lens Troffer Retrofit



Specifications:

- Architectural Design
- American Made
- Flat Frosted Acrylic Lens
- .040 Aluminum Pre-Painted Housing
- Post Paint Available
- 3000K, 3500K, & 4000K Colors Available
- 0-10V Dimmable Driver (100% - 5%)
- EasySense Control Available
- Multiple Wattage Options Ranging From 26W-45W
- Universal Voltage
- 5 Yr. Warranty
- DesignLights Consortium™ Premium Qualified Luminaire

Applications

- Offices
- Hallways
- Multipurpose Rooms
- Conference Rooms

Performance Guide

Part #	Wattage	Lumens	Lm/W	L70	CRI
FLTR24-26WLED-UNIV-40	26	3,168	124	>100	>80
FLTR24-35WLED-UNIV-40	35	4,171	119	>100	>80
FLTR24-45WLED-UNIV-40	45	5,140	115	>100	>80

Lm/W = Lumens Per Watt

Options

Accessories

POSTP	Post Painted Aluminum
FI/ILBCP05	5W LED Factory Wired Battery Backup
FI/ILBCP07	7W LED Factory Wired Battery Backup
FI/ILBCP10	10W LED Factory Wired Battery Backup
FI/ILBCP12	12W LED Factory Wired Battery Backup
SD480	480V Step Down Transformer

Controls

ES	EasySense Control
SR	Sensor Ready Driver For ES
ES/PCD	Pre-Installed App On Controlled Device For Commissioning

TROFFER

VOL - Volumetric Troffer



Specifications:

- Architectural Design
- Steel Housing
- White Powder Coat Finish
- 91% White Reflector
- Polycarbonate Frosted Lens
- 0-10V Dimmable Driver (100% - 1%, Except 68W 100% - 5%)
- Universal Voltage
- 5 Yr. Warranty
- DesignLights Consortium™ Qualified Luminaire



Applications

- Offices
- Hallways
- Multipurpose Rooms

Performance Guide

Part #	Wattage	Lumens	Lm/W	L70	CRI
VOL22-24WLED-UNIV-35	24	2,210	93	>100K	>80
VOL22-24WLED-UNIV-40	24	2,292	96	>100K	>80
VOL22-36WLED-UNIV-35	36	3,440	96	>100K	>80
VOL22-36WLED-UNIV-40	36	3,510	98	>100K	>80
VOL24-30WLED-UNIV-35	30	3,300	110	>100K	>80
VOL24-30WLED-UNIV-40	30	3,470	116	>100K	>80
VOL24-42WLED-UNIV-35	42	4,389	105	>100K	>80
VOL24-42WLED-UNIV-40	42	4,410	105	>100K	>80
VOL24-68WLED-UNIV-40	68	6,804	101	>100K	>80

Lm/W = Lumens Per Watt

Options

Accessories

- FI/ILBCP05 5W LED Factory Wired Battery Backup
- FI/ILBCP07 7W LED Factory Wired Battery Backup
- FI/ILBCP10 10W LED Factory Wired Battery Backup
- FI/ILBCP12 12W LED Factory Wired Battery Backup

Mounting

- FLGK Flange Kit

TROFFER

VOLA - 1x4 Volumetric Troffer



Specifications:

- Architectural Design
- Recessed Or Surface Mount
- Flange Kit Available
- .040 Aluminum Pre-Painted Housing
- Post Paint Available
- Frosted Acrylic Lens Easily Removes For Cleaning
- 3000K, 3500K, & 4000K Colors Available
- 0-10V Dimmable Driver (100%-5%)
- EasySense Control Available
- Universal Voltage
- 5 Yr. Warranty
- DesignLights Consortium™ Qualified Luminaire

Applications

- Offices
- Hallways
- Multipurpose Rooms
- Conference Rooms

Performance Guide

Part #	Wattage	1x4 Lm	1x4 Lm/W	L70	CRI
VOLA14-16WLED-UNIV-40	16	1,954	120	>100K	>80
VOLA14-22WLED-UNIV-40	22	2,799	125	>100K	>80
VOLA14-30WLED-UNIV-40	30	3,672	122	>100K	>80
VOLA14-35WLED-UNIV-40	35	4,082	116	>100K	>80
VOLA14-42WLED-UNIV-40	42	4,832	116	>100K	>80
VOLA14-52WLED-UNIV-40	52	6,542	124	>100K	>80
VOLA14-59WLED-UNIV-40	59	7,083	121	>100K	>80

Lm/W = Lumens Per Watt

Options

Accessories

- POSTP Post Painted Aluminum
 FI/ILBCP05 5W LED Factory Wired Battery Backup
 FI/ILBCP07 7W LED Factory Wired Battery Backup
 FI/ILBCP10 10W LED Factory Wired Battery Backup
 FI/ILBCP12 12W LED Factory Wired Battery Backup
 SD480 480V Step Down Transformer

Controls

- ES EasySense Control
 SR Sensor Ready Driver For ES
 ES/PCD Pre-Installed App On Controlled Device For Commissioning

Mounting

- FLGK Flange Kit
 SM Surface Mount

TROFFER

VOLA - 2x2 Volumetric Troffer



Specifications:

- Architectural Design
- Recessed Or Surface Mount
- Flange Kit Available
- .040 Aluminum Pre-Painted Housing
- Post Paint Available
- Frosted Acrylic Lens Easily Removes For Cleaning
- 3000K, 3500K, & 4000K Colors Available
- 0-10V Dimmable Driver (100%-5%)
- EasySense Control Available
- Universal Voltage
- 5 Yr. Warranty
- DesignLights Consortium™ Qualified Luminaire

Applications

- Offices
- Hallways
- Multipurpose Rooms
- Conference Rooms

Performance Guide

Part #	Wattage	Lumens	Lm/W	L70	CRI	DLC Premium
VOLA22-16WLED-UNIV-40	16	1,990	123	>100K	>80	•
VOLA22-22WLED-UNIV-40	22	2,709	118	>100K	>80	•
VOLA22-30WLED-UNIV-40	30	3,462	116	>100K	>80	•
VOLA22-35WLED-UNIV-40	35	3,927	113	>100K	>80	
VOLA22-42WLED-UNIV-40	42	4,915	117	>100K	>80	•
VOLA22-52WLED-UNIV-40	52	6,492	123	>100K	>80	•

Lm/W = Lumens Per Watt

Options

Accessories

- POSTP Post Painted Aluminum
- FI/ILBCP05 5W LED Factory Wired Battery Backup
- FI/ILBCP07 7W LED Factory Wired Battery Backup
- FI/ILBCP10 10W LED Factory Wired Battery Backup
- FI/ILBCP12 12W LED Factory Wired Battery Backup
- SD480 480V Step Down Transformer

Controls

- ES EasySense Control
- SR Sensor Ready Driver For ES
- ES/PCD Pre-Installed App On Controlled Device For Commissioning

Mounting

- FLGK Flange Kit
- SM Surface Mount

TROFFER

VOLA - 2x4 Volumetric Troffer



Specifications:

- Architectural Design
- Recessed Or Surface Mount
- Flange Kit Available
- .040 Aluminum Pre-Painted Housing
- Post Paint Available
- Frosted Acrylic Lens Easily Removes For Cleaning
- 3000K, 3500K, & 4000K Colors Available
- 0-10V Dimmable Driver (100%-5%)
- EasySense Control Available
- Universal Voltage
- 5 Yr. Warranty
- DesignLights Consortium™ Qualified Luminaire

Applications

- Offices
- Hallways
- Multipurpose Rooms
- Conference Rooms

Performance Guide

Part #	Wattage	Lumens	Lm/W	L70	CRI
VOLA24-24WLED-UNIV-40	24	2,953	128	>100K	>80
VOLA24-30WLED-UNIV-40	30	3,774	125	>100K	>80
VOLA24-35WLED-UNIV-40	35	4,271	121	>100K	>80
VOLA24-42WLED-UNIV-40	42	4,985	119	>100K	>80
VOLA24-52WLED-UNIV-40	52	6,923	130	>100K	>80
VOLA24-59WLED-UNIV-40	59	7,532	128	>100K	>80

Lm/W = Lumens Per Watt

Options

Accessories

- POSTP Post Painted Aluminum
- FI/ILBCP05 5W LED Factory Wired Battery Backup
- FI/ILBCP07 7W LED Factory Wired Battery Backup
- FI/ILBCP10 10W LED Factory Wired Battery Backup
- FI/ILBCP12 12W LED Factory Wired Battery Backup
- SD480 480V Step Down Transformer

Controls

- ES EasySense Control
- SR Sensor Ready Driver For ES
- ES/PCD Pre-Installed App On Controlled Device For Commissioning

Mounting

- FLGK Flange Kit
- SM Surface Mount

TROFFER

FLT - 1x4 Flat Lens Troffer



Specifications:

- Architectural Design
- Flat Frosted Acrylic Lens
- .040 Aluminum Pre-Painted Housing
- Post Paint Available
- 3000K, 3500K, & 4000K Colors Available
- 0-10V Dimmable Driver (100% - 5%)
- EasySense Control Available
- Multiple Wattage Options Ranging From 19W-45W
- Universal Voltage
- 5 Yr. Warranty
- DesignLights Consortium™ Premium Qualified Luminaire

Applications

- Offices
- Hallways
- Multipurpose Rooms
- Conference Rooms

Performance Guide

Part #	Wattage	Lumens	Lm/W	L70	CRI
FLT14-19WLED-UNIV-40	19	2,341	125	>100	>80
FLT14-30WLED-UNIV-40	30	3,609	120	>100	>80
FLT14-45WLED-UNIV-40	45	5,137	114	>100	>80

Lm/W = Lumens Per Watt

Options

Accessories

- POSTP Post Painted Aluminum
- FI/ILBCP05 5W LED Factory Wired Battery Backup
- FI/ILBCP07 7W LED Factory Wired Battery Backup
- FI/ILBCP10 10W LED Factory Wired Battery Backup
- FI/ILBCP12 12W LED Factory Wired Battery Backup
- SD480 480V Step Down Transformer

Controls

- ES EasySense Control
- SR Sensor Ready Driver For ES
- ES/PCD Pre-Installed App On Controlled Device For Commissioning

Mounting

- SM Surface Mount
- FLGK Flange Kit

TROFFER

FLT - 2x2 Flat Lens Troffer



Specifications:

- Architectural Design
- Flat Frosted Acrylic Lens
- .040 Aluminum Pre-Painted Housing
- Post Paint Available
- 3000K, 3500K, & 4000K Colors Available
- 0-10V Dimmable Driver (100% - 5%)
- EasySense Control Available
- Multiple Wattage Options Ranging From 19W-45W
- Universal Voltage
- 5 Yr. Warranty
- DesignLights Consortium™ Premium Qualified Luminaire

Applications

- Offices
- Hallways
- Multipurpose Rooms
- Conference Rooms

Performance Guide

Part #	Wattage	Lumens	Lm/W	L70	CRI
FLT22-19WLED-UNIV-40	19	2,217	118	>100	>80
FLT22-30WLED-UNIV-40	30	3,385	113	>100	>80
FLT22-45WLED-UNIV-40	45	4,735	107	>100	>80

Lm/W = Lumens Per Watt

Options

Accessories

- POSTP Post Painted Aluminum
- FI/ILBCP05 5W LED Factory Wired Battery Backup
- FI/ILBCP07 7W LED Factory Wired Battery Backup
- FI/ILBCP10 10W LED Factory Wired Battery Backup
- FI/ILBCP12 12W LED Factory Wired Battery Backup
- SD480 480V Step Down Transformer

Controls

- ES EasySense Control
- SR Sensor Ready Driver For ES
- ES/PCD Pre-Installed App On Controlled Device For Commissioning

Mounting

- SM Surface Mount
- FLGK Flange Kit

TROFFER

FLT - 2x4 Flat Lens Troffer



Specifications:

- Architectural Design
- Flat Frosted Acrylic Lens
- .040 Aluminum Pre-Painted Housing
- Post Paint Available
- 3000K, 3500K, & 4000K Colors Available
- 0-10V Dimmable Driver (100% - 5%)
- EasySense Control Available
- Multiple Wattage Options Ranging From 26W-45W
- Universal Voltage
- 5 Yr. Warranty
- DesignLights Consortium™ Premium Qualified Luminaire

Applications

- Offices
- Hallways
- Multipurpose Rooms
- Conference Rooms

Performance Guide

Part #	Wattage	Lumens	Lm/W	L70	CRI
FLT24-26WLED-UNIV-40	26	3,168	124	>100	>80
FLT24-35WLED-UNIV-40	35	4,171	119	>100	>80
FLT24-45WLED-UNIV-40	45	5,140	115	>100	>80

Lm/W = Lumens Per Watt

Options

Accessories

POSTP	Post Painted Aluminum
FI/ILBCP05	5W LED Factory Wired Battery Backup
FI/ILBCP07	7W LED Factory Wired Battery Backup
FI/ILBCP10	10W LED Factory Wired Battery Backup
FI/ILBCP12	12W LED Factory Wired Battery Backup
SD480	480V Step Down Transformer

Controls

ES	EasySense Control
SR	Sensor Ready Driver For ES
ES/PCD	Pre-Installed App On Controlled Device For Commissioning

Mounting

SM	Surface Mount
FLGK	Flange Kit

STRIP

2FT & 4FT FZ Low Profile Strip



Specifications:

- 2FT & 4FT
- Durable Steel Construction
- Frosted Acrylic Lens Available
- Color Temps Available In 3000K, 3500K, 4000K, & 5000K
- Contact Factory For Other Wattage Options
- Dry And Damp Location Listed
- 0-10V Dimmable (100%-5%)
- 5 Yr. Warranty
- DesignLights Consortium™ Qualified Luminaire

Applications

- Schools
- Warehouses
- Distribution Centers
- Retail Applications
- Manufacturing Facilities
- Hallways

Performance Guide

Part #	Wattage	Lumens	Lm/W	L70	CRI	DLC Premium
FZ2A-16WLED-UNIV-40	16	1,981	121	>100	>80	•
FZ2A-30WLED-UNIV-40	29	3,428	118	>100	>80	•
FZ4A-16WLED-UNIV-40	16	2,432	152	>100	>80	•
FZ4A-22WLED-UNIV-40	22	3,253	148	>100	>80	•
FZ4A-30WLED-UNIV-40	30	4,365	146	>100	>80	•
FZ4B-45WLED-UNIV-40	45	6,116	137	>100	>80	•
FZ4C-59WLED-UNIV-40	59	8,313	140	>100	>80	•

Lm/W = Lumens Per Watt

Options

Accessories

- FRL** Frosted Acrylic Lens
- WC** Wire Cage
- FI/ILBCP05** 5W LED Factory Wired Battery Backup
- FI/ILBCP07** 7W LED Factory Wired Battery Backup
- FI/ILBCP10** 10W LED Factory Wired Battery Backup
- FI/ILBCP12** 12W LED Factory Wired Battery Backup
- SD480** 480V Step Down Transformer

Controls

- FIOS** On/Off Occupancy Sensor Installed
- USBD** User Select Bi-Level Dim w/ Occ. Sensor
- BDxx** Preset Bi-Level Dim Sensor
- BDxxPC** Preset Bi-Level Dim w/ Photocell
- DHPC** Daylight Harvesting
- ES** EasySense Control
- SR** Sensor Ready Driver For ES
- ES/PCD** Pre-Installed App On Controlled Device For Commissioning

Mounting

- V-Clips** For Dual Point Chain Or Cable Hanging (Std.)
- FMB** Fixture Mounting Box Includes Rigid Box To Attach To Fixture, Provides For Single Point Mounting (HUB, HOOK Required)
- HOOK** Cast Iron Hook For Single Point Mounting
- HUB 3/4** Conduit Hub 3/4" For Pendant Mounts
- HB-XX-18Y-PAD** Y-Toggle Cable System (XX=in)

STRIP

8FT FZ Low Profile Strip



Specifications:

- 8FT
- Durable Steel Construction
- Frosted Acrylic Lens Available
- Color Temps Available In 3000K, 3500K, 4000K, & 5000K
- Contact Factory For Other Wattage Options
- Dry And Damp Location Listed
- 0-10V Dimmable (100%-5%)
- 5 Yr. Warranty
- DesignLights Consortium™ Qualified Luminaire



Applications

- Schools
- Distribution Centers
- Manufacturing Facilities
- Warehouses
- Retail Applications
- Hallways

Performance Guide

Part #	Wattage	Lumens	Lm/W	L70	CRI	DLC Premium
FZ8B-32WLED-UNIV-40	32	4,881	153	>100	>80	•
FZ8B-44WLED-UNIV-40	44	6,528	148	>100	>80	•
FZ8C-60WLED-UNIV-40	60	8,760	146	>100	>80	•
FZ8D-80WLED-UNIV-40	80	11,182	140	>100	>80	•
FZ8E-88WLED-UNIV-40	88	12,273	138	>100	>80	•
FZ8F-118WLED-UNIV-40	118	16,594	140	>100	>80	

Lm/W = Lumens Per Watt

Options

Accessories

FRL	Frosted Acrylic Lens
WC	Wire Cage
FI/ILBCP05	5W LED Factory Wired Battery Backup
FI/ILBCP07	7W LED Factory Wired Battery Backup
FI/ILBCP10	10W LED Factory Wired Battery Backup
FI/ILBCP12	12W LED Factory Wired Battery Backup
SD480	480V Step Down Transformer

Controls

FIOS	On/Off Occupancy Sensor Installed
USBD	User Select Bi-Level Dim w/ Occ. Sensor
BDxx	Preset Bi-Level Dim Sensor
BDxxPC	Preset Bi-Level Dim w/ Photocell
DHPC	Daylight Harvesting
ES	EasySense Control
SR	Sensor Ready Driver For ES
ES/PCD	Pre-Installed App On Controlled Device For Commissioning

Mounting

V-Clips	For Dual Point Chain Or Cable Hanging (Std.)
FMB	Fixture Mounting Box Includes Rigid Box To Attach To Fixture, Provides For Single Point Mounting (HUB, HOOK Required)
HOOK	Cast Iron Hook For Single Point Mounting
HUB 3/4	Conduit Hub 3/4" For Pendant Mounts
HB-XX-18Y-PAD	Y-Toggle Cable System (XX=in)

RETROFIT

4FT RZ - Low Profile Strip Retrofit



Specifications:

- 4FT
- Durable Steel Construction
- Frosted Acrylic Lens Available
- Color Temps Available In 3000K, 3500K, 4000K, & 5000K
- Contact Factory For Other Wattage Options
- Dry And Damp Location Listed
- 0-10V Dimmable (100%-5%)
- 5 Yr. Warranty
- DesignLights Consortium™ Qualified Luminaire
- Components
 - LED Channel x 1
 - LED Driver x 1-2 Pending Wattage
 - LED Driver Plate x 1-2 Pending Wattage
 - Fixture ID Label x 1
 - Self-Drilling Screws x 5-10 Pending Wattage
 - Driver Screws x 2-4 Pending Wattage

Applications

- Schools
- Warehouses
- Distribution Centers
- Retail Applications
- Manufacturing Facilities
- Hallways

Performance Guide

Part #	Wattage	Lumens	Lm/W	L70	CRI	DLC Premium
RZ4A-16WLED-UNIV-40	16	2,432	152	>100K	>80	•
RZ4A-22WLED-UNIV-40	22	3,253	148	>100K	>80	•
RZ4A-30WLED-UNIV-40	30	4,365	146	>100K	>80	•
RZ4A-45WLED-UNIV-40	44	6,116	137	>100K	>80	•
RZ4A-59WLED-UNIV-40	59	8,313	140	>100K	>80	•

Lm/W = Lumens Per Watt

Options

Accessories

- FRL Frosted Acrylic Lens
- WC Wire Cage
- FI/ILBCP05 5W LED Factory Wired Battery Backup
- FI/ILBCP07 7W LED Factory Wired Battery Backup
- FI/ILBCP10 10W LED Factory Wired Battery Backup
- FI/ILBCP12 12W LED Factory Wired Battery Backup
- SD480 480V Step Down Transformer

Controls

- FIOS On/Off Occupancy Sensor Installed
- USBD User Select Bi-Level Dim w/ Occ. Sensor
- BDxx Preset Bi-Level Dim Sensor
- BDxxPC Preset Bi-Level Dim w/ Photocell
- DHPC Daylight Harvesting
- ES EasySense Control
- SR Sensor Ready Driver For ES
- ES/PCD Pre-Installed App On Controlled Device For Commissioning

RETROFIT

8FT RZ - Low Profile Strip Retrofit



Specifications:

- 8FT
- Durable Steel Construction
- Frosted Acrylic Lens Available
- Color Temps Available In 3000K, 3500K, 4000K, & 5000K
- Contact Factory For Other Wattage Options
- Dry And Damp Location Listed
- 0-10V Dimmable (100%-5%)
- 5 Yr. Warranty
- DesignLights Consortium™ Qualified Luminaire
- Components
 - LED Channel x 1
 - LED Driver x 1-2 Pending Wattage
 - LED Driver Plate x 1-2 Pending Wattage
 - Fixture ID Label x 1
 - Self-Drilling Screws x 5-10 Pending Wattage
 - Driver Screws x 2-4 Pending Wattage

Applications

- Schools
- Warehouses
- Distribution Centers
- Retail Applications
- Manufacturing Facilities
- Hallways

Performance Guide

Part #	Wattage	Lumens	Lm/W	L70	CRI	DLC Premium
RZ8B-32WLED-UNIV-40	32	4,881	153	>100	>80	•
RZ8B-44WLED-UNIV-40	44	6,528	148	>100	>80	•
RZ8C-60WLED-UNIV-40	60	8,760	146	>100	>80	•
RZ8D-80WLED-UNIV-40	80	11,182	140	>100	>80	•
RZ8E-88WLED-UNIV-40	88	12,273	138	>100	>80	•
RZ8F-118WLED-UNIV-40	118	16,594	140	>100	>80	

Lm/W = Lumens Per Watt

Options

Accessories

- FRL** Frosted Acrylic Lens
- WC** Wire Cage
- FI/ILBCP05** 5W LED Factory Wired Battery Backup
- FI/ILBCP07** 7W LED Factory Wired Battery Backup
- FI/ILBCP10** 10W LED Factory Wired Battery Backup
- FI/ILBCP12** 12W LED Factory Wired Battery Backup
- SD480** 480V Step Down Transformer

Controls

- FIOS** On/Off Occupancy Sensor Installed
- USBD** User Select Bi-Level Dim w/ Occ. Sensor
- BDxx** Preset Bi-Level Dim Sensor
- BDxxPC** Preset Bi-Level Dim w/ Photocell
- DHPC** Daylight Harvesting
- ES** EasySense Control
- SR** Sensor Ready Driver For ES
- ES/PCD** Pre-Installed App On Controlled Device For Commissioning

STRIP / RETROFIT

2FT & 4FT Low Profile Channel



Specifications:

- Custom Channel Widths Available For Retrofit
- Suitable For New Or Retrofit Installation
- Durable Steel Construction
- Frosted Acrylic Lens Available
- Color Temps Available In 3000K, 3500K, 4000K, & 5000K
- Channel Housing Available
- Dry And Damp Location Listed
- 0-10V Dimmable Driver (100%-5%)
- 5 Yr. Warranty
- DesignLights Consortium™ Qualified Luminaire



Applications

- Cove Lighting
- Warehouses
- Distribution Centers
- Retail Applications
- Manufacturing Facilities

Performance Guide

Part #	Wattage	Lumens	Lm/W	L70	CRI
F102-4.3-20WLED-UNIV-50	20	2,148	111	>100	>80
F102-4.3-30WLED-UNIV-50	30	3,298	108	>100	>80
F104-4.3-30WLED-UNIV-50	30	3,194	105	>100	>80
F104-4.3-40WLED-UNIV-50	40	3,867	85	>77	>80
F104-4.3-60WLED-UNIV-50	60	6,045	102	>100	>80
F104-4.3-80WLED-UNIV-50	80	7,297	90	>71	>80

Lm/W = Lumens Per Watt

Options

Accessories

CHAN	Channel Housing
FRLK	Frosted Lens Kit
CORDx	Cord (x=ft)
LEDBB	LED Battery Backup
QDCx	Quick Disconnect Cord (x=ft)
SD480	480V Step Down Transformer
WC	11 Ga Wire Cage

Controls

FIOS	On/Off Occupancy Sensor Installed
FIOSPC	On/Off Occipancy Sensor w/ Photocell
USDC	User Selectable Dimming Control
USBD	User Select Bi-Level Dim w/ Occ. Sensor
BDxx	Preset Bi-Level Dim Sensor
BDxxPC	Preset Bi-Level Sim Sensor w/ Photocell
DHPC	Daylight Harvesting

Mounting

V-Clips	For Dual Point Chain Or Cable Hanging (Std.)
HB-XX-PAD	Y-Toggle Cable System

STRIP / RETROFIT

8FT Low Profile Channel



Specifications:

- Custom Channel Widths Available For Retrofit
- Suitable For New Or Retrofit Installation
- Durable Steel Construction
- Frosted Acrylic Lens Available
- Color Temps Available In 3000K, 3500K, 4000K, & 5000K
- Channel Housing Available
- Dry And Damp Location Listed
- 0-10V Dimmable Driver (100%-5%)
- 5 Yr. Warranty
- DesignLights Consortium™ Qualified Luminaire

Applications

- Cove Lighting
- Warehouses
- Distribution Centers
- Retail Applications
- Manufacturing Facilities

Performance Guide

Part #	Wattage	Lumens	Lm/W
F108-4.3-60WLED-UNIV-50	60	6,045	102
F108-4.3-80WLED-UNIV-50	80	7,297	90
F108-4.3-100WLED-UNIV-50	100	12,354	109
F108-4.3-160WLED-UNIV-50	160	14,594	90

Lm/W = Lumens Per Watt

Options

Accessories

CHAN	Channel Housing
FRLK	Frosted Lens Kit
CORDx	Cord (x=ft)
LEDBB	LED Battery Backup
QDCx	Quick Disconnect Cord (x=ft)
SD480	480V Step Down Transformer
WC	11 Ga Wire Cage

Controls

FIOS	On/Off Occupancy Sensor Installed
FIOSPC	On/Off Occupancy Sensor w/ Photocell
USDC	User Selectable Dimming Control
USBD	User Select Bi-Level Dim w/ Occ. Sensor
BDxx	Preset Bi-Level Dim Sensor
BDxxPC	Preset Bi-Level Sim Sensor w/ Photocell
DHPC	Daylight Harvesting

Mounting

V-Clips	For Dual Point Chain Or Cable Hanging (Std.)
HB-XX-PAD	Y-Toggle Cable System

WRAP

FWS - Shallow Wrap



Specifications:

- Low Profile Shallow Wrap
- Specification Grade For New Construction
- 4FT & 8FT Configuration
- 23 Ga Die Formed Steel Housing
- Surface Mount Or Suspended
- Suitable For Continuous Runs
- Prismatic Wrap Around Lens
- Wire Cage Option Available (Replaces Prismatic Lens)
- EasySense Control Available
- 0-10V Dimmable Driver (100% - 5%)
- Ample KOs On Back And Ends
- 5 Yr. Warranty
- DesignLights Consortium™ Qualified

Applications

- Offices
- Hallways
- Work Station Task Lighting

Performance Guide

Part #	Wattage	Lumens	Lm/W	L70	CRI
FWS-20WLED-UNIV-40	20	2,890	131	>100	>80
FWS-30WLED-UNIV-40	30	3,801	127	>100	>80
FWS-40WLED-UNIV-40	40	4,836	121	>100	>80
FWS-55WLED-UNIV-40	55	6,173	116	>100	>80
FWS-70WLED-UNIV-40	70	7,960	114	>100	>80
FWS8-40WLED-UNIV-40	40	5,628	131	>100	>80
FWS8-55WLED-UNIV-40	55	6,897	128	>100	>80
FWS8-80WLED-UNIV-40	80	9,892	124	>100	>80

Lm/W = Lumens Per Watt

Options

Accessories

CORDx	Cord (x=ft)
PLUGx	Plug (x=Type, eg. L715P)
LEDBB	LED Battery Backup
SD480	480V Step Down Transformer
WC	Wire Cage

Controls

FIOS	On/Off Occupancy Sensor Installed
USDC	User Selectable Dimming Control
USBD	User Select Bi-Level Dim w/ Occ. Sensor
BDxx	Preset Bi-Level Dim Sensor
ES	EasySense Control
SR	Sensor Ready Driver For ES
ES	Pre-Installed App On Control Device

WRAP

FWN - Deep Narrow Wrap



Specifications:

- 4FT And 8FT Configuration
- 23 Ga Die Formed Steel Housing
- Surface Mount Or Suspended
- Suitable For Continuous Runs
- Prismatic Wrap Around Lens
- Wire Cage Option Available (Replaces Prismatic Lens)
- Multiple Dimming And Sensor Options To Fully Control Occupied And Unoccupied Light Levels
- 0-10V Dimmable Driver (100% - 5%)
- Ample KOs On Back And Ends
- 5 Yr. Warranty

Applications

- Offices
- Hallways
- Work Station Task Lighting

Performance Guide

Part #	Wattage	Lumens	Lm/W	L70	CRI
FWN-40WLED-UNIV-40	40	3,386	73	>72	>80
FWN-80WLED-UNIV-40	80	6,046	76	>77	>80
FWN8-80WLED-UNIV-40	80	6,046	76	>77	>80
FWN8-160WLED-UNIV-40	160	12,092	76	>77	>80

Lm/W = Lumens Per Watt

Options

Accessories

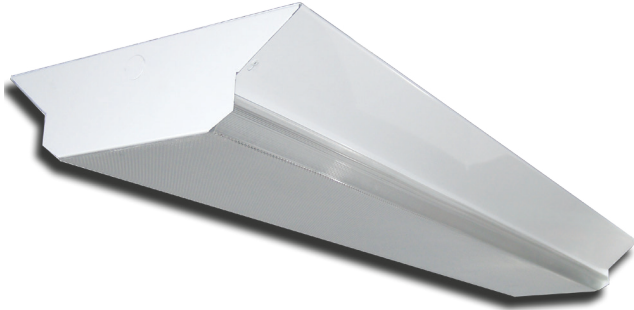
CORDx	Cord (x=ft)
PLUGx	Plug (x=Type, eg. L715P)
LEDBB	LED Battery Backup
SD480	480V Step Down Transformer
WC	Wire Cage

Controls

FIOS	On/Off Occupancy Sensor Installed
USDC	User Selectable Dimming Control
USBD	User Select Bi-Level Dim w/ Occ. Sensor
BDxx	Preset Bi-Level Dim Sensor

WRAP

FWC - Conversion Wrap



Specifications:

- 4FT And 8FT Configuration
- 23 Ga Die Formed Steel Housing
- Surface Mount Or Suspended
- Suitable For Continuous Runs
- Prismatic Wrap Around Lens
- Wire Cage Option Available (Replaces Prismatic Lens)
- Multiple Dimming And Sensor Options To Fully Control Occupied And Unoccupied Light Levels
- 0-10V Dimmable Driver (100% - 5%)
- Ample KOs On Back And Ends
- 5 Yr. Warranty

Applications

- Offices
- Hallways
- Work Station Task Lighting

Performance Guide

Part #	Wattage	Lumens	Lm/W	L70	CRI
FWC-40WLED-UNIV-40	40	3,386	73	>72	>80
FWC-80WLED-UNIV-40	80	6,046	76	>77	>80
FWC8-80WLED-UNIV-40	80	6,046	76	>77	>80
FWC8-160WLED-UNIV-40	160	12,092	76	>77	>80

Lm/W = Lumens Per Watt

Options

Accessories

CORDx	Cord (x=ft)
PLUGx	Plug (x=Type, eg. L715P)
LEDBB	LED Battery Backup
MCWHIPx	Flexible Conduit
SD480	480V Step Down Transformer
WC	Wire Cage

Controls

FIOS	On/Off Occupancy Sensor Installed
USDC	User Selectable Dimming Control
USBD	User Select Bi-Level Dim w/ Occ. Sensor
BDxx	Preset Bi-Level Dim Sensor

STAIRWELL

Cavern & Cavern Lite



Specifications:

- 2FT & 4FT LED Options Available
- Ultrasonic Sensor Fills Entire Space For Maximum Sensing Range
- Fully Control Light Levels For Both Occupied and Unoccupied Areas with High/Low User Selectable Bi-Level Dimming (USBD/HL) Option to Help Maintain Life Safety Codes
- 0-10V Dimmable Driver (100% - 5%)
- Frosted Acrylic Lens Easily Removes For Cleaning
- 5 Yr. Warranty
- DesignLights Consortium™ Premium Qualified Luminaire

Applications

- Stairwells

Performance Guide

Part #	Wattage	Lumens	Lm/W	L70	CRI
CV2-20WLED-UNIV-40	20	2,303	113	>100	>80
CV2-30WLED-UNIV-40	30	3,349	112	>100	>80
CV4-30WLED-UNIV-40	30	3,349	112	>100	>80
CV4-40WLED-UNIV-40	40	4,767	119	>100	>80
C4-60WLED-UNIV-40	60	4,928	83	>100	>80
C4-80WLED-UNIV-40	80	5,994	75	>74	>80

Lm/W = Lumens Per Watt

Options

Accessories

FRAL	Frosted Acrylic Lens
WHP	White Paint (Std.)
BRP	Bronze Paint
CPX	Custom Paint (x=spec color)
CORDx	Cord (x=ft)
PLUGx	Plug (x=type, eg. L715P)

FI/ILBCP05	5W LED Factory Wired Battery Backup
FI/ILBCP07	7W LED Factory Wired Battery Backup
FI/ILBCP10	10W LED Factory Wired Battery Backup
FI/ILBCP12	12W LED Factory Wired Battery Backup
TPS	Tamper Proof Screws (cavern only)
SD480	480V Step Down Transformer

Controls

FIOS	On/Off Occupancy Sensor Installed
BDxx	Preset Bi-Level Dim Sensor
USDC	User Selectable Dimming Control
USBD	User Select Bi-Level Dim w/ Occ. Sensor
USBD/HL	User Select High/Low Bi-Level Dimming w/ Occupancy Sensor
FHSBB500	500 Lumen Battery Backup