

PROJECT NAME:	
CATALOG NUMBER:	FIXTURE TYPE:
VOLTS/WATTS:	LAMPS/BOARD:



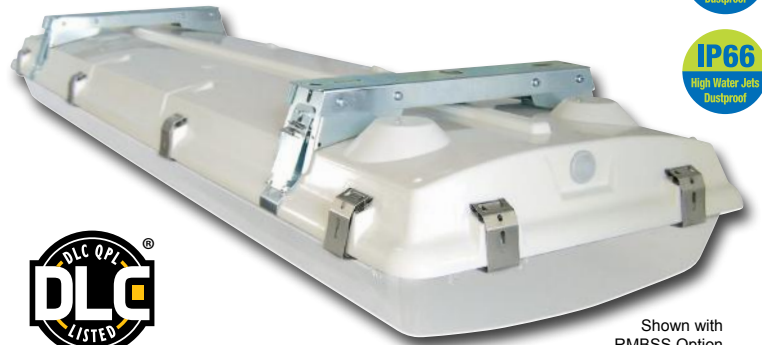
# BLIZZARD EXT FROSTED - 190W LED

WET LOCATION

## FEATURES

- Effective Heat Management System (Std)
- Frosted Acrylic Lens (Std), Clear Acrylic Lens (CAL) or Clear Polycarbonate Lens (PCL) Available
- V-Hooks for Chain or Cable Hanging (Standard)
- Optional Rigid Mounting Beam (RMB) allows for: Secure Ceiling Mount or Dual Pendant Mount
- Marine Grade 316 Stainless Steel (Std) or Optional Secure Locking Plastic Latches/Hardware
- 5 Year Warranty
- Fiberglass Body Attributes
  - IP65, IP66 & IP67 (Dust Tight, Low Pressure Water Jets, High Pressure Water Jets, and Immerse 1M)
  - NEMA4X, NSF Rated & 5VA Flame Rating
- DesignLights Consortium® Qualified Luminaire<sup>(1)</sup>

REPLACES 400W MH



Shown with RMBSS Option



## LED SYSTEM

Calculated L70 (TM-21)	>100K
Delivered Lumens	22,357 lm
Total Input Watts	192 W
Luminaire Efficacy Rating (LER)	117 lm/W
Correlated Color Temperature (CCT)	5000K
Color Rendering Index (CRI)	> 80
Maximum Ambient Temperature	130°F
Minimum Ambient Temperature	-35°F
Universal Driver	120-277 V

LED System data above based on BLEXT-190WLED-UNIV-50-FRAL  
 LED Lumen Maintenance Estimates based on TM-21 projections for the light source at 25°C ambient  
<sup>(1)</sup> Specific Configurations Listed on DLC

## SUITABLE APPLICATIONS

- Coolers / Freezers
- Food Preparation
- High Bay / Low Bay
- Commercial or Industrial Building
- Warehouse, Distribution Center, or Manufacturing Plant



## Ordering Guide

BLEXT	190WLED	UNIV	50	FRAL
-------	---------	------	----	------

Series	LED	Driver	Color	Options
--------	-----	--------	-------	---------

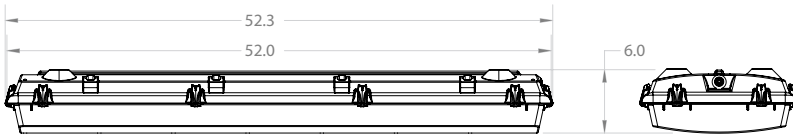
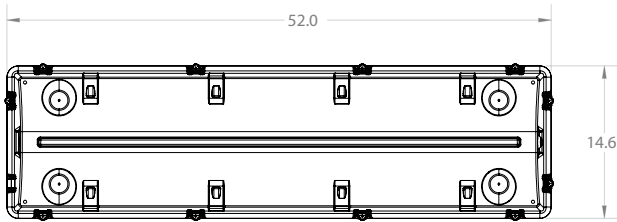
<input type="checkbox"/> BLEXT Blizzard EXT	<input type="checkbox"/> 190WLED 6x56 Board	<input type="checkbox"/> UNIV 120-277 Driver	<input type="checkbox"/> 40* <input type="checkbox"/> 50* <small>*DLC Listed Config.</small>	<input type="checkbox"/> CAL Clear Acrylic Lens <input checked="" type="checkbox"/> FRAL* Frosted Acrylic Lens <input type="checkbox"/> PCL Clear Polycarbonate Lens <input type="checkbox"/> DIM 0-10V Dimmable Driver <input type="checkbox"/> FIOS On/Off Occupancy Sensor Installed <input type="checkbox"/> FIOSPC On/Off Occupancy Sensor w/ Photocell <input type="checkbox"/> WLOS Wet Location Sensor Installed <input type="checkbox"/> USDC User Selectable Dimming Control <input type="checkbox"/> USBD User Select Bi-level Dim w/ Occ. Sensor <input type="checkbox"/> BDxx Preset Bi-level Dim Sensor (xx=% eg. 20,30) <input type="checkbox"/> BDxxPC Preset Bi-level Dim Sensor w/ Photocell <input type="checkbox"/> DHPC Daylight Harvesting <input type="checkbox"/> PCxxx Photocell (xxx = Voltage) <input type="checkbox"/> SD480** 480V Step Down Transformer <input type="checkbox"/> FI/ILBCP05 5W LED Factory Installed Battery Backup <input type="checkbox"/> FI/ILBCP07 7W LED Factory Installed Battery Backup <input type="checkbox"/> FI/ILBCP10 10W LED Factory Installed Battery Backup <input type="checkbox"/> FI/ILBCP12 12W LED Factory Installed Battery Backup <input type="checkbox"/> CLD For Below 0°C/32°F Environment <input type="checkbox"/> CORDWx Wet Location Strain Relief Cord (x = ft) <input type="checkbox"/> HB-XX-18Y-PAD Y-Toggle Cable System (XX = in) <input type="checkbox"/> RMBSS Rigid Mounting Beam (SS)
---	---	--	--	--

\*\*Does not meet DLC

\*Battery Backup Options See Field Installed LED BB Sheet.

# BLIZZARD EXT FROSTED - 190W LED

WET LOCATION



## MOUNTING OPTIONS

- V-Hooks (Std) for Dual Point Chain or Cable Hanging
- Optional Rigid Mounting Beam allows for:
  - Secure Ceiling Mount
  - Dual Pendant Mount (with 1/2" Conduit Hubs)
- HB-60-18Y-PAD - Y-Paddle Cables



Straps w/ V-Hook



Rigid Mounting Beam

HB-60-18Y-PAD



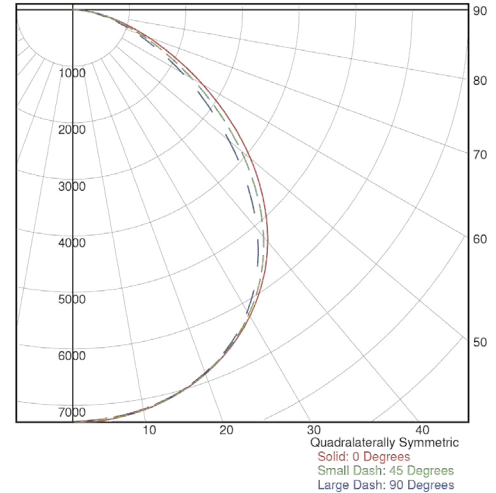
## BLEXT-190WLED-UNIV-FRAL

LUMINAIRE OUTPUT = 21692.36 LM  
120.0V 1.609A 191.4W PF=0.989

### SUMMARY DATA

HEMISPHERES TESTED:	BOTH
EFFICIENCY (Total):	100.0%
EFFICIENCY (Downlight):	98.7%
EFFICIENCY (Uplight):	3.3%
CIE CLASSIFICATION:	DIRECT
SPACING CRITERION: (0-Deg):	1.27
SPACING CRITERION: (90-Deg):	1.26
LUMENS/LAMP:	21692.36
NO. OF LAMPS:	1
LUMINOUS OPENING: RECTANGULAR:	
Width:	1.08 (Feet)
Length:	4.21
Height:	0.21
INPUT WATTS:	191.46

### PLANE AND CONE DIAGRAM



Photometric values based upon tests performed in compliance with LM-79. IES files can be downloaded at [www.ilp-inc.com](http://www.ilp-inc.com)

Industrial Lighting Products

**LED lighting facts**  
A Program of the U.S. DOE

<b>Light Output (Lumens)</b>	<b>21720</b>
<b>Watts</b>	<b>191.4</b>
<b>Lumens per Watt (Efficacy)</b>	<b>113.48</b>

---

<b>Color Accuracy</b> Color Rendering Index (CRI)	<b>80</b>
--	-----------

---

<b>Light Color</b> Correlated Color Temperature (CCT):	<b>5000 (Daylight)</b>
---	------------------------

2700K    3000K    4500K    6500K

All results are according to IESNA LM-79-2009: Approved Method for the Electrical and Photometric Testing of Solid-State Lighting. The U.S. Department of Energy (DOE) verifies product test data and results.

Visit [www.lightingfacts.com](http://www.lightingfacts.com) for the Label Reference Guide.

Registration Number: JRN789 (4/1/2015)  
Model Number: GH24-190WLED-UNIV-FRAL  
Type: Luminaire - Troffer/Grid Ceiling