

Project Name:	Part Number:	Type:
---------------	--------------	-------

AREA LIGHT - 100W LED

OUTDOOR



407-478-3759
www.ilp-inc.com

FEATURES

- Bronze die-cast aluminum housing
- Custom and factory select colors available (Contact factory for pricing)
- Type II, III, IV, & VS optics available
- Tool-less hinged drop down driver access
- Universal Pole Mounting Bracket available (UPMB)
- Swappable driver cover
- IP66 Rated
- 3000K, 4000K, & 5000K color options
- 0-10V Dimmable Driver
- Dark Sky Compliant^{1,2}
- 5 year warranty
- DesignLights Consortium® Qualified Luminaire

¹ Must select 3000K to qualify

² Must select UPMB, ARM6, or HTMA mounting options to qualify



SUITABLE APPLICATIONS

- Parking Lots
- Roadways
- Car Dealerships
- Shopping Centers

LED SYSTEMS INFO		T2	T3	T4	T5S			T2	T3	T4	T5S
Calculated L ₇₀ (TM-21)	4000K	>100K	>100K	>100K	>100K	5000K	>100K	>100K	>100K	>100K	
Delivered Lumens		12,415 lm	12,278 lm	11,884 lm	12,223 lm		12,576 lm	12,436 lm	12,230 lm	12,381 lm	
Total Input Watts		106 W	106 W	106 W	106 W		106 W	106 W	106 W	106 W	
Luminaire Efficacy Rating (LER)		117 lm/W	116 lm/W	112 lm/W	115 lm/W		119 lm/W	117 lm/W	115 lm/W	117 lm/W	
Correlated Color Temperature (CCT)		4000K	4000K	4000K	4000K		5000K	5000K	5000K	5000K	
Color Rendering Index (CRI)		>70	>70	>70	>70		>70	>70	>70	>70	
BUG Rating		B3-U0-G3	B2-U0-G2	B2-U0-G2	B4-U0-G2		B3-U0-G3	B2-U0-G2	B2-U0-G2	B4-U0-G2	
Ambient Temperature Range		-30°F-125°F	-30°F-125°F	-30°F-125°F	-30°F-125°F		-30°F-125°F	-30°F-125°F	-30°F-125°F	-30°F-125°F	
Universal Driver		120-277 V	120-277 V	120-277 V	120-277 V		120-277 V	120-277 V	120-277 V	120-277 V	

LED System data above based on AL-100WLED-UNIV-40 and AL-100WLED-UNIV-50
LED Lumen maintenance estimates based on TM-21 projections for the light source at 25°C ambient.

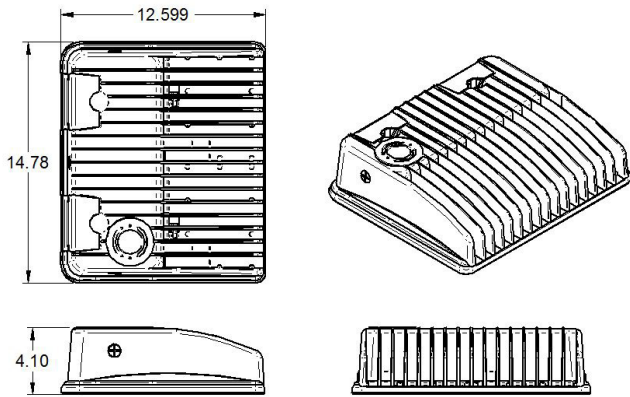
ORDERING GUIDE:

Series	Watts	Driver	Color	Optics	Options	
ALArea Light	100WLED	UNIV 120-277V Driver	50	T2	ARM6-S	6" Straight Arm Adaptor for Square Pole (Standard)
			40	T3	ARM6-Rx	6" Straight Arm Adaptor for Round Pole (x = diameter)
			30	T4	UPMB	Universal Pole Mounting Bracket
				T5S	UPMB/R	Universal Pole Mounting Bracket w/ Round Pole Adapter 4"-5"
					WMB	Wall Mount Bracket
					AL-SLPP	Adjustable Slip Fitter
					AL-SB	Adjustable Swivel Bracket
					HTMA	Horizontal Tenon Mount Adaptor
					HSS*	House Side Shield
					GS	Glare Shield
		SP1	10kA Max Univolt Surge Protector			
		SP2	22kA Max Univolt Surge Protector			
		TLPC	Univ. twist lock photocell factory installed receptacle w/ field installed photocell			
		7PIN/PC/R	7 Pin Photocell Factory Installed Receptacle			
		FUSE/SXXX	Single-line Voltage Fuse (120, 277, 347)			
		FUSE/DXXX	Single-line Voltage Fuse (208, 240, 480)			
		SP480V2	20KA MAX 480V Surge Protector			
		WLOS	Wet Location Rated Occupancy Sensor			
		USBD	User Select Bi-Level Din w/ Occ. Sensor			
		BDxx	Preset Bi-Level Dim Sensor (xx=% eg. 20, 30)			
		BDxxPC	Preset Bi-Level Dim Sensor w/ Photocell (xx=% eg. 20, 30)			
		FSIR/100	Remote Configuration Tool for WLOS & USBD Control Options			
		SD480V	480V Step Down Transformer			
		SD347V	347V Step Down Transformer			

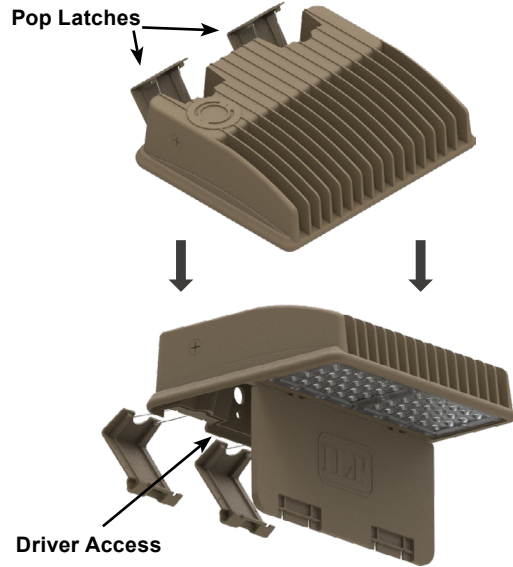
* Due to the optical pattern of the T5S optic the HSS is not applicable

AREA LIGHT - 100W LED

OUTDOOR



TOOL-LESS DRIVER ACCESS



MOUNTING OPTIONS

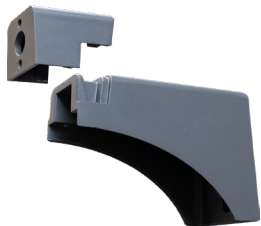
- **UPMB** - Universal Pole Mounting Bracket
- **UPMB/R** - Universal Pole Mounting Bracket
- **WMB** - Wall Mount Bracket
- **AL-SLPF** - Adjustable Slip Fitter
- **AL-SB** - Swivel Bracket
- **HTMA** - Horizontal Tenon Mount Adaptor
- **ARM6-S** - 6" Straight Arm Adaptor For Square Pole
- **ARM6-Rx** - 6" Straight Arm Adaptor For Round Pole ($x = \emptyset$)

EPA RATINGS	ARM6-S	UPMB	HTMA	AL-SLPF	AL-SB
AL-100WLED	0.61 ft ²	0.76 ft ²	0.58 ft ²	0.71 ft ²	0.60 ft ²

WEIGHT

17.2 LB

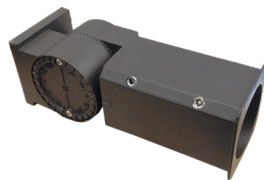
* EPA Ratings listed assume fixture is mounted horizontally. For adjustable mounting options, EPA will vary with selected angle.



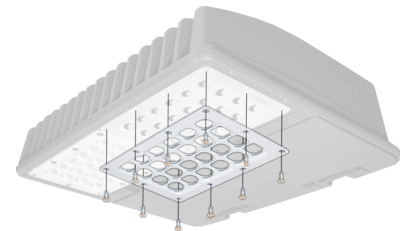
UPMB



WMB



AL-SLPF



HSS
(House Side Shield)



AL-SB



HTMA



ARM6-S
(Available for Square or Round Pole)

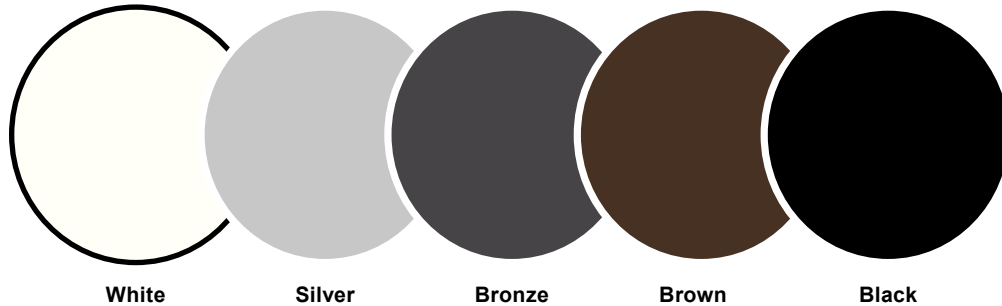


GS
(Glare Shield)

AREA LIGHT - 100W LED

OUTDOOR

FACTORY SELECT COLOR GUIDE



COLOR NAME AND DESCRIPTION	SHEEN	PRODUCT	VENDOR	PRICING
WHT - ILP White	SEMI GLOSS	POLANE T	SHERWIN-WILLIAMS	Contact Factory for Pricing
SLV - ILP Silver - Ultrasonic Chrome	GLOSS	POLANE T	SHERWIN-WILLIAMS	Contact Factory for Pricing
BRZ - ILP Bronze - std. & in stock	SEMI GLOSS	POLANE T	SHERWIN-WILLIAMS	Standard
BRN - ILP Brown	SEMI GLOSS	POLANE T	SHERWIN-WILLIAMS	Contact Factory for Pricing
BLK - ILP Black	SEMI GLOSS	POLANE T	SHERWIN-WILLIAMS	Contact Factory for Pricing

**COLORS SHOWN ABOVE ARE TO BE USED AS REFERENCE, NOT EXACT MATCH.
PLEASE REQUEST PAINT CHIPS FOR EXACT MATCH.**

AREA LIGHT - 100W LED

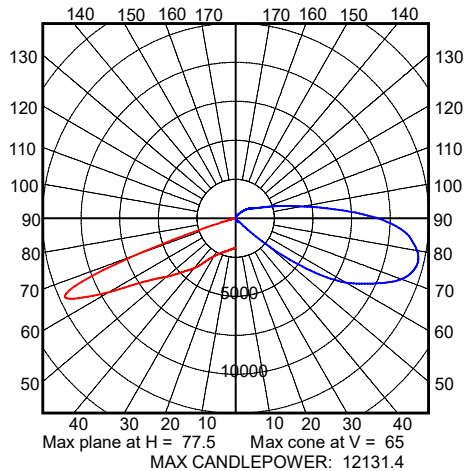
OUTDOOR

AL-100WLED-UNIV-40-T2

SUMMARY DATA

HEMISPHERES TESTED:	BOTH
EFFICIENCY (Downlight/Uplight):	100.0 % / 0.0 %
EFFICIENCY (Street/House):	67.1 % / 32.9 %
ROADWAY CLASSIFICATION:	TYPE II, SHORT
CUTOFF CLASSIFICATION:	NONCUTOFF
LUMENS:	11,915.26
INPUT WATTS:	106.1

CANDELA PLOT



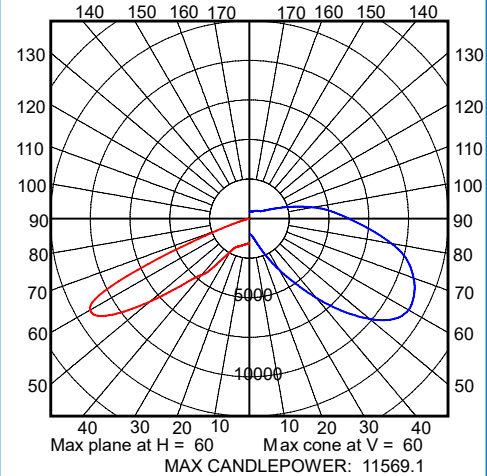
Photometric values based upon tests performed in compliance w/ LM-79.
Download IES files at www.ilp-inc.com

AL-100WLED-UNIV-40-T3

SUMMARY DATA

HEMISPHERES TESTED:	BOTH
EFFICIENCY (Downlight/Uplight):	100.0 % / 0.0 %
EFFICIENCY (Street/House):	74.8 % / 25.2 %
ROADWAY CLASSIFICATION:	TYPE II, SHORT
CUTOFF CLASSIFICATION:	CUTOFF
LUMENS:	11,848.5
INPUT WATTS:	106.4

CANDELA PLOT



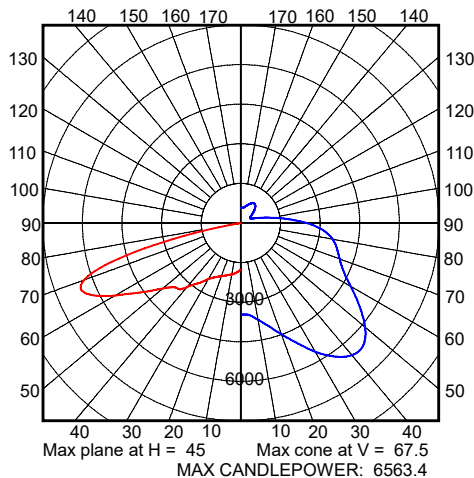
Photometric values based upon tests performed in compliance w/ LM-79.
Download IES files at www.ilp-inc.com

AL-100WLED-UNIV-40-T4

SUMMARY DATA

HEMISPHERES TESTED:	BOTH
EFFICIENCY (Downlight/Uplight):	100.0 % / 0.0 %
EFFICIENCY (Street/House):	78.1 % / 21.9 %
ROADWAY CLASSIFICATION:	TYPE IV, SHORT
CUTOFF CLASSIFICATION:	SEMICUTOFF
LUMENS:	11,453.76
INPUT WATTS:	106.1

CANDELA PLOT



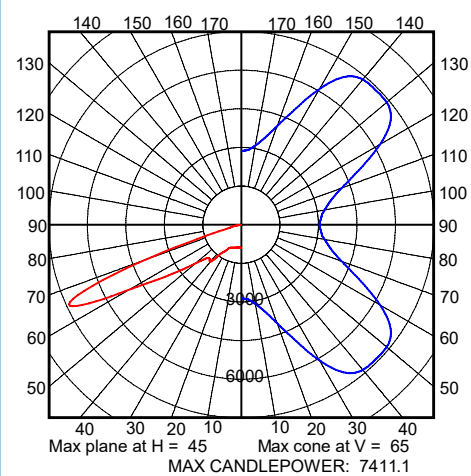
Photometric values based upon tests performed in compliance w/ LM-79.
Download IES files at www.ilp-inc.com

AL-100WLED-UNIV-40-T5S

SUMMARY DATA

HEMISPHERES TESTED:	BOTH
EFFICIENCY (Downlight/Uplight):	100.0 % / 0.0 %
EFFICIENCY (Street/House):	50.0 % / 50.0 %
ROADWAY CLASSIFICATION:	TYPE VS
CUTOFF CLASSIFICATION:	FULL CUTOFF
LUMENS:	11,779.45
INPUT WATTS:	106.1

CANDELA PLOT



Photometric values based upon tests performed in compliance w/ LM-79.
Download IES files at www.ilp-inc.com