

Project Name:	Part Number:	Type:
---------------	--------------	-------

AREA LIGHT - 320W LED

OUTDOOR



407-478-3759
www.ilp-inc.com

FEATURES

- Bronze die-cast aluminum housing
- Custom and factory select colors available (Contact factory for pricing)
- Type II, III, IV, & VS optics available
- Tool-less hinged drop down driver access
- Universal Pole Mounting Bracket available (UPMB)
- Swappable driver cover
- IP66 Rated
- 3000K, 4000K, & 5000K color options
- 0-10V Dimmable Driver
- Dark Sky Compliant^{1,2}
- 5 year warranty
- DesignLights Consortium® Qualified Luminaire

¹ Must select 3000K to qualify

² Must select UPMB, ARM6, or HTMA mounting options to qualify



SUITABLE APPLICATIONS

- Parking Lots
- Roadways
- Car Dealerships
- Shopping Centers

LED SYSTEMS INFO		T2	T3	T4	T5S		T2	T3	T4	T5S
Calculated L ₇₀ (TM-21)	4000K	>100K	>100K	>100K	>100K	5000K	>100K	>100K	>100K	>100K
Delivered Lumens		38,431 lm	37,452 lm	37,352 lm	38,401 lm		37,991 lm	37,023 lm	36,923 lm	37,961 lm
Total Input Watts		314 W	314 W	314 W	314 W		314 W	314 W	314 W	314 W
Luminaire Efficacy Rating (LER)		122 lm/W	119 lm/W	119 lm/W	122 lm/W		121 lm/W	118 lm/W	118 lm/W	121 lm/W
Correlated Color Temperature (CCT)		4000K	4000K	4000K	4000K		5000K	5000K	5000K	5000K
Color Rendering Index (CRI)		>70	>70	>70	>70		>70	>70	>70	>70
BUG Rating		B4-U0-G4	B4-U0-G4	B2-U0-G4	B5-U0-G4		B4-U0-G4	B4-U0-G4	B2-U0-G4	B5-U0-G4
Ambient Temperature Range		-40°F - 115°F	-40°F - 115°F	-40°F - 115°F	-40°F - 115°F		-40°F - 115°F	-40°F - 115°F	-40°F - 115°F	-40°F - 115°F
Universal Driver	120-277 V	120-277 V	120-277 V	120-277 V	120-277 V	120-277 V	120-277 V	120-277 V		

LED System data above based on AL-320WLED-UNIV-40 and AL-320WLED-UNIV-50
LED Lumen maintenance estimates based on TM-21 projections for the light source at 25°C ambient.

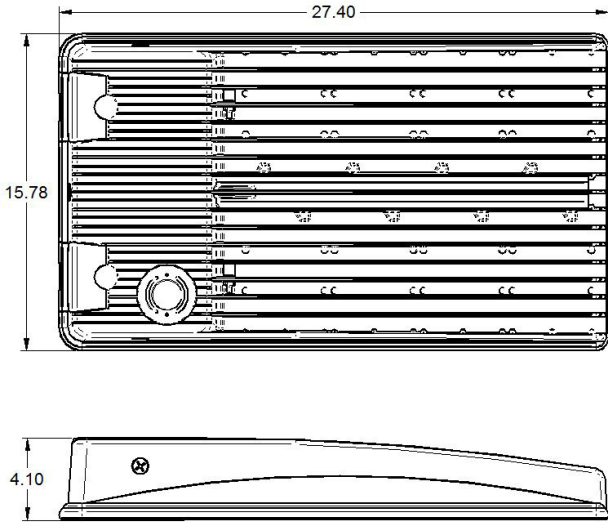
ORDERING GUIDE:

Series	Watts	Driver	Color	Optics	Options
AL Area Light	320WLED	UNIV 120-277V Driver	50	T2	ARM6-S 6" Straight Arm Adaptor for Square Pole (Standard)
			40	T3	ARM6-Rx 6" Straight Arm Adaptor for Round Pole (x = diameter)
			30	T4	UPMB Universal Pole Mounting Bracket
				T5S	UPMB/R Universal Pole Mounting Bracket w/ Round Pole Adaptor 4"-5"
					WMB Wall Mount Bracket
					AL-SLPF Adjustable Slip Fitter
					HTMA Horizontal Tenon Mount Adaptor
					HSS House Side Shield
					GS Glare Shield
					SP1 10kA Max Univolt Surge Protector
					SP2 22kA Max Univolt Surge Protector
					TLPC Univ. twist lock photocell factory installed receptacle w/ field installed photocell
					7PIN/PC/R 7 Pin Photocell Factory Installed Receptacle
					FUSE/SXXX Single-line Voltage Fuse (120, 277, 347)
					FUSE/DXXX Single-line Voltage Fuse (208, 240, 480)
					SP480V2 20KA MAX 480V Surge Protector
					WLOS Wet Location Rated Occupancy Sensor
					USBD User Select Bi-Level Din w/ Occ. Sensor
					BDxx Preset Bi-Level Dim Sensor (xx=% eg. 20, 30)
					BDxxPC Preset Bi-Level Dim Sensor w/ Photocell (xx=% eg. 20, 30)
					FSIR/100 Remote Configuration Tool for WLOS & USBD Control Options
					SD480V 480V Step Down Transformer
					SD347V 347V Step Down Transformer

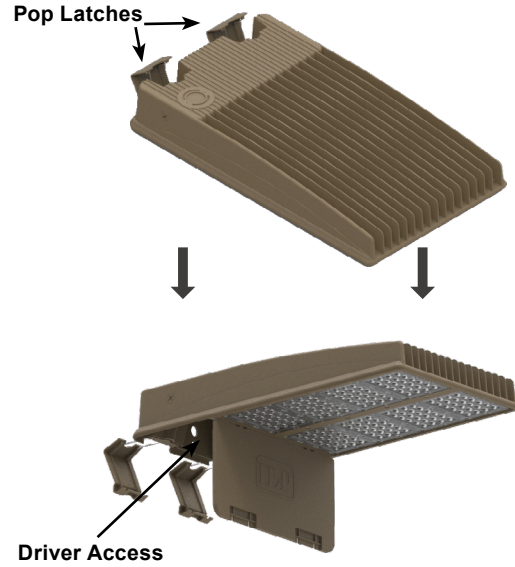
* Due to the optical pattern of the T5S optic the HSS is not applicable

AREA LIGHT - 320W LED

OUTDOOR



TOOL-LESS DRIVER ACCESS



MOUNTING OPTIONS

- **UPMB** - Universal Pole Mounting Bracket
- **UPMB/R** - Universal Pole Mounting Bracket
- **WMB** - Wall Mount Bracket
- **AL-SLPF** - Adjustable Slip Fitter
- **HTMA** - Horizontal Tenon Mount Adaptor
- **ARM6-S** - 6" Straight Arm Adaptor For Square Pole
- **ARM6-Rx** - 6" Straight Arm Adaptor For Round Pole (x = Ø)

EPA RATINGS	ARM6-S	UPMB	HTMA	AL-SLPF
AL-320WLED	1.03 ft ²	1.17 ft ²	0.98 ft ²	1.10 ft ²

WEIGHT

40.00 LB

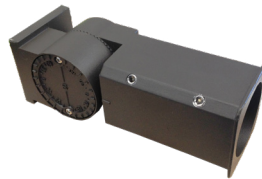
* EPA Ratings listed assume fixture is mounted horizontally. For adjustable mounting options, EPA will vary with selected angle.



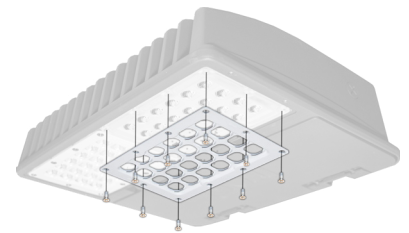
UPMB



WMB



AL-SLPF



HSS
(House Side Shield)



HTMA



ARM6-S
(Available for Square or Round Pole)

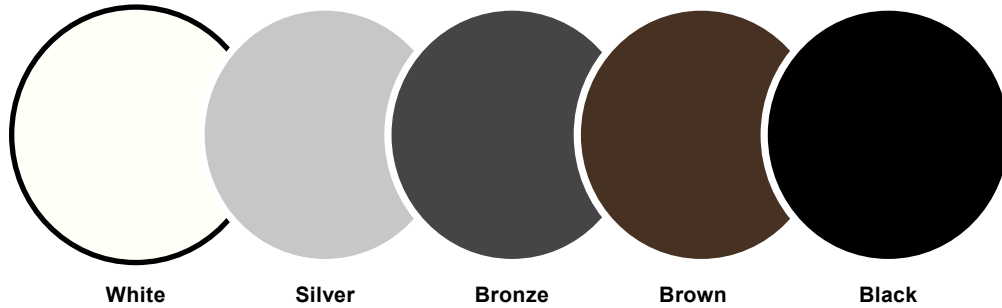


GS
(Glare Shield)

AREA LIGHT - 320W LED

OUTDOOR

FACTORY SELECT COLOR GUIDE



COLOR NAME AND DESCRIPTION	SHEEN	PRODUCT	VENDOR	PRICING
WHT - ILP White	SEMI GLOSS	POLANE T	SHERWIN-WILLIAMS	Contact Factory for Pricing
SLV - ILP Silver - Ultrasonic Chrome	GLOSS	POLANE T	SHERWIN-WILLIAMS	Contact Factory for Pricing
BRZ - ILP Bronze - std. & in stock	SEMI GLOSS	POLANE T	SHERWIN-WILLIAMS	Standard
BRN - ILP Brown	SEMI GLOSS	POLANE T	SHERWIN-WILLIAMS	Contact Factory for Pricing
BLK - ILP Black	SEMI GLOSS	POLANE T	SHERWIN-WILLIAMS	Contact Factory for Pricing

**COLORS SHOWN ABOVE ARE TO BE USED AS REFERENCE, NOT EXACT MATCH.
PLEASE REQUEST PAINT CHIPS FOR EXACT MATCH.**

AREA LIGHT - 320W LED

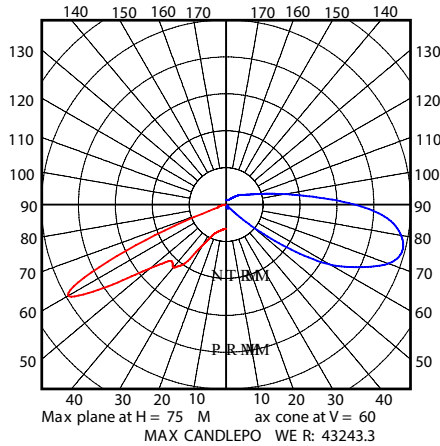
OUTDOOR

AL-320WLED-UNIV-40-T2

SUMMARY DATA

HEMISPHERES TESTED:	BOTH
EFFICIENCY (Downlight/Uplight):	100.0 % / 0.0 %
EFFICIENCY (Street/House):	66.8 % / 33.2 %
ROADWAY CLASSIFICATION:	TYPE I, SHORT
CUTOFF CLASSIFICATION:	CUTOFF
LUMENS:	37,558.78
INPUT WATTS:	316.83

CANDELA PLOT



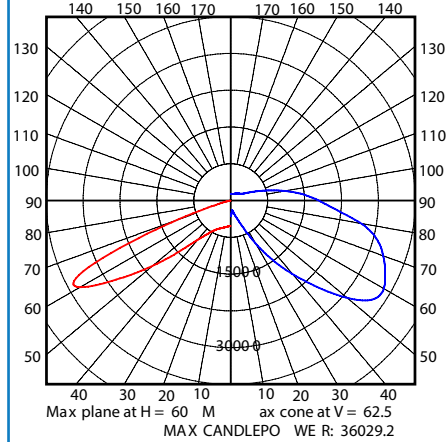
Photometric values based upon tests performed in compliance w/ LM-79.
Download IES files at www.ilp-inc.com

AL-320WLED-UNIV-40-T3

SUMMARY DATA

HEMISPHERES TESTED:	BOTH
EFFICIENCY (Downlight/Uplight):	100.0 % / 0.0 %
EFFICIENCY (Street/House):	74.6 % / 25.4 %
ROADWAY CLASSIFICATION:	TYPE III, SHORT
CUTOFF CLASSIFICATION:	CUTOFF
LUMENS:	36,784.17
INPUT WATTS:	317.39

CANDELA PLOT



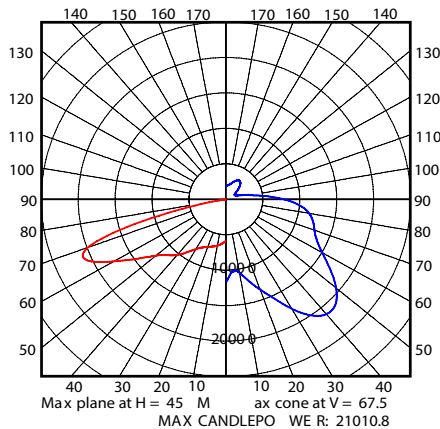
Photometric values based upon tests performed in compliance w/ LM-79.
Download IES files at www.ilp-inc.com

AL-320WLED-UNIV-40-T4

SUMMARY DATA

HEMISPHERES TESTED:	BOTH
EFFICIENCY (Downlight/Uplight):	100.0 % / 0.0 %
EFFICIENCY (Street/House):	77.2 % / 22.8 %
ROADWAY CLASSIFICATION:	TYPE IV, SHORT
CUTOFF CLASSIFICATION:	CUTOFF
LUMENS:	36,680.20
INPUT WATTS:	317.02

CANDELA PLOT



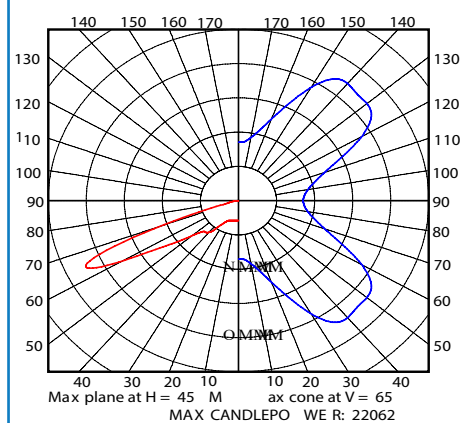
Photometric values based upon tests performed in compliance w/ LM-79.
Download IES files at www.ilp-inc.com

AL-320WLED-UNIV-40-T5S

SUMMARY DATA

HEMISPHERES TESTED:	BOTH
EFFICIENCY (Downlight/Uplight):	100.0 % / 0.0 %
EFFICIENCY (Street/House):	50.0 % / 50.0 %
ROADWAY CLASSIFICATION:	TYPE VS
CUTOFF CLASSIFICATION:	CUTOFF
LUMENS:	37,719.79
INPUT WATTS:	317.04

CANDELA PLOT



Photometric values based upon tests performed in compliance w/ LM-79.
Download IES files at www.ilp-inc.com