

Project Name:	Part Number:	Type:
---------------	--------------	-------

# AREA LIGHT - 70W LED

## OUTDOOR



407-478-3759  
www.ilp-inc.com

### FEATURES

- Bronze die-cast aluminum housing
- Custom and factory select colors available (Contact factory for pricing)
- Type II, III, IV, & VS optics available
- Tool-less hinged drop down driver access
- Universal Pole Mounting Bracket available (UPMB)
- Swappable driver cover
- IP66 Rated
- 3000K, 4000K, & 5000K color options
- 0-10V Dimmable Driver
- Dark Sky Compliant<sup>1,2</sup>
- 5 year warranty
- DesignLights Consortium® Qualified Luminaire

<sup>1</sup> Must select 3000K to qualify

<sup>2</sup> Must select UPMB, ARM6, or HTMA mounting options to qualify



### SUITABLE APPLICATIONS

- Parking Lots
- Roadways
- Car Dealerships
- Shopping Centers

LED SYSTEMS INFO		T2	T3	T4	T5S		T2	T3	T4	T5S
Calculated L <sub>70</sub> (TM-21)	4000K	>100K	>100K	>100K	>100K	5000K	>100K	>100K	>100K	>100K
Delivered Lumens		8,380 lm	8,306 lm	7,939 lm	8,248 lm		8,522 lm	8,447 lm	8,193 lm	8,387 lm
Total Input Watts		70 W	70 W	70 W	70 W		70 W	70 W	70 W	70 W
Luminaire Efficacy Rating (LER)		119 lm/W	118 lm/W	113 lm/W	117 lm/W		121 lm/W	120 lm/W	117 lm/W	119 lm/W
Correlated Color Temperature (CCT)		4000K	4000K	4000K	4000K		5000K	5000K	5000K	5000K
Color Rendering Index (CRI)		>70	>70	>70	>70		>70	>70	>70	>70
BUG Rating		B2-U0-G2	B2-U0-G2	B2-U0-G2	B3-U0-G1		B2-U0-G2	B2-U0-G2	B2-U0-G2	B3-U0-G1
Ambient Temperature Range		-30°F-130°F	-30°F-130°F	-30°F-130°F	-30°F-130°F		-30°F-130°F	-30°F-130°F	-30°F-130°F	-30°F-130°F
Universal Driver	120-277 V	120-277 V	120-277 V	120-277 V	120-277 V	120-277 V	120-277 V	120-277 V		

LED System data above based on AL-70WLED-UNIV-40 and AL-70WLED-UNIV-50  
LED Lumen maintenance estimates based on TM-21 projections for the light source at 25°C ambient.

### ORDERING GUIDE:

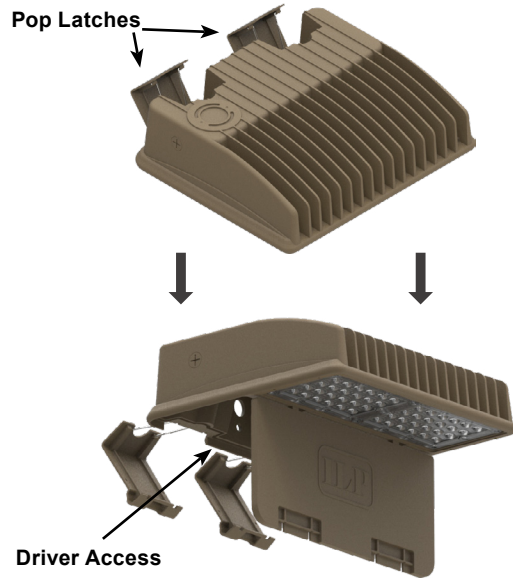
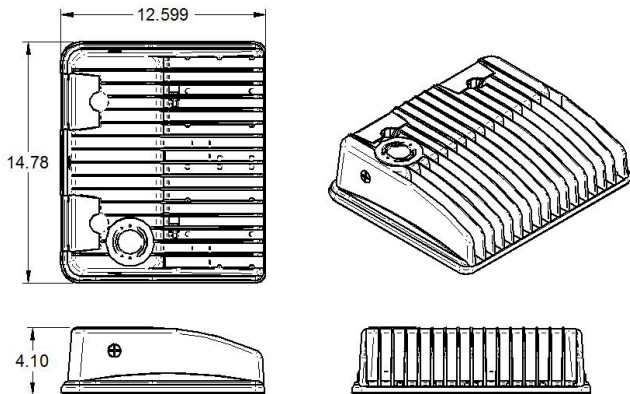
Series	Watts	Driver	Color	Optics	Options
AL Area Light	70WLED	UNIV 120-277V Driver	50	T2	ARM6-S 6" Straight Arm Adaptor for Square Pole (Standard)
			40	T3	ARM6-Rx 6" Straight Arm Adaptor for Round Pole (x = diameter)
			30	T4	UPMB Universal Pole Mounting Bracket
				T5S	UPMB/R Universal Pole Mounting Bracket w/ Round Pole Adapter 4"-5"
					WMB Wall Mount Bracket
					AL-SLPF Adjustable Slip Fitter
					AL-SB Adjustable Swivel Bracket
					HTMA Horizontal Tenon Mount Adaptor
					HSS* House Side Shield
					GS Glare Shield
					SP1 10kA Max Univolt Surge Protector
					SP2 22kA Max Univolt Surge Protector
					TLPC Univ. twist lock photocell factory installed receptacle w/ field installed photocell
					7PIN/PC/R 7 Pin Photocell Factory Installed Receptacle
					FUSE/SXXX Single-line Voltage Fuse (120, 277, 347)
					FUSE/DXXX Single-line Voltage Fuse (208, 240, 480)
					SP480V2 20KA MAX 480V Surge Protector
					WLOS Wet Location Rated Occupancy Sensor
					USBD User Select Bi-Level Din w/ Occ. Sensor
					BDxx Preset Bi-Level Dim Sensor (xx=% eg. 20, 30)
					BDxxPC Preset Bi-Level Dim Sensor w/ Photocell (xx=% eg. 20, 30)
					FSIR/100 Remote Configuration Tool for WLOS & USBD Control Options
					SD480V 480V Step Down Transformer
					SD347V 347V Step Down Transformer

\* Due to the optical pattern of the T5S optic the HSS is not applicable

# AREA LIGHT - 70W LED

OUTDOOR

# TOOL-LESS DRIVER ACCESS



## MOUNTING OPTIONS

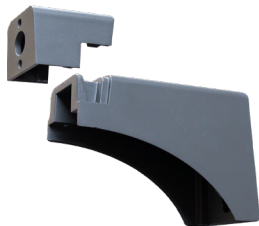
- **UPMB** - Universal Pole Mounting Bracket
- **UPMB/R** - Universal Pole Mounting Bracket
- **WMB** - Wall Mount Bracket
- **AL-SLPF** - Adjustable Slip Fitter
- **AL-SB** - Swivel Bracket
- **HTMA** - Horizontal Tenon Mount Adaptor
- **ARM6-S** - 6" Straight Arm Adaptor For Square Pole
- **ARM6-Rx** - 6" Straight Arm Adaptor For Round Pole ( $x = \emptyset$ )

EPA RATINGS	ARM6-S	UPMB	HTMA	AL-SLPF	AL-SB
AL-70WLED	0.61 ft <sup>2</sup>	0.76 ft <sup>2</sup>	0.58 ft <sup>2</sup>	0.71 ft <sup>2</sup>	0.60 ft <sup>2</sup>

### WEIGHT

17.2 LB

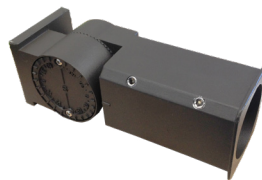
\* EPA Ratings listed assume fixture is mounted horizontally. For adjustable mounting options, EPA will vary with selected angle.



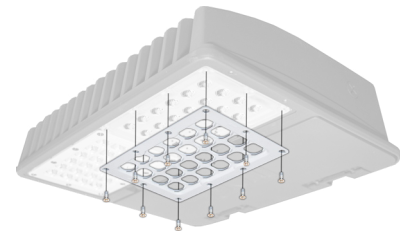
UPMB



WMB



AL-SLPF



HSS  
(House Side Shield)



AL-SB



HTMA



ARM6-S  
(Available for Square or Round Pole)

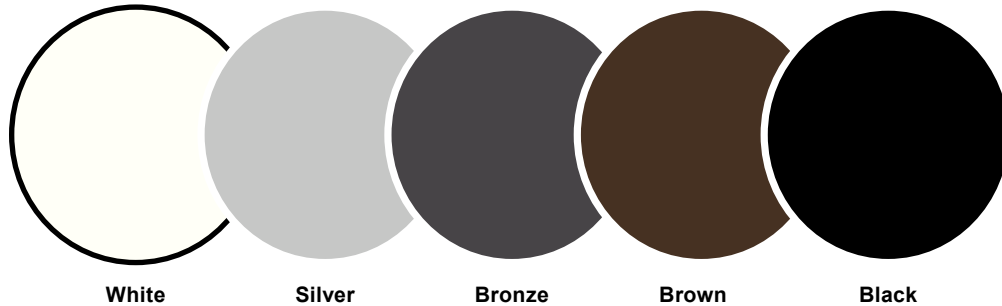


GS  
(Glare Shield)

# AREA LIGHT - 70W LED

OUTDOOR

## FACTORY SELECT COLOR GUIDE



COLOR NAME AND DESCRIPTION	SHEEN	PRODUCT	VENDOR	PRICING
WHT - ILP White	SEMI GLOSS	POLANE T	SHERWIN-WILLIAMS	Contact Factory for Pricing
SLV - ILP Silver - Ultrasonic Chrome	GLOSS	POLANE T	SHERWIN-WILLIAMS	Contact Factory for Pricing
BRZ - ILP Bronze - std. & in stock	SEMI GLOSS	POLANE T	SHERWIN-WILLIAMS	Standard
BRN - ILP Brown	SEMI GLOSS	POLANE T	SHERWIN-WILLIAMS	Contact Factory for Pricing
BLK - ILP Black	SEMI GLOSS	POLANE T	SHERWIN-WILLIAMS	Contact Factory for Pricing

**COLORS SHOWN ABOVE ARE TO BE USED AS REFERENCE, NOT EXACT MATCH.  
PLEASE REQUEST PAINT CHIPS FOR EXACT MATCH.**

# AREA LIGHT - 70W LED

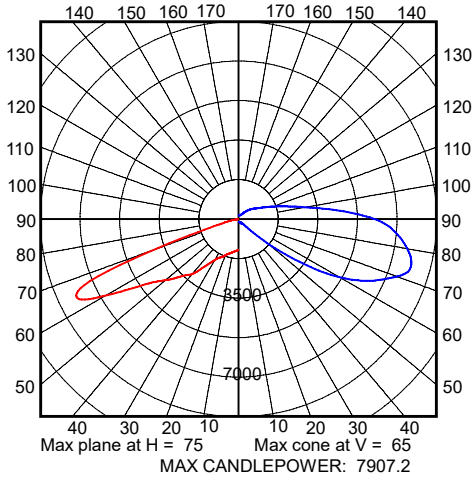
## OUTDOOR

### AL-70WLED-UNIV-40-T2

#### SUMMARY DATA

HEMISPHERES TESTED:	BOTH
EFFICIENCY (Downlight/Uplight):	100.0 % / 0.0 %
EFFICIENCY (Street/House):	66.6 % / 33.4 %
ROADWAY CLASSIFICATION:	TYPE II, SHORT
CUTOFF CLASSIFICATION:	NONCUTOFF
LUMENS:	8,387.69
INPUT WATTS:	70.53

#### CANDELA PLOT



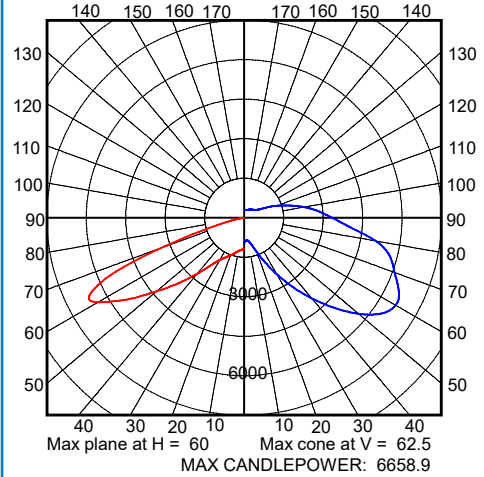
Photometric values based upon tests performed in compliance w/ LM-79.  
Download IES files at [www.ilp-inc.com](http://www.ilp-inc.com)

### AL-70WLED-UNIV-40-T3

#### SUMMARY DATA

HEMISPHERES TESTED:	BOTH
EFFICIENCY (Downlight/Uplight):	100.0 % / 0.0 %
EFFICIENCY (Street/House):	74.7 % / 25.3 %
ROADWAY CLASSIFICATION:	TYPE III, SHORT
CUTOFF CLASSIFICATION:	CUTOFF
LUMENS:	8,366.21
INPUT WATTS:	70.74

#### CANDELA PLOT



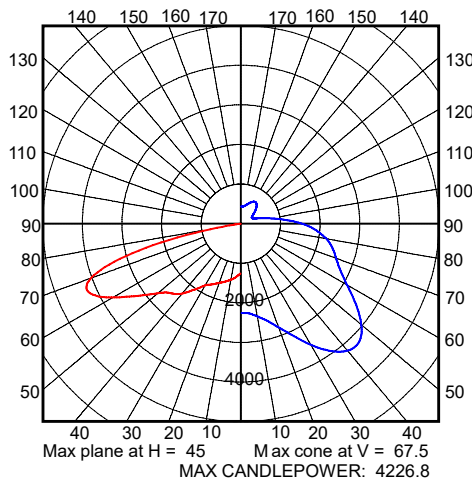
Photometric values based upon tests performed in compliance w/ LM-79.  
Download IES files at [www.ilp-inc.com](http://www.ilp-inc.com)

### AL-70WLED-UNIV-40-T4

#### SUMMARY DATA

HEMISPHERES TESTED:	BOTH
EFFICIENCY (Downlight/Uplight):	100.0 % / 0.0 %
EFFICIENCY (Street/House):	77.2 % / 22.8 %
ROADWAY CLASSIFICATION:	TYPE IV, SHORT
CUTOFF CLASSIFICATION:	SEMICUTOFF
LUMENS:	7,977.78
INPUT WATTS:	70.5

#### CANDELA PLOT



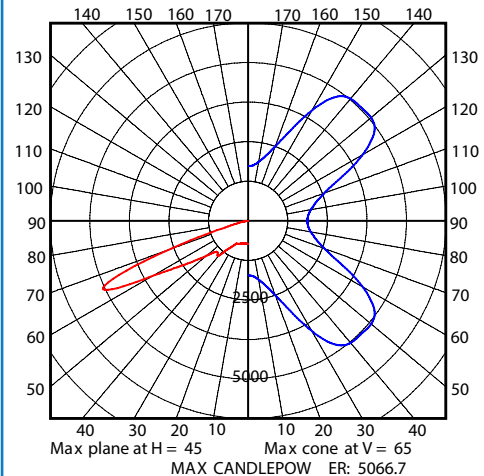
Photometric values based upon tests performed in compliance w/ LM-79.  
Download IES files at [www.ilp-inc.com](http://www.ilp-inc.com)

### AL-70WLED-UNIV-40-T5S

#### SUMMARY DATA

HEMISPHERES TESTED:	BOTH
EFFICIENCY (Downlight/Uplight):	100.0 % / 0.0 %
EFFICIENCY (Street/House):	50.0 % / 50.0 %
ROADWAY CLASSIFICATION:	TYPE VS
CUTOFF CLASSIFICATION:	CUTOFF
LUMENS:	8,304.51
INPUT WATTS:	70.63

#### CANDELA PLOT



Photometric values based upon tests performed in compliance w/ LM-79.  
Download IES files at [www.ilp-inc.com](http://www.ilp-inc.com)