

PROJECT NAME:	
CATALOG NUMBER:	FIXTURE TYPE:
VOLTS/WATTS:	LAMPS/BOARD:



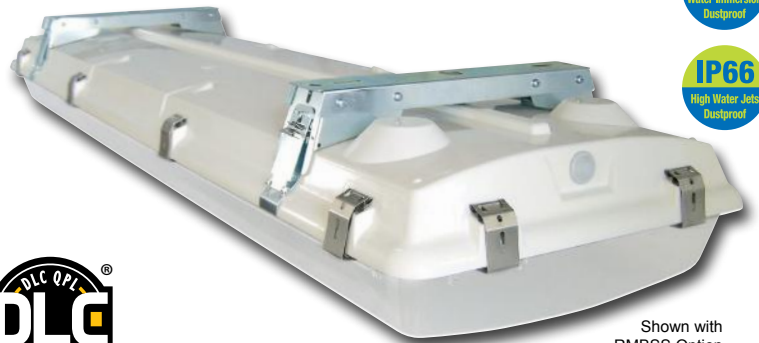
BLIZZARD EXT - 200W LED

WET LOCATION

FEATURES

- Effective Heat Management System (Std)
- Clear Acrylic Lens (Std), Frosted Acrylic Lens (FRAL) or Clear Polycarbonate Lens (PCL) Available
- V-Hooks for Chain or Cable Hanging (Standard)
- Optional Rigid Mounting Beam (RMB) allows for: Secure Ceiling Mount or Dual Pendant Mount
- Marine Grade 316 Stainless Steel (Std) or Optional Secure Locking Plastic Latches/Hardware
- 5 Year Warranty
- Fiberglass Body Attributes
 - IP65, IP66 & IP67 (Dust Tight, Low Pressure Water Jets, High Pressure Water Jets, and Immerse 1M)
 - NEMA4X, NSF Rated & 5VA Flame Rating
- DesignLights Consortium® Qualified Luminaire⁽¹⁾

REPLACES 400W MH



Shown with RMBSS Option



LED SYSTEM

Board (LG Chips)	8 x 56
Calculated L ₇₀ (TM-21)	86,000 hours
Delivered Lumens	22,734 lm
Total Input Watts	218.6 W
Luminaire Efficacy Rating (LER)	104.0 lm/W
Correlated Color Temperature (CCT)	5000K
Color Rendering Index (CRI)	> 80
Maximum Ambient Temperature	113°F
Minimum Ambient Temperature	-40°F
Universal Driver	120-277 V

SUITABLE APPLICATIONS

- Coolers / Freezers
- Food Preparation
- High Bay / Low Bay
- Commercial or Industrial Building
- Warehouse, Distribution Center, or Manufacturing Plant

LED System data above based on BLEXT-200WLED-UNIV-50-CAL
 LED Lumen Maintenance Estimates based on TM-21 projections for the light source at 25°C ambient
⁽¹⁾ Specific Configurations Listed on DLC

Ordering Guide



BLEXT	200WLED	UNIV	50	CAL
-------	---------	------	----	-----

Series	LED	Driver	Color	Options
--------	-----	--------	-------	---------

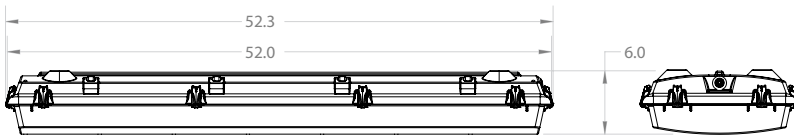
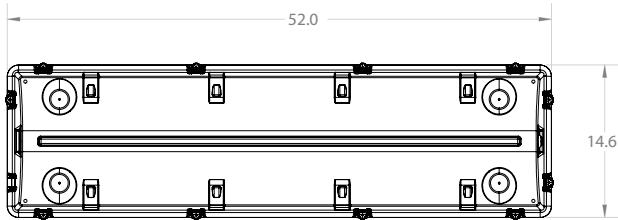
<input type="checkbox"/> BLEXT	Blizzard EXT	<input type="checkbox"/> 200WLED	8x56 Board	<input type="checkbox"/> UNIV	120-277 Driver	<input type="checkbox"/> 40*	<input type="checkbox"/> 50*	<input checked="" type="checkbox"/> CAL*	Clear Acrylic Lens
								<input type="checkbox"/> FRAL	Frosted Acrylic Lens
								<input type="checkbox"/> PCL	Clear Polycarbonate Lens
								<input type="checkbox"/> DIM	0-10V Dimmable Driver
								<input type="checkbox"/> FIOS	On/Off Occupancy Sensor Installed
								<input type="checkbox"/> FIOSPC	On/Off Occupancy Sensor w/ Photocell
								<input type="checkbox"/> WLOS	Wet Location Sensor Installed
								<input type="checkbox"/> USDC	User Selectable Dimming Control
								<input type="checkbox"/> USBD	User Select Bi-level Dim w/ Occ. Sensor
								<input type="checkbox"/> BDxx	Preset Bi-level Dim Sensor (xx=% eg. 20,30)
								<input type="checkbox"/> BDxxPC	Preset Bi-level Dim Sensor w/ Photocell
								<input type="checkbox"/> DHPC	Daylight Harvesting
								<input type="checkbox"/> PCxxx	Photocell (xxx = Voltage)
								<input type="checkbox"/> SD480**	480V Step Down Transformer
								<input type="checkbox"/> FI/ILBCP05	5W LED Factory Installed Battery Backup
								<input type="checkbox"/> FI/ILBCP07	7W LED Factory Installed Battery Backup
								<input type="checkbox"/> FI/ILBCP10	10W LED Factory Installed Battery Backup
								<input type="checkbox"/> FI/ILBCP12	12W LED Factory Installed Battery Backup
								<input type="checkbox"/> CLD	For Below 0°C/32°F Environment
								<input type="checkbox"/> CORDWx	Wet Location Strain Relief Cord (x = ft)
								<input type="checkbox"/> HB-XX-18Y-PAD	Y-Toggle Cable System (XX = in)
								<input type="checkbox"/> RMBSS	Rigid Mounting Beam (SS)

**Does not meet DLC

*Battery Backup Options See Field Installed LED BB Sheet.

BLIZZARD EXT - 200W LED

WET LOCATION



MOUNTING OPTIONS

- V-Hooks (Std) for Dual Point Chain or Cable Hanging
- Optional Rigid Mounting Beam allows for:
 - Secure Ceiling Mount
 - Dual Pendant Mount (with 1/2" Conduit Hubs)
- HB-60-18Y-PAD - Y-Paddle Cables

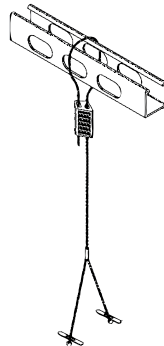


Straps w/ V-Hook



Rigid Mounting Beam

HB-60-18Y-PAD



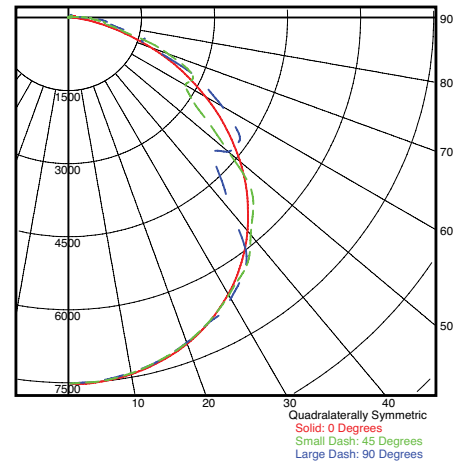
BLEXT-200WLED-UNIV-CAL

LUMINAIRE OUTPUT = 21989 LM
120.0V 1.832A 218.6W PF= 0.995

SUMMARY DATA

HEMISPHERES TESTED:	BOTH
EFFICIENCY (Total):	100.0 %
EFFICIENCY (Downlight):	98.6 %
EFFICIENCY (Uplight):	1.4 %
CIE CLASSIFICATION:	DIRECT
SPACING CRITERION (0-Deg.):	1.29
LUMENS/LAMP:	22007.11
NO. OF LAMPS:	1
LUMINOUS OPENING: RECTANGULAR	
Width:	1.10 (Feet)
Length:	4.17
Height:	0.25
INPUT WATTS:	218.6

PLANE AND CONE DIAGRAM



Photometric values based upon tests performed in compliance with LM-79. IES files can be downloaded at www.ilp-inc.com

Industrial Lighting Products

LED
lighting facts[®]
A Program of the U.S. DOE

Light Output (Lumens)	22734
Watts	218.6
Lumens per Watt (Efficacy)	104
Color Accuracy Color Rendering Index (CRI)	80
Light Color Correlated Color Temperature (CCT)	5000 (Daylight)

2700K 3000K 4500K 6500K

All results are according to IESNA LM-79-2008: *Approved Method for the Electrical and Photometric Testing of Solid-State Lighting*. The U.S. Department of Energy (DOE) verifies product test data and results.

Visit www.lightingfacts.com for the Label Reference Guide.

Registration Number: -X4FJFO (12/17/2013)
Model Number: BLEXT-200WLED-UNIV-5000K-CAL
Type: Luminaire - Industrial