

Project Name:	
Catalog Number:	Fixture Type:
Volts / Watts:	Lamps / Boards:



FLAT STRIP 2FT - 16W LED

COMMERCIAL

FEATURES

- Embedded LED's Provide Sleek Low Profile
- Frosted Acrylic Lens Lays Flush
- .040" Aluminum Pre-Painted White Housing
- 3000K-5000K Color Options
- Ceiling, Wall, or Suspension Mounting Options
- Multiple Dimming and Control Options
- Suitable for Installing in Continuous Runs
- 0-10V Dimming Driver (Std.)*
- 5 Year Warranty
- DesignLights Consortium® Qualified Luminaire

**To Ensure Lead Wires Are Attached, "DIM" Call Out Is Required When Building Part Number*



LED SYSTEM

Calculated L70 (TM-21)	>100K
Delivered Lumens	1,762lm
Total Input Watts	16W
Luminaire Efficacy Rating (LER)	110lm/W
Correlated Color Temperature (CCT)	4000K
Color Rendering Index (CRI)	>80
Max Ambient Temp	108°F
Min Ambient Temp	-4°F
Universal Driver	120-277V

LED System data above based on FF2-16WLED-UNIV-40
LED Lumen Maintenance Estimates based on TM-21 projections for the light source at 25°C ambient

SUITABLE APPLICATIONS

- Schools
- Offices
- Hallways
- Bathrooms



Intertek

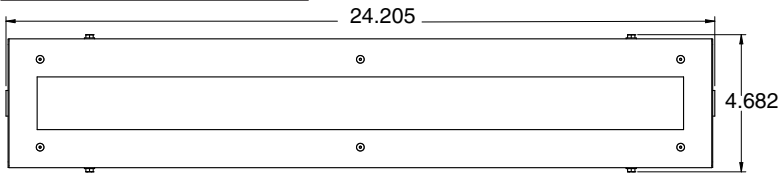
Ordering Guide

FF2	16WLED	UNIV	40	eg: CORDx	
Series	LED	Driver	Color	Options	
<input type="checkbox"/> FF2 Flat Strip 2ft	<input type="checkbox"/> 16WLED	<input type="checkbox"/> UNIV 120-277V Driver	<input type="checkbox"/> 30 <input type="checkbox"/> 35 <input type="checkbox"/> 40 <input type="checkbox"/> 50	<input type="checkbox"/> CORDx <input type="checkbox"/> MCWHIPx <input type="checkbox"/> FIOS <input type="checkbox"/> USBD <input type="checkbox"/> BDxx <input type="checkbox"/> BLD <input type="checkbox"/> DIM <input type="checkbox"/> SD480* <input type="checkbox"/> SD347* <input type="checkbox"/> FMB <input type="checkbox"/> HOOK <input type="checkbox"/> HUB 3/4" Conduit <input type="checkbox"/> HB-60-18Y-PAD <input type="checkbox"/> ES <input type="checkbox"/> ES/PCD	Cord (x = ft) Flexible Conduit (x = ft) On/Off Occupancy Sensor Installed User Select Bi-level Dim w/ Occ. Sensor Preset Bi-Level Dim Sensor (xx=% e.g. 20, 30) Bi-Level Dim Driver (2 Hot Leads) Dimming Leads Added 480V Step Down Transformer 347V Step Down Transformer Fixture Mounting Box Cast Iron, Single-Point Mount (Must Be Used w/ FMB) For Pendant Mounting (Must Be Used w/ FBM) Adjustable 60" Y-Pad Hanger Set EasySense Control Pre-Installed App On Control Device
			*Option Not Currently DLC Qualified		

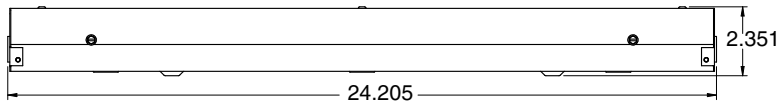
FLAT STRIP 2FT - 16W LED

COMMERCIAL

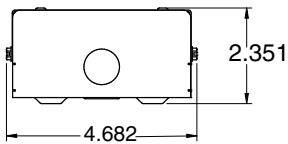
TOP ASSEMBLY VIEW



SIDE ASSEMBLY VIEW



END ASSEMBLY VIEW



MOUNTING OPTIONS

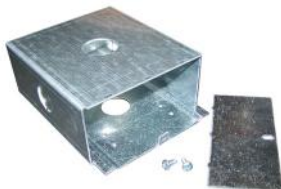
- **HUB 3/4" Conduit** - For Pendant Mounting (Must use w/ FMB for Single Mount)
- **Y-Toggle Cable Kit** - Includes 2 Adjustable 60" Y-Pad Cable Hangers
- **HOOK** - Cast Iron, Single-Point Mount (Must use w/ FMB)
- **Fixture Mounting Box (FMB)** - Includes Rigid Box to Attach to the Fixture, Provides for Single Point Mounting to Accept Hook or Conduit Hub (sold separately).



HB-60-18Y-PAD



HOOK



FMB



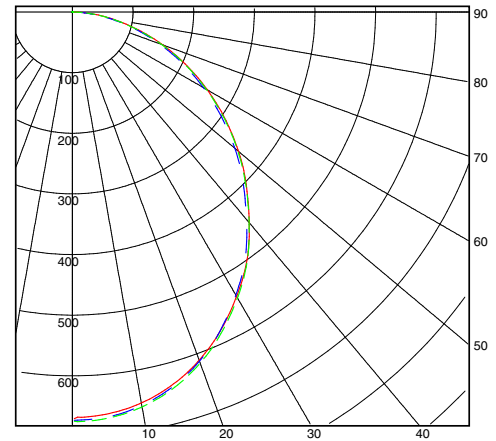
HUB 3/4"
CONDUIT

FF2-16WLED-UNIV-40

SUMMARY DATA

HEMISPHERES TESTED:	BOTH
EFFICIENCY (Total):	100.0 %
EFFICIENCY (Downlight):	100.0 %
EFFICIENCY (Uplight):	0.0 %
CIE CLASSIFICATION:	DIRECT
SPACING CRITERION (0-Deg.):	1.20
SPACING CRITERION (90-Deg.):	1.19
LUMENS/LAMP:	1761.21
NO. OF LAMPS:	1
LUMINOUS OPENING: RECTANGULAR	
Width:	0.15 (Feet)
Length:	1.85
Height:	0.00
INPUT WATTS:	16.4

PLANE AND CONE DIAGRAM



Photometric values based upon tests performed in compliance with LM-79. IES files can be downloaded at www.ilp-inc.com