



ES
EasySense

ILP

**Controls
Made Easy**

Table Of Contents

EasySense Control	2-4
FLT - Flat Lens Troffer	5
FLTR - Flat Lens Troffer Retrofit	6
VOLA - Volumetric Troffer	7
LANCE - Latch And Close	8
FZ - Complete Fixture	9
RZ - Retrofit	10
FWS - Shallow Wrap	11
SQ - Curved Wrap	12
FF - Flat Strip 2' & 4'	13
Field Installed Battery Backups	14



Controls Made Easy

Ideal solution for dramatically improving energy savings in commercial, educational, retail, and office environments with all the controls in the palm of your hand. The combination occupancy and daylight harvesting sensor is controlled via cell phone App enabling the user to easily create groups, setup zones, adjust maximum light output, hold time after motion detection, background light levels, prolonged time at background light levels, fade time between occupied and background light levels, and adjust ECO light levels. There is no commission, annual maintenance plan purchases, or scheduled technician visits required. Simply order the desired fixture with this feature pre-installed, download the App, and start taking control of your lighting environment today!

Features / Benefits

- Compact Occupancy / Daylight Harvesting In One Device
- Create Groups & Setup Zones
- Enabled App Allows You Complete Control Over:
 - Turning On / Off Occupancy And / Or Daylight Functions
 - Setting Maximum Lumen Output (100% - 5%)
 - Eco On Level (100% - 5%)
 - Hold Time Once Motion Is Detected (1 - 120 minutes)
 - Background Light Level When Space Is Unoccupied (100% - 5%)
 - Length Of Time Dimming From On To Background (0 - 25 Sec.)
 - Prolong Amount Of Time Background Level Lasts. (0 - ∞ minutes)
- Time To On / Off Light Levels At 0.7 Seconds
- Easily Controlled Via IR Enabled Android Smart Phone / Tablet
- Saved Program Profiles Allows For Easy Commissioning Of Multiple Zones
- Control Up To (4) Fixtures Per One Control
- Complies With Title 20 And Title 24 Requirements

Available In These Fixtures:

- FF
- FLT
- FLTR
- FWS
- FZ
- LANCE
- RZ
- SQ
- VOLA

Part Numbers:

ES:

Sensor with sensor ready driver factory installed.

SR:

Sensor Ready Driver installed without sensor for grouping units together. Max units tied to 1 ES unit = 4

ES/PCD:

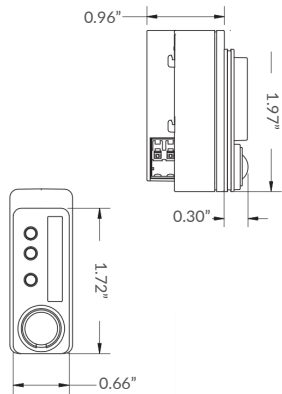
Pre-installed App on control device for commissioning. (1) per install needed, unless you have NFC Android enabled phone/tablet.

ES/WWS:

Wireless & Batteryless Dual Reader Wall Switch

Product Specifications

Dimensions



EasySense Overview

Specifications:

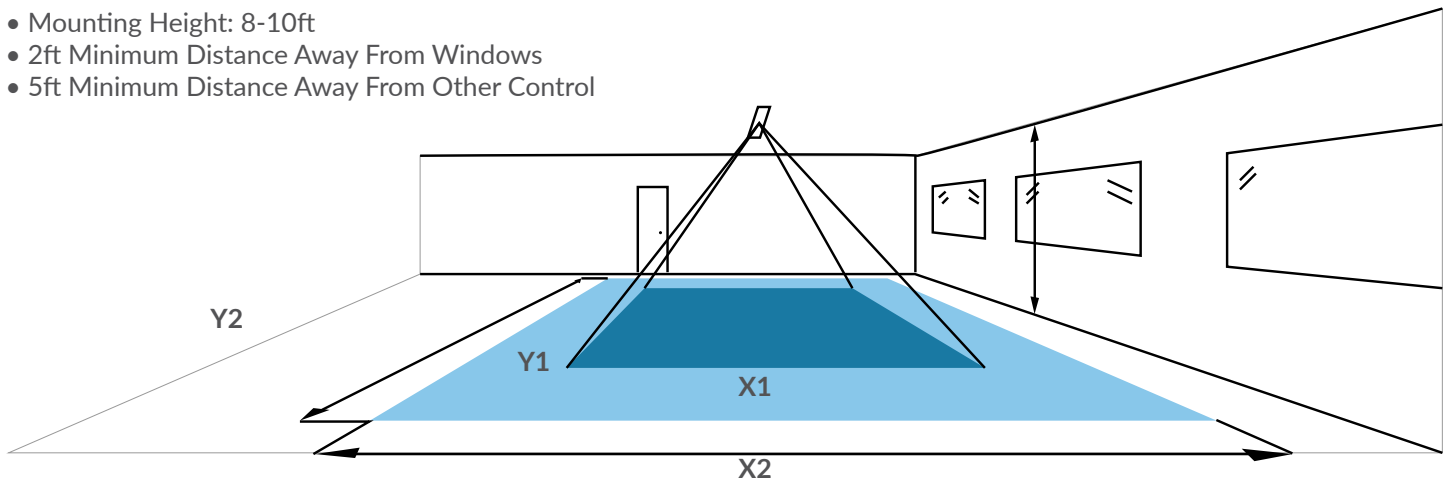


LED Indicator Lights



Installation Recommendations:

- Mounting Height: 8-10ft
- 2ft Minimum Distance Away From Windows
- 5ft Minimum Distance Away From Other Control

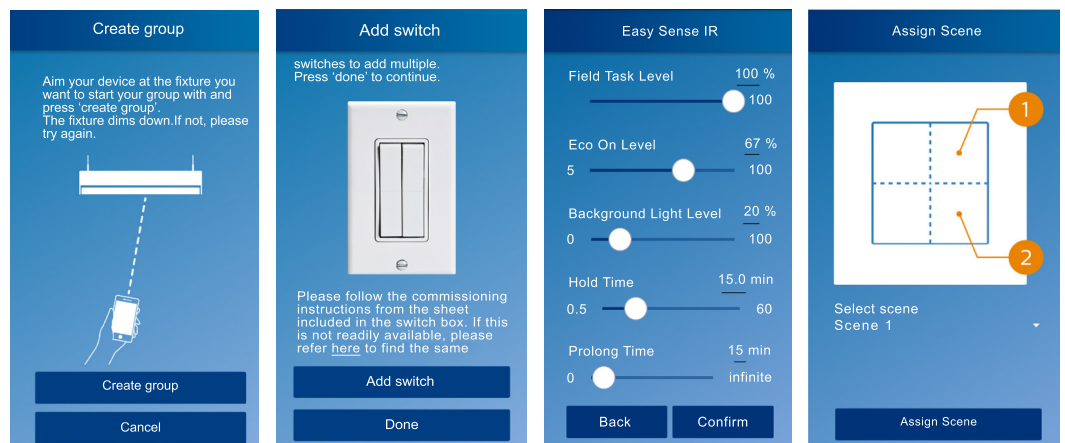


When installed in a typical office ceiling H, the sensor is sensitive to minor movements within X1 by Y1 area. It will cover minor movements down to a few centimeters at the task area of a desk and is sensitive to major movements within a range of X2 by Y2.

EasySense App Configuration

Program Steps

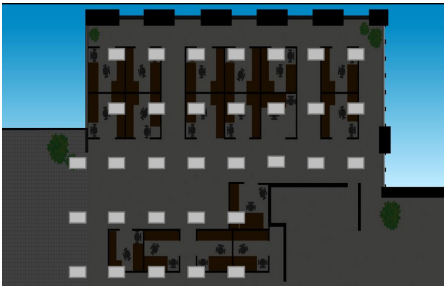
1. Create Group
2. Select Fixtures To Add
3. Add Wireless Wall Switch
4. Close Group
5. Configure Group Performance
6. Create Special Scenes For Wall Switch
7. Program Group
8. Relax & Enjoy



How It Works

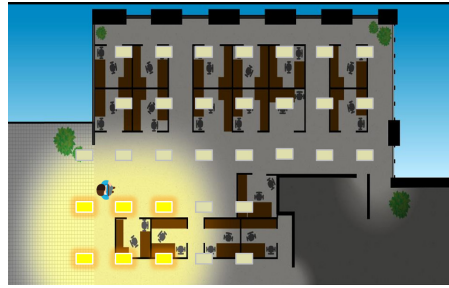
Grouping

1



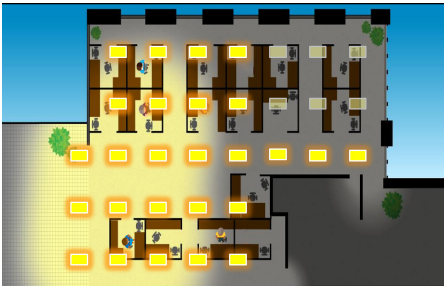
An open office Application.

2



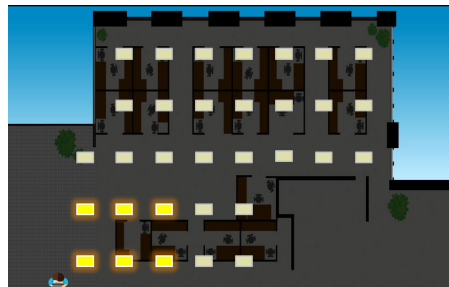
As people enter, lighting in their area brightens to "task level." While other fixtures in the group dim up to "background level."

3



As people begin leaving for the day, additional lights dim down.

4



After the last worker leaves, lights turn off after the configured "prolong time."

Wireless Wall Switch (ES/WWS)

1



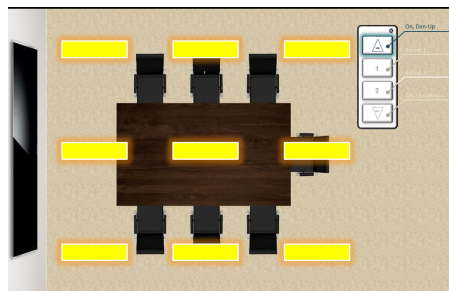
Specifications

- Wireless
- Batteryless
- Dual Rocker
- ZigBee®
- 30' - 100' ft Range

Functions

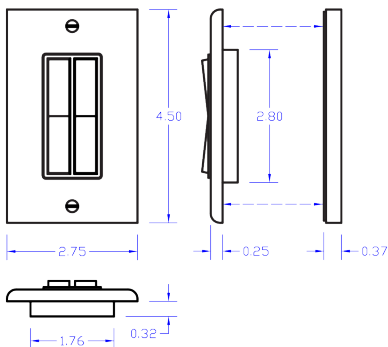
1. On (Hold To Brighten Up)
2. Off (Hold To Dim Down)
3. Scene 1
4. Scene 2

2

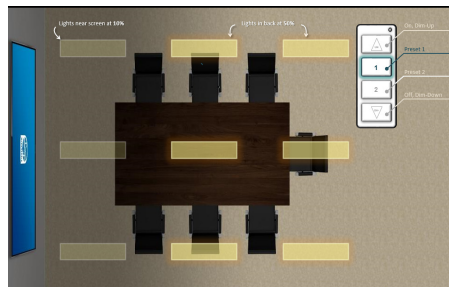


Pressing "ON" brings lights to "task level".

3



4



Pressing Scene 1 or Scene 2 takes lighting to pre-defined light level set.

Compatible Products

FLT - Flat Lens Troffer



Specifications:

- Architectural Design
- Flat Frosted Acrylic Lens
- .040 Aluminum Pre-Painted Housing
- Post Paint Available
- 3000K, 3500K, & 4000K Colors Available
- Multiple Wattage Options Ranging From 19W-45W
- Use Part Number DIMxx To Set Specific Wattage
- Universal Voltage
- 5 Yr. Warranty
- DesignLights Consortium® Premium Qualified Luminaire

Applications

- Offices
- Hallways
- Multipurpose Rooms
- Conference Rooms

EasySense Placement



Performance Guide

Wattage	1x4 Lm	1x4 Lm/W	2x2 Lm	2x2 Lm/W	2x4 Lm	2x4 Lm/W
19	2,341	125	2,319	124		
26					3,168	124
30	3,609	120	3,557	119		
35					4,171	119
45	5,137	114	5,009	112	5,140	115

Lm/W = Lumens Per Watt

FLTR - Flat Lens Troffer Retrofit



Specifications:

- Architectural Design
- Universal Brackets Allow For Install In Grid Or Hard Lid Ceilings
- Flat Frosted Acrylic Lens
- .040 Aluminum Pre-Painted Housing
- Post Paint Available
- 3000K, 3500K, & 4000K Colors Available
- 0-10V Dimmable Driver (100% - 5%)
- EasySense Control Available
- Universal Voltage
- 5 Yr. Warranty
- DesignLights Consortium® Premium Qualified Luminaire

Applications

- 1'x4', 2'x2', & 2'x4'
- Parabolic Louvers
- Prismatic Lenses

EasySense Placement



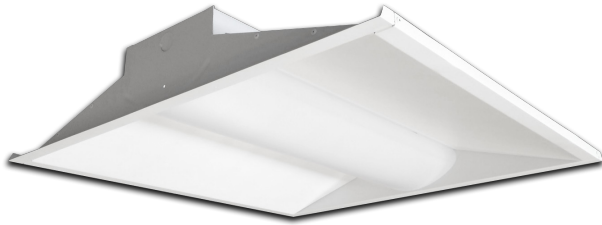
Performance Guide

Wattage	1x4 Lm	1x4 Lm/W	2x2 Lm	2x2 Lm/W	2x4 Lm	2x4 Lm/W
19	2,341	125	2,319	124		
26					3,168	124
30	3,609	120	3,557	119		
35					4,171	119
45	5,137	114	5,009	112	5,140	115

Lm/W = Lumens Per Watt

Compatible Products

VOLA - Volumetric Troffer



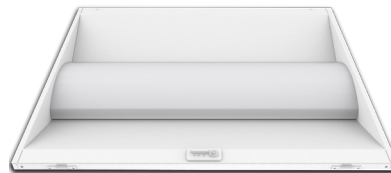
Specifications:

- Architecturally Designed Volumetric Troffer
- Made In America
- Available in 1x4, 2x2, & 2x4
- 4000K-3000K Colors Available
- .040 Aluminum Pre-Painted Housing (Std.)
- Post Paint Available
- Frosted Acrylic Lens Easily Removes For Cleaning
- Universal Voltage
- 5 Yr. Warranty
- DesignLights Consortium® Premium Qualified Luminaire

Applications

- Offices
- Hallways
- Multipurpose Rooms
- Conference Rooms

EasySense Placement



Performance Guide

Wattage	1x4 Lm	1x4 Lm/W	2x2 Lm	2x2 Lm/W	2x4 Lm	2x4 Lm/W
16	1,954	120	1,990	123		
22	2,799	125	2,709	118		
24					2,953	128
30	3,672	122	3,462	116	3,774	125
35	4,082	116	3,927	113	4,271	121
42	4,832	116	4,915	117	4,985	119
52	6,542	124	6,492	123	6,923	130
59	7,083	121			7,532	128

Lm/W = Lumens Per Watt

LANCE - Latch And Close



Specifications:

- LED Retrofit Kit For Recessed Lighting Application
- One-Piece Unit With Two Universal Mounting Brackets
- Universal Brackets Allow For Install In Grid Or Hard Lid Ceilings
- Multiple Lumen Outputs Available
- 3000K, 3500K, 4000K, And 5000K Available
- Philips Light Engines
- 5 Yr. Warranty
- DesignLights Consortium® Qualified

Applications

- 1'x4', 2'x2', & 2'x4'
- Parabolic Louvers
- Prismatic Lenses

EasySense Placement



Performance Guide

Wattage	1x4 Lm	1x4 Lm/W	2x2 Lm	2x2 Lm/W	2x4 Lm	2x4 Lm/W
13	1,579	116				
16			1,884	112		
22	2,705	122	2,572	116	2,950	123
30	3,545	118	3,650	105	3,756	125
35	4,042	114	3,650	105	4,256	121
42	4,765	112	4,766	112	4,960	116
52	6,215	120	6,128	117	6,454	121
59	6,904	117			7,265	123

Lm/W = Lumens Per Watt

Compatible Products

FZ - Complete Fixture



Specifications:

- 2FT, 4FT, & 8FT
- Durable Steel Construction
- Frosted Acrylic Lens Available
- Color Temps Available In 3000K, 3500K, 4000K, & 5000K
- Contact Factory For Other Wattage Options
- Dry And Damp Location Listed
- 5 Yr. Warranty
- DesignLights Consortium® Qualified

Applications

- Schools
- Warehouses
- Distribution Centers
- Retail Applications
- Manufacturing Facilities
- Hallways

EasySense Placement



4ft Unit



8ft Unit

Performance Guide

Size	Wattage	Lumens	Lm/W	Lumens Frosted	Lm/W Frosted
4ft	16	2,432	152	1,979	124
4ft	22	3,253	148	2,644	120
4ft	30	4,365	146	3,701	123
4ft	45	6,116	137	5,158	116
4ft	59	8,313	140	7,159	121
8ft	32	4,881	153	3,972	124
8ft	44	6,528	148	5,307	121
8ft	60	8,760	146	7,427	124
8ft	80	11,182	140	9,446	118
8ft	89	12,273	138	10,351	116
8ft	118	16,594	140	14,290	121

Lm/W = Lumens Per Watt

RZ - Retrofit



Specifications:

- 2FT, 4FT, & 8FT
- Durable Steel Construction
- Frosted Acrylic Lens Available
- Color Temps Available In 3000K, 3500K, 4000K, & 5000K
- Contact Factory For Other Wattage Options
- Dry And Damp Location Listed
- 5 Yr. Warranty
- DesignLights Consortium® Qualified

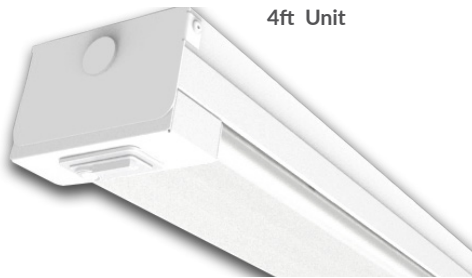
• RZ Components

- LED Channel x 1
- LED Driver x 1-2 Pending Wattage
- LED Driver Plate x 1-2 Pending Wattage
- Fixture ID Label x 1
- Self-Drilling Screws x 5-10 (4ft or 8ft)
- Driver Screws x 2-4 Pending Wattage

Applications

- Schools
- Warehouses
- Distribution Centers
- Retail Applications
- Manufacturing Facilities
- Hallways

EasySense Placement



4ft Unit



8ft Unit

Performance Guide

Size	Wattage	Lumens	Lm/W	Lumens Frosted	Lm/W Frosted
4ft	16	2,432	152	1,979	124
4ft	22	3,253	148	2,644	120
4ft	30	4,365	146	3,701	123
4ft	45	6,116	137	5,158	116
4ft	59	8,313	140	7,159	121
8ft	32	4,881	153	3,972	124
8ft	44	6,528	148	5,307	121
8ft	60	8,760	146	7,427	124
8ft	80	11,182	140	9,446	118
8ft	89	12,273	138	10,351	116
8ft	118	16,594	140	14,290	121

Lm/W = Lumens Per Watt

Compatible Products

FWS - Shallow Wrap



Specifications:

- Specification Grade For New Construction
- 23 Ga Die Formed Steel Housing
- Surface Mount Or Suspended
- Suitable For Continuous Runs
- Prismatic Wrap Around Lens
- Wire Cage Option Available (Replaces Prismatic Lens)
- 5 Yr. Warranty
- DesignLights Consortium® Qualified

Applications

- Offices
- Hallways
- Work Station Task Lighting

EasySense Placement

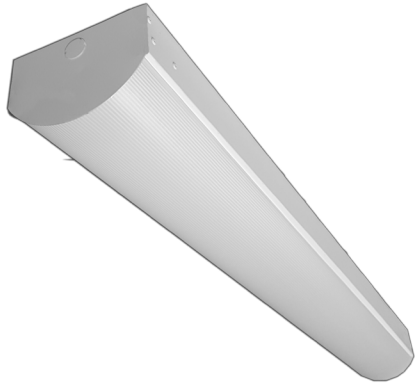


Performance Guide

Size	Wattage	Lumens	Lm/W
4ft	20	2,890	131
4ft	30	3,801	127
4ft	40	4,836	121
4ft	55	6,273	116
4ft	70	7,960	114
8ft	40	5,628	131
8ft	55	6,897	128
8ft	80	9,892	124

Lm/W = Lumens Per Watt

SQ - Curved Wrap



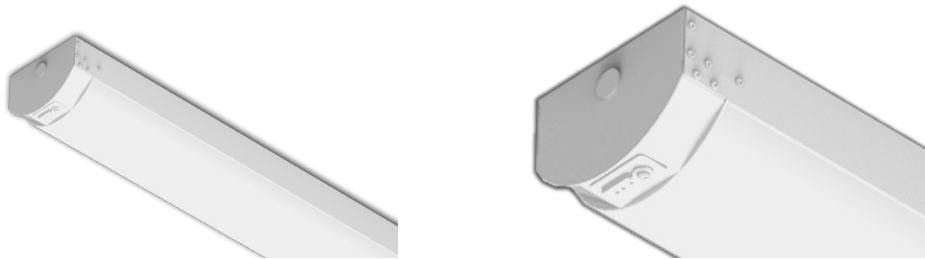
Specifications:

- Sleek Profile Curved Wrap
- 2 FT, 4 FT, & 8FT Configurations
- .040" Aluminum Pre-Painted White Housing
- Frosted Acrylic Impact Resistant Lens
- 3000K, 3500K, 4000K, & 5000K Color Options
- Ceiling, Wall, Or Suspension Mounting Options
- Multiple Dimming And Sensor Options To Fully Control Occupied & Unoccupied Light Levels
- Suitable For Installing In Continuous Runs
- EasySense Control Available
- DesignLights Consortium® Premium Qualified Luminaire

Applications

- Offices
- Hallways
- Schools
- Hospitals

EasySense Placement



Performance Guide

Size	Wattage	Lumens	Lm/W
2ft	16	1,983	117
2ft	22	2,595	115
4ft	16	2,078	127
4ft	30	3,694	123
4ft	44	5,086	116
8ft	32	4,018	126
8ft	60	7,329	122
8ft	88	10,236	115

Lm/W = Lumens Per Watt

Compatible Products

FF - Flat Strip 2' & 4'



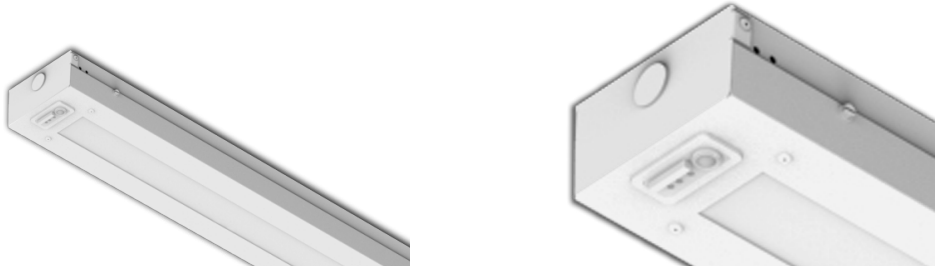
Specifications:

- Extremely Low Profile Flat Strip
- .040" Aluminum Pre-Painted White Housing
- Frosted Acrylic Impact Resistant Lens
- 3000K, 3500K, 4000K, & 5000K Color Options
- Ceiling, Wall, Or Suspension Mounting Options
- Multiple Dimming & Control Options
- Suitable For Installing In Continuous Runs
- DesignLights Consortium® Premium Qualified Luminaire

Applications

- Schools
- Offices
- Hallways
- Bathrooms

EasySense Placement



Performance Guide

Size	Wattage	Lumens	Lm/W
2ft	16	1,762	110
2ft	22	2,361	107
4ft	16	2,012	120
4ft	22	2,559	116
4ft	30	3,710	123
4ft	44	4,859	111

Lm/W = Lumens Per Watt

Field Installed LED Battery Backups



5W LED



7W LED



10W LED



12W LED



ORDERING GUIDE

Part Number	Description
<input type="checkbox"/> ILBCP05	5W LED Battery Backup
<input type="checkbox"/> ILBCP07	7W LED Battery Backup
<input type="checkbox"/> ILBCP10	10W LED Battery Backup
<input type="checkbox"/> ILBCP12	12W LED Battery Backup

Mounting hardware not included
 Mounting hardware not included
 Mounting hardware not included
 Mounting hardware not included

PERFORMANCE DATA		4000K	ILBCP05	ILBCP07	ILBCP10	ILBCP12	ILBSLCP05	ILBSLCP07
Fixture Part Number	Fixture Lumens	BB Lumens	BB Lumens	BB Lumens	BB Lumens	BB Lumens	BB Lumens	BB Lumens
BOB-24WLED-2BD-UNIV-XX00K	2,136	445*	623	890	1,068	445*	623*	
BOB-24WLED-3BD-UNIV-XX00K	2,369	515*	721	1,030	1,236	515*	721*	
BOB-30WLED-3BD-UNIV-XX00K	2,871	495	693	990	1,188	495*	693*	
BOB-30WLED-4BD-UNIV-XX00K	2,842	490	686	980	1,176	490*	686*	
BOB-36WLED-4BD-UNIV-XX00K	3,290	470	658	940	1,128	470*	658*	
BOB-42WLED-4BD-UNIV-XX00K	4,100	500	700	1000	1,200	500	700	
BOB-60WLED-6BD-UNIV-XX00K	5,959	505	707	1010	1,212	505	707	
BIF-22-25WLED-UNIV-40	2,447	490	686	980	1,176	490	686	
BIF-22-30WLED-UNIV-40	3,017	500	700	1000	1,200	500	700	
BIF-24-30WLED-UNIV-40	3,162	525	735	1,050	1,260	525	735	
BIF-24-37WLED-UNIV-40	4,062	545	763	1,090	1,308	545	763	
BIF-24-43WLED-UNIV-40	4,499	525	735	1,050	1,260	525	735	
LANCE14-22WLED-UNIV-40	2,705	602	843	1,205	1,446	602	843	
LANCE14-30WLED-UNIV-40	3,545	587	821	1,173	1,408	587	821	
LANCE14-35WLED-UNIV-40	4,042	572	801	1,144	1,373	572	801	
LANCE14-42WLED-UNIV-40	4,765	558	782	1,117	1,340	558	782	
LANCE14-52WLED-UNIV-40	6,215	605	847	1,210	1,452	605	847	
LANCE14-59WLED-UNIV-40	6,904	587	821	1,173	1,408	587	821	
LANCE22-22WLED-UNIV-40	2,572	580	812	1,160	1,342	580	812	
LANCE22-30WLED-UNIV-40	3,650	525	735	1,050	1,260	525	735	
LANCE22-35WLED-UNIV-40	3,650	525	735	1,050	1,260	525	735	
LANCE22-42WLED-UNIV-40	4,766	562	786	1,123	1,348	562	786	
LANCE22-52WLED-UNIV-40	6,128	587	821	1,173	1,408	587	821	
LANCE24-30WLED-UNIV-40	3,756	615	861	1,230	1,471	615	861	
LANCE24-35WLED-UNIV-40	4,256	605	847	1,210	1,452	605	847	
LANCE24-42WLED-UNIV-40	4,960	580	812	1,160	1,392	580	812	
LANCE24-52WLED-UNIV-40	6,454	605	847	1,210	1,452	605	847	
LANCE24-59WLED-UNIV-40	7,265	615	861	1,230	1,476	615	861	

*For BOB 2x2 configurations, options limited to these marked items



“Your Number One Source For Energy Efficient Lighting”

Ph: 407-478-3759 Fax: 407-478-3760
519 Codisco Way, Sanford, FL 32771
www.ilp-inc.com