

Project Name:	Part Number:	Type:
---------------	--------------	-------

# LANCE 2' X 2' - 90CRI

LED - LATCH AND CLOSE

**90CRI**



## FEATURES

- LED Retrofit Kit for recessed lighting application
- One-piece unit with universal mounting brackets for rapid installation
- 3500K and 4000K available
- Pre-painted aluminum
- Acrylic frosted lens easily removes for cleaning
- Tool-less access to driver
- 0-10V Dimmable Driver (100% - 5%)
- ETL Listed for (UL1598C)
- 5 year warranty on components
- DesignLights Consortium® Qualified Luminaire



## SUITABLE APPLICATIONS

- 2x2's
- Parabolic Louvers
- Prismatic Lenses

LED SYSTEMS INFO	16W	22W	30W	35W
Calculated L <sub>70</sub> (TM-21)	>100K	>100K	>100K	>100K
Delivered Lumens	1,924 lm	2,501 lm	3,302 lm	3,769 lm
Total Input Watts	17 W	22 W	30 W	35 W
Luminaire Efficacy Rating (LER)	112 lm/W	112 lm/W	111 lm/W	109 lm/W
Correlated Color Temperature (CCT)	4000K	4000K	4000K	4000K
Color Rendering Index (CRI)	>90	>90	>90	>90
Ambient Temperature Range	110°F	110°F	110°F	110°F
Universal Driver	120-277 V	120-277 V	120-277 V	120-277 V

LED System data above based on LANCE22-16WLED-UNIV-40-90CRI, LANCE22-22WLED-UNIV-40-90CRI, LANCE22-30WLED-UNIV-40-90CRI, & LANCE22-35WLED-UNIV-40-90CRI  
LED Lumen maintenance estimates based on TM-21 projections for the light source at 25 C ambient.

## ORDERING GUIDE:

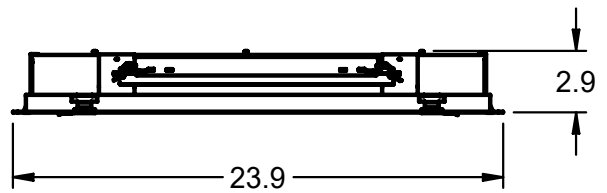
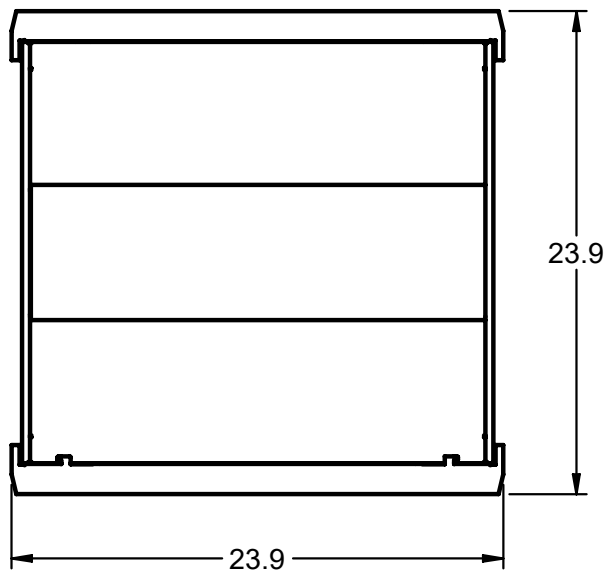
Series	Watts	Driver	Color	Options
<b>LANCE22-90CRI</b> Latch & Close 2'x2'	<b>16WLED</b>	<b>UNIV</b> 120-277V Driver	<b>40</b>	<b>POSTP</b> Post Painted Aluminum
	<b>22WLED</b>		<b>35</b>	<b>ES</b> EasySense Control
	<b>30WLED</b>		<b>ES/PCD</b> Pre-Installed App on Control Device for Commissioning	
	<b>35WLED</b>		<b>ES/WWS</b> EasySense Wall Switch	
				<b>SR</b> DALI-Enabled Driver Installed
				<b>DIMxx</b> Factory Set Custom Dim Level (1% Dimming Driver)
				<b>BLD*</b> Bi-Level Dim Driver (2 hot leads)
				<b>FI/ILBCP05†</b> Factory Installed 5W LED Battery Backup
				<b>FI/ILBCP07†</b> Factory Installed 7W LED Battery Backup
				<b>FI/ILBCP10†</b> Factory Installed 10W LED Battery Backup
				<b>FI/ILBCP12†</b> Factory Installed 12W LED Battery Backup
				<b>SD480*</b> 480V Step Down Transformer
				<b>SD347*</b> 347V Step Down Transformer

† BB performance data available on field installed LED BB Sheet  
\* Does not qualify for DLC

# LANCE 2' X 2' - 90CRI

LED - LATCH AND CLOSE

## LINE DRAWINGS



## MOUNTING OPTIONS

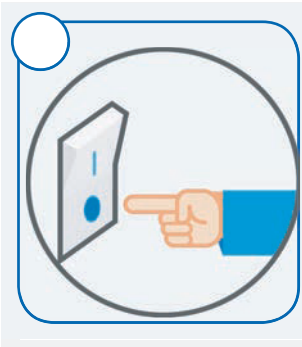


Universal Mounting Bracket

# LANCE 2' X 2' - 90CRI

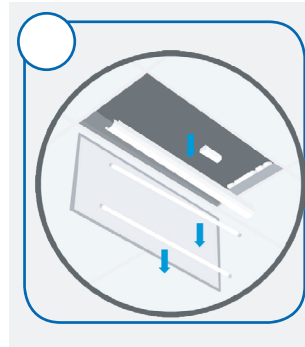
## LED - LATCH AND CLOSE

### INSTALLATION INSTRUCTIONS



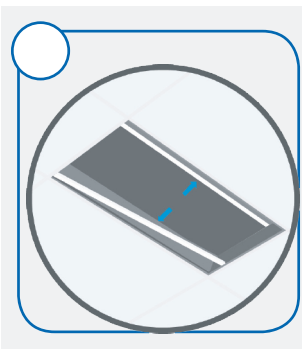
**STEP 1**

Shut off or disconnect power to the fixture.



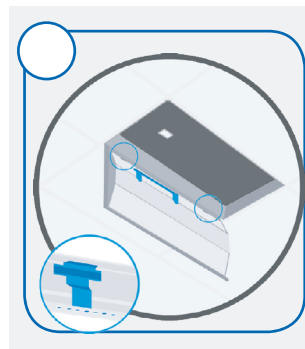
**STEP 2**

Remove existing fluorescent lamps and components, then disconnect existing connections to the fluorescent ballast.



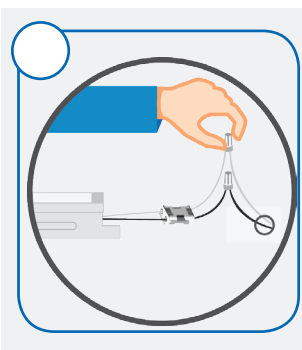
**STEP 3**

Gently lift the original housing and insert the brackets between the housing and the T-grid. Allow the housing to rest on the brackets, securing them in place.



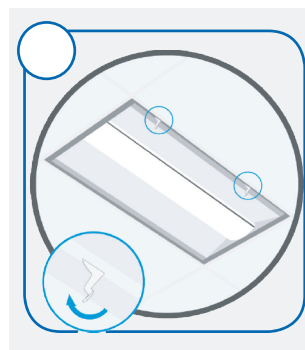
**STEP 4**

Hang the LANCE body by hooking the T-hinges into the respective slots in the bracket.



**STEP 5**

Connect the LANCE to AC power and ground.



**STEP 6**

Rotate the LANCE body up into the fixture and close the latches. Turn on or reconnect power to the fixture to complete the installation.

ILP Recommends a Test Install be Performed Prior to Placing Order.