

Project Name:

Part Number:

# RACK AISLE HIGH BAY - 40W LED

## 4ft HIGH BAY



407-478-3759  
www.ilp-inc.com

### FEATURES

- Aluminum body with riveted construction & high gloss polyester white paint
- 95% Enhanced aluminum narrow distribution reflector
- Multiple dimming & sensor options to fully control occupied & unoccupied light levels
- Single fixture or continuous row
- 4000K and 5000K color options
- 5 Year warranty
- ETL Damp listed
- 0-10V Dimmable Driver
- DesignLight Consortium® Premium Qualified Luminaire\*

\*Qualified as a low-bay and direct linear ambient luminaire



### SUITABLE APPLICATIONS

- Aisleways
- Warehouses
- Distribution Centers
- Manufacturing Plants

LED SYSTEMS INFORMATION	4000K	5000K
Calculated L <sub>70</sub> (TM-21)	>100K	>100K
Delivered Lumens	5,972 lm	6,135 lm
Total Input Watts	41 W	41 W
Luminaire Efficacy Rating (LER)	146 lm/W	150 lm/W
Correlated Color Temperature (CCT)	4000K	5000K
Color Rendering Index (CRI)	>80	>80
Ambient Temperature Range	-40°F - 135°F	-40°F - 135°F
Universal Driver	120-277 V	120-277 V

LED System data above based on RAH-40WLED-UNIV-40 & RAH-40WLED-UNIV-50  
LED Lumen Maintenance Estimates based on TM-21 projections for the light source at 25°C ambient.

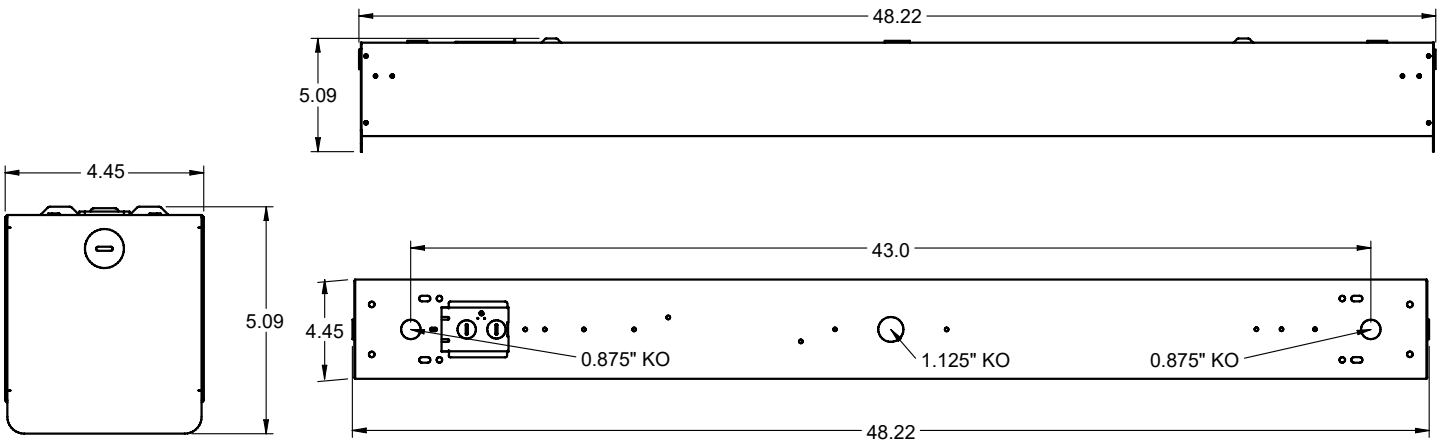
### ORDERING GUIDE:

Series	Watts	Driver	Color	Options
RAH Aisle Bay 4ft	40WLED	UNIV 120-277V Driver	50 40	WC* FIOS FIOS/PC USDC USBD BDxx BDxxPC FIOSPC/DLH FMB AB HOOK HUB 3/4" HB-XX-18Y-PAD SD480* FI/ILBCP05 FI/ILBCP07 FI/ILBCP10 FI/ILBCP12
				Wire Cage On/Off Occupancy Sensor Installed On/Off Occupancy Sensor w/ Photocell User Selectable Dimming Control User Select Bi-level Dim w/ Occ. Sensor Preset Bi-Level Dim Sensor (xx=%eg.20,30) Preset Bi-Level Dim Sensor with Photocell Daylight Harvesting Fixture Mounting Box Bracket for Continuous Row Cast Iron Hook For Single Point Mounting Conduit Hub 3/4" For Pendant Mounts Y-Toggle Cable System (XX = in) 480V Step Down Transformer 5W LED Factory Installed Battery Backup 7W LED Factory Installed Battery Backup 10W LED Factory Installed Battery Backup 12W LED Factory Installed Battery Backup

\* Option does not meet DLC

# RACK AISLE HIGH BAY - 40W LED

## 4ft HIGH BAY

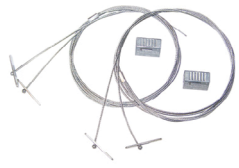


## MOUNTING OPTIONS

- **V-Clips** - Dual point chain or cable hanging (Std.)
- **HB-XX-18Y-PAD** - Includes two adjustable cable hangers
- **Fixture Mounting Box (FMB)** - Includes rigid box to attach to the fixture, provides for single point mounting to accept a pendant, hook or conduit hub (sold separately).
- **SMBZKIT** - Surface mount bracket kit. Provides a 2" space above the fixture.



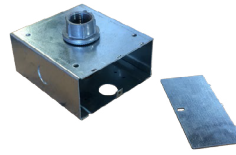
V-CLIPS



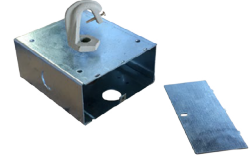
HB-XXX-PAD



SMBZKIT



FMB & HUB  
3/4" CONDUIT



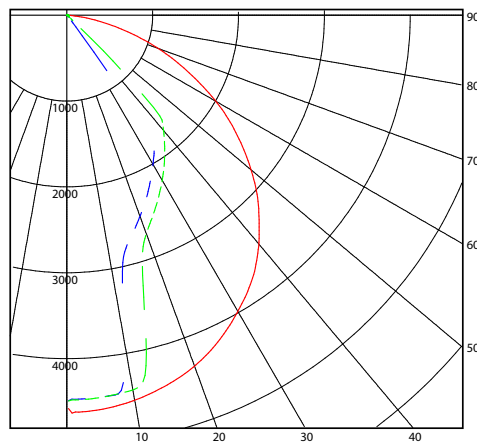
FMB & HOOK

## RAH-40WLED-UNIV-50

### SUMMARY DATA

EFFICIENCY (Downlight):	100.0 %
EFFICIENCY (Uplight):	0.0 %
CIE CLASSIFICATION:	DIRECT
SPACING CRITERION (0-Deg.):	1.31
SPACING CRITERION (90-Deg.):	0.64
LUMENS:	5710
INPUT WATTS:	40.683

### CANDELA PLOT



Quadrilaterally Symmetric  
 Solid: 0 Degrees  
 Small Dash: 45 Degrees  
 Large Dash: 90 Degrees

Photometric values based upon tests performed in compliance w/ LM-79.  
 Download IES files at [www.ilp-inc.com](http://www.ilp-inc.com)