

Project Name:	Part Number:	Type:
---------------	--------------	-------

LANCE 2'X 2'

LED - LATCH AND CLOSE



407-478-3759
www.ilp-inc.com

FEATURES

- LED Retrofit Kit for recessed lighting application
- One-piece unit with universal mounting brackets for rapid installation
- 3000K, 3500K, 4000K & 5000K CCT
- Pre-painted aluminum
- Acrylic frosted lens easily removes for cleaning
- Toolless access to driver
- 0-10V Dimmable Driver (100% - 10%)
- ETL Listed for (UL1598C)
- 5 Year Warranty on components
- DesignLights Consortium® Qualified Luminaire



SUITABLE APPLICATIONS

- 2x2's
- Parabolic Louvers
- Prismatic Lenses
- Air-Handling Units (Custom Configuration, Contact Factory)

LED SYSTEMS INFO	16W	22W	26W	30W	35W	52W
Calculated L ₇₀ (TM-21)	>100K	>100K	>100K	>100K	>100K	>100K
Delivered Lumens	2,025 lm	2,839 lm	3,326 lm	3,843 lm	4,466 lm	6,128 lm
Total Input Watts	16 W	22 W	26 W	31 W	35 W	52 W
Luminaire Efficacy Rating (LER)	124 lm/W	127 lm/W	128 lm/W	126 lm/W	126 lm/W	117 lm/W
Correlated Color Temperature (CCT)	4000K	4000K	4000K	4000K	4000K	4000K
Color Rendering Index (CRI)	>80	>80	>80	>80	>80	>80
Ambient Temperature Range	110°F	110°F	110°F	110°F	110°F	110°F
Universal Driver	120-277 V	120-277 V	120-277 V	120-277 V	120-277 V	120-277 V

LED System data above based on LANCE22-16WLED-UNIV40, LANCE22-22WLED-UNIV40, LANCE22-26WLED-UNIV40, LANCE22-30WLED-UNIV40, LANCE22-35WLED-UNIV40, LANCE22-52WLED-UNIV40 & LANCE22-56WLED-UNIV40. LED Lumen maintenance estimates based on TM-21 projections for the light source at 25°C ambient.

ORDERING GUIDE:

Series	Watts	Driver	Color	Options
LANCE22 Latch & Close 2'x2'	16WLED	UNIV 120-277V Driver	50	POSTP Post Painted Aluminum
	22WLED		40	ES EasySense Control
	26WLED		35	ES/PCD Pre-Installed App on Control Device for Commissioning
	30WLED		30	ES/WWS EasySense Wall Switch
	35WLED			SR Sensor Ready Driver
	52WLED			DR DALI-Ready Driver
				VDO [†] Lutron Vive DFCSJ-OEM-OCC (Daylight & Occupancy)
				VRF [†] Lutron Vive DFCSJ-OEM-RF (RF Only)
				DIM DIM leads to Driver
				DIMxx Factory Set Custom Dim Level (1% Dimming Driver)
				BLD Bi-Level Dim Driver (2 hot leads)
				FI/ILBCP05 [†] Factory Installed 5W LED Battery Backup
				FI/ILBCP07 [†] Factory Installed 7W LED Battery Backup
		FI/ILBCP10 [†] Factory Installed 10W LED Battery Backup		
		FI/ILBCP12 [†] Factory Installed 12W LED Battery Backup		
		SD480 480V Step Down Transformer		
		SD347 347V Step Down Transformer		

DLC Premium includes:

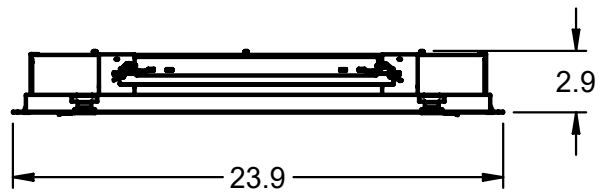
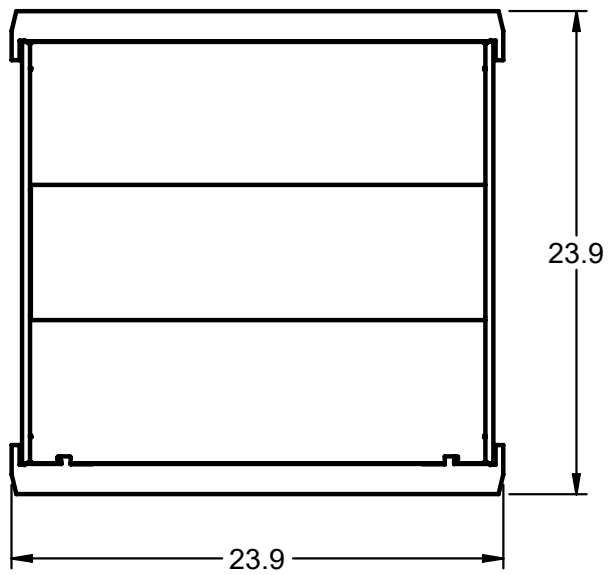
LANCE22-16WLED-UNIV-50, LANCE22-22WLED-UNIV-50, LANCE22-26WLED-UNIV-30, LANCE22-26WLED-UNIV-35, LANCE22-26WLED-UNIV-40, LANCE22-26WLED-UNIV-50, LANCE22-30WLED-UNIV-35, LANCE22-30WLED-UNIV-40, LANCE22-30WLED-UNIV-50, LANCE22-35WLED-UNIV-50,

[†]BB performance data available on field installed LED BB Sheet
[†]Must be used with SR Driver

LANCE 2'X2'

LED - LATCH AND CLOSE

LINE DRAWINGS



MOUNTING OPTIONS

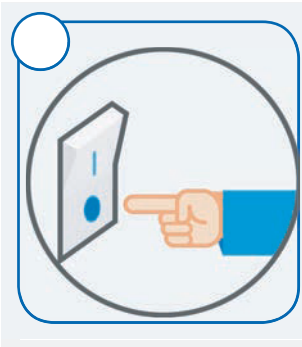


Universal Mounting Bracket

LANCE 2' X 2'

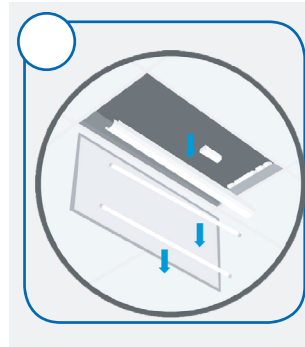
LED - LATCH AND CLOSE

INSTALLATION INSTRUCTIONS



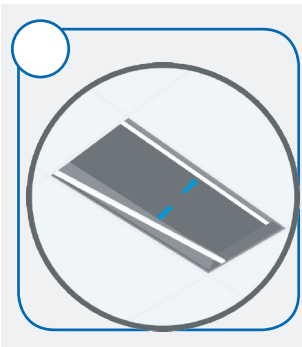
STEP 1

Shut off or disconnect power to the fixture.



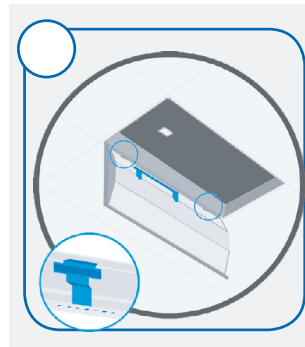
STEP 2

Remove existing fluorescent lamps and components, then disconnect existing connections to the fluorescent ballast.



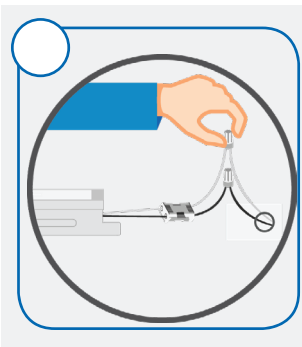
STEP 3

Gently lift the original housing and insert the brackets between the housing and the T-grid. Allow the housing to rest on the brackets, securing them in place.



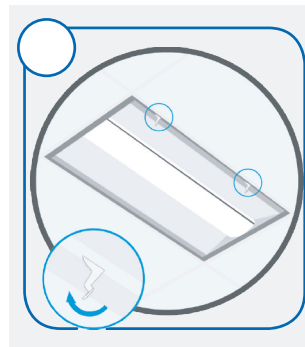
STEP 4

Hang the LANCE body by hooking the T-hinges into the respective slots in the bracket.



STEP 5

Connect the LANCE to AC power and ground.



STEP 6

Rotate the LANCE body up into the fixture and close the latches. Turn on or reconnect power to the fixture to complete the installation.

ILP Recommends a Test Install be Performed Prior to Placing Order.