

Project Name:	Part Number:	Type:
---------------	--------------	-------

AMBER AREA LIGHT - 100W



407-478-3759
www.ilp-inc.com

OUTDOOR

FEATURES

- Sleek low profile die cast aluminum housing (bronze housing)
- Type II, III, IV, & V5 optics available
- Tool-less hinged drop down driver access
- Universal Pole Mounting Bracket available (UPMB)
- Swappable driver cover
- IP66 Rated
- Amber LEDs 585-595nm Dominant Wave Length
- 0-10V Dimmable Driver
- Dark Sky Compliant
- 5 year warranty



SUITABLE APPLICATIONS

- Parking Lots
- Beachfront Buildings
- Pathways
- Pool Decks
- Hotels
- Retail
- Car Dealerships
- Shopping Centers
- Condominium

LED SYSTEMS INFO		T4	FWC
Calculated L ₇₀	AMBER	>33.3K	>33.3K
Delivered Lumens (25 °C)		3,789 lm	1,925 lm
Total Input Watts		96.4 W	96.4 W
Maximum Ambient Temperature		117°F	117°F
Universal Driver		120-277 V	120-277 V
LED System data above based on scaled Goniophotometer results. Note: IES files available for T4 and FWC configuration. Note: FWC has T4 optics and FGS as standard options. Note: FWC system data is based on T4 and FGS options installed.			



FGS option available:



Wildlife Lighters Certification Number: 2018-03

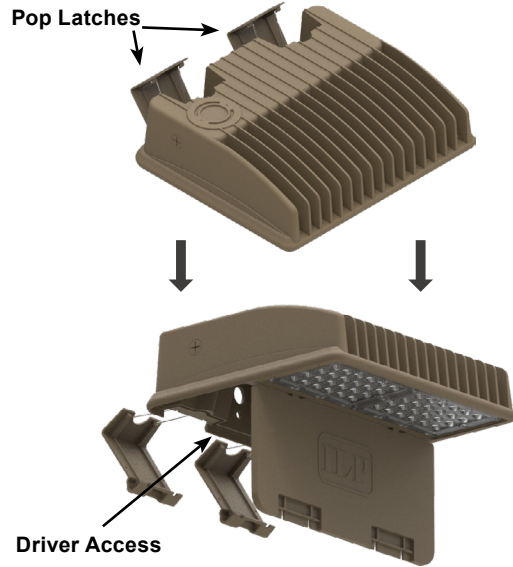
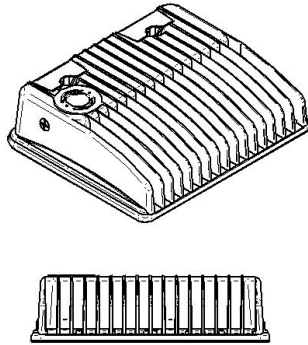
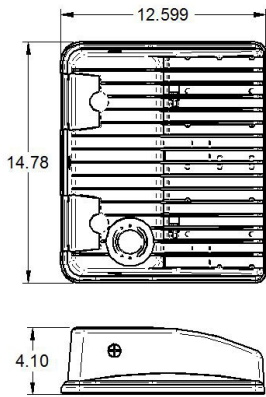
ORDERING GUIDE:

Series	Watts	Driver	Color	Optics	Options
AL Area Light	100WLED	UNIV 120-277V	AMBER	T2 T3 T4 T5S	FGS Front Side Glare Shield UPMB Universal Pole Mounting Bracket UPMB/R Universal Pole Mounting Bracket w/ Round Pole Adapter 4"-5" WMB Wall Mount Bracket AL-SLPF Adjustable Slip Fitter AL-SB Adjustable Swivel Bracket HTMA Horizontal Tenon Mount Adaptor ARM6-S 6" Straight Arm Adaptor for Square Pole ARM6-Rx 6" Straight Arm Adaptor for Round Pole (x = diameter) SP1 10kA Max Univolt Surge Protector SP2 22kA Max Univolt Surge Protector SP480V2 20kA Max 480V Surge Protector TLPC Univ. twist lock photocell factory installed receptacle w/ field installed photocell 7PIN/PC/R 7 Pin Photocell Factory Installed Receptacle WLOS Wet Location Rated Occupancy Sensor USBD User Select Bi-Level Din w/ Occ. Sensor BDxx Preset Bi-Level Dim Sensor (xx=% eg. 20, 30) BDxxPC Preset Bi-Level Dim Sensor w/ Photocell (xx=% eg. 20, 30) FSIR/100 Remote Configuration Tool for WLOS & USBD Control Options SD480V 480V Step Down Transformer SD347V 347V Step Down Transformer

AMBER AREA LIGHT - 100W

TOOL-LESS DRIVER ACCESS

OUTDOOR



MOUNTING OPTIONS

- **UPMB** - Universal Pole Mounting Bracket
- **UPMB/R** - Universal Pole Mounting Bracket
- **WMB** - Wall Mount Bracket
- **AL-SLPF** - Adjustable Slip Fitter
- **AL-SB** - Swivel Bracket
- **HTMA** - Horizontal Tenon Mount Adaptor
- **ARM6-S** - 6" Straight Arm Adaptor For Square Pole
- **ARM6-Rx** - 6" Straight Arm Adaptor For Round Pole (x = \emptyset)

EPA RATINGS	ARM6-S	UPMB	HTMA	AL-SLPF	AL-SB
AL-100WLED	0.61 ft ²	0.76 ft ²	0.58 ft ²	0.71 ft ²	0.60 ft ²

WEIGHT

17.2 LB

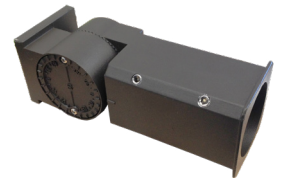
* EPA Ratings listed assume fixture is mounted horizontally. For adjustable mounting options, EPA will vary with selected angle.



UPMB



WMB



AL-SLPF



AL-SB



HTMA

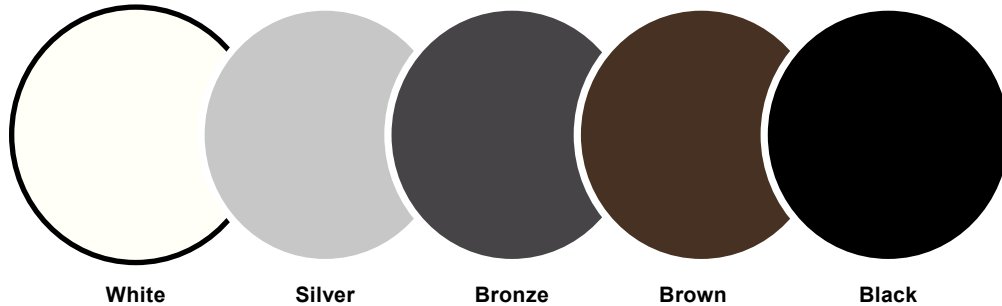


ARM6-S
(Available for Square or Round Pole)

AMBER AREA LIGHT - 100W LED

OUTDOOR

COLOR GUIDE



COLOR NAME AND DESCRIPTION	SHEEN	PRODUCT	VENDOR
WHT - ILP White	SEMI GLOSS	POLANE T	SHERWIN-WILLIAMS
SLV - ILP Silver - Ultrasonic Chrome	GLOSS	POLANE T	SHERWIN-WILLIAMS
BRZ - ILP Bronze - std. & in stock	SEMI GLOSS	POLANE T	SHERWIN-WILLIAMS
BRN - ILP Brown	SEMI GLOSS	POLANE T	SHERWIN-WILLIAMS
BLK - ILP Black	SEMI GLOSS	POLANE T	SHERWIN-WILLIAMS

**COLORS SHOWN ABOVE ARE TO BE USED AS REFERENCE, NOT EXACT MATCH.
PLEASE REQUEST PAINT CHIPS FOR EXACT MATCH.**

AMBER AREA LIGHT - 100W LED

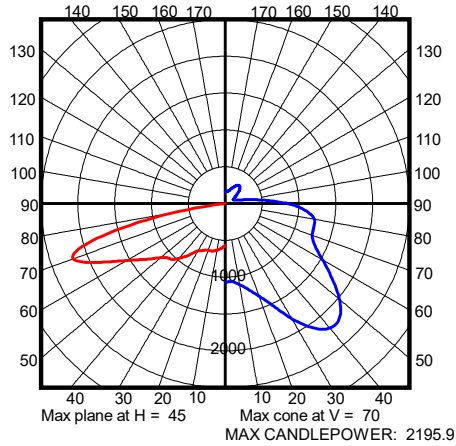
OUTDOOR

AL-100WLED-UNIV-AMBER-T4

SUMMARY DATA

HEMISPHERES TESTED:	BOTH
EFFICIENCY (Downlight/Uplight):	100.0 % / 0.0 %
EFFICIENCY (Street/House):	74.3 % / 21.7 %
ROADWAY CLASSIFICATION:	TYPE IV, SHORT
CUTOFF CLASSIFICATION:	NONCUTOFF
LUMENS:	3,788.93
INPUT WATTS:	96.2635

CANDELA PLOT



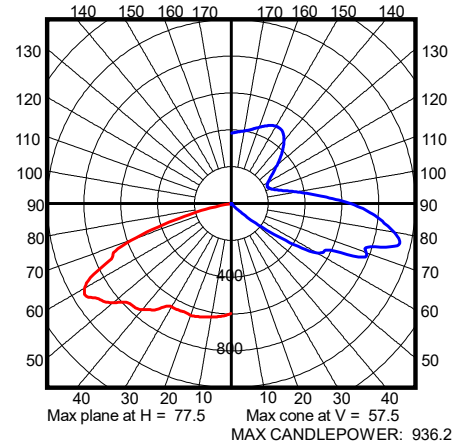
Photometric values based upon tests performed in compliance w/ LM-79.
Download IES files at www.ilp-inc.com

AL-100WLED-UNIV-AMBER-T4-FGS

SUMMARY DATA

HEMISPHERES TESTED:	BOTH
EFFICIENCY (Downlight/Uplight):	100.0 % / 0.0 %
EFFICIENCY (Street/House):	50.6 % / 49.4 %
ROADWAY CLASSIFICATION:	TYPE I, SHORT
CUTOFF CLASSIFICATION:	NONCUTOFF
LUMENS:	1,925.401
INPUT WATTS:	96.403

CANDELA PLOT



Photometric values based upon tests performed in compliance w/ LM-79.
Download IES files at www.ilp-inc.com