

Project Name:

Part Number:

Type:

DOUBLE RIGHT ANGLE WOOD POLE BRACKET



407-478-3759
www.ilp-inc.com

FEATURES

- Double luminaire 2-3/8" tenon curved wood pole mounting bracket with 30" spacing
- Body is steel tube constructed from A500 Grade B Steel
- Weight: 25 lbs
- Max luminaire weight: 100 lbs
- Coated with a durable polyester powder coat finish to withstand extreme weather changes without cracking or peeling (Consult Factory for custom colors)
- 5-Year warranty



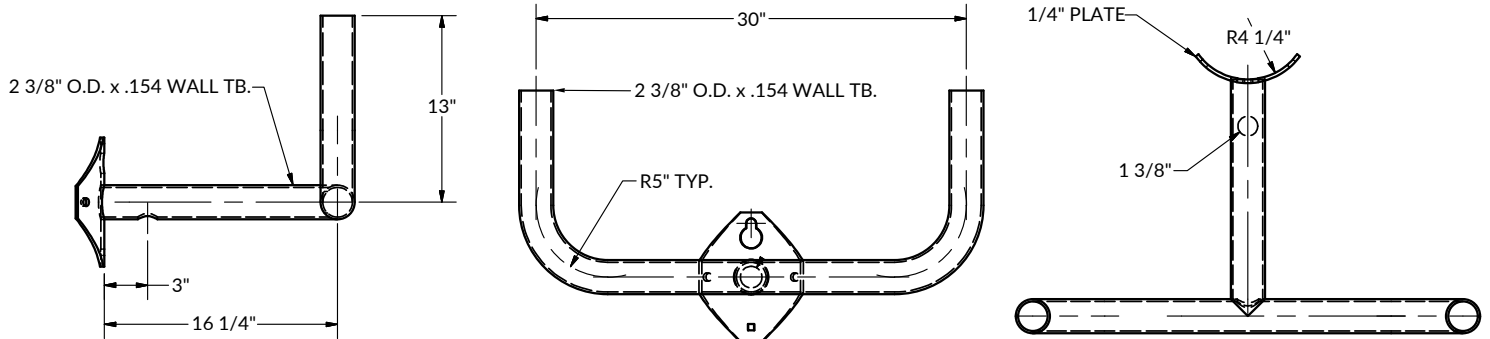
COMPATIBLE WITH

- AL
- CFS
- CFM
- SAS
- SAM
- VFM
- VFL
- VFX
- VAS
- VAM

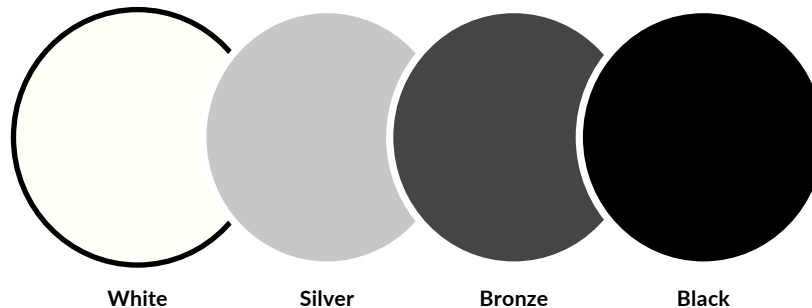
ORDERING GUIDE:

SERIES	FINISH	
DF-30	BRZ	Bronze
	BLK	Black
	SLV	Silver
	WHT	White

LINE DRAWINGS



FACTORY SELECT COLOR GUIDE



COLORS SHOWN ABOVE ARE TO BE USED AS REFERENCE, NOT EXACT MATCH.
PLEASE REQUEST PAINT CHIPS FOR EXACT MATCH.