

Project Name:

Part Number:

Type:

DOUBLE RIGHT ANGLE WALL MOUNT BRACKET



407-478-3759
www.ilp-inc.com

FEATURES

- Double luminaire 2-3/8" tenon wall mounting bracket with 30" spacing
- Body is steel tube constructed from A500 Grade B Steel
- Weight: 23 lbs
- Max luminaire weight: 100 lbs
- Coated with a durable polyester powder coat finish to withstand extreme weather changes without cracking or peeling (Consult Factory for custom colors)
- 5-Year warranty



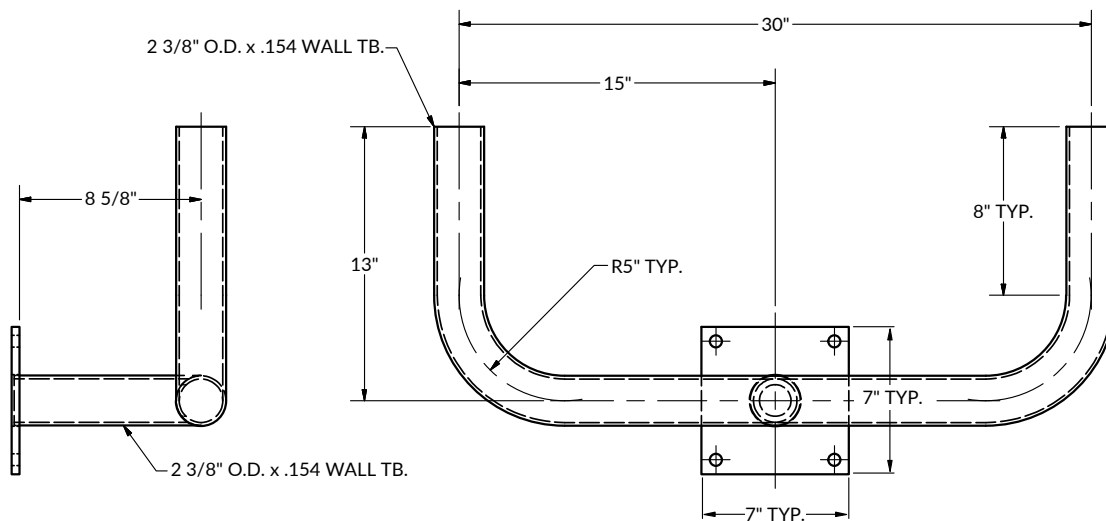
COMPATIBLE WITH

- AL
- CFS
- CFM
- SAS
- SAM
- VFM
- VFL
- VFX
- VAS
- VAM

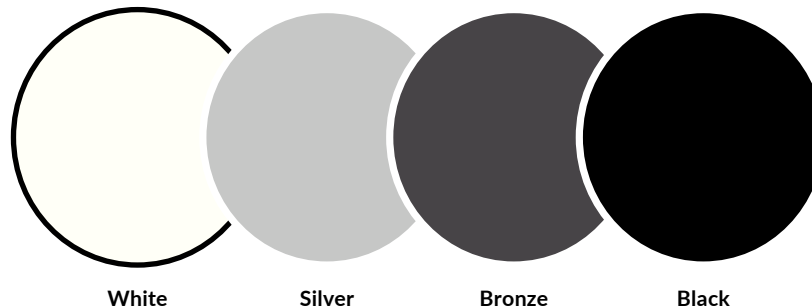
ORDERING GUIDE:

SERIES	FINISH
DRAB	BRZ Bronze
	BLK Black
	SLV Silver
	WHT White

LINE DRAWINGS



FACTORY SELECT COLOR GUIDE



COLORS SHOWN ABOVE ARE TO BE USED AS REFERENCE, NOT EXACT MATCH.
PLEASE REQUEST PAINT CHIPS FOR EXACT MATCH.