



# QWIKLINK Linear Strip



# QWIKLINK Linear Strip

## Sleek, Slender & the Most Versatile

strip luminaire on the market today. QWIKLINK's standard field selectable Lumen and CCT features provide complete flexibility at your fingertips. Utilize its toolless QWIKLINK connector for uninterrupted, continuous row illumination up to 64 linear feet with only one electrical power entry. These features drastically reduce installation time and increase project efficiencies. With these adaptable and robust features, QWIKLINK is the optimal choice for any interior linear environment.

## Suitable Applications

- Education
- Healthcare
- Commercial Office
- Grocery Store
- Storage Facility
- Retail
- Industrial
- Residential
- Stairwell and Passageway



## Features

QWIKLINK Toolless Connection

Injection Molded End Caps

10% Uplight Design

High Efficacy—Up to 130 lm/W

>80 Color Rendering Index (CRI)

2ft & 4ft Lengths

Field Selectable or Factory Set Lumen Output (1,200 to 5,200lm)



Calculated L70 > 100,000 hrs

Field Selectable or Factory Set CCT (3000K-3500K-4000K)



Driver Attributes

- 120-277V Universal Voltage
- 0-10V Dimmable Driver (100%-10%)

Emergency Battery Backup Options

High transmission PMMA Frosted Polycarbonate Lens

## Available Options



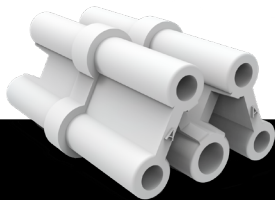
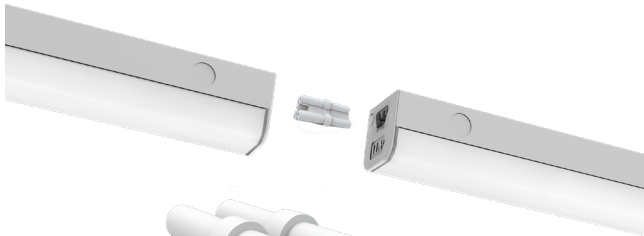
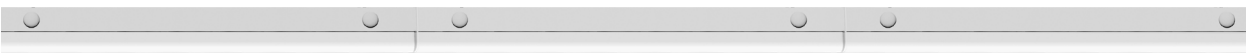
### QWIKLINK CABLE

Available in 7.9" (QL20) & 60" (QL150) lengths allow for angled, corner & distant fixture connections.



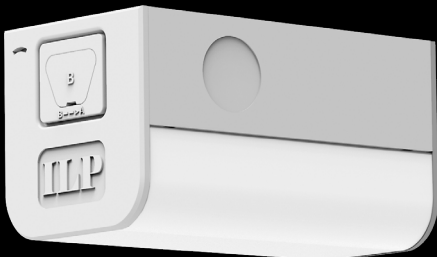
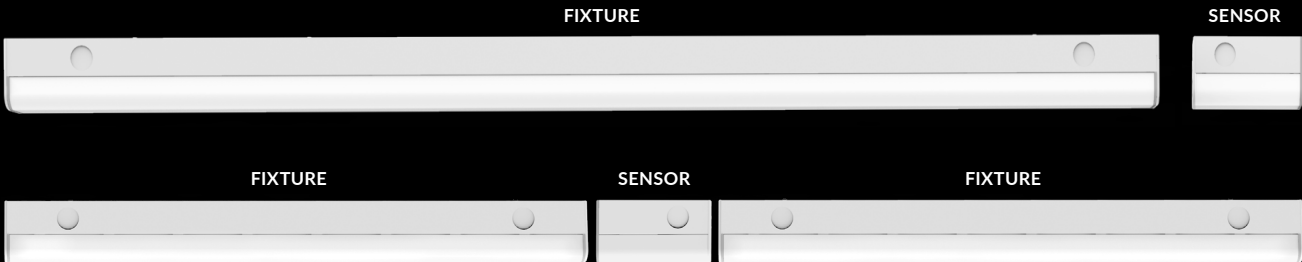
### QWIKLINK CONNECTOR

Allows for toolless and seamless connection up to 64 linear feet per electrical power entry. QWIKLINK connection provides 0-10V dimming connection between fixtures. One QWIKLINK connector included with every fixture.



### QWIKLINK SENSOR

Remote programmed field installed QWIKLINK sensor integrates with single or multiple fixtures for occupancy and photocell controls. Utilizing the included QWIKLINK connector allows the sensor to be installed within seconds with no additional wiring required in the field. The sensor mounts on the end of the fixture and can be placed in any location along a 64ft run to provide optimal motion sensing and energy savings.



# QWIKLINK Linear Strip



407-478-3759  
[WWW.ILP-INC.COM](http://WWW.ILP-INC.COM)

An ILLUMUS Brand