

Project Name:

Part Number:

Type:

TRIPLE LINEAR BULLHORN

S3-S30-2, S3-S30-3, S3-S30-4



407-478-3759
www.ilp-inc.com

FEATURES

- Triple linear luminaire mounting bracket for wood, steel, or concrete poles
- Body is steel tube constructed from A500 Grade B Steel
- Designed to slip fit onto 2-3/8", 2-7/8" and 4" vertical tenons
- Assembled removable cap with mounting hardware provided standard
- EPA: 1.6
- Weight: S3-S30-2 = 31 lbs, S3-S30-3 = 33 lbs, S3-S30-4 = 37 lbs
- Max luminaire weight per arm: 100 lbs
- Coated with a durable polyester powder coat finish to withstand extreme weather changes without cracking or peeling (Consult Factory for custom colors)
- 5-Year warranty



COMPATIBLE WITH

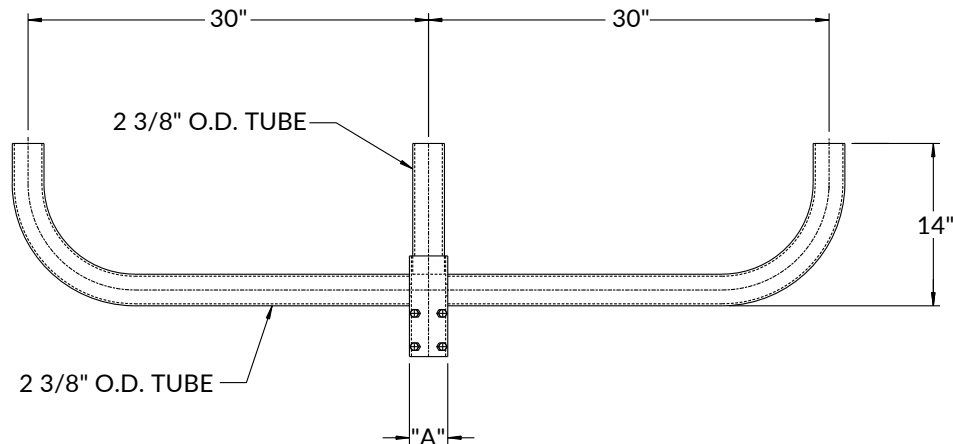
- AL
- CFS
- CFM
- SAS
- SAM
- VFM
- VFL
- VFX
- VAS
- VAM

ORDERING GUIDE:

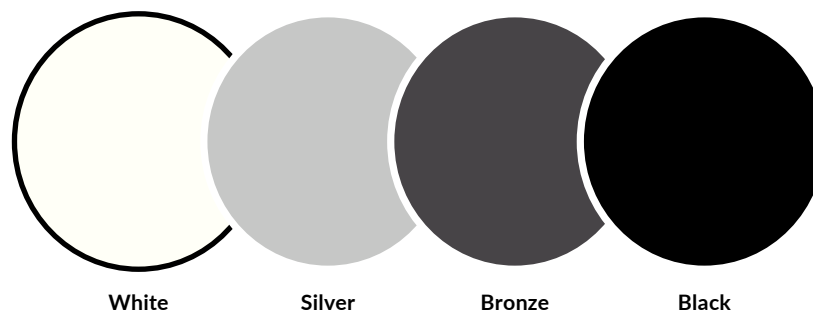
SERIES	SPACING	TENON	FINISH
S3	S30	2 2-3/8"	BRZ Bronze
		3 2-7/8"	BLK Black
		4 4"	SLV Silver
			WHT White

LINE DRAWINGS

PART #	DIMENSION A
S3-S30-2	2.48"
S3-S30-3	3.08"
S3-S30-4	4.25"



FACTORY SELECT COLOR GUIDE



COLORS SHOWN ABOVE ARE TO BE USED AS REFERENCE, NOT EXACT MATCH.
PLEASE REQUEST PAINT CHIPS FOR EXACT MATCH.