



HIMALAYAN HIGH BAY

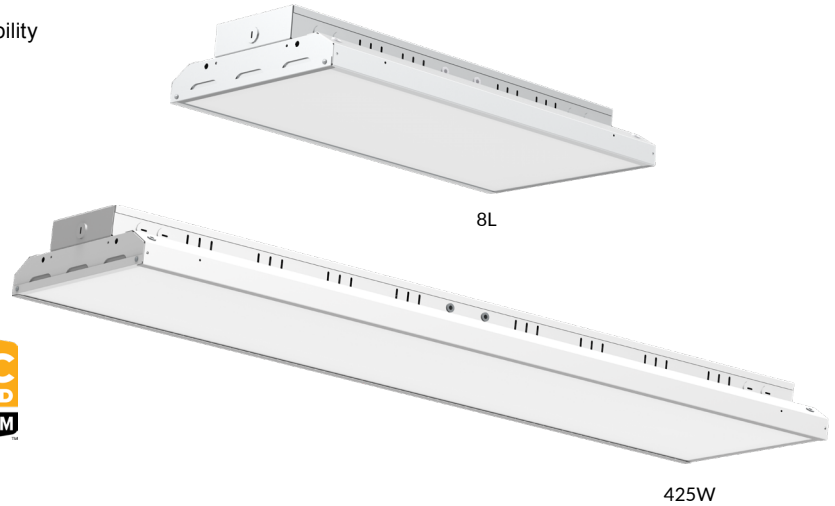
LINEAR HIGH BAY



407-478-3759
www.ilp-inc.com

FEATURES

- Post painted white 22 Ga. steel body for maximum rigidity & durability
- 8,000 - 56,000 Lumen Package Range
- Impact resistant frosted acrylic lens (included)
- V-Clips for dual chain or cable hanging (included)
- 5000K CCT
- >80 Color Rendering Index (CRI)
- Calculated L70 >100,000 Hours
- 0 - 10V Dimmable Driver (100% - 10%)
- 120-277V Universal Driver
- 5 Year Warranty (std); 10 Year Warranty Optional
- UL Listed for Damp Location
- DesignLights Consortium® Premium Qualified Luminaire



SUITABLE APPLICATIONS

- Warehouses
- Distribution Centers
- Gymnasiums
- Manufacturing Plants

ORDERING GUIDE:

MODEL	DESCRIPTION
HHB-8L-U-50-FRL	Himalayan High Bay, 8,000lm, Frosted Lens, 5000K
HHB-425WLED-UNIV-50-FRL	Himalayan High Bay, 56,000lm, Frosted Lens, 5000K

OPTIONS		CONTROLS OPTIONS	
Factory Installed		Basic	
Cx/3W	3-wire cord standard fixtures (xFT = Length; x=6,10,15,20)	FIOS	On/Off Occupancy Sensor
Cx/4W	4-wire cord for EM fixtures (xFT = Length; x=6,10,15,20)		
Cx/5W	5-wire cord for non EM fixtures with external dim control (xFT = Length; x=6,10,15,20)		
Cx/6W	6-wire cord for EM fixtures with external dim control (xFT = Length; x=6,10,15,20)		
QDx/3W	3-wire Quick Connect standard fixtures (xFT = Length; x=6,10,15,20)	FIOSPC	On/Off Occupancy Sensor w/ Photocell
QDx/4W	4-wire Quick Connect for EM fixtures (xFT = Length; x=6,10,15,20)		
QDx/5W	5-wire Quick Connect for non EM fixtures with external dim control (xFT = Length; x=6,10,15,20)		
QDx/6W	4-wire Quick Connect for EM fixtures (xFT = Length; x=6,10,15,20) (xFT = Length; x=6,10,15,20)		
EM5³	5W LED Factory Installed Battery Backup	FIOSPC/DLH	On/Off Occupancy Sensor w/ Daylight Harvesting
EM5/HE³	5W LED Factory Installed Battery Backup - CEC Title 20 Compliant	DHPC	Daylight Harvesting
EM7³	7W LED Factory Installed Battery Backup	USBD	User Bi-Level Dim Sensor w/ Occ. Sensor
EM7/HE³	7W LED Factory Installed Battery Backup - CEC Title 20 Compliant	BDxx	Preset Bi-Level Dim Sensor (xx=%eg,20,30)
EM10³	10W LED Factory Installed Battery Backup	BDxxPC	Preset Bi-level Dim Sensor w/ Photocell
EM10/HE³	10W LED Factory Installed Battery Backup - CEC Title 20 Compliant		
EM10/HE/SD⁹	10W Factory Installed Self-Diagnosing Battery Backup		
EM12³	12W LED Factory Installed Battery Backup		
EM20³	20W LED Factory Installed Battery Backup - CEC Title 20 Compliant		
EM25³	25W LED Factory Installed Battery Backup		
SD480²	480V Step Down Transformer		
SD347²	347V Step Down Transformer		
HT⁴	High Temperature Option		
Ship With Accessories		Advanced	
WC¹	11ga Wire Cage	ESMC/HB⁷	EasySense High Bay Sensor
HUB3/4⁵	Conduit Hub 3/4" for pendant mount		
HOOK⁶	Cast Iron Hook for single point mounting		
ACxY	Adjustable Y-Toggle aircraft cable set (x = 5' or 10')		
SMBKIT	Surface Mount Bracket		
CPMB-WIDE	Center Point Mounting Box		
ESMC/WWS/DR	EasySense Dual Rocker Wireless Wall Switch		

¹ Does not qualify for DLC

² Does not qualify for DLC on 321W & 425W

³ Externally mounted. Cannot be used with CPMB-WIDE, HOOK, SMBKIT or HUB 3/4

⁴ Adds 10°F to standard fixture max ambient. ONLY available for 321W & 425W.

⁵ Must be used with CPMB-WIDE

⁶ Must be used with CPMB-WIDE & Y-Toggle Cable System

⁷ Easily Controlled via Mobile Phone with Bluetooth App

⁸ Operating temp down to 32°F & CEC Title 20 Compliant

⁹ Contact Factory for more details

HIMALAYAN HIGH BAY

LINEAR HIGH BAY



QUICK SHIP ITEMS:

SERIES	LUMENS/WATTAGE	DRIVER	COLOR	PRIMARY LENS
HHB Himalayan High Bay	8L 425W	U 120-277V	50	FRL Frosted Lens (std.)

LED SYSTEMS INFO

FROSTED LENS 50K	LUMENS	WATTS	EFFICACY	DLC	AMBIENT RANGE	REPLACES
HHB-8L-U-50-FRL	8,295 lm	63 W	132 lm/W	PRM	-4°F - 122°F	100W MH, 4T8
HHB-425WLED-UNIV-50-FRL	56,660 lm ¹	421 W	135 lm/W	Unlisted	-4°F - 105°F	1000W MH, 12T5HO

LED System data above based on HHB-8L-U-50-FRL, HHB-12L-U-50-FRL, HHB-18L-U-50-FRL, HHB-24L-U-50-FRL, HHB-34L-U-50-FRL, HHB-321WLED-UNIV-50-FRL & HHB-425WLED-UNIV-50-FRL.

¹ Does not qualify for DLC

SPECIFICATIONS

CONSTRUCTION

Post painted white 22ga. steel body for maximum rigidity and durability. Knockouts positioned on top and side of driver channel for convenient wiring accessibility.

ELECTRICAL

Class 2 LED light engine for high efficacy & long life. Calculated L70 > 100K hours. LED Lumen Maintenance Estimates based on TM-21 projections for the light source at 25°C ambient. Power Factor > 0.90. Standard 120-277 Vac 0-10V dimmable (10%-100%) w/ optional 347-480 Vac step down transformer. Optional emergency battery backups available to meet critical life safety lighting requirements. Fixture reduced max ambient for emergency battery backup & step down options.

MOUNTING

Options include suspension chain, aircraft cables, hook, single pendant (HUB), surface mount (SMBKIT). Reduced maximum ambient range for surface mount.

WARRANTY

5 Year Warranty Standard; 10 Year Warranty Optional ([Terms and Conditions apply](#)).

OPTICS

Standard with impact resistant frosted acrylic lens (FRL) for added LED glare reduction. Optional clear polycarbonate lens (PCL) available.

THERMAL

Ambient temperature range -4°F to 122°F for 8L configurations. -4°F to 115°F for 321W configuration. -4°F to 105°F for 425W configuration. High Temperature (HT) option available for 425W to increase maximum ambient temperature by 10°F.

CONTROLS

Factory installed Advanced & Basic integral occupancy sensor options available. All sensors are end fixture mounted through knockout. Inquire with manufacturer for additional controls options, including customer supplied items.

CERTIFICATIONS

UL Listed to US and Canadian safety standards. Suitable for damp locations. Please refer to the DLC (DesignLights Consortium) Qualified Products List at www.designlights.org/QPL to confirm specific product qualifications.

HIMALAYAN HIGH BAY

LINEAR HIGH BAY

CONTROLS OPTIONS

BASIC

FIOS

Standard on/off motion sensor. Comes with 360 degree high bay lens, 360 degree low bay lens & aisle lens. 360 degree high bay lens factory installed, unless notified otherwise.

FIOSPC

Motion sensor w/ the addition of photocell control. When installed, fixture will not activate unless 1. motion is detected and 2. light levels are below the preset level. When activated, fixture will turn on to 100% light output & will only shut off when one of the two levels mentioned above are met. If no motion is detected & light levels fall below preset level the fixture remains off.

FIOSPC/DLH

Factory installed motion sensor with the addition of photocell control that will allow for daylight harvesting. When installed, fixture will not activate unless 1. motion is detected & 2. light levels are below the preset level. When activated, fixture will turn on only enough to meet the preset light levels and will adjust as the amount of light in the space adjusts between 100%-10%. If light levels are adequate the fixture will remain off.

DHPC

Daylight Harvesting off photocell. Fixtures will continually dim up/down throughout the day based on light level readings taken from the photocell control.

USBD

User Selectable Bi-Level Dimming. Allows the end user to manually select the unoccupied dimming level. Once motion is detected, the fixture will return to 100% light output.

BDxx

Factory set Bi-Level Dimming. Sensor is set to dim level, as indicated in the "xx" portion of the part number, when the area is unoccupied. Example: BD20 sets the fixture to dim down to 20% lumen output when the area is unoccupied. Once motion is detected, the fixture will return to 100% light output.

BDxxPC

Factory set Bi-Level Dimming with motion and photocell. Sensor is set to dim level, as indicated in the "xx" portion of the part number, when the area is unoccupied and will not return to 100% light output unless 1. motion is detected and 2. the light level is below the preset level. Example: BD20PC sets the fixture to dim down to 20% lumen output when the area is unoccupied and will not return to 100% light output unless the above conditions are met for both motion and light level readings.

ADVANCED

Philips ESMC/HB

EasySense sensor combines occupancy sensing, daylight harvesting and institutional tuning in one compact solution. This is an ideal control for any high bay application. Each device allows you to turn on/off occupancy and/or daylight harvesting functions as well as set the full light output, background light level, occupancy prolong time, occupancy grace fading time & occupancy time out/hold time. Easily Controlled via Mobile Phone with Philips MasterConnect Bluetooth App. (Sold separately)

OPTIONS



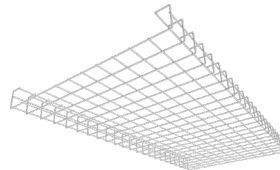
Cx/yW

Cords - (x = 6, 10, 15, 20 (ft)) (y = conductors; 3, 4, 5, 6)



QDx/yW

Quick Disconnect - (x = 6, 10, 15, 20 (ft)) (y = conductors; 3, 4, 5, 6)



WC

11 GA Wire Cage



HUB 3/4

Conduit Hub 3/4" for Pendant Mounting



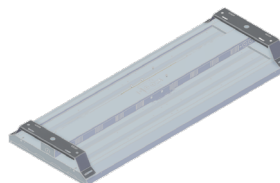
HOOK

Cast Iron Hook for Single Point Mounting



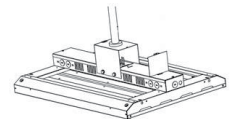
ACxY

Includes 2 adjustable cable hangers. Available in 5' or 10'



SMBKIT

Surface Mount Bracket Kit provides a 2" space above the fixture



CPMB-WIDE

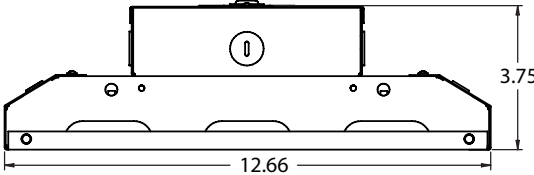
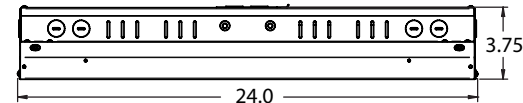
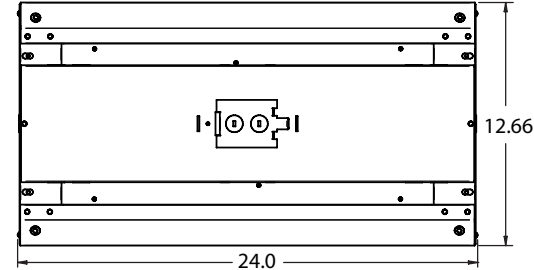
Center Point Mounting Box for Single Point Mounting (must be used with HUB or HOOK)

HIMALAYAN HIGH BAY

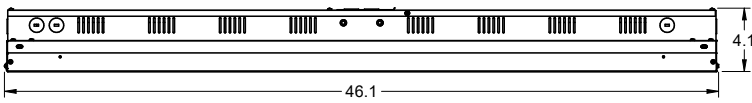
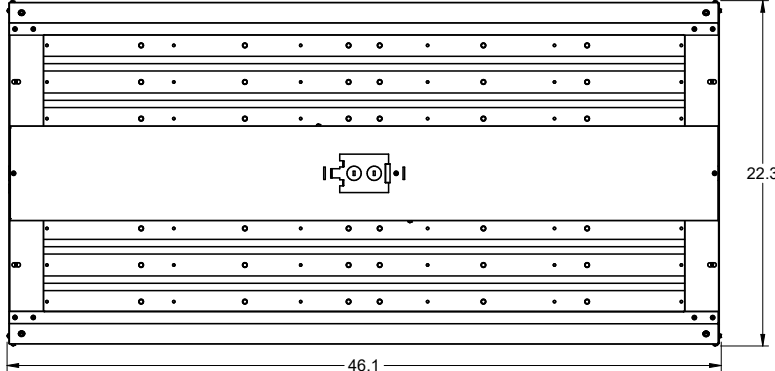
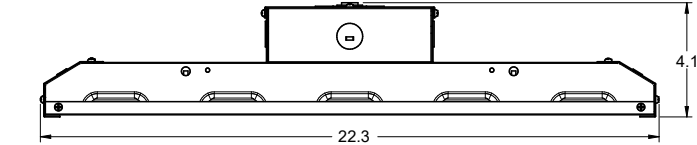
LINEAR HIGH BAY

LINE DRAWINGS

8L



425W



HIMALAYAN HIGH BAY

LINEAR HIGH BAY

PHOTOMETRIC DATA

LUMINAIRE DATA	
Part Number	HHB-8L-U-50-FRL
Description	Himalayan High Bay, 8000lm, with frosted acrylic lens
Fixture Lumens (lm)	8,201 lm
Wattage (W)	63 W
Efficacy (lm/W)	131 lm/W
Mounting	Suspended or Surface
Spacing Criteria	0° = 1.24, 90° = 1.24

ZONAL LUMEN SUMMARY		
Zone	Lumens (lm)	% Fixture
0° - 40°	3,966	48%
0° - 60°	6,739	82%
0° - 90°	8,162	100%
90° - 180°	39	1%
0° - 180°	8,201	100%

