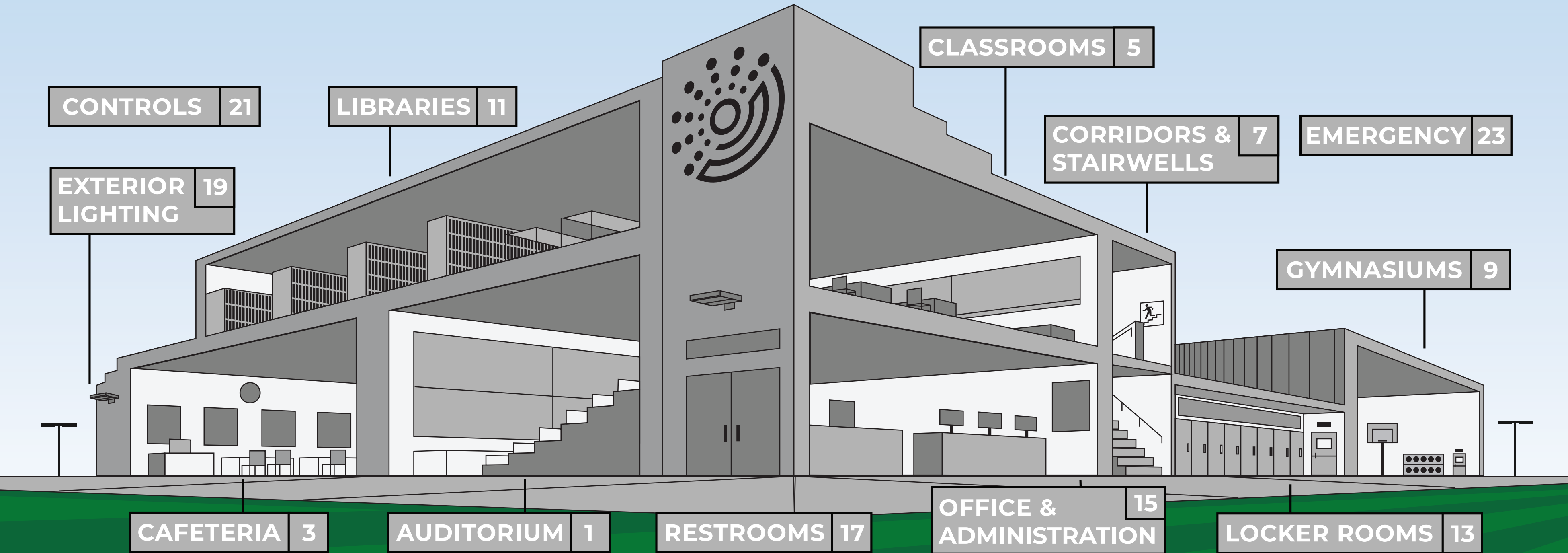




EDUCATION APPLICATION BROCHURE







AUDITORIUM

Lighting in auditoriums should highlight a performance or lecture and make audiences feel comfortable and engaged. Choosing the right beam angles and lenses minimizes glare on screens and boards, and will ensure that the light illuminates, but does not irritate, those presenting.



GRID FRAME HIGH BAY (GH)



The recessed Grid Frame High Bay LED luminaire is constructed of a 2'x2' or 2'x4' square aluminum housing with optional frosted diffuse lenses to maximize visual comfort and deliver unparalleled performance. The GH's high lumen packages allow for savings from a reduced fixture count compared with similar alternative lighting products such as high lumen can lighting, while also enhancing application environments. With lumen packages from 13-27k lumens, intended applications are for high ceiling areas 15-35'.



VOLUMETRIC TROFFER (VOLA)

- Architecturally designed volumetric troffer
- High efficacy - up to 151 lm/W for enhanced energy savings
- Advanced controls options for asset tracking



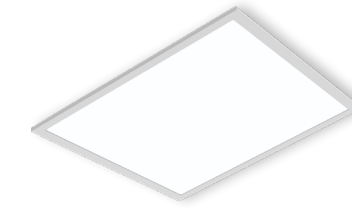
TROFFER KIT (LANCE)

- Architecturally designed volumetric troffer retrofit kit
- High efficacy - up to 151 lm/W for enhanced energy savings
- Advanced controls options for asset tracking



EDGE LIT FLAT PANEL (PAN)

- Slim low profile design with seamless finish
- Extremely long life
- 1x4', 2x2' & 2x4' sizes



BACK LIT FLAT PANEL (VPAN)

- Lumen selectable output
- Low profile design
- 1x4', 2x2' & 2x4' sizes



ENDEAVOUR HIGH BAY (EDV)

- Sleek curved polycarbonate end caps for polished look
- Uplight option to enhance full room illumination
- White & black housing options



ROUND HIGH BAY (RB3)

- Aesthetically pleasing compact round high bay
- Frosted primary lens & diffusers provide soothing optics
- 13,000 to 31,000 lumens

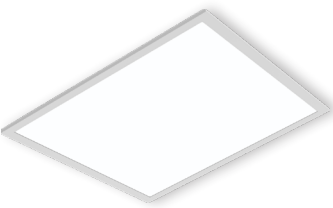


CAFETERIA

Commons areas typically serve multiple functions, so a variety of lighting options is critical. Authentic color rendering in dining areas makes meals or snacks visually appealing and promotes lunchtime's social atmosphere. Lighting around kitchen areas should be brighter, helping to keep food preparation areas clean.



EDGE LIT FLAT PANEL (PAN)



BACK LIT FLAT PANEL (VPAN)

- Lumen selectable output
- Low profile design
- 1x4', 2x2' & 2x4' sizes



VOLUMETRIC TROFFER (VOLA)

- Architecturally designed volumetric troffer
- High efficacy - up to 151 lm/W for enhanced energy savings
- Advanced controls options for asset tracking



TROFFER KIT (LANCE)

- Architecturally designed volumetric troffer retrofit kit
- High efficacy - up to 151 lm/W for enhanced energy savings
- Advanced controls options for asset tracking



ADJUSTABLE TROFFER (VAT)

- Volumetric design
- Lumen & CCT selectable
- 1x4', 2x2' & 2x4' sizes



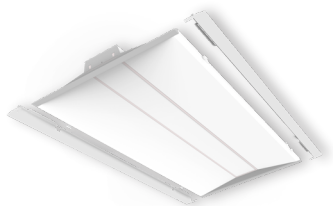
LATCH AND CLOSE (VLN)

- LED Retrofit Kit for recessed lighting applications
- One-piece unit with two universal mounting brackets
- 2x2' & 2x4' sizes



FLAT LENS TROFFER (FLT)

- Architecturally Designed Flat Lensed Volumetric Troffer
- Recessed, Surface or Flange Mount
- 1x4, 2x2, 2x4 sizes



FLAT LENS TROFFER RETROFIT (FLTR)

- Architecturally Designed Flat Lensed Volumetric Troffer
- Recessed, Surface or Flange Mount
- 1x4, 2x2, 2x4 sizes



GRID FRAME HIGH BAY (GH)

- High performance recessed high bay
- Various lens options for aesthetics
- 2x2' & 2x4' sizes



PAN offers a sleek, modern, low profile design with a seamless frame providing a polished appearance. Utilizing an edge-lit technology, PAN gives edge to edge illumination and a soothing appeal. With an exceptional efficacy, long lifetime rating and variety of mounting options, PAN is designed to meet the application requirements.

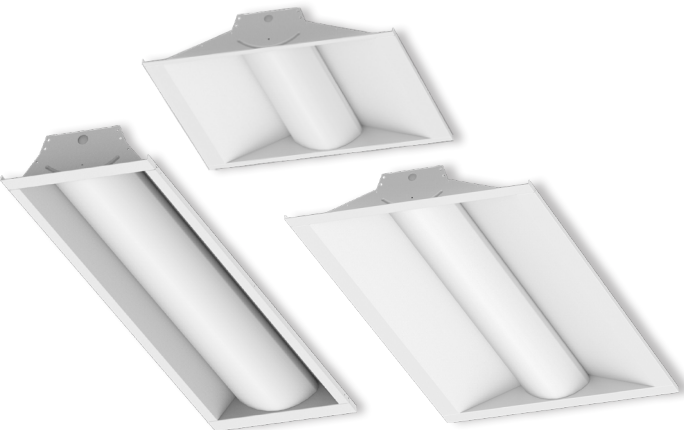


CLASSROOMS

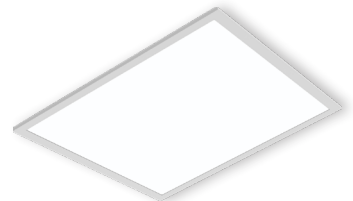
Classrooms are second homes for many students and teachers. As lighting has a significant effect on performance and mood, designers should choose fixtures that increase motivation and reduce fatigue, mimicking or complimenting natural light. Choose soft but bright lights with high color rendering, and avoid fixtures which may buzz or flicker.

ILP

VOLUMETRIC TROFFER (VOLA)



VOLA is a designed for rigidity, durability and ease of installation while providing maximum performance and improved aesthetics. With an exceptionally robust offering of lumen outputs, sizes and options, VOLA is designed for a multitude of applications.



BACK LIT FLAT PANEL (VPAN)

- Lumen selectable output
- Low profile design
- 1x4', 2x2' & 2x4' sizes



EDGE LIT FLAT PANEL (PAN)

- Slim low profile design with seamless finish
- Extremely long life
- 1x4', 2x2' & 2x4' sizes



TROFFER KIT (LANCE)

- Architecturally designed volumetric troffer retrofit kit
- High efficacy - up to 151 lm/W for enhanced energy savings
- Advanced controls options for asset tracking



ADJUSTABLE TROFFER (VAT)

- Volumetric design
- Lumen & CCT selectable
- 1x4', 2x2' & 2x4' sizes



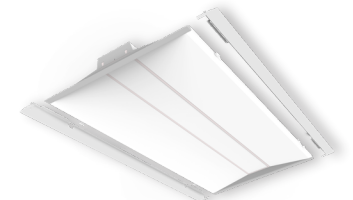
LATCH AND CLOSE (VLN)

- LED Retrofit Kit for recessed lighting applications
- One-piece unit with two universal mounting brackets
- 2x2' & 2x4' sizes



FLAT LENS TROFFER (FLT)

- Architecturally Designed Flat Lensed Volumetric Troffer
- Recessed, Surface or Flange Mount
- 1x4, 2x2, 2x4 sizes



FLAT LENS TROFFER RETROFIT (FLTR)

- Architecturally Designed Flat Lensed Volumetric Troffer
- Recessed, Surface or Flange Mount
- 1x4, 2x2, 2x4 sizes



GRID FRAME HIGH BAY (GH)

- High performance recessed high bay
- Various lens options for aesthetics
- 2x2' & 2x4' sizes

CORRIDORS & STAIRWELLS

Hallways and Stairwells are transition areas-important spaces where students and faculty can decompress, socialize, and re-calibrate. Unfortunately, they are often far from windows and lack natural light. Proper lighting in these areas helps to shape a school's atmosphere and leaves students feeling energized for their next class.



CAVERN STAIRWELL (CV)



ILP's Cavern Stairwell luminaire provides a safe, robust and attractive design ideal for wall or ceiling mounting. As stairwells are unoccupied 90% throughout the day, fully control light levels for both occupied and unoccupied areas with high/low user selectable bi-level dimming options for maximum energy savings. Cavern's specification design, performance, housing lengths, finishes, sensor and emergency options make it the proper choice for stairwell illumination.



VOLUMETRIC TROFFER (VOLA)

- Architecturally designed volumetric troffer
- High efficacy - up to 151 lm/W for enhanced energy savings
- Advanced controls options for asset tracking



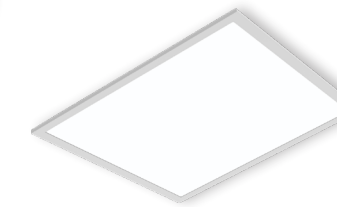
TROFFER KIT (LANCE)

- Architecturally designed volumetric troffer retrofit kit
- High efficacy - up to 151 lm/W for enhanced energy savings
- Advanced controls options for asset tracking



ADJUSTABLE TROFFER (VAT)

- Volumetric design
- Lumen & CCT selectable
- 1x4', 2x2' & 2x4' sizes



BACK LIT FLAT PANEL (VPAN)

- Lumen selectable output
- Low profile design
- 1x4', 2x2' & 2x4' sizes



EDGE LIT FLAT PANEL (PAN)

- Slim low profile design with seamless finish
- Extremely long life
- 1x4', 2x2' & 2x4' sizes



CURVED WRAP (SQ)

- Sleek curved profile wrap fixture
- Suitable for installing in continuous runs
- 2', 4' & 8' lengths



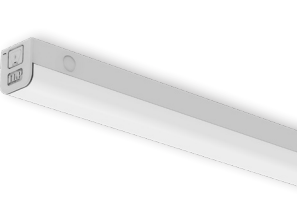
LOW PROFILE STRIP (FZ)

- 2ft, 4ft & 8ft options
- Multiple dimming & sensor options to fully control occupied & unoccupied light levels
- Single or dual pendant, surface mount and cable hanging options



SLIM STRIP (SS)

- Ultra slim architectural design strip fixture
- Pendant, ceiling and continuous row mounting
- 4' & 8' lengths



QWIKLINK STRIP (QL)

- Sleek, Versatile, Spec Grade Linear Solution
- Field Selectable Lumens & CCT
- QWIKLINK connection up to 64 linear feet per power entry



GYMNASIUMS

Gyms are not only used for sports—they can double as event centers, pep rally venues, and dance halls. Getting the lighting right is not easy. Solutions in these spaces need to distribute light evenly across the floor and should be robust enough to withstand the impact of fly balls. Replacing these fixtures is costly and time-consuming, so designers should choose long-lasting, energy-efficient solutions.

ILP

ENDEAVOUR HIGH BAY (EDV)

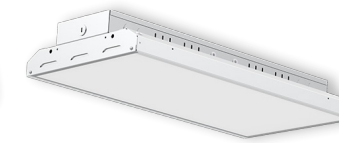


Endeavour is the most versatile and robust American Manufactured High Bay fixture on the market today. Endeavour is built to withstand various recreational activities with an IK10 impact rating; highest impact rating. Endeavour's uplight option provides for enhanced full room illumination.



ROUND HIGH BAY (RB3)

- Aesthetically pleasing compact round high bay
- Frosted primary lens & diffusers provide soothing optics
- 13,000 to 31,000 lumens



HIMALAYAN HIGH BAY (HHB)

- Variable lumen outputs
- Compact size and high performance
- 8,000 to 60,000 lumens



PREMIUM HIGH BAY (PHB)

- Premium Efficiency Delivers Maximum Savings
- Aluminum Body with Steel Channel for Added Rigidity
- Tool-less Hinged Bottom Ballast Access Door



BL SERIES (BL)

- Robust & Durable Wide Body Vapor Tight High Bay
- Surface, Pendant, or Suspended Mounting Options
- 2ft & 4ft Fixture Lengths



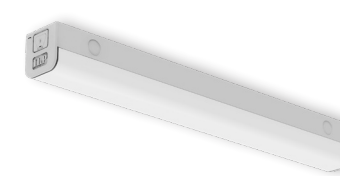
FZ LOW PROFILE STRIP

- 2ft, 4ft & 8ft options
- Multiple dimming & sensor options to fully control occupied & unoccupied light levels
- Single or dual pendant, surface mount and cable hanging options



LOW PROFILE STRIP RETROFIT (RZ)

- Durable steel construction
- Frosted acrylic lens available
- 4ft & 8ft available



QWIKLINK STRIP (QL)

- Sleek, Versatile, Spec Grade Linear Solution
- Field Selectable Lumens & CCT
- QWIKLINK connection up to 64 linear feet per power entry



VS STRIP (VS)

- Architectural design LED Strip fixture
- Steel housing with white powdercoat finish
- 2ft, 4ft & 8ft lengths available



CURVED WRAP (SQ)

- Sleek curved profile wrap fixture
- Suitable for installing in continuous runs
- 2', 4' & 8' lengths



LIBRARIES

The quietest place in school can be a haven in times of stress. Make sure lighting in study areas is adequate but not overbearing, and that books and other resources are highlighted. As libraries tend to be multi-purpose areas, the lighting design should be adaptive to meet the needs of the occupants.



CURVED WRAP (SQ)



The SQ wrap's modern sleek curved profile provides smooth uniform illumination with an enhanced feature set. Maximize scalability with its various lengths, lumen range, controls options and mounting options for surface, pendant and continuous row applications.



VOLUMETRIC TROFFER (VOLA)

- Architecturally designed volumetric troffer
- High efficacy - up to 151 lm/W for enhanced energy savings
- Advanced controls options for asset tracking



TROFFER KIT (LANCE)

- Architecturally designed volumetric troffer retrofit kit
- High efficacy - up to 151 lm/W for enhanced energy savings
- Advanced controls options for asset tracking



ADJUSTABLE TROFFER (VAT)

- Volumetric design
- Lumen & CCT selectable
- 1x4', 2x2' & 2x4' sizes



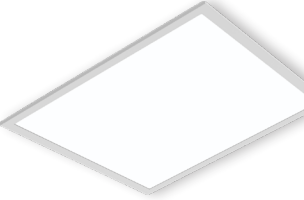
LATCH AND CLOSE (VLN)

- LED Retrofit Kit for recessed lighting applications
- One-piece unit with two universal mounting brackets
- 2x2' & 2x4' sizes



EDGE LIT FLAT PANEL (PAN)

- Slim low profile design with seamless finish
- Extremely long life
- 1x4', 2x2' & 2x4' sizes



BACK LIT FLAT PANEL (VPAN)

- Lumen selectable output
- Low profile design
- 1x4', 2x2' & 2x4' sizes



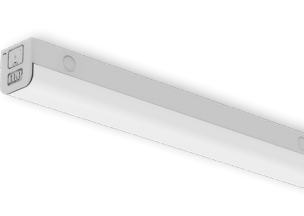
LOW PROFILE STRIP (FZ)

- 2ft, 4ft & 8ft options
- Multiple dimming & sensor options to fully control occupied & unoccupied light levels
- Single or dual pendant, surface mount and cable hanging options



LOW PROFILE STRIP RETROFIT (RZ)

- Durable steel construction
- Frosted acrylic lens available
- 4ft & 8ft available



QWIKLINK STRIP (QL)

- Sleek, Versatile, Spec Grade Linear Solution
- Field Selectable Lumens & CCT
- QWIKLINK connection up to 64 linear feet per power entry



LOCKER ROOMS

Shower and changing room facilities often have tricky layouts. Lighting design should eliminate shadows and cut down on glare from mirrors. Occupancy sensors can be a wise choice, as some facilities are only used during certain parts of the day.



LOW PROFILE STRIP (FZ)



The FZ Strip is a versatile and durable construction linear solution providing a modern enhanced appearance with high efficiency performance. Maximize its feature set with various lengths, lumen range, wireless grouping controls and mounting options for surface, suspended and continuous row solutions. Whether for new construction or retrofit applications, the FZ fixture is adaptable to fit your needs.



SLIM STRIP (SS)

- Ultra slim architectural design strip fixture
- Pendant, ceiling and continuous row mounting
- 4' & 8' lengths



VS STRIP (VS)

- Architectural design LED Strip fixture
- Steel housing with white powdercoat finish
- 2ft, 4ft & 8ft lengths available



CURVED WRAP (SQ)

- Sleek curved profile wrap fixture
- Suitable for installing in continuous runs
- 2', 4' & 8' lengths



FLAT LENS TROFFER (FLT)

- Architecturally Designed Flat Lensed Volumetric Troffer
- Recessed, Surface or Flange Mount
- 1x4, 2x2, 2x4 sizes



EDGE LIT FLAT PANEL (PAN)

- Slim low profile design with seamless finish
- Extremely long life
- 1x4', 2x2' & 2x4' sizes



BACK LIT FLAT PANEL (VPAN)

- Lumen selectable output
- Low profile design
- 1x4', 2x2' & 2x4' sizes



AMAZON VAPORTIGHT (WTZ)

- Sealed & gasketed vapor tight
- Durable construction for abusive environments
- 2', 4' & 8' lengths



VVT VAPOR TIGHT (VVT)

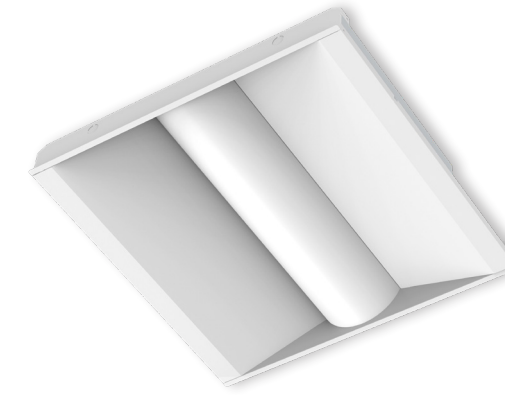
- Enclosed & Gasketed Narrow Body Vapor Tight
- 2ft & 4ft Fixture Lengths
- Lumen Packages Ranging 3,000 to 6,000 Lumens

OFFICE & ADMINISTRATION

Whether doing administrative work, holding meetings, or caring for sick students, faculty and staff need smart lighting solutions to do their jobs. A combination of task lighting and ambient lighting ensures that workspaces are functional and sensible. And since these areas are often overlooked when designing a school, a modern upgrade can make a big difference.



ADJUSTABLE TROFFER (VAT)



The VAT by ILP is a feature rich quick ship Volumetric Troffer at an affordable price. Field Selectable or Factory Set Lumen and CCT features provide flexibility when needed most. Pair the fixture with one of the various controls options for maximum energy savings and high end grouping features all while still maintaining the CCT selectable function for complete field optimization. These features combined with various sizes, mounting options, energy saving high efficiency and extremely long lifetime make the VAT the ideal solution for any troffer application.



VOLUMETRIC TROFFER (VOLA)

- Architecturally designed volumetric troffer
- High efficacy - up to 151 lm/W for enhanced energy savings
- Advanced controls options for asset tracking



TROFFER KIT (LANCE)

- Architecturally designed volumetric troffer retrofit kit
- High efficacy - up to 151 lm/W for enhanced energy savings
- Advanced controls options for asset tracking



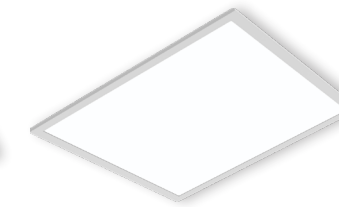
LATCH AND CLOSE (VLN)

- LED Retrofit Kit for recessed lighting applications
- One-piece unit with two universal mounting brackets
- 2x2' & 2x4' sizes



EDGE LIT FLAT PANEL (PAN)

- Slim low profile design with seamless finish
- Extremely long life
- 1x4', 2x2' & 2x4' sizes



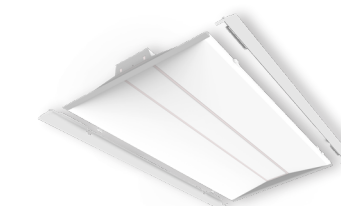
BACK LIT FLAT PANEL (VPAN)

- Lumen selectable output
- Low profile design
- 1x4', 2x2' & 2x4' sizes



FLAT LENS TROFFER (FLT)

- Architecturally Designed Flat Lensed Volumetric Troffer
- Recessed, Surface or Flange Mount
- 1x4, 2x2, 2x4 sizes



FLAT LENS TROFFER RETROFIT (FLTR)

- Architecturally Designed Flat Lensed Volumetric Troffer
- Recessed, Surface or Flange Mount
- 1x4, 2x2, 2x4 sizes



CURVED WRAP (SQ)

- Sleek curved profile wrap fixture
- Suitable for installing in continuous runs
- 2', 4' & 8' lengths



SLIM STRIP (SS)

- Ultra slim architectural design strip fixture
- Pendant, ceiling and continuous row mounting
- 4' & 8' lengths

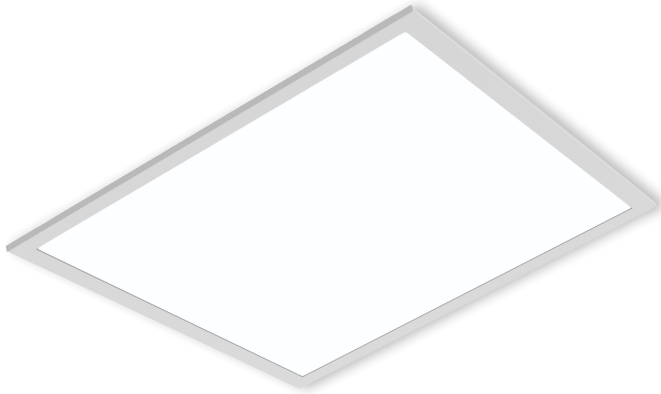


RESTROOMS

Whether you choose ambient light, accent light, or a mixture of both, washrooms in schools should be safe and hygienic. Ensure that the room is well-lit, especially in corners and along walls. High-quality occupancy sensors work well in restrooms, helping facilities save on energy bills.



VPAN



VPAN by ILP is a dependable and versatile Back-Lit Panel that provides an affordable option for everyday troffer solutions. Designed with micro-optics that produce smooth and uniform low glare illumination for visual comfort. Its builtin toolless field selectable lumen output technology offers three lumen options providing versatility when needed most. With a depth under 2", VPAN's robust die-formed housing easily installs in shallow plenums with room to spare.



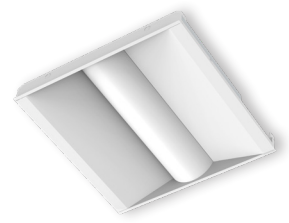
VOLUMETRIC TROFFER (VOLA)

- Architecturally designed volumetric troffer
- High efficacy - up to 151 lm/W for enhanced energy savings
- Advanced controls options for asset tracking



TROFFER KIT (LANCE)

- Architecturally designed volumetric troffer retrofit kit
- High efficacy - up to 151 lm/W for enhanced energy savings
- Advanced controls options for asset tracking



ADJUSTABLE TROFFER (VAT)

- Volumetric design
- Lumen & CCT selectable
- 1x4', 2x2' & 2x4' sizes



LATCH AND CLOSE (VLN)

- LED Retrofit Kit for recessed lighting applications
- One-piece unit with two universal mounting brackets
- 2x2' & 2x4' sizes



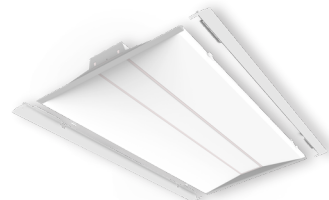
EDGE LIT FLAT PANEL (PAN)

- Slim low profile design with seamless finish
- Extremely long life
- 1x4', 2x2' & 2x4' sizes



FLAT LENS TROFFER (FLT)

- Architecturally Designed Flat Lensed Volumetric Troffer
- Recessed, Surface or Flange Mount
- 1x4, 2x2, 2x4 sizes



FLAT LENS TROFFER RETROFIT (FLTR)

- Architecturally Designed Flat Lensed Volumetric Troffer
- Recessed, Surface or Flange Mount
- 1x4, 2x2, 2x4 sizes



CURVED WRAP (SQ)

- Sleek curved profile wrap fixture
- Suitable for installing in continuous runs
- 2', 4' & 8' lengths



FZ LOW PROFILE STRIP

- 2ft, 4ft & 8ft options
- Multiple dimming & sensor options to fully control occupied & unoccupied light levels
- Single or dual pendant, surface mount and cable hanging options



EXTERIOR LIGHTING

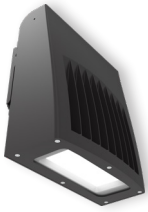
Outdoor lighting in educational facilities includes illumination of entrances, facades, and pathways. Designers should pay attention to IP ratings and choose luminaires which accent the landscaping and architecture.



AREA LIGHT (AL)



The AL Series' sleek aesthetic makes it perfectly-suited for education applications. Designed for both new construction and retrofit, the AL provides a one-for-one solution for replacing legacy metal halide or high pressure sodium luminaires. Priced for payback, it's cost effective die-cast aluminum housings comes in 3-sizes and DLC Premium efficacies, making it the best choice for low acquisition cost and high energy savings. The highly configurable AL series provides superior illumination, reliability, and ease of installation, exceeding most application requirements.



- VALUE SLIM WALL PACK (SWP)**
- Fully adjustable with 5 light levels & 2 sizes
 - CCT color selectable
 - Replace 70W-320W MH



- OPEN FACE WALL PACK (WPO)**
- 3 luminaire scales with up to 15,000 lumens
 - PIR Occupancy, Photocell, & Bi-Level Dimming sensors available
 - Integral Battery Backups available



- FULL CUTOFF WALL PACK (WPC)**
- 2 sizes with multiple optical distributions
 - Legacy aesthetic with next generation performance
 - Sensor & wireless controls ready



- VALUE SQUARE CANOPY (CP)**
- Save up to 85% in energy
 - White or bronze finish
 - Microwave sensor ready



- PARKING GARAGE (UFO)**
- Visually comfortable illumination
 - 10% uplight reduces cave effect
 - Sensor & wireless controls ready



- CONVERTA FLOOD (CF)**
- Site swappable optical patterns
 - Field adjustable light output
 - Daylight harvesting standard



- VALUE FLOOD SERIES (VF)**
- 5 Luminaire scales delivering 2,000-40,000 lumens
 - CCT & Power Selectable (up to 14k lumens)
 - Knuckle, Trunnion, Slip-Fitter, & Pole Mount Options



- BOLLARDS (BxT)**
- 6" flat or dome top bollards
 - Value driven, quick ROI
 - Multiple beam patterns



- POLES & BRACKETS**
- Straight square steel poles up to 40'
 - Multiple bullhorn, wall, and wood pole mounting options
 - Adapters for every site scenario



CONTROLS

The ability to control your light makes all the difference. Quality dimming solutions allow operators to set the mood of a presentation or activity, or to save energy during daytime hours. Smart controls and occupancy sensors can further reduce electricity consumption, resulting in massive savings over the long term. We provide various integrated control solutions that meet building codes compliance for ASHRAE 90:1, Title 24, etc.



CONTROLS SOLUTIONS



- Economical grouping solution
- Occupancy & daylight functions
- Programmable with phone app
- Wireless scalable design
- No gateway required

<https://ilp-inc.com/easy-sense/>



- Three upgradable tier solutions
- Occupancy, daylight, energy manager, & asset tracking capabilities
- Wireless scalable design
- Gateway for enhanced functionality

<https://ilp-inc.com/enlighted/>



- Occupancy & RF solutions
- Occupancy, daylight, & demand response capabilities
- Wireless scalable design
- Vive HUB for enhanced functionality

<https://ilp-inc.com/lutron-vive/>



EDUCATION APPLICATION BROCHURE



www.ilp-inc.com

An ILLUMUS Brand

www.ILLUMUS.com