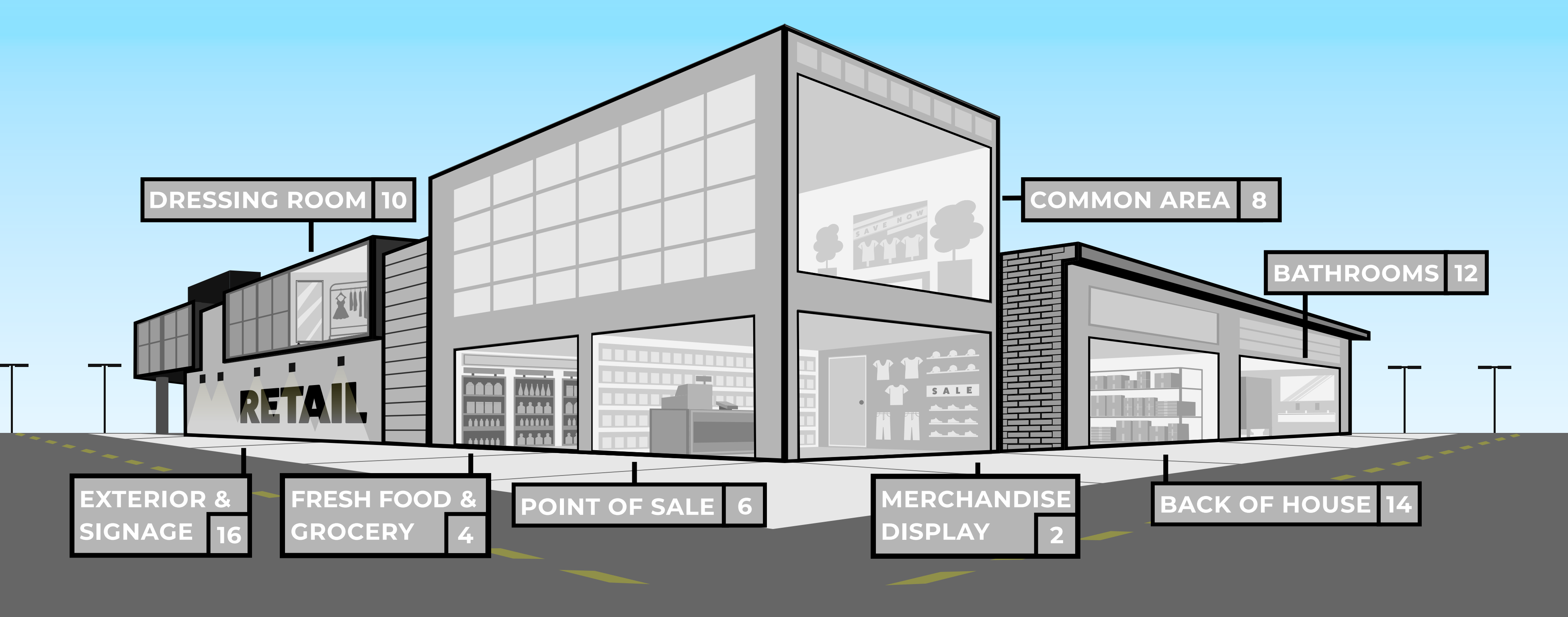




RETAIL APPLICATION BROCHURE





DRESSING ROOM 10

COMMON AREA 8

BATHROOMS 12

RETAIL

EXTERIOR &
SIGNAGE 16

FRESH FOOD &
GROCERY 4

POINT OF SALE 6

MERCHANDISE
DISPLAY 2

BACK OF HOUSE 14



MERCHANDISE DISPLAYS

Smaller, more versatile products with a variety of beam angles are useful for showing off merchandise. Light from a variety of directions can help emphasize product features such as texture, color, and quality.

ATOM TRACK LIGHT



The ATOM track offers industry-leading performance in a versatile, compact, everyday track fixture. The 90 CRI fixtures deliver color accuracy that properly highlights merchandise and signage. The ATOM track heads retrofit the predominate commercial track systems, are made to order in the most common fixture colors, lumen outputs and beam angles for retail lighting needs and will last twice as long as most PAR lamp track fixtures.



REFINE PAR LAMPS

- Powered by TRUE CHROMA technology
- High color fidelity, balanced light distribution, and minimal glare
- Wide offering of CCTs, beam angles, and wattages



HO PAR LAMPS

- Very high light output
- Suitable to replace 75W/250W halogen and 39W/70W CMH
- Exceptional color rendering CRI 92



PS30 LAMPS

- Replace up to 175W HID lamps
- High lumen A style lamp for low bay and pendant fixtures
- Integral driver suitable for 120-277V



MR LAMPS

- Suitable to replace up to 75W halogen MR lamps
- Exceptional color rendering CRI 92
- Smooth dimming with most electronic low-voltage dimming controls



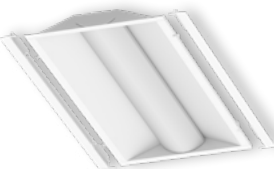
FLAT PANEL

- Slim low profile design with seamless finish
- Extremely long life
- 1x4', 2x2' & 2x4' sizes



VOLUMETRIC TROFFER

- Architecturally designed volumetric troffer
- High efficacy - up to 151 lm/W for enhanced energy savings
- Advanced controls options for asset tracking



TROFFER KIT

- Architecturally designed volumetric troffer retrofit kit
- High efficacy - up to 151 lm/W for enhanced energy savings
- Advanced controls options for asset tracking



FZ LOW PROFILE STRIP

- Highly versatile and efficient strip fixture
- Pendant, ceiling and continuous row mounting
- 2', 4' & 8' lengths



SLIM STRIP

- Ultra slim architectural design strip fixture
- Pendant, ceiling and continuous row mounting
- 4' & 8' lengths



FRESH FOOD & GROCERY

Quality lighting allows you to highlight fresh foods, bringing out their true colors. Food looks more appealing with proper lighting and stays fresh longer.

REFINE PAR LAMPS



REFINE Pars featuring TRUE CHROMA technology deliver the color accuracy critical to replace Ceramic Metal Halide lamps. Available in 277V these long life lamps deliver high intensity light perfect for highlighting grocery, merchandise, and other displays, without compromising efficiency.



HO PAR LAMPS

- Very high light output
- Suitable to replace 75W/250W halogen and 39W/70W CMH
- Exceptional color rendering CRI 92



HID LOW BAY LAMPS

- Replace up to 175W HID lamps
- Suitable for use in totally enclosed fixtures
- Integral driver suitable for 120-277V



20.5W VHO T8

- Integral driver suitable for 120-277V
- Very high light output of 3000 lumens
- Meets NSF requirements (use of a shatter guard required)



SPECFIT

- 4", 6", 8" & 9.5" form factors
- Adjustable lumen output
- TRUE CHROMA version available



ATOM TRACK

- Classic, minimalistic, cylindrical form factor
- CRI 90, 2700K, 3000K, 4000K CCTs
- Up to 1050 lumens in 25° or 35° beam angles



SLIM STRIP

- Ultra slim architectural design strip fixture
- Pendant, ceiling and continuous row mounting
- 4' & 8' lengths



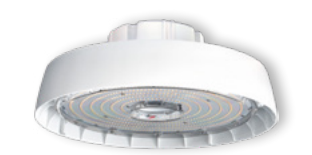
ENDEAVOUR HIGH BAY

- Sleek curved polycarbonate end caps for polished look
- Uplight option to enhance full room illumination
- White & black housing options



GRID FRAME HIGH BAY

- High performance recessed high bay
- Various lens options for aesthetics
- 2x2' & 2x4' sizes



RB3 HIGH BAY

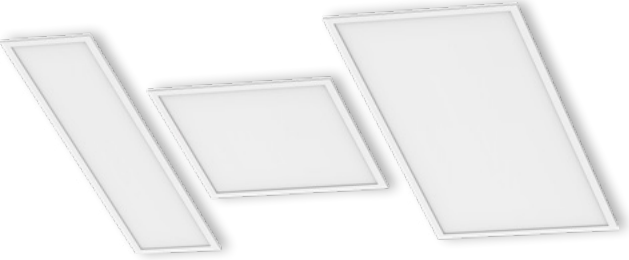
- Aesthetically pleasing compact round high bay
- Frosted primary lens & diffusers provide smoothing optics
- 13,000 to 31,000 lumens



POINT OF SALE

Whether using overhead lighting, task lighting, or a combination, choose luminaires that create reassurance and are conducive to completing transactions.

EDGE LIT FLAT PANEL



PAN offers a sleek, modern, low profile design with a seamless frame providing a polished appearance. Utilizing an edge-lit technology, PAN gives edge to edge illumination and a soothing appeal. With an exceptional efficacy, long lifetime rating and variety of mounting options, PAN is designed to meet the application requirements.



REFINE PAR LAMPS

- Powered by TRUE CHROMA technology
- High color fidelity, balanced light distribution, and minimal glare
- Wide offering of CCTs, beam angles, and wattages



T8 LAMPS

- Options for plug and play ballast install, line voltage wiring, or external driver, are available
- Options for replacing most linear fluorescent lamps
- Wide light emitting area



SPECFIT

- 4", 6", 8" & 9.5" form factors
- Adjustable lumen output
- TRUE CHROMA version available



SELECTFIT

- 4", 6", 8" & 9.5" form factors
- Adjustable lumen output & CCTs
- 120V or 0-10V dimmable



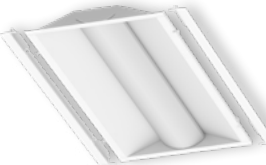
ATOM TRACK

- Classic, minimalistic, cylindrical form factor
- CRI 90, 2700K, 3000K, 4000K CCTs
- Up to 1050 lumens in 25° or 35° beam angles



VOLUMETRIC TROFFER

- Architecturally designed volumetric troffer
- High efficacy - up to 151 lm/W for enhanced energy savings
- Advanced controls options for asset tracking



TROFFER KIT

- Architecturally designed volumetric troffer retrofit kit
- High efficacy - up to 151 lm/W for enhanced energy savings
- Advanced controls options for asset tracking



FZ LOW PROFILE STRIP

- Highly versatile and efficient strip fixture
- Pendant, ceiling and continuous row mounting
- 2', 4' & 8' lengths



SLIM STRIP

- Ultra slim architectural design strip fixture
- Pendant, ceiling and continuous row mounting
- 4' & 8' lengths

COMMON AREAS

Good lighting in these areas should create a feeling of belonging and security. Lighting can also be used to highlight paths and manage the flow of traffic.

SPECFIT



Select Drive



SPECFIT downlight fixtures are a flexible, customizable solution for a variety of retail locations. From large spaces with high open ceilings to narrow hallways with a suspended grid ceiling, the SpecFit can easily provide the right combination of optical performance, energy savings, and advanced lighting control integration needed for retail spaces.



REFINE PAR LAMPS

- Powered by TRUE CHROMA technology
- High color fidelity, balanced light distribution, and minimal glare
- Wide offering of CCTs, beam angles, and wattages



BR LAMPS

- Suitable to replace up to 65W incandescent lamps
- Provides comfortable, diffused light
- Dimmable with forward and reverse phase controls



PL LAMPS

- Replacements for fluorescent lamps from 7W - 42W
- Bases compatible with most fluorescent pin sockets
- Options for plug and play ballast install or wiring to line voltage



T8 LAMPS

- Options for plug and play ballast install, line voltage wiring, or external driver, are available
- Options for replacing most linear fluorescent lamps
- Wide light emitting area



SELECTFIT

- 4", 6", 8" & 9.5" form factors
- Adjustable lumen output & CCTs
- 120V or 0-10V dimmable



INNOFIT

- 4", 6", 8" & 9.5" form factors
- Adjustable lumen output
- Wet, IC, and Air-tight rated



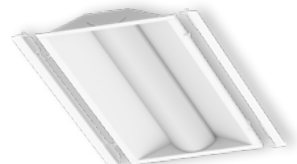
FLAT PANEL

- Slim low profile design with seamless finish
- Extremely long life
- 1x4', 2x2' & 2x4' sizes



VOLUMETRIC TROFFER

- Architecturally designed volumetric troffer
- High efficacy - up to 151 lm/W for enhanced energy savings
- Advanced controls options for asset tracking



TROFFER KIT

- Architecturally designed volumetric troffer retrofit kit
- High efficacy - up to 151 lm/W for enhanced energy savings
- Advanced controls options for asset tracking



DRESSING ROOMS

Whether using ambient lighting, spotlighting, or both, the proper illumination of products and outfits is key for businesses. Adequate light output, suitable color temperature, and accurate color rendering ensure that merchandise is displayed realistically and that customers feel at home.

CLICK WITH SENSOR



The integral passive infrared sensor of the CLICK surface mount fixture helps deliver a balance between high quality 90 CRI light and energy savings in variable occupancy spaces. Turning on instantly with room occupancy and off after ten minutes of room vacancy, the CLICK provides easy and reliable fixture control and performance.



REFINE PAR LAMPS

- Powered by TRUE CHROMA technology
- High color fidelity, balanced light distribution, and minimal glare
- Wide offering of CCTs, beam angles, and wattages



SPECFIT

- 4", 6", 8" & 9.5" form factors
- Adjustable lumen output
- TRUE CHROMA version available



SELECTFIT

- 4", 6", 8" & 9.5" form factors
- Adjustable lumen output & CCTs
- 120V or 0-10V dimmable



MINIFIT

- 1" & 2" 360° rotation gimbals
- 2" module with extensive trim selections
- Perfect for shallow plenum construction



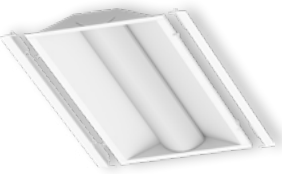
FLAT PANEL

- Slim low profile design with seamless finish
- Extremely long life
- 1x4', 2x2' & 2x4' sizes



VOLUMETRIC TROFFER

- Architecturally designed volumetric troffer
- High efficacy - up to 151 lm/W for enhanced energy savings
- Advanced controls options for asset tracking



TROFFER KIT

- Architecturally designed volumetric troffer retrofit kit
- High efficacy - up to 151 lm/W for enhanced energy savings
- Advanced controls options for asset tracking



FZ LOW PROFILE STRIP

- Highly versatile and efficient strip fixture
- Pendant, ceiling and continuous row mounting
- 2', 4' & 8' lengths



SLIM STRIP

- Ultra slim architectural design strip fixture
- Pendant, ceiling and continuous row mounting
- 4' & 8' lengths



RESTROOMS

Lighting in restrooms areas should be both practical and comfortable. Besides energy saving and easy maintenance, it is equally important to choose lighting that provide pleasant and refreshing feelings.

VOLUMETRIC TROFFER



VOLA is a designed for rigidity, durability and ease of installation while providing maximum performance and improved aesthetics. With an exceptionally robust offering of lumen outputs, sizes and options, VOLA is designed for a multitude of applications.



A LAMPS

- Suitable to replace 60W, 75W, 100W incandescent lamps
- Provides comfortable, diffused light
- Dimmable with forward and reverse phase controls



G25 LAMP

- Suitable to replace a 40W incandescent G25 lamp
- Smooth dimming with existing dimmers
- Frosted glass diffuser delivers soft and even light distribution



PL LAMPS

- Replacements for fluorescent lamps from 7W - 42W
- Bases compatible with most fluorescent pin sockets
- Options for plug and play ballast install or wiring to line voltage



T8 LAMPS

- Options for plug and play ballast install, line voltage wiring, or external driver, are available
- Options for replacing most linear fluorescent lamps
- Wide light emitting area



CLICK WITH SENSOR

- Integrated PIR sensor
- Wet, IC & Air-tight rated
- Nonconductive polycarbonate trim



FLAT PANEL

- Slim low profile design with seamless finish
- Extremely long life
- 1x4', 2x2' & 2x4' sizes



TROFFER KIT

- Architecturally designed volumetric troffer retrofit kit
- High efficacy - up to 151 lm/W for enhanced energy savings
- Advanced controls options for asset tracking



FZ LOW PROFILE STRIP

- Highly versatile and efficient strip fixture
- Pendant, ceiling and continuous row mounting
- 2', 4' & 8' lengths



SLIM STRIP

- Ultra slim architectural design strip fixture
- Pendant, ceiling and continuous row mounting
- 4' & 8' lengths



BACK OF HOUSE

Storage areas, hallways, and stairwells need reliable lighting solutions. These areas are often used for building maintenance and equipment storage, so lighting should be adequately bright while ensuring safety. Use durable, long-lasting products. Motion sensor lighting can be particularly effective, as these areas are frequently unoccupied.

SLIM STRIP



The SS slim strip provides a modern and architectural design that can be ceiling, wall and suspension mounted. With a sleek ultra slim 2.36" width, multiple lengths, and low acquisition cost, the SS slim strip provides versatility and energy savings desired for new construction and retrofit applications.



T8 LAMPS

- Options for plug and play ballast install, line voltage wiring, or external driver, are available
- Options for replacing most linear fluorescent lamps
- Wide light emitting area



PL LAMPS

- Replacements for fluorescent lamps from 7W - 42W
- Bases compatible with most fluorescent pin sockets
- Options for plug and play ballast install or wiring to line voltage



INNOFIT

- 4", 6", 8" & 9.5" form factors
- Adjustable lumen output
- Wet, IC, and Air-tight rated



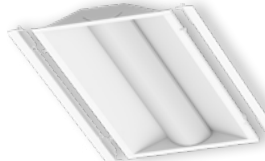
FLAT PANEL

- Slim low profile design with seamless finish
- Extremely long life
- 1x4', 2x2' & 2x4' sizes



VOLUMETRIC TROFFER

- Architecturally designed volumetric troffer
- High efficacy - up to 151 lm/W for enhanced energy savings
- Advanced controls options for asset tracking



TROFFER KIT

- Architecturally designed volumetric troffer retrofit kit
- High efficacy - up to 151 lm/W for enhanced energy savings
- Advanced controls options for asset tracking



FZ LOW PROFILE STRIP

- Highly versatile and efficient strip fixture
- Pendant, ceiling and continuous row mounting
- 2', 4' & 8' lengths



ENDEAVOUR HIGH BAY

- Sleek curved polycarbonate end caps for polished look
- Uplight option to enhance full room illumination
- White & black housing options



RB3 HIGH BAY

- Aesthetically pleasing compact round high bay
- Frosted primary lens & diffusers provide smoothing optics
- 13,000 to 31,000 lumens



EXTERIOR & SIGNAGE

Good exterior and sign lighting allows you to attract the right type of attention. Passersby make split-second decisions on whether to enter an establishment based on the feel of the exterior. Much consideration needs to be paid to the outdoor environment, and designers should choose luminaires that light the space efficiently.

AREA LIGHT



The AL Series' sleek aesthetic makes it perfectly-suited for commercial retail applications. Designed for both new construction and retrofit, the AL provides a one-for-one solution for replacing legacy metal halide or high pressure sodium luminaires. Priced for payback, it's cost effective die-cast aluminum housings comes in 3-sizes and DLC Premium efficacies, making it the best choice for low acquisition cost and high energy savings. The highly configurable AL series provides superior illumination, reliability, and ease of installation, exceeding most application requirements.



- HID RETROFIT LAMPS**
- Post top, Highbay, Lowbay, and Wall pack series
 - Suitable for use in totally enclosed fixtures
 - Integral driver suitable for 120-277V



- CONVERTA FLOOD**
- Site swappable optical patterns
 - Field adjustable light output
 - Daylight harvesting standard



- BOLLARDS**
- 6" flat or dome top bollards
 - Value driven, quick ROI
 - Multiple beam patterns



- FLOODS 2.0**
- 4 luminaire scales with multiple mounting configurations
 - Replace up to 400W MH
 - Save up to 70% in energy



- FULL CUTOFF WALL PACK**
- 2 sizes with multiple optical distributions
 - Legacy aesthetic with next generation performance
 - Sensor & wireless controls ready



- PARKING GARAGE - UFO**
- Visually comfortable illumination
 - 10% uplight reduces cave effect
 - Sensor & wireless controls ready



- POLES & BRACKETS**
- Straight square steel poles up to 40'
 - Multiple bullhorn, wall, and wood pole mounting options
 - Adapters for every site scenario



- VALUE SLIM WALL PACK**
- Fully adjustable with 5 light levels & 2 sizes
 - CCT color selectable
 - Replace 70W-320W MH



- VALUE SQUARE CANOPY**
- Save up to 85% in energy
 - Quickly meet financial payback thresholds
 - Microwave sensor ready

RETAIL LIGHTING



GREENCREATIVE

www.greencreative.com



www.ilp-inc.com

An ILLUMUS Brand

www.ILLUMUS.com