



**Start Realizing
- the -
Value Today!**



Value Select provides consumers with select products in select variations that deliver great value through performance, look, and price, without sacrificing our rigorous quality standards. Start realizing the Value today!

TABLE OF CONTENTS:

Troffers	3 - 4
Troffer Retrofit Kits	5 - 8
Strips	9 - 14
Strip Retrofit Kits	15 - 16
Wet Location	17 - 18
High Bays	19 - 20
Parking/Canopy	21 - 22
Wall Mounts	23 - 26

VOLUMETRIC TROFFER



Overview:
The VOL troffer provides an architectural volumetric design ideal for schools, offices, retail, medical and public spaces. High efficacy to provide enhanced energy savings for retrofit or new construction.

- Applications:**
- Education
 - Offices
 - Multipurpose Rooms
 - Healthcare
 - Hallways
 - Conference Rooms

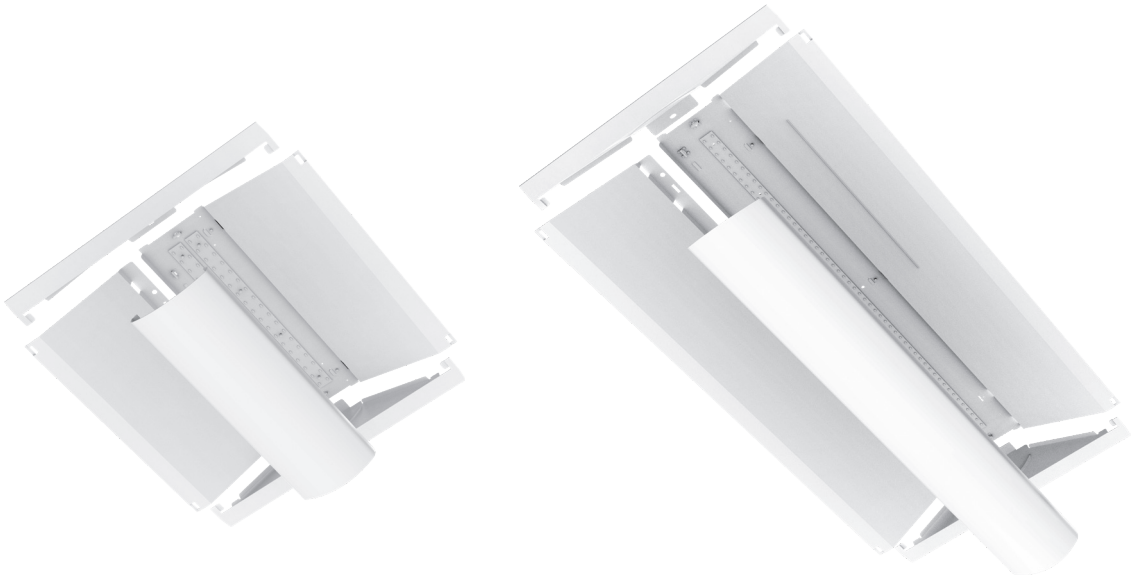
- Features:**
- Architectural design
 - Steel housing
 - White powder coat finish
 - Integrated hurricane clips
 - Frosted acrylic lens easily removes for cleaning
 - TypeIC (suitable for insulation contact)
 - 3500K & 4000K CCT
 - 0-10V Dimmable Driver (100%-5%)
 - 120-277V Universal Voltage
 - >80 Color Range Index (CRI)
 - Calculated L70 >100,000 hours
 - 5 Year Warranty
 - UL Listed
 - DesignLights Consortium® Premium Qualified Luminaire
- Options:**
- Battery Backups
 - Whips
 - Flange Kit



Part Number	Lumens	Watts	Lm/W	Replaces	DLC
VOL22-24WLED-UNIV-40	2,898	23	126	2T8	PREMIUM
VOL22-30WLED-UNIV-40	3,780	30	126	3T8	PREMIUM
VOL24-30WLED-UNIV-40	3,780	30	126	2T8	PREMIUM
VOL24-34WLED-UNIV-40	4,590	34	135	3T8	PREMIUM
VOL24-56WLED-UNIV-40	7,000	56	125	4T8	PREMIUM



BIF TROFFER KIT



Overview:
The BIF Troffer Kit transforms existing parabolic and prismatic troffers into a modern volumetric appearance while providing up to 60% energy savings. Quick and simple installation allows installers to complete projects faster and reduce ROI. Ideal for schools, offices, retail, medical and public spaces.

- Applications:**
- Education
 - Offices
 - Multipurpose Rooms
 - Healthcare
 - Hallways
 - Conference Rooms

- Features:**
- LED Retrofit Kit for recessed troffer applications
 - Five piece design delivers seamless finish
 - Average install time less than five minutes
 - Frosted acrylic lens
 - 2x2 & 2x4 sizes available
 - 4000K CCT
 - >80 Color Rendering Index (CRI)
 - Calculated L70 >100,000 hours
 - 0-10V Dimmable Driver (100%-10%)
 - 5 Year Warranty
 - UL Classified
 - DesignLights Consortium® Premium Qualified Luminaire

- Options:**
- Battery Backups



Part Number	Lumens	Watts	Lm/W	Replaces	DLC
BIF22-25WLED-UNIV-40	3,000	23	130	2T8	PREMIUM
BIF22-30WLED-UNIV-40	3,840	30	128	2T8	PREMIUM
BIF24-30WLED-UNIV-40	3,900	30	130	2T8	PREMIUM
BIF24-37WLED-UNIV-40	4,752	36	132	3T8	PREMIUM



RTR TROFFER KIT



Overview:

Retrofit existing parabolic and prismatic troffers in 2 minutes with the one-piece construction RTR troffer kit. This kit maintains the existing fixture appearance the user is accustomed to while upgrading the light engine. Available in 2x2 and 2x4 sizes, the RTR troffer kit was designed to fit between existing socket bars to reduce waste and installation time. Ideal for schools, offices, retail, medical and public spaces.

Applications:

- Education
- Offices
- Multipurpose Rooms
- Healthcare
- Hallways
- Conference Rooms

Features:

- One-piece construction, 2 minute install
- Designed for Prismatic & Parabolic Troffers
- Fits between the socket bars
- 2x2 & 2x4 sizes available
- High Efficacy – Up to 167 lm/W
- 3500K & 4000K CCT
- 0-10V 120-277V Dimmable Driver
- Frosted lens option to remove shadowing and pixilation
- >80 Color Range Index (CRI)
- Calculated L70 >100,000 hours
- 5 Year Warranty
- ETL Listed
- DesignLights Consortium® Premium Qualified Luminaire

Options:

- Battery Backups
- Sensors
- 347V



Part Number	Lumens	Watts	Lm/W	Replaces	DLC
RTR22040-03	2,428	16	150	2T8	PREMIUM
RTR22540-03	2,739	19	148	2T8	PREMIUM
RTR24040-03	4,392	32	136	3T8	PREMIUM
RTR43040-03	3,420	20	167	2T8	PREMIUM
RTR44040-03	4,066	26	160	2T8	PREMIUM
RTR44540-03	4,844	32	151	3T8	PREMIUM



SLIM STRIP



Overview:

With a sleek ultra slim 2.36" width design, the SS strip provides a modern and architectural design that can be ceiling, wall and suspension mounted. Available 4ft and 8ft lengths allow for continuous and stand alone mounting. Ideal for schools, offices, retail, storage facilities and public spaces.

Applications:

- Retail
- Education
- Distribution Centers
- Warehouses
- Storage Facilities
- Manufacturing Plants

Features:

- Ultra slim 2.36" width architectural design LED Strip fixture
- Steel housing with white powder coat finish
- 4ft & 8ft lengths available
- Multiple dimming & sensor options to fully control occupied & unoccupied light levels
- Round frosted acrylic lens
- Ceiling, wall, or suspension mounting options
- Junction box cover included
- 3500K-5000K CCT
- 0-10V Dimmable Driver (100%-10%)
- >80 Color Range Index (CRI)
- Calculated L70 >100,000 hours
- 120-277V Universal Voltage
- 5 Year Warranty
- UL Listed for Damp Locations
- DesignLights Consortium® Premium Qualified Luminaire

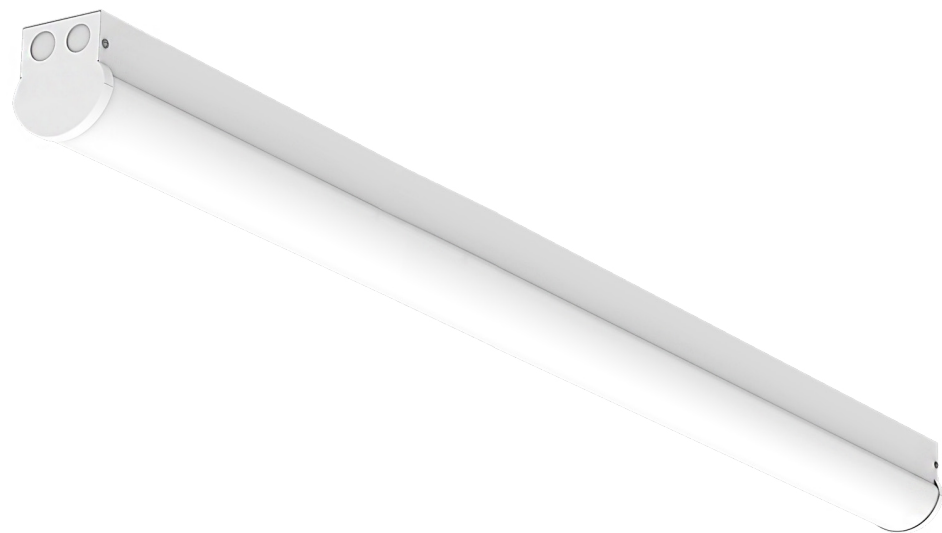
Options:

- Sensors
- Cords
- Wire Cage
- Battery Backups
- 347 & 480V
- Various Mounting Kits



Part Number	Lumens	Watts	Lm/W	Replaces	DLC
SS4-26WLED-U-40-FRAL	3,458	26	133	2T8	PREMIUM
SS4-35WLED-U-40-FRAL	4,655	35	133	1T5HO	PREMIUM
SS4-46WLED-U-40-FRAL	6,026	46	131	3T8	PREMIUM
SS8-46WLED-U-40-FRAL	6,118	46	133	1T12HO	PREMIUM
SS8-65WLED-U-40-FRAL	8,775	65	135	2T5HO	PREMIUM
SS8-90WLED-U-40-FRAL	11,790	90	131	4T8	PREMIUM

VALUE STRIP



Overview:

With a durable construction design and architectural appearance the VS Strip is ideal for schools, retail, warehouses, storage facilities, and manufacturing facilities. Available 4ft and 8ft lengths allow for continuous and stand alone mounting. Ceiling, wall or suspension mounting provides complete flexibility when designing or retrofitting a space.

Applications:

- Retail
- Education
- Distribution Centers
- Warehouses
- Storage Facilities
- Manufacturing Plants

Features:

- Architectural 3.36" width design LED Strip fixture
- Steel housing with white powder coat finish
- 4ft & 8ft lengths available
- Multiple dimming & sensor options to fully control occupied & unoccupied light levels
- Round Frosted Acrylic Lens
- Ceiling, wall or suspension mounting options
- 4000K & 5000K CCT
- 0-10V Dimmable Driver (100%-10%)
- 120-277V Universal Voltage
- >80 Color Range Index (CRI)
- Calculated L70 >100,000 hours
- 5 Year Warranty
- UL Listed for Damp Locations
- DesignLight Consortium® Premium Qualified Luminaire

Options:

- Sensors
- Battery Backups
- Cords
- 347 & 480V
- Wire Cage
- Various Mounting Kits



Part Number	Lumens	Watts	Lm/W	Replaces	DLC
VS4-25WLED-U-40-FRAL	3,325	25	133	2T8	PREMIUM
VS4-35WLED-U-40-FRAL	4,620	35	132	1T5HO	PREMIUM
VS4-46WLED-U-40-FRAL	5,980	46	130	3T8	PREMIUM
VS8-46WLED-U-40-FRAL	5,980	46	130	1T12HO	PREMIUM
VS8-65WLED-U-40-FRAL	8,580	65	132	2T5HO	PREMIUM
VS8-90WLED-U-40-FRAL	11,700	90	130	4T8	PREMIUM



FX STRIPS



Overview:
Utilizing a Patent Pending integrated light engine design, the FX produces up to 152 lm/W providing up to 60% energy savings. Ideal for retrofit and new construction spaces. Durable construction design suitable for a variety of applications including schools, industrial spaces, retail, grocery stores and storage facilities.

- Applications:**
- Retail
 - Education
 - Distribution Centers
 - Warehouses
 - Grocery Stores
 - Manufacturing Plants

- Features:**
- Available in 4ft & 8ft Lengths:
 - Slim Version — 2.9" Wide (FXS)
 - Wide Version — 4.4" Wide (FX)
 - Durable Steel Construction Housing
 - Patent Pending Integrated Light Engine Design
 - 120-277 Universal Voltage (Non-Dimmable)
 - High Efficacy — Up to 152 lm/W
 - 4000K & 5000K CCT
 - >80 Color Range Index (CRI)
 - Calculated L70 > 100,000 hours
 - 5 Year Warranty
 - ETL Listed for Dry and Damp Locations
 - DesignLights Consortium® Premium Qualified Luminaire

- Options:**
- Sensors
 - Cords
 - Surge Protector
 - Battery Backups
 - 347 & 480V
 - Various Mounting Kits



Part Number	Lumens	Watts	Lm/W	Replaces	DLC
SS4-26WLED-U-40-FRAL	3,458	26	133	2T8	PREMIUM
SS4-35WLED-U-40-FRAL	4,655	35	133	1T5HO	PREMIUM
SS4-46WLED-U-40-FRAL	6,026	46	131	3T8	PREMIUM
SS8-46WLED-U-40-FRAL	6,118	46	133	1T12HO	PREMIUM
SS8-65WLED-U-40-FRAL	8,775	65	135	2T5HO	PREMIUM
SS8-90WLED-U-40-FRAL	11,790	90	131	4T8	PREMIUM

RX STRIP RETROFIT



Overview:

With an All-in-One adjustable cover the RX strip retrofit kit can upgrade existing strip fixtures from 4.3" to 5.5" wide in under 5 minutes. Utilizing a Patent Pending integrated light engine design, the RX produces up to 152 lm/W providing up to 60% energy savings. Ideal for a variety of applications including schools, industrial spaces, retail, grocery stores and storage facilities.

Applications:

- Retail
 - Education
 - Distribution Centers
- Warehouses
 - Grocery Stores
 - Manufacturing Plants

Features:

- Retrofit existing strips—4.3" to 5.5" wide
 - All-in-One Adjustable Cover
 - Aligns to existing fixture width
 - Retrofit in under 5 minutes
- Patent Pending Integrated Light Engine Design
- 120–277V Universal Voltage (Non-Dimmable)
- High Efficacy—Up to 152 lm/W
- 4ft & 8ft lengths available
- 4000K & 5000K CCT
- >80 Color Range Index (CRI)
- Calculated L70 >100,000 hours
- 5 Year Warranty
- ETL Listed for Dry and Damp Locations
- DesignLights Consortium® Premium Qualified Luminaire

Options:

- Sensors
 - Battery Backups
- Cords
 - 347 & 480V
- Surge Protector



Part Number	Lumens	Watts	Lm/W	Replaces	DLC
RX4-12W-U-40	1,821	12	147	1T8	PREMIUM
RX4-24W-U-40	3,508	25	142	2T8	PREMIUM
RX8-24W-U-40	3,657	25	149	2T8	PREMIUM
RX8-48W-U-40	7,110	49	144	4T8	PREMIUM



WTX VAPOR TIGHT



Overview:

This IP65, IP66, IP67 and NSF listed vapor tight is durable for the toughest of applications and food prep environments. The WTX Vapor Tight utilizes a Patent Pending integrated light engine design to provide an energy savings solution. Available with a variety of lens and latching options the WTX is ideal for outdoor venues, industrial spaces, food manufacturing and freezers.

Applications:

- Parking Garages
- Pool Areas (SS Latches)
- Car Washes (SS Latches)
- Food Processing and Preparation (SS Latches)
- Grocery Stores
- Coolers and Freezers

Features:

- Available in 4ft & 8ft Lengths
- Continuous poured, closed cell polyurethane gasket
- Fiberglass body attributes:
 - IP65, IP66, IP67 (Dust tight, low/high pressure water jets and immerse 1M)
 - NEMA4X, NSF Listed & 5VA Flame Rated
- Polycarbonate Latches (std.), Stainless Steel (SS) optional
- Tamper Proof Screws (TPS) optional
- Patent Pending Integrated Light Engine Design
- 120-277V Universal Voltage (Non-Dimmable)
- High Efficacy—Up to 138 lm/W
- -40°F-104°F Ambient Temperature Range
- 4000K & 5000K CCT
- >80 Color Range Index (CRI)
- Calculated L70 >100,000 hours
- 5 Year Warranty
- ETL Listed for Wet Locations
- DesignLights Consortium® Premium Qualified Luminaire



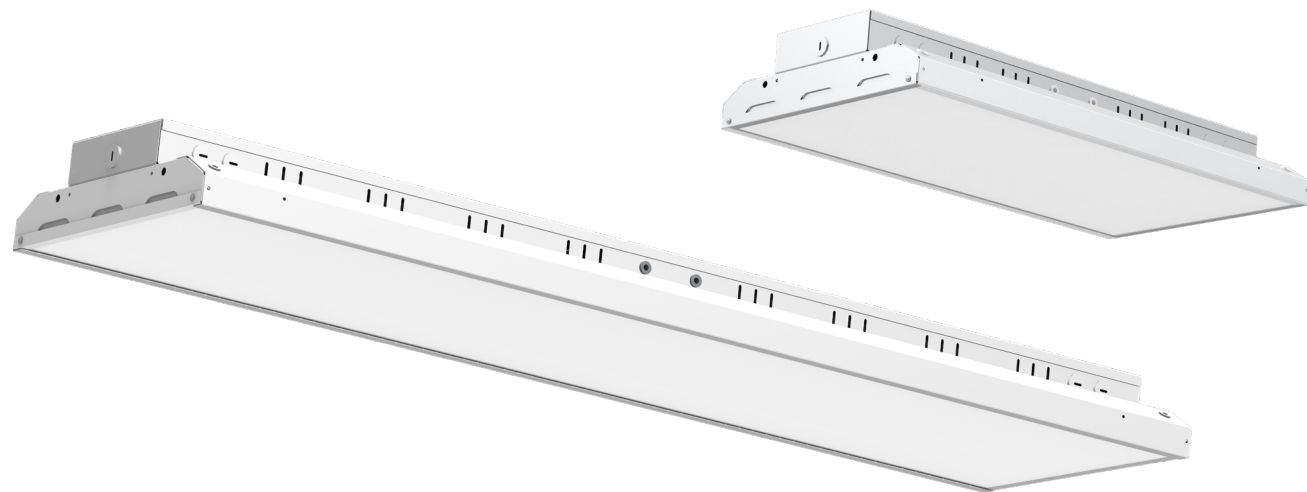
Options:

- Lensing
- Sensors
- Battery Backups
- Cords
- 347 & 480V
- Surge Protector
- Stainless Steel Latches
- Tamper Proof Screw
- Various Mounting Kits



Part Number	Lumens	Watts	Lm/W	Replaces	DLC
WTXS-12W-U-50-SACL	1,694	12	137	1T8	PREMIUM
WTX-12W-U-50-SACL	1,706	12	138	1T8	PREMIUM
WTX-24W-U-50-SACL	3,295	25	134	2T8	PREMIUM
WTX-36W-U-50-SACL	4,830	37	131	1T5	PREMIUM
WTX8-24W-U-50-SACL	3,413	25	138	2T8	PREMIUM
WTX8-48W-U-50-SACL	6,592	49	134	2T8	PREMIUM
WTX8-72W-U-50-SACL	9,647	74	131	4T8	PREMIUM

HHB HIGH BAY



Overview:

New construction or retrofit the HHB High Bay fits the build. With a high max ambient rating, 7 lumen packages and a wide variety of sensor options the HHB provides cost effective lighting for high bay applications from 10ft to 50ft mounting heights. Ideal for warehouses, distribution centers, manufacturing plants and gymnasiums.

Applications:

- Gymnasiums
- Warehouses
- Distribution Centers
- Manufacturing Plants

Features:

- Post painted white steel body for maximum rigidity & durability
- 8,000 – 56,000 Lumen Package Range
- Compact housing delivering up to 24,000 lumens in 2ft body
- Impact resistant frosted acrylic lens (included)
- V-Clips for dual chain or cable hanging (included)
- -4°F–122°F Ambient Temperature Range
- 4000K & 5000K CCT
- >80 Color Rendering Index (CRI)
- Calculated L70 >100,000 hours
- 0–10V Dimmable Driver (100%–10%)
- 120–277V Universal Driver
- 5 Year Warranty
- UL Listed for Damp Locations
- DesignLights Consortium® Premium Qualified Luminaire

Options:

- Sensors
- Cords
- Various Mounting Kits
- Battery Backups
- 347 & 480V



Part Number	Lumens	Watts	Lm/W	Replaces	DLC
HHB-8L-U-50-FRL	8,295	63	132	2T5HO	PREMIUM
HHB-12L-U-50-FRL	11,717	89	131	250W MH	PREMIUM
HHB-18L-U-50-FRL	17,583	133	132	400W MH	PREMIUM
HHB-24L-U-50-FRL	23,187	178	130	400W MH	PREMIUM
HHB-34L-U-50-FRL	34,945	267	131	8T5HO	PREMIUM
HHB-321WLED-UNIV-50-FRL	42,512	318	134	1000W MH	PREMIUM
HHB-425WLED-UNIV-50-FRL	56,660	421	135	1000W MH	PREMIUM

VALUE SQUARE CANOPY



Overview:

The Value Square series is the ideal solution for replacing existing canopy or parking garage luminaires from CFL to 250W Metal Halide. Value Square's energy efficient design results in energy savings up to 85% at a price point that allow customers to quickly meet their financial payback thresholds. Serving a broad range of applications from parking structures to pavilions, the versatile Value Square series provides a seamless retrofit solution with its 10" wide housing designed to cover most existing housing footprints.

Applications:

- Walkway
- Loading Dock
- Car Ports
- Parking Garage
- Building Perimeter / Security Lighting
- Entrances
- Stairways

Features:

- Low profile die-cast aluminum housing
- Bronze polyester powder coat finish (std.)
- Custom and factory select finishes available¹
- UV stabilized and impact resistant diffuse polycarbonate lenses
- Up to 3% Uplight eliminates cave effect
- T5 Medium lens standard; Optional T5 Wide parking garage lens (PG)
- Quick mount bracket standard for easy surface mount installation
- ¾" conduit entry on top for center pendant mount
- Three ½" coin plugs on sides for conduit or photocell
- 120-277V Universal Voltage or 347-480V High Voltage
- 0-10V Dimmable Driver (std.)
- Remote Battery backup & cold weather battery options available
- Optional Microwave sensor for 360 degree motion detection discretely installed behind the lens
- 4000K & 5000K CCT
- >80 Color Rendering Index (CRI)
- IP65 Rated Luminaire
- 5 Year Warranty
- UL Listed for Wet Locations
- DesignLights Consortium® Premium Qualified Luminaire



Options:

- Remote Battery Backups
- Remote Cold Battery Backups
- Photocell
- Microwave Sensor
- Bi-level Dimming
- Surge Protector
- 347 & 480V



Part Number	Lumens	Watts	Lm/W	Replaces	DLC
CP-5L-U-40	5,090	40	127	150W MH	PREMIUM
CP-7L-U-40	7,328	59	124	175W MH	PREMIUM
CP-9L-U-40	8,192	66	124	250W MH	PREMIUM
CP-5L-U-40-PG	5,093	40	127	150W MH	PREMIUM
CP-7L-U-40-PG	7,602	59	129	175W MH	PREMIUM
CP-9L-U-40-PG	8,455	66	128	250W MH	PREMIUM

OPEN FACE WALL PACK



Overview:

The Value Open Face Wall Pack Series allows you to use a single wall pack for replacing 50W – 400W metal halide luminaires. Cast in a traditional dayform, the Value Open Face Wall Packs offer a popular classic appearance while featuring the latest energy-efficient LED technology.

Applications:

- Education
- Shopping Center
- Warehouse
- General Area Lighting

Features:

- Rugged die-cast aluminum housing
- Bronze polyester powder coat finish (std.)
- Custom and factory select colors available¹
- Non-Cutoff Type IV distribution
- Optional Hood for semi-cutoff Type IV distribution
- Impact resistant frosted low glare prismatic polycarbonate lens with UV stabilizers
- Silicone lens gasket and rubber housing gasket provide secure watertight seal
- Built in base bubble level for easy installation
- ½" coin plugs with o-rings for conduit or optional photocell
- 120–277V Universal Voltage
- 0–10V Dimmable Driver (std.)
- Battery backup & cold weather battery options available
- PIR Occupancy, Photocell, & Bi-Level Dimming sensors available
- 4000K & 5000K CCT
- >70 Color Rendering Index (CRI)
- Calculated L70 >75,000 hours @ 25°C per TM-21-11
- IP65 Rated Luminaire
- 5 Year Warranty
- ETL Listed for Wet Locations
- DesignLights Consortium® Qualified Luminaire

¹Contact factory for pricing and availability



Options:

- Battery Backups
- Cold Temp Battery Backups
- PIR Sensor
- Hood
- Bi-Level Dimming
- Surge Protector
- 347 & 480V



Part Number	Lumens	Watts	Lm/W	Replaces	DLC
WPSO-30WLED-UNIV-40	4,097	31	130	100W MH	PREMIUM
WPMO-45WLED-UNIV-40	5,049	45	113	175W MH	STANDARD
WPMO-70WLED-UNIV-40	7,770	70	112	250W MH	STANDARD
WPLO-90WLED-UNIV-40	10,414	90	116	320W MH	STANDARD
WPLO-135WLED-UNIV-40	15,340	135	114	400W MH	STANDARD

VALUE SLIM WALL PACK



Overview:
The Value Slim Series Wall Pack is the perfect solution for a broad range of low to high mounting applications. Utilizing the latest CCT Selectable LED technology, the Value Slim Wall Pack luminaire delivers an expansive range of solutions with premium performance, ease of installation, long term reliability and notable energy savings, making the Value Slim Wall Pack an easy choice for your next lighting project.

- Applications:**
- Education
 - Warehouse
 - Shopping Center
 - General Area Lighting

- Features:**
- Low profile die-cast aluminum housing
 - Bronze polyester powder coat finish (std.)
 - Isolated optical compartment with tempered glass lens and silicone gaskets
 - 90° adjustable Type IV distribution or Optional IDA fixed model¹
 - Quick mount bracket standard for easy surface mount installation
 - Three ½" coin plugs on sides for conduit or electronic photocell
 - 120-277V Universal Voltage or 347-480V High Voltage²
 - 0-10V Dimmable Driver (std.)
 - Deep box 10W battery backup & cold weather battery options
 - Optional Field Adjustable Output device (FAO) allows individual luminaire lumen output control
 - 3000K, 4000K & 5000K CCT Selectable via Integral selector
 - >80 Color Rendering Index (CRI)
 - Calculated L70 >100,000 hours @ 25°C per TM-21-11
 - IP65 Rated Luminaire
 - 5 Year Warranty
 - ETL Listed for Wet Locations
 - DesignLights Consortium® Premium Qualified Luminaire
- ¹ Fixed 3000K CCT model only
² 347-480V available in 5L, 8L, 10L Lumen Packages Only



- Options:**
- Battery Backups
 - Photocell
 - IDA
 - Cold Temp Battery Backups
 - Surge Protector
 - Beauty Plates
 - Field Adjustable Output
 - 347 & 480V



Part Number	Lumens*	Watts	Lm/W	Replaces	DLC
SWP-2L-U-CCTS	2,649	20	132	100W MH	PREMIUM
SWP-3L-U-CCTS	3,310	23	144	150W MH	PREMIUM
SWP-5L-U-CCTS	5,669	40	142	175W MH	PREMIUM
SWP-8L-U-CCTS	8,678	60	145	250W MH	PREMIUM
SWP-10L-U-CCTS	10,581	75	141	400W MH	PREMIUM

*Based off 4000K Correlated Color Temperature (CCT) selected via integral selector



ilp-inc.com

An ILLUMUS Brand

