



HOSPITALITY APPLICATION BROCHURE



CONTENT

LOBBY & LOUNGE	1
RECEPTION	3
CORRIDORS & TRANSITION AREAS	5
GUEST ROOMS & SUITES	7
BATHROOMS	9
GYMNASIUMS & WELLNESS AREAS	11
DINING SPACES	13
MULTIPURPOSE ROOMS	15
OFFICES & ADMINISTRATION	17
STORAGE	19
CONTROLS	21
EMERGENCY	23



GREAT LIGHTING CREATES UNFORGETTABLE EXPERIENCES

From check-in to check-out, the user journey in a hospitality setting must be flawless. Lighting design is an important, but often overlooked, part of that experience. The right light brings pleasure and purpose to each room. Whether the booking is for a frequent customer in town for a meeting or a couple on a weekend getaway, great lighting makes the stay unforgettable.

Flexibility and energy efficiency are key for proper illumination. Each space in a hotel has a different function; the proper lighting design must be chosen to suit the needs of the room. Luminaires in some rooms and hallways may stay on for long periods of time, resulting in higher energy costs and more frequent replacements. To overcome these obstacles, hotels need a wide assortment of long-lasting, energy-efficient lighting products.

GREEN CREATIVE offers LED lighting solutions for each aspect of the hospitality industry. Whether the guest is sipping coffee in the café, attending a conference in a multi-purpose room, enjoying a workout in the gym, or reading before bed, the right lighting product ensures visual comfort throughout the stay.



LOBBY & LOUNGE

A hotel's lobby immediately informs the guest of the brand's identity. Good lighting creates an atmosphere that integrates with the space's features, furniture, and architecture. Lighting may shift depending on the time of day, and designs should be responsive enough to make use of natural light during the daytime and aesthetic lighting in the evenings.

DECO LARGE FILAMENT SERIES



Deco large filament series from GREEN CREATIVE combines the timeless beauty of classic style or simplicity & elegance of modern style with the durability, reliability, and energy savings of advanced LED technology.

Either installed into an existing fixture or simply used as a stand alone fixture, these decorative light bulbs create a pleasant glow for a vintage or modern atmosphere. With unique spiral LED filament design inspired by incandescent bulbs, they fit flawlessly in any setting.

The deco large size filament series also best matches with our E26 base pendant light kit, offered in elegant golden finish or classic black finish.

These bulbs are 120V dimmable for individually customized illumination as well as more energy and cost savings. Full glass design, wet location rated and suitable for totally enclosed fixtures, the bulbs can be installed in various applications indoor or outdoor. Industry-leading long lifetime of 25,000 hours guarantee better durability and reliability.



A LAMPS

- Suitable to replace 60W, 75W, 100W incandescent lamps
- Provides comfortable, diffused light
- Dimmable with forward and reverse phase controls



REFINE MR LAMPS

- Suitable to replace up to a 75W halogen MR lamp
- Powered by TRUE CHROMA technology (95 CRI min)
- Smooth dimming with most electronic low-voltage dimming controls



PL LAMPS

- Replacements for fluorescent lamps from 7W - 42W
- Bases compatible with most fluorescent pin sockets
- Options for plug and play ballast install or wiring to line voltage



REFINE PAR LAMPS

- Powered by TRUE CHROMA technology
- High color fidelity, balanced light distribution, and minimal glare
- Wide offering of CCTs, beam angles, and wattages



SPECFIT

- 4", 6", 8" & 9.5" form factors
- Adjustable lumen output
- TRUE CHROMA version available



PXCYL

- 2", 4", 6", 8" sizes
- Comprehensive mounting options
- Industry leading lumen selectable output up to 5,000lm



ENVI DESIGNER PANEL

- Lumen and CCT Selectable
- Various Lens Options
- Acrylic Drop Lens
- Acoustic Drop Panels



TROFFER KIT (LANCE)

- Architecturally designed volumetric troffer retrofit kit
- High efficacy - up to 151 lm/W for enhanced energy savings
- Advanced controls options for asset tracking



VOLUMETRIC TROFFER (VOLA)

- Architecturally designed volumetric troffer
- High efficacy - up to 151 lm/W for enhanced energy savings
- Advanced controls options for asset tracking



RECEPTION

First impressions are made not by grand designs, but by subtle features. The details of a reception area's lighting scheme can transform an experience. Guests may be distracted, irritable, or in a hurry, so these spaces should be designed to reassure, but also to get the job done. Task lighting as well as ambient lighting can make the front desk business as pleasant as any other experience during the guest's stay.

REFINE MR LAMPS



REFINE MR16 lamps are designed with GREEN CREATIVE's proprietary REFINE lens, efficiently delivering powerful light with intense center beam candle power and even light distribution, while eliminating uncomfortable glare. Powered by GREEN CREATIVE's TRUE CHROMA technology, these lamps ensure best in class color rendering and color consistency, while exceeding the most stringent industry efficiency criteria such as California's Title 20 and Title 24 JA8. REFINE MR lamps are designed to work with GREEN CREATIVE's TRUE BEAM accessories which enable professionals to precisely realize any lighting design that can be imagined. With L70 rated long lifetime of 25,000 hours and backed by an industry leading 5-year warranty, REFINE MR16 lamps are perfect for fulfilling all kinds of hospitality lighting needs.



PXCYL

- 2", 4", 6", 8" sizes
- Comprehensive mounting options
- Industry leading lumen selectable output up to 5,000lm



SPECFIT

- 4", 6", 8" & 9.5" form factors
- Adjustable lumen output
- TRUE CHROMA version available



SELECTFIT G2

- 4", 6", 8" & 9.5" form factors
- Field adjustable 3 level lumen outputs and 5 CCTs
- DualDim for both 120V TRIAC/ELV and 0-10V dimming



MINIFIT

- 1" & 2" 360° rotation gimbals
- 2" module with extensive trim selections
- Perfect for shallow plenum construction



ORBIT TRACK

- Specification grade & performance design
- Spot, narrow & flood interchangeable optics
- Industry leading lumen selectable output range



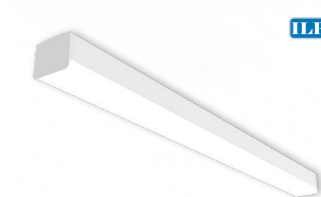
REFINE PAR LAMPS

- Powered by TRUE CHROMA technology
- High color fidelity, balanced light distribution, and minimal glare
- Wide offering of CCTs, beam angles, and wattages



ENVI DESIGNER PANEL

- Lumen and CCT Selectable
- Various Lens Options
- Acrylic Drop Lens
- Acoustic Drop Panels



DISCOVERY LINEAR STRIP (DSC)

- Highly configurable spec grade strip
- No visible fasteners providing a smooth uninterrupted design
- Standard Efficacy (SE) and High Efficacy (HE) lumen packages
- 2', 4' & 8' lengths available



QWIKLINK STRIP (QL)

- Versatile specification grade linear strip solution
- Ceiling, wall, pendant or suspension mounting option
- 2' & 4' lengths



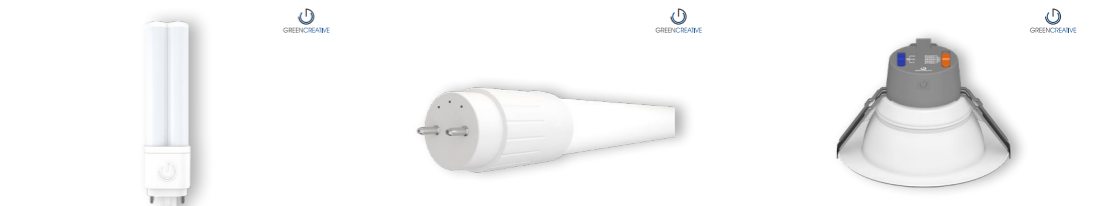
CORRIDORS & TRANSITION AREA

Not to be ignored, hallways, stairwells, and other transition areas are meant to guide the guest through the hotel's user journey. There is often little natural light in these areas, yet they are important parts of the hotel's concept. Lighting may compliment artwork or highlight entrances and exits. Proper use of accent lighting, wall lighting, and sconces can create a layout that is uniform but not monotonous.

CAVERN STAIRWELL (CV)



ILP's Cavern Stairwell luminaire provides a safe, robust and attractive design ideal for wall or ceiling mounting. As stairwells are unoccupied 90% throughout the day, fully control light levels for both occupied and unoccupied areas with high/low user selectable bi-level dimming options for maximum energy savings. Cavern's specification design, performance, housing lengths, finishes, sensor and emergency options make it the proper choice for stairwell illumination.



PL LAMPS

- Replacements for fluorescent lamps from 7W - 42W
- Bases compatible with most fluorescent pin sockets
- Options for plug and play ballast install or wiring to line voltage

T8 LAMPS

- Options for plug and play ballast install, line voltage wiring, or external driver, are available
- Options for replacing most linear fluorescent lamps
- Wide light emitting area

SELECTFIT G2

- 4", 6", 8" & 9.5" form factors
- Field adjustable 3 level lumen outputs and 5 CCTs
- DualDim for both 120V TRIAC/ELV and 0-10V dimming



3N1

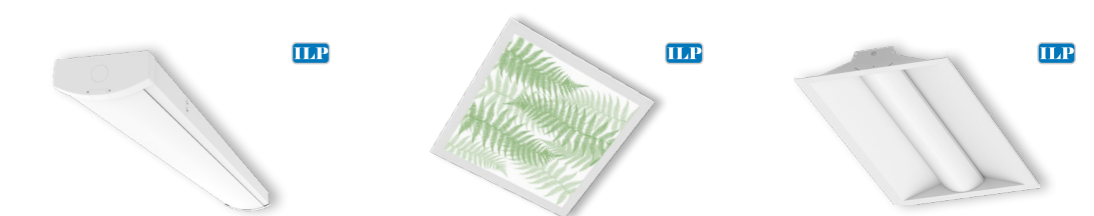
- 5", 7", 9" and 12" surface mount
- Adjustable CCT
- Direct ceiling, recessed housing & J-Box mounting options

CURVED WRAP (SQ)

- Sleek curved profile wrap fixture
- Suitable for installing in continuous runs
- 2', 4' & 8' lengths

QWIKLINK STRIP (QL)

- Versatile specification grade linear strip solution
- Ceiling, wall, pendant or suspension mounting option
- 2' & 4' lengths



UTILITY WRAP (SWR)

- Sleek modern design
- Suitable for continuous run applications
- 2ft and 4ft configurations

ENVI DESIGNER PANEL

- Lumen and CCT Selectable
- Various Lens Options
- Acrylic Drop Lens
- Acoustic Drop Panels

VOLUMETRIC TROFFER (VOLA)

- Architecturally designed volumetric troffer
- High efficacy - up to 151 lm/W for enhanced energy savings
- Advanced controls options for asset tracking



GUEST ROOMS & SUITES

Whether a first-time customer or a returning user, all guests expect comfort and peace. Lighting in guest rooms should generate feelings of relaxation, wellbeing, and privacy. Both budget hotels and high-end resorts can create feelings of luxury by giving guests control over their ambiance. Highly flexible and dimmable lighting options allow customers to create atmospheres that suit their unique moods.

MINIFIT



At less than two inches, the miniFIT series of recessed fixtures pack a powerful punch from a small, shallow design. Perfectly sized for installation in casework, soffits, bulkheads and other shallow plenum applications. Get the right light in the right place with the miniFIT gimbals, or to complement many different applications with a variety of field interchangeable trim options offered by the miniFIT 2" modules. The 90 CRI miniFIT series of fixtures provide the right light for your wall wash, wall grazing or highlighting need for hospitality areas.



A LAMPS

- Suitable to replace 60W, 75W, 100W incandescent lamps
- Provides comfortable, diffused light
- Dimmable with forward and reverse phase controls

REFINE MR LAMPS

- Suitable to replace up to a 75W halogen MR lamp
- Powered by TRUE CHROMA technology (95 CRI min)
- Smooth dimming with most electronic low-voltage dimming controls

SELECTFIT G2

- 4", 6", 8" & 9.5" form factors
- Field adjustable 3 level lumen outputs and 5 CCTs
- DualDim for both 120V TRIAC/ELV and 0-10V dimming



ATOM TRACK

- Classic, minimalistic, cylindrical form factor
- CRI 90, 2700K, 3000K, 4000K CCTs
- Up to 1050 lumens in 25° or 35° beam angles

CLICK WITH SENSOR

- Integrated PIR sensor
- Wet, IC & Air-tight rated
- Nonconductive polycarbonate trim

3NI

- 5", 7", 9" and 12" surface mount
- Adjustable CCT
- Direct ceiling, recessed housing & J-Box mounting options



ENVI DESIGNER PANEL

- Lumen and CCT Selectable
- Various Lens Options
- Acrylic Drop Lens
- Acoustic Drop Panels

DISCOVERY LINEAR STRIP (DSC)

- Highly configurable spec grade strip
- No visible fasteners providing a smooth uninterrupted design
- Standard Efficacy (SE) and High Efficacy (HE) lumen packages
- 2', 4' & 8' lengths available

QWIKLINK STRIP (QL)

- Versatile specification grade linear strip solution
- Ceiling, wall, pendant or suspension mounting option
- 2' & 4' lengths



BATHROOMS

While bathroom lighting is overlooked in many applications, in hospitality it is often a defining feature. Many guests book stays to enjoy a more luxurious decor than what they find at home. Accent lighting and fixtures with damp location ratings are preferred. Dimming functions give guests control, while occupancy sensors help hotels keep energy costs low.

CLICK WITH SENSOR



The integral passive infrared sensor of the CLICK surface mount fixture helps deliver a balance between high quality 90 CRI light and energy savings in variable occupancy spaces. Turning on instantly with room occupancy and off after ten minutes of room vacancy, the CLICK provides easy and reliable fixture control and performance.



PL LAMPS

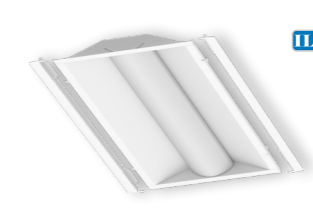
- Replacements for fluorescent lamps from 7W - 42W
- Bases compatible with most fluorescent pin sockets
- Options for plug and play ballast install or wiring to line voltage

VERSA & PREMIUM FILAMENTS

- High CRI and R values (R9 53, R13 93) deliver richer reds and healthier skin tones
- Omnidirectional beam angle
- Suitable for use in wet location

MINIFIT

- 1" & 2" 360° rotation gimbals
- 2" module with extensive trim selections
- Perfect for shallow plenum construction



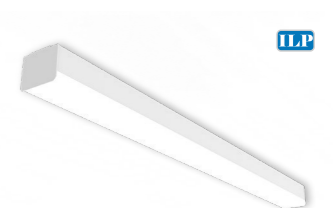
TROFFER KIT (LANCE)

- Architecturally designed volumetric troffer retrofit kit
- High efficacy - up to 151 lm/W for enhanced energy savings
- Advanced controls options for asset tracking



ENVI DESIGNER PANEL

- Lumen and CCT Selectable
- Various Lens Options
- Acrylic Drop Panels



DISCOVERY LINEAR STRIP (DSC)

- Highly configurable spec grade strip
- No visible fasteners providing a smooth uninterrupted design
- Standard Efficacy (SE) and High Efficacy (HE) lumen packages
- 2', 4' & 8' lengths available



QWIKLINK STRIP (QL)

- Versatile specification grade linear strip solution
- Ceiling, wall, pendant or suspension mounting option
- 2' & 4' lengths



GYMNASIUMS & WELLNESS AREAS

Guests may use gyms and wellness areas to energize in the mornings or decompress in the evenings. Atmospheric lighting can create a sense of calm and warmth, while general lighting can highlight workout areas. Luminaires with low glare and a variety of options in color temperature are recommended. Waterproof fixtures are needed if products are installed near spas or swimming areas.

PXCYL



PXCYL is a versatile series of cylinder downlights with brilliant performance. Featured with SelectDrive technology, PXCYL allows for field selection of three lumen outputs with either 120V or 0-10V dimmable option. Field-interchangeable optical accessories let the user choose from five beam angles. PXCYL series of downlights offer comprehensive mounting choices, including surface, wall, wall up-light, pendant, suspension, and track suspension, available in four sizes. From artistic to purely utilitarian, the PXCYL is suitable for any commercial or residential application. PXCYL has been engineered to ensure color uniformity. Five color temperatures at 90 CRI are available, and a TRUE CHROMA option for 3000K models helps you meet the most stringent color fidelity requirements.



T8 LAMPS

- Options for plug and play ballast install, line voltage wiring, or external driver, are available
- Options for replacing most linear fluorescent lamps
- Wide light emitting area



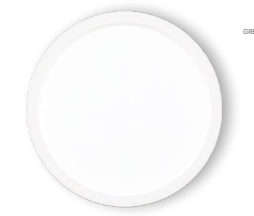
T5 LAMPS

- Meets NSF requirements, plastic construction will not shatter
- Options for plug and play ballast install, line voltage wiring, or external driver, are available



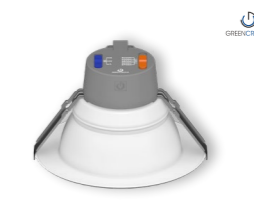
POWER AND CCT SELECT HID REPLACEMENT LAMPS

- Innovative locking cover to secure power and CCT settings after installation
- Field selectable CCT and light output levels
- Available in classic A21, A23 and PS30 bulb shapes



3N1

- 5", 7", 9" and 12" surface mount
- Adjustable CCT
- Direct ceiling, recessed housing & J-Box mounting options



SELECTFIT G2

- 4", 6", 8" & 9.5" form factors
- Field adjustable 3 level lumen outputs and 5 CCTs
- DualDim for both 120V TRIAC/ELV and 0-10V dimming



SPECFIT

- 4", 6", 8" & 9.5" form factors
- Adjustable lumen output
- TRUE CHROMA version available



ROUND HIGH BAY (RB4)

- Aesthetically pleasing compact round high bay
- Frosted primary lens & diffusers provide soothing optics
- 14,000 to 34,000 lumens



ENDEAVOUR HIGH BAY (EDV 2.0)

- Sleek curved polycarbonate end caps for polished look
- Uplight option to enhance full room illumination
- White & black housing options



EVEREST HIGH BAY (EVT 2.0)

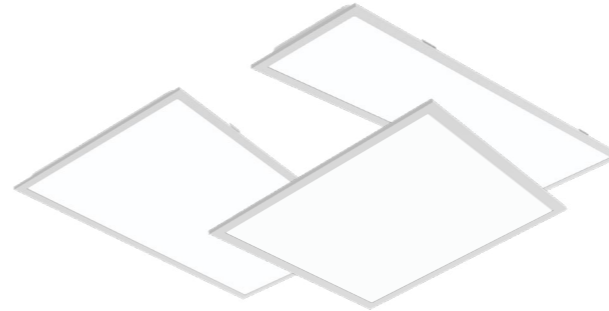
- 12,000 to 60,000 Lumens
- CCT and Lumen Selectable Models
- Patent Pending Field Changeable Lenses
- 16", 30", 36" models



DINING SPACES

Lighting in a hotel's dining space is as multifaceted as lighting in any restaurant or cafeteria. Whether food is served buffet-style or from a menu, authentic color rendering ensures that meals look appetizing. Designs should be adaptive enough to allow staff to rearrange seating areas and add tables. Kitchen lighting needs to be bright and unobtrusive to ensure safety.

BACK LIT FLAT PANEL (VPAN SELECT)



VPAN Select takes the ubiquitous Flat Panel luminaire to the next level with full selectability of lumen output and color temperature. It is the perfect solution for many troffer applications and the new selectability offers simplicity and SKU reduction opportunities. Designed with micro-optics that produce smooth and uniform low-glare illumination for optimal visual comfort. Its built-in tool-less field-selectable technology offers three lumen options and three CCT options offering elite versatility when needed most. With a depth under 2", VPAN's robust die-formed housing easily installs in shallow plenums with room to spare.



T8 LAMPS

- Options for plug and play ballast install, line voltage wiring, or external driver, are available
- Options for replacing most linear fluorescent lamps
- Wide light emitting area



T5 LAMPS

- Meets NSF requirements, plastic construction will not shatter
- Options for plug and play ballast install, line voltage wiring, or external driver, are available



PXCYL

- 2", 4", 6", 8" sizes
- Comprehensive mounting options
- Industry leading lumen selectable output up to 5,000lm



SELECTFIT G2

- 4", 6", 8" & 9.5" form factors
- Field adjustable 3 level lumen outputs and 5 CCTs
- DualDim for both 120V TRIAC/ELV and 0-10V dimming



DECO LARGE FILAMENTS

- Unique and abundant form factors
- Installed into a light fixture or simply used alone
- Optional golden or black E26 pendant light kit



GRID FRAME HIGH BAY (GH)

- High performance recessed high bay
- Various lens options for aesthetics
- 2x2' & 2x4' sizes



ENVI DESIGNER PANEL

- Lumen and CCT Selectable
- Various Lens Options
- Acrylic Drop Lens
- Acoustic Drop Panels



VOLUMETRIC TROFFER (VOLA)

- Architecturally designed volumetric troffer
- High efficacy - up to 151 lm/W for enhanced energy savings
- Advanced controls options for asset tracking



TROFFER KIT (LANCE)

- Architecturally designed volumetric troffer retrofit kit
- High efficacy - up to 151 lm/W for enhanced energy savings
- Advanced controls options for asset tracking



MULTIPURPOSE ROOMS

Many guests will spend the majority of their stay inside event rooms. It is important that these areas have positive energy to foster successful meetings and create lasting impressions. Lighting designs should incorporate flexibility for the variety of functions that will take place in these spaces. And as many of these rooms have high ceilings, fixtures with long lifetimes are recommended to reduce maintenance costs.

PAR56 LAMP



The REFINE PAR56 lamp is designed with a proprietary GREEN CREATIVE driver which provides flicker free dimming performance with most forward and reverse phase controls. The REFINE optic maximizes the center beam candle power from our 90+ CRI light engine while eliminating glare. The heatsink design allows the lamp to be used in enclosed applications and still maintain a 50,000 hour lifetime. The REFINE PAR56 lamps will replace any GX16d base 300W-500W halogen lamp. The compatible PAR64 adapter ring is also available for easy retrofitting in PAR64 fixtures.



NOVA TRACK LIGHT

- Wide and uniform lighting across expansive surfaces from top to bottom
- Field selectable CCT and lumen levels
- 360° rotating head and 90° pivot design



PXCYL

- 2", 4", 6", 8" sizes
- Comprehensive mounting options
- Industry leading lumen selectable output up to 5,000lm



SPECFIT

- 4", 6", 8" & 9.5" form factors
- Adjustable lumen output
- TRUE CHROMA version available



ROUND HIGH BAY (RB4)

- Aesthetically pleasing compact round high bay
- Frosted primary lens & diffusers provide soothing optics
- 14,000 to 34,000 lumens



VOLUMETRIC TROFFER (VOLA)

- Architecturally designed volumetric troffer
- High efficacy - up to 151 lm/W for enhanced energy savings
- Advanced controls options for asset tracking



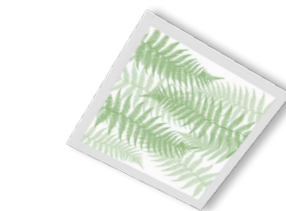
TROFFER KIT (LANCE)

- Architecturally designed volumetric troffer retrofit kit
- High efficacy - up to 151 lm/W for enhanced energy savings
- Advanced controls options for asset tracking



GRID FRAME HIGH BAY (GH)

- High performance recessed high bay
- Various lens options for aesthetics
- 2x2' & 2x4' sizes



ENVI DESIGNER PANEL

- Lumen and CCT Selectable
- Various Lens Options
- Acrylic Drop Lens
- Acoustic Drop Panels



ENDEAVOUR HIGH BAY (EDV 2.0)

- Sleek curved polycarbonate end caps for polished look
- Uplight option to enhance full room illumination
- White & black housing options



OFFICE & ADMINISTRATION

Office lighting in hospitality settings must be welcoming but highly functional. While these areas are not customer-facing, they are still places where employees must feel both productive and comfortable. A blend of task lighting and ambient lighting creates office areas that stimulate work but do not diverge from the hotel's identity.

TRACK FAMILY SOLUTION



NOVA

SOL

RBIT

ATOM

Select Drive

Select Kelvin



A track lighting family centered around meeting your hospitality lighting needs. With field-adjustable lumen outputs, multiple mounting options, a variety of beam angles, and an extensive suite of accessories and lenses, you can be sure that your application is getting the focus it deserves. GREEN CREATIVE also offers its own track system for your new construction or remodel applications.



T8 LAMPS

- Options for plug and play ballast install, line voltage wiring, or external driver, are available
- Options for replacing most linear fluorescent lamps
- Wide light emitting area



T5 LAMPS

- Meets NSF requirements, plastic construction will not shatter
- Options for plug and play ballast install, line voltage wiring, or external driver, are available



PL LAMPS

- Replacements for fluorescent lamps from 7W - 42W
- Bases compatible with most fluorescent pin sockets
- Options for plug and play ballast install or wiring to line voltage



SELECTFIT G2

- 4", 6", 8" & 9.5" form factors
- Field adjustable 3 level lumen outputs and 5 CCTs
- DualDim for both 120V TRIAC/ELV and 0-10V dimming



SPECFIT

- 4", 6", 8" & 9.5" form factors
- Adjustable lumen output
- TRUE CHROMA version available



PXCYL

- 2", 4", 6", 8" sizes
- Comprehensive mounting options
- Industry leading lumen selectable output up to 5,000lm



ENVI DESIGNER PANEL

- Lumen and CCT Selectable
- Various Lens Options
- Acrylic Drop Lens
- Acoustic Drop Panels



VOLUMETRIC TROFFER (VOLA)

- Architecturally designed volumetric troffer
- High efficacy - up to 151 lm/W for enhanced energy savings
- Advanced controls options for asset tracking



QWIKLINK STRIP (QL)

- Versatile specification grade linear strip solution
- Ceiling, wall, pendant or suspension mounting option
- 2' & 4' lengths

STORAGE

Though less glamorous than other parts of a hotel, supply closets and equipment rooms still deserve smart lighting. Illumination here should be simple, bright, and robust. Storage areas may go unused most of the time, so luminaires with integrated motion sensors are often used.



QWIKLINK STRIP (QL)



Select Drive

Select Kelvin



QWIKLINK's standard field selectable Lumen and CCT features provide complete flexibility at your fingertips. Utilize its toolless QWIKLINK connector for uninterrupted, continuous row illumination up to 64 linear feet with only one electrical power entry. These features drastically reduce installation time and increase project efficiencies. With these adaptable and robust features, QWIKLINK is the optimal choice for any interior linear environment.



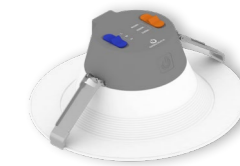
PL LAMPS

- Replacements for fluorescent lamps from 7W - 42W
- Bases compatible with most fluorescent pin sockets
- Options for plug and play ballast install or wiring to line voltage



T8 LAMPS

- Options for plug and play ballast install, line voltage wiring, or external driver, are available
- Options for replacing most linear fluorescent lamps
- Wide light emitting area



INNOFIT PLUS

- 4", 6", 8" & 9.5" form factors
- Field adjustable 3 level lumen outputs and 3 CCTs
- Wet, IC, and Air-tight rated



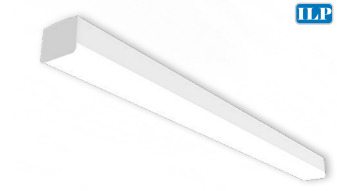
CLICK WITH SENSOR

- Integrated PIR sensor
- Wet, IC & Air-tight rated
- Nonconductive polycarbonate trim



ENDEAVOUR HIGH BAY (EDV 2.0)

- Sleek curved polycarbonate end caps for polished look
- Uplight option to enhance full room illumination
- White & black housing options



DISCOVERY LINEAR STRIP (DSC)

- Highly configurable spec grade strip
- No visible fasteners providing a smooth uninterrupted design
- Standard Efficacy (SE) and High Efficacy (HE) lumen packages
- 2', 4' & 8' lengths available



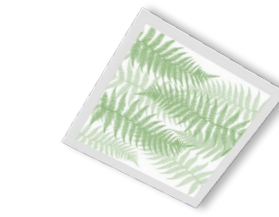
UTILITY WRAP (SWR)

- Sleek modern design
- Suitable for continuous run applications
- 2ft and 4ft configurations



CURVED WRAP (SQ)

- Sleek curved profile wrap fixture
- Suitable for installing in continuous runs
- 2', 4' & 8' lengths



ENVI DESIGNER PANEL

- Lumen and CCT Selectable
- Various Lens Options
- Acrylic Drop Lens
- Acoustic Drop Panels



EXTERIOR LIGHTING

Outdoor lighting in hospitality facilities includes illumination of entrances, facades, and pathways. Designers should pay attention to IP ratings and choose luminaires which provide even light distribution for creating safe and welcoming atmosphere as well as accent the landscaping and architecture.

SKYLINE AREA & FLOOD (SA/SF)



The Skyline's sleek aesthetic makes it perfectly-suited for hospitality area & flood applications. Designed for both new construction and retrofit, the Skyline provides a one-for-one solution for replacing legacy metal halide or high pressure sodium luminaires. Priced for payback, it's cost effective die-cast aluminum housings comes in 2-sizes and DLC Premium efficacies, making it the best choice for low acquisition cost and high energy savings. The highly configurable Skyline provides superior illumination, unparalleled uniformity, reliability, and ease of installation, exceeding most application requirements.



VIEWPOINT AREA LIGHT (VA)

- Lumen Selectable with 14,000 - 42,000 lumens
- T3, T4, T5 Rotatable Optical Distributions
- PIR Occupancy, Photocell, & Bi-Level Dimming sensors available
- Adjustable Pole(Rd/Sq), Wall, or Slip-fitter mounting options



VIEWPOINT FLOOD (VF)

- 5 luminaire scales delivering 2,000-40,000 lumens
- CCT & lumen selectable (up to 14k lumens)
- Knuckle, Trunnion, Slip-Fitter, & Pole Mount Options



FULL CUTOFF WALL PACK (WPC)

- 2 sizes with multiple optical distributions
- Legacy aesthetic with next generation performance
- Sensor & wireless controls ready



SLIM WALL PACK (SWP)

- Fully adjustable with 5 light levels & 2 sizes
- CCT Selectable (std), Lumen Selectable with FAO Device
- Battery Backup & PIR Sensor Options



OW SERIES WALL PACK (OW)

- CCT & Lumen Selectable
- 3 sizes with up to 16,000 Lumens @148 LPW
- Integral battery backups available



SQUARE CANOPY (CP)

- 4 Lumen packages delivering 3,000 - 9,000 Lumens
- White or bronze finish
- Microwave sensor ready



UFO PARKING / CANOPY (UFO)

- Visually comfortable illumination
- 10% uplight reduces cave effect
- Sensor & wireless controls ready



BOLLARDS (BxT)

- 6" flat or dome top bollards
- Value driven, quick ROI
- Multiple beam patterns



POLES & BRACKETS

- Straight round or square steel poles up to 40'
- Multiple bullhorn, wall, and wood pole mounting options
- Adapters for every site scenario



CONTROLS

The ability to control your light makes all the difference. Quality dimming solutions allow operators to set the mood of a presentation or activity, or to save energy during daytime hours. Smart controls and occupancy sensors can further reduce electricity consumption, resulting in massive savings over the long term. We provide various integrated control solutions that meet building codes compliance for ASHRAE 90:1, Title 24, and similar standards.

CONTROLS SOLUTIONS



- Economical grouping solution
- Occupancy & daylight functions
- Programmable with phone app
- Wireless scalable design
- No gateway required



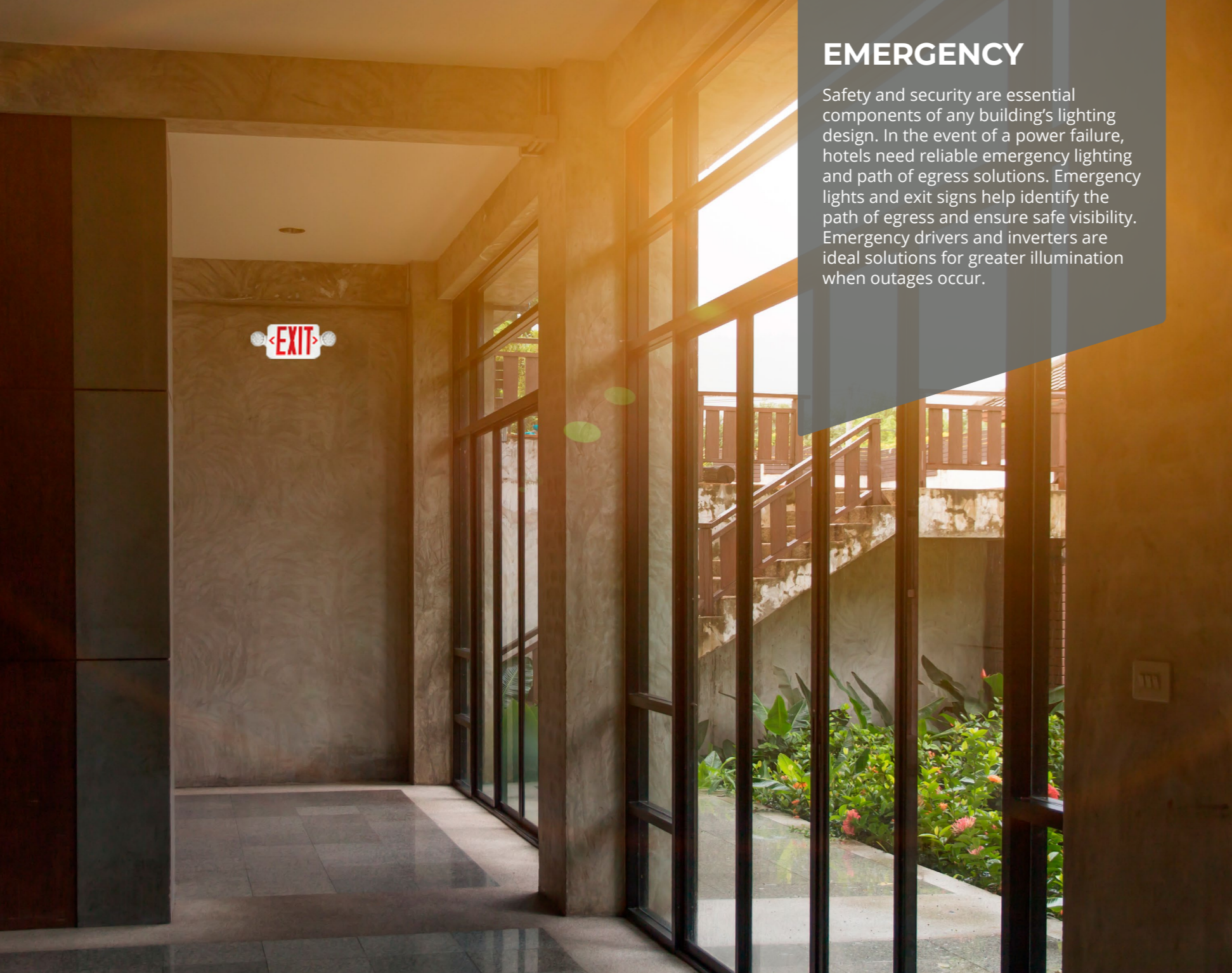
- 2.4 GHz Wireless Mesh Network
- Occupancy, daylight, zone, scene, & scheduling control with optional energy monitoring
- Secure wireless scalable design
- Gateway for enhanced functionality



- Occupancy & RF solutions
- Occupancy, daylight, & demand response capabilities
- Wireless scalable design
- Vive HUB for enhanced functionality



Athena wireless node is a radio frequency (RF) device that enables simple, digital control of individual light fixtures in an Athena control system. Enables individual wireless control of each fixture in an Athena control system. Accommodates zone and control changes without rewiring. All drivers on the link are controlled as a single zone. Provided with factory installed components only. Lutron Athena system provided by others.



EMERGENCY

Safety and security are essential components of any building's lighting design. In the event of a power failure, hotels need reliable emergency lighting and path of egress solutions. Emergency lights and exit signs help identify the path of egress and ensure safe visibility. Emergency drivers and inverters are ideal solutions for greater illumination when outages occur.

EMERGENCY SOLUTIONS

ILP EXEM



- Full line of signs and lights for code compliance
- All products feature thermoplastic housings and LED lighting heads
- Standard and High Output available for varying mounting heights and spacings
- DOE and CEC registered

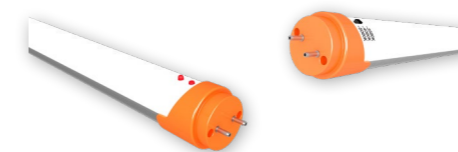
GREEN CREATIVE



GREENCREATIVE

- Multiple wattage selections from 5W to 24W
- Specifically designed to work with a wide variety of GREEN CREATIVE's lamps and fixtures
- Meets or exceeds all NEC and life safety code emergency lighting requirements
- CA Title 20 compliant version available
- Additional accessories options for various mounting methods

GREEN CREATIVE



GREENCREATIVE

- Industry's first CCT select emergency T8
- Constant power output in emergency mode for a minimum of 90 minutes
- Field selectable three color temperatures
- Continuous self-test design to ensure tube safety

FULHAM



- Fulham's HotSpot 10.7W and 17W constant power emergency drivers
- Bring field-installable backup power to LED luminaires
- All standard models are now CA Title 20 compliant

HOSPITALITY APPLICATION BROCHURE



GREENCREATIVE

www.greencreative.com



www.ilp-inc.com

An ILLUMUS Brand

www.ILLUMUS.com