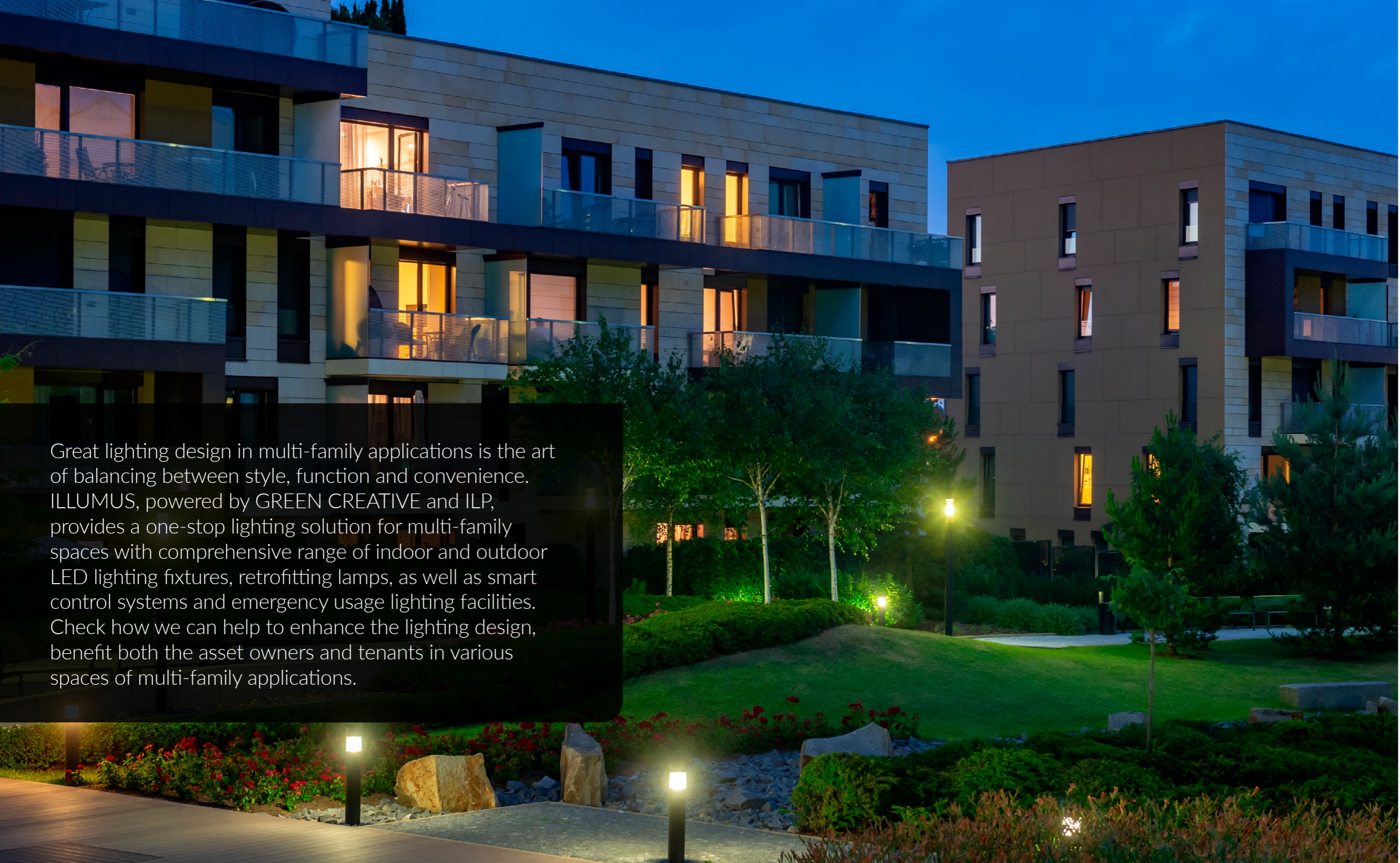




# MULTIFAMILY APPLICATION BROCHURE



Great lighting design in multi-family applications is the art of balancing between style, function and convenience. ILLUMUS, powered by GREEN CREATIVE and ILP, provides a one-stop lighting solution for multi-family spaces with comprehensive range of indoor and outdoor LED lighting fixtures, retrofitting lamps, as well as smart control systems and emergency usage lighting facilities. Check how we can help to enhance the lighting design, benefit both the asset owners and tenants in various spaces of multi-family applications.

# Spaces & Applications

## Interior Lobby & Common Spaces

Lobby & Entrance	1-2
Gym	3-4

## Main Living Spaces

Living Room & Bedroom	5-6
Bathroom & Laundry	7-8
Kitchen & Dining Area	9-10
Closet & Dressing Room	11-12
Home Office	13-14

## Stairwell & Hallway

Corridor & Stairwell	15-16
Exit & Emergency	17-18

## Exterior Area & Parking

Pathway & Parking Lot	19-20
-----------------------	-------

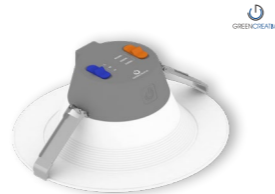


Lobby



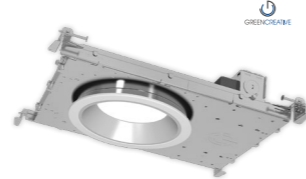
**SELECTFIT G2**

- 4", 6", 8" & 9.5" form factors
- Field adjustable 3 level lumen outputs and 5 CCTs
- DualDim for both 120V TRIAC/ELV and 0-10V dimming



**INNOFIT PLUS**

- 4", 6", 8" & 9.5" form factors
- Field adjustable 3 level lumen outputs and 3 CCTs
- Wet, IC, and Air-tight rated



**NYX**

- 4" & 6" sizes
- Field adjustable lumen and CCTs
- DualDim for both 120V Triac/ELV and 0-10V dimming



Good lighting in these areas should create a feeling of belonging and security. Lighting can also be used to highlight paths and guide directions.

Entrance



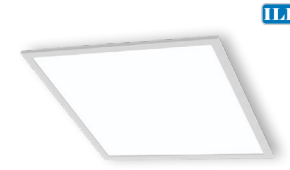
**VOLUMETRIC TROFFER (VOLA)**

- Architecturally designed volumetric troffer
- High efficacy - up to 151 lm/W for enhanced energy savings
- Advanced controls options for asset tracking



**VOLUMETRIC RETROFIT KIT (LANCE)**

- Architecturally designed volumetric troffer retrofit kit
- High efficacy - up to 151 lm/W for enhanced energy savings
- Advanced controls options for asset tracking



**BACK LIT FLAT PANEL (VPAN SELECT)**

- Lumen selectable output
- Three selectable CCTs
- Low profile design
- 1x4', 2x2' & 2x4' sizes



Solutions in these spaces need to distribute light evenly across the floor to enhance visibility and comfort. Efficient general lighting can energize workout areas. Atmospheric lighting can create a sense of calm and warmth.

Gym



LLP

**ENDEAVOUR HIGH BAY (EDV 2.0)**

- Sleek curved polycarbonate end caps for polished look
- Uplight option to enhance full room illumination
- White & black housing options



LLP

**VOLUMETRIC RETROFIT KIT (LANCE)**

- Architecturally designed volumetric troffer retrofit kit
- High efficacy - up to 151 lm/W for enhanced energy savings
- Advanced controls options for asset tracking



LLP

**BACK LIT FLAT PANEL (VPAN SELECT)**

- Lumen selectable output
- Three selectable CCTs
- Low profile design
- 1x4', 2x2' & 2x4' sizes



GREENFRAME

**T8 LAMPS**

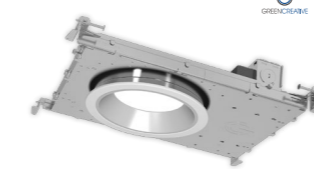
- Options for plug and play ballast install, line voltage wiring, or external driver, are available
- Options for replacing most linear fluorescent lamps
- Wide light emitting area



GREENFRAME

**SELECTFIT G2**

- 4", 6", 8" & 9.5" form factors
- Field adjustable 3 level lumen outputs and 5 CCTs
- DualDim for both 120V TRIAC/ELV and 0-10V dimming



GREENFRAME

**NYX**

- 4" & 6" sizes
- Field adjustable lumen and CCTs
- DualDim for both 120V Triac/ELV and 0-10V dimming



Gym



Bedroom



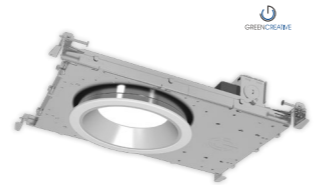
**MULTIFIT**

- Flat, Cloud, and Gimbal options
- 4", 6" and 8" sizes
- DualDim for both 120V Triac/ELV and 0-10V dimming



**MINIFIT**

- 1" & 2" 360° rotation gimbals
- 2" module with extensive trim selections
- Perfect for shallow plenum construction



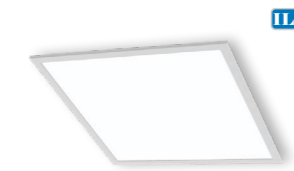
**NYX**

- 4" & 6" sizes
- Field adjustable lumen and CCTs
- DualDim for both 120V Triac/ELV and 0-10V dimming



**ENVI DESIGNER PANEL**

- Lumen and CCT Selectable
- Various Lens Options
- Acrylic Drop Lens
- Acoustic Drop Panels



**BACK LIT FLAT PANEL (VPAN SELECT)**

- Lumen selectable output
- Three selectable CCTs
- Low profile design
- 1x4', 2x2' & 2x4' sizes



**QWIKLINK STRIP (QL)**

- Versatile specification grade linear strip solution
- Ceiling, wall, pendant or suspension mounting option
- 2' & 4' lengths



Living Room

Lighting in living spaces should generate feelings of relaxation, wellbeing, and privacy. Highly flexible and dimmable lighting options allow for creating right ambience and atmosphere for various activities and moods.



Whether you choose ambient light, accent light, or a mixture of both, these areas should be well-lit and hygienic. High-quality occupancy sensors can also help to save on energy bills.

Bathroom



**T8 LAMPS**

- Options for plug and play ballast install, line voltage wiring, or external driver, are available
- Options for replacing most linear fluorescent lamps
- Wide light emitting area



**SLIM STRIP (SS 3.0)**

- 1.9" Width
- Lumen and CCT Selectable
- 2,000 to 12,000 Lumens
- 2', 4', & 8' Sizes



**BACK LIT FLAT PANEL (VPAN SELECT)**

- Lumen selectable output
- Three selectable CCTs
- Low profile design
- 1x4', 2x2' & 2x4' sizes



**CLICK WITH SENSOR**

- Integrated PIR sensor
- Wet, IC & Air-tight rated
- Nonconductive polycarbonate trim



**3N1**

- 5", 7", 9" and 12" surface mount
- Adjustable CCT
- Direct ceiling, recessed housing & J-Box mounting options



**CLICK 6"**

- Innovative CLICK design
- Fixture depth is just 1" below the ceiling
- Wet, IC & Air-tight rated



Laundry



Dining Area



**MULTIFIT**

- Flat, Cloud, and Gimbal options
- 4", 6" and 8" sizes
- DualDim for both 120V Triac/ELV and 0-10V dimming



**PXCYL**

- 2", 4", 6", 8" sizes
- Comprehensive mounting options
- Industry leading lumen selectable output up to 5,000lm



**DECO LARGE FILAMENTS**

- Unique and abundant form factors
- Installed into a light fixture or simply used alone
- Optional golden or black E26 pendant light kit



**ENVI DESIGNER PANEL**

- Lumen and CCT Selectable
- Various Lens Options
- Acrylic Drop Lens
- Acoustic Drop Panels



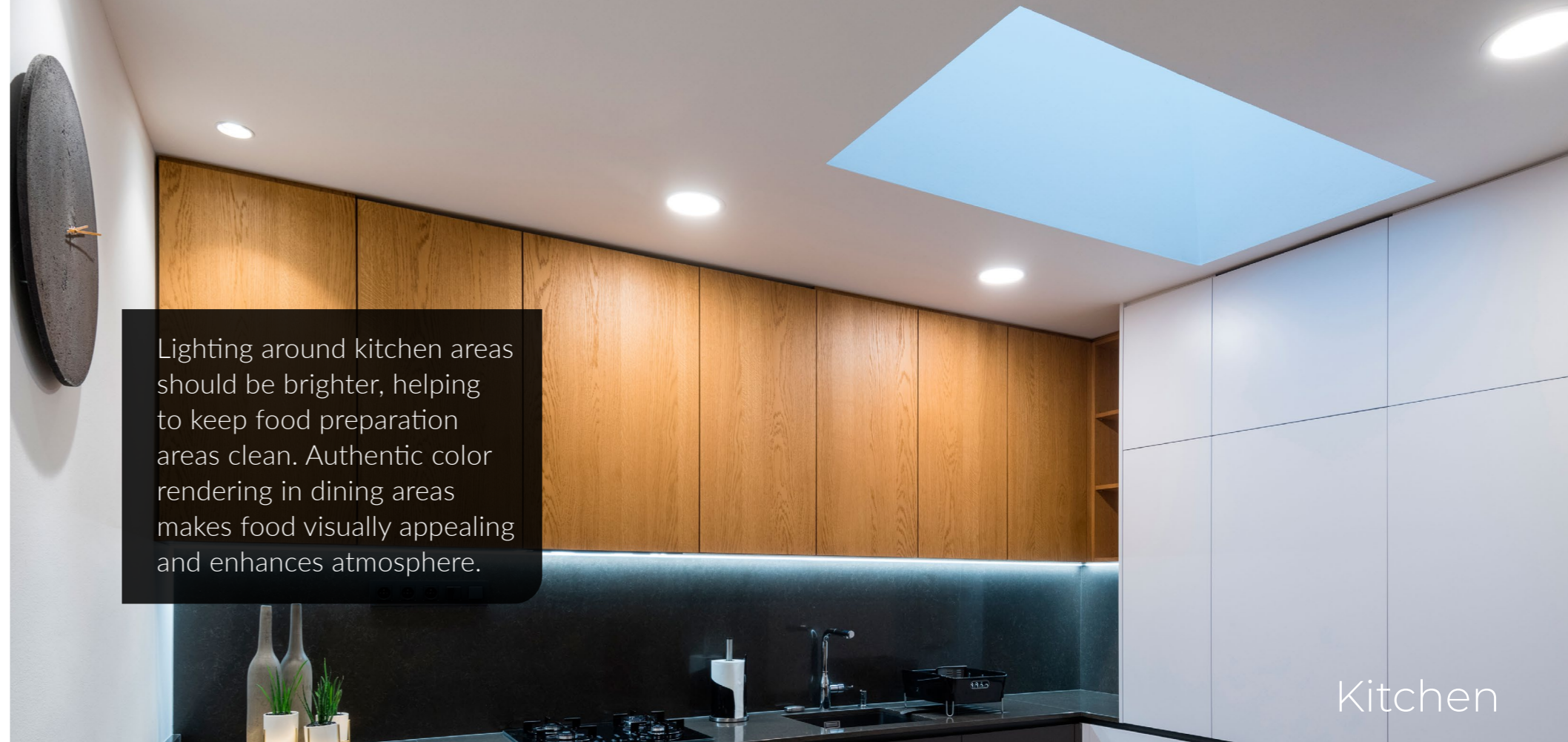
**BACK LIT FLAT PANEL (VPAN SELECT)**

- Lumen selectable output
- Three selectable CCTs
- Low profile design
- 1x4', 2x2' & 2x4' sizes



**SLIM STRIP (SS 3.0)**

- 1.9" Width
- Lumen and CCT Selectable
- 2,000 to 12,000 Lumens
- 2', 4', & 8' Sizes



Kitchen

Lighting around kitchen areas should be brighter, helping to keep food preparation areas clean. Authentic color rendering in dining areas makes food visually appealing and enhances atmosphere.



Adequate light output, suitable color temperature, and accurate color rendering ensure revealing all the details and in true color. Lighting design should eliminate shadows and cut down on glare from mirrors in these areas.

Dressing Room



**CLICK WITH SENSOR**

- Integrated PIR sensor
- Wet, IC & Air-tight rated
- Nonconductive polycarbonate trim



**REFINE MR LAMPS**

- Suitable to replace up to a 75W halogen MR lamp
- Powered by TRUE CHROMA technology (95 CRI min)
- Smooth dimming with most electronic low-voltage dimming controls



**PXYCL**

- 2", 4", 6", 8" sizes
- Comprehensive mounting options
- Industry leading lumen selectable output up to 5,000lm



Closet



**LOW PROFILE STRIP (FZ)**

- Highly versatile and efficient strip fixture
- Pendant, ceiling and continuous row mounting
- 2', 4' & 8' lengths



**QWIKLINK STRIP (QL)**

- Versatile specification grade linear strip solution
- Ceiling, wall, pendant or suspension mounting option
- 2' & 4' lengths



**BACK LIT FLAT PANEL (VPAN SELECT)**

- Lumen selectable output
- Three selectable CCTs
- Low profile design
- 1x4', 2x2' & 2x4' sizes





Home Office



**ORBIT TRACK**

- Specification grade & performance design
- Spot, narrow & flood interchangeable optics
- Industry leading lumen selectable output range



**REFINE MR LAMPS**

- Suitable to replace up to a 75W halogen MR lamp
- Powered by TRUE CHROMA technology (95 CRI min)
- Smooth dimming with most electronic low-voltage dimming controls



**PXCYL**

- 2", 4", 6", 8" sizes
- Comprehensive mounting options
- Industry leading lumen selectable output up to 5,000lm



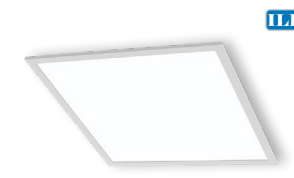
**LOW PROFILE STRIP (FZ)**

- Highly versatile and efficient strip fixture
- Pendant, ceiling and continuous row mounting
- 2', 4' & 8' lengths



**QWIKLINK STRIP (QL)**

- Versatile specification grade linear strip solution
- Ceiling, wall, pendant or suspension mounting option
- 2' & 4' lengths



**BACK LIT FLAT PANEL (VPAN SELECT)**

- Lumen selectable output
- Three selectable CCTs
- Low profile design
- 1x4', 2x2' & 2x4' sizes



Home Office

In addition to overhead general lighting, extra task lighting is needed in working area for higher level of readability and focusing. A combination of task lighting and ambient lighting ensures that workspaces are functional and sensible.



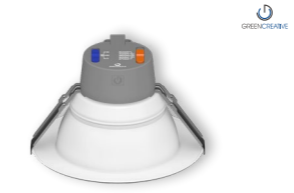
Lighting in the corridor and stairwell areas in multi-family buildings need to be sufficient and cozy for creating a safe and welcoming atmosphere. Luminaires equipped with occupancy sensor options will also increase energy bill savings.

Corridor



**T8 LAMPS**

- Options for plug and play ballast install, line voltage wiring, or external driver, are available
- Options for replacing most linear fluorescent lamps
- Wide light emitting area



**SELECTFIT G2**

- 4", 6", 8" & 9.5" form factors
- Field adjustable 3 level lumen outputs and 5 CCTs
- DualDim for both 120V TRIAC/ELV and 0-10V dimming



LLP

**UTILITY WRAP (SWR)**

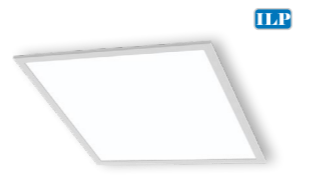
- Sleek modern design
- Suitable for continuous run applications
- 2ft and 4ft configurations



LLP

**CAVERN STAIRWELL (CV)**

- Robust design
- High / low user selectable bi-dimming options
- Sensor and emergency options



LLP

**BACK LIT FLAT PANEL (VPAN SELECT)**

- Lumen selectable output
- Three selectable CCTs
- Low profile design
- 1x4', 2x2' & 2x4' sizes



GREENCREAK

**PXCYL**

- 2", 4", 6", 8" sizes
- Comprehensive mounting options
- Industry leading lumen selectable output up to 5,000lm



Stairwell



Exit

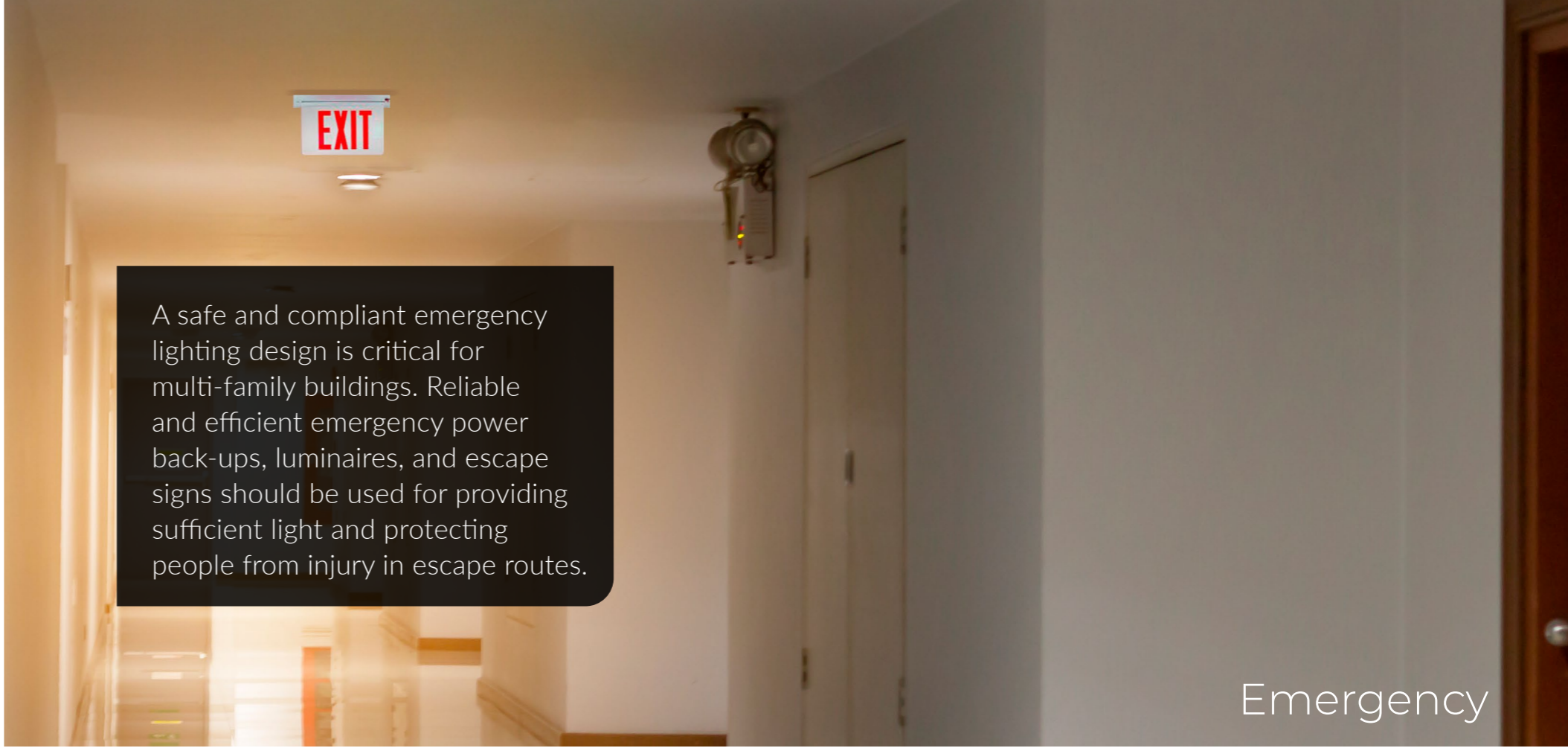


Select Kelvin

- Designed with integrated emergency battery back-up
- SelectKelvin switch for CCT adjustment
- Real time self-test design will perform continuous testing
- All-in-one solution for both general lighting and emergency lighting



- Multiple wattage selections from 5W to 24W
- Specifically designed to work with a wide variety of GREEN CREATIVE's lamps and fixtures
- Meets or exceeds all NEC and life safety code emergency lighting requirements
- CA Title 20 compliant version available
- Additional accessories options for various mounting methods



A safe and compliant emergency lighting design is critical for multi-family buildings. Reliable and efficient emergency power back-ups, luminaires, and escape signs should be used for providing sufficient light and protecting people from injury in escape routes.

Emergency



- Full line of signs and lights for code compliance
- All products feature thermoplastic housings and LED lighting heads
- Standard and High Output available for varying mounting heights and spacings
- DOE and CEC registered



- Fulham's HotSpot 10.7W, 13.7W and 17W constant power emergency drivers
- Bring field-installable backup power to LED luminaires
- All standard models are now CA Title 20 compliant



Outdoor lighting in multi-family environment includes illumination of pathways, recreational areas, and parking lots, etc. Robust and efficient luminaires needed to provide even light distribution for creating safe atmosphere as well as accent the landscaping and facilities.

Pathway



ILP

- SKYLINE AREA & FLOOD (SA/SF)**
- Specification Grade die-cast aluminum housing
  - 5 Optical Distributions with Highest Uniformity in their product class
  - 9 Different Optional Mounting Methods



ILP

- SLIM WALL PACK (SWP)**
- Fully adjustable with 5 light levels & 2 sizes
  - CCT Selectable (std), Lumen Selectable with FAO Device
  - Battery Backup & PIR Sensor Options
  - Adjustable Pole(Rd/Sq), Wall, or Slip-fitter mounting options



ILP

- Viewpoint Flood (VF)**
- 5 luminaire scales delivering 2,000-40,000 lumens
  - CCT & lumen selectable (up to 14k lumens)
  - Knuckle, Trunnion, Slip-Fitter, & Pole Mount Options



ILP

- UFO Parking / Canopy (UFO)**
- Visually comfortable illumination
  - 10% uplight reduces cave effect
  - Sensor & wireless controls ready



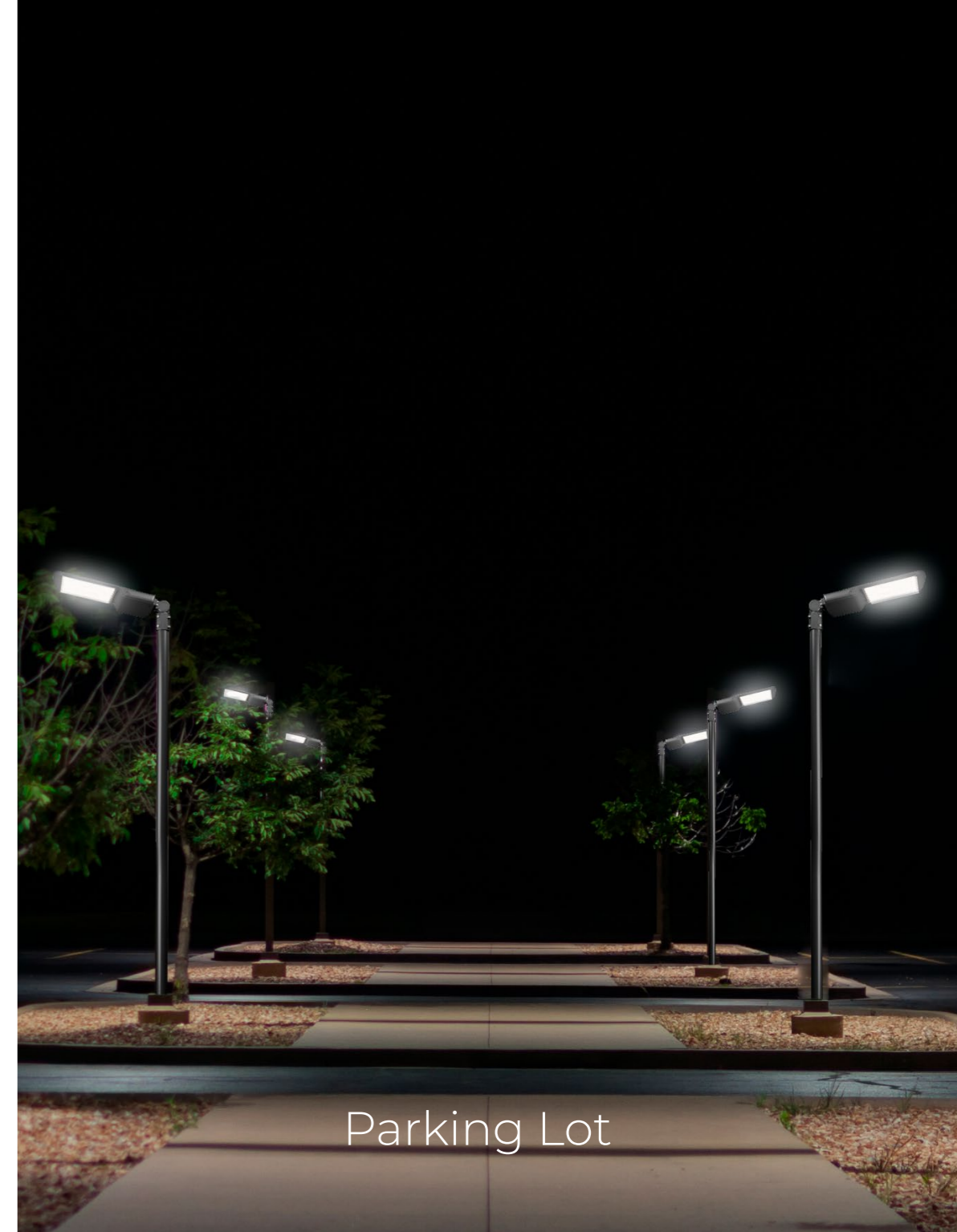
ILP

- BOLLARDS (BxT)**
- 6" flat or dome top bollards
  - Value driven, quick ROI
  - Multiple beam patterns



ILP

- SQUARE CANOPY(CP)**
- 4 Lumen packages delivering 3,000 - 9,000 Lumens
  - White or bronze finish
  - Microwave sensor ready



Parking Lot

# MULTIFAMILY APPLICATION BROCHURE



GREENCREATIVE

[www.greencreative.com](http://www.greencreative.com)



[www.ilp-inc.com](http://www.ilp-inc.com)

An ILLUMUS Brand

[www.ILLUMUS.com](http://www.ILLUMUS.com)