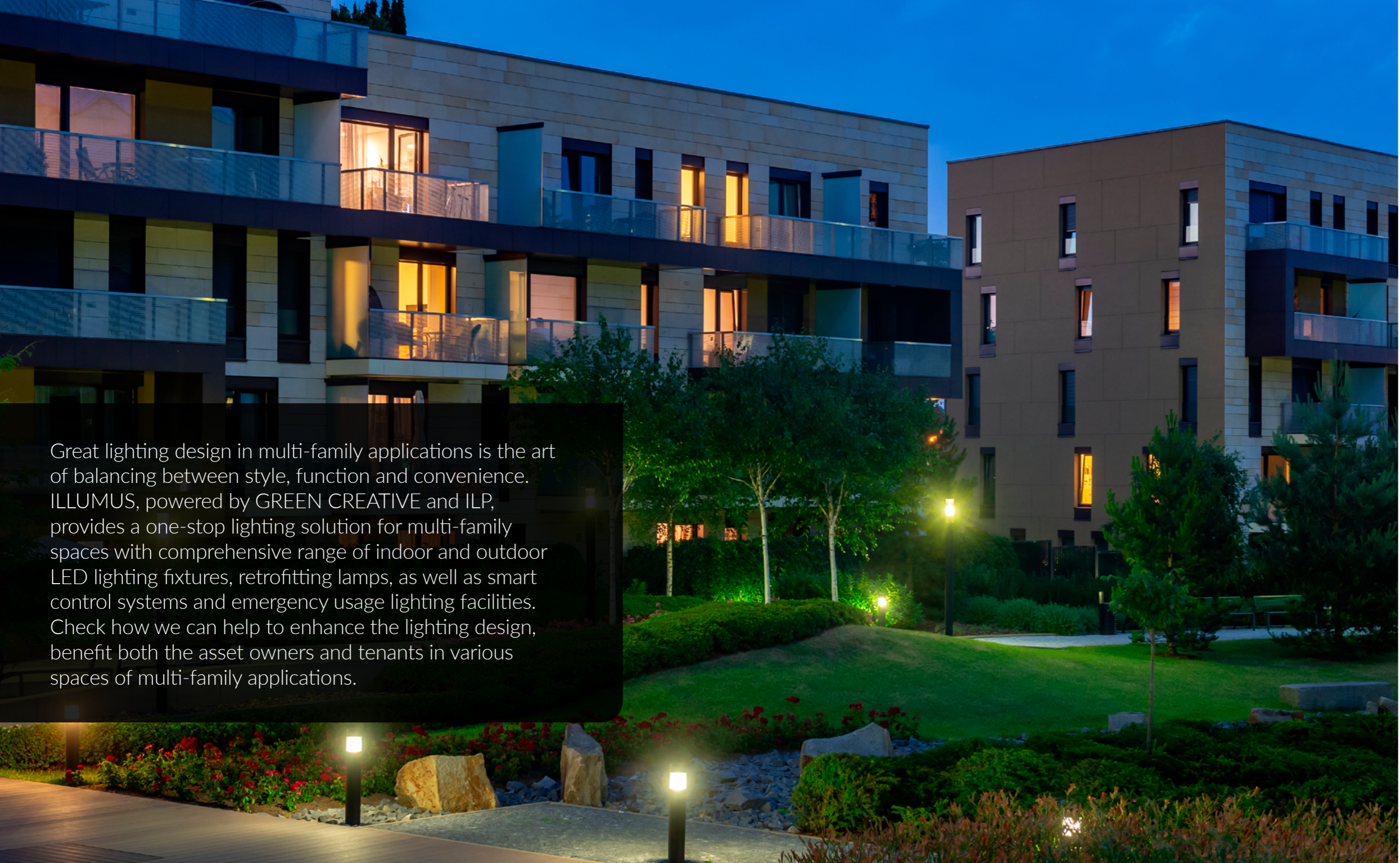




MULTIFAMILY APPLICATION BROCHURE



Great lighting design in multi-family applications is the art of balancing between style, function and convenience. ILLUMUS, powered by GREEN CREATIVE and ILP, provides a one-stop lighting solution for multi-family spaces with comprehensive range of indoor and outdoor LED lighting fixtures, retrofitting lamps, as well as smart control systems and emergency usage lighting facilities. Check how we can help to enhance the lighting design, benefit both the asset owners and tenants in various spaces of multi-family applications.

Spaces & Applications

Interior Lobby & Common Spaces

Lobby & Entrance	1-2
Gym	3-4

Main Living Spaces

Living Room & Bedroom	5-6
Bathroom & Laundry	7-8
Kitchen & Dining Area	9-10
Closet & Dressing Room	11-12
Home Office	13-14

Stairwell & Hallway

Corridor & Stairwell	15-16
Exit & Emergency	17-18

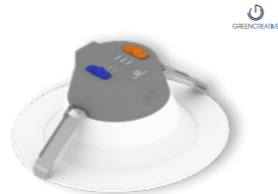
Exterior Area & Parking

Pathway & Parking Lot	19-20
-----------------------------	-------



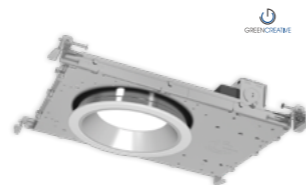
SELECTFIT G2

- 4", 6", 8" & 9.5" form factors
- Field adjustable 3 level lumen outputs and 5 CCTs
- DualDim for both 120V TRIAC/ELV and 0-10V dimming



INNOFIT PLUS

- 4", 6", 8" & 9.5" form factors
- Field adjustable 3 level lumen outputs and 3 CCTs
- Wet, IC, and Air-tight rated



NYX

- 4", 6" and 8" sizes
- Field adjustable lumen and CCTs
- DualDim for both 120V Triac/ELV and 0-10V dimming



Good lighting in these areas should create a feeling of belonging and security. Lighting can also be used to highlight paths and guide directions.



VOLUMETRIC TROFFER (VOLA)

- Architecturally designed volumetric troffer
- High efficacy - up to 151 lm/W for enhanced energy savings
- Advanced controls options for asset tracking



VOLUMETRIC RETROFIT KIT (LANCE)

- Architecturally designed volumetric troffer retrofit kit
- High efficacy - up to 151 lm/W for enhanced energy savings
- Advanced controls options for asset tracking



DISCOVERY NARROW TROFFER (DNT)

- Sleek, compact and modern troffer
- Slim 4" lens width
- Grid, Flange, Surface & Skylight mounting options
- 1,000 to 12,000 Lumens
- 2', 4', & 8' Sizes



Solutions in these spaces need to distribute light evenly across the floor to enhance visibility and comfort. Efficient general lighting can energize workout areas. Atmospheric lighting can create a sense of calm and warmth.

Gym



LLP

ENDEAVOUR HIGH BAY (EDV 2.0)

- Sleek curved polycarbonate end caps for polished look
- Uplight option to enhance full room illumination
- White & black housing options



LLP

VOLUMETRIC RETROFIT KIT (LANCE)

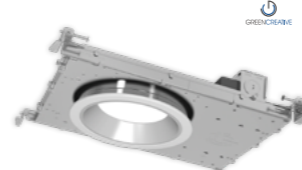
- Architecturally designed volumetric troffer retrofit kit
- High efficacy - up to 151 lm/W for enhanced energy savings
- Advanced controls options for asset tracking



LLP

BACK LIT FLAT PANEL (VPAN SELECT)

- Lumen selectable output
- Three selectable CCTs
- Low profile design
- 1x4', 2x2' & 2x4' sizes



GREENCREATIVE

NYX

- 4", 6" and 8" sizes
- Field adjustable lumen and CCTs
- DualDim for both 120V Triac/ELV and 0-10V dimming



GREENCREATIVE

T8 LAMPS

- Options for plug and play ballast install, line voltage wiring, or external driver, are available
- Options for replacing most linear fluorescent lamps
- Wide light emitting area



GREENCREATIVE

SELECTFIT G2

- 4", 6", 8" & 9.5" form factors
- Field adjustable 3 level lumen outputs and 5 CCTs
- DualDim for both 120V TRIAC/ELV and 0-10V dimming



Gym



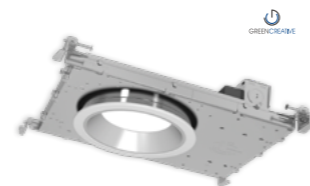
MULTIFIT

- Flat, Cloud, and Gimbal options
- 4", 6" and 8" sizes
- DualDim for both 120V Triac/ELV and 0-10V dimming



SLIMFIT SURFACE DOWNLIGHT

- 5", 7" and 9" sizes
- Deliver lumen output from 820lm to 1250lm for general lighting applications
- Five field selectable CCTs



NYX

- 4", 6" and 8" sizes
- Field adjustable lumen and CCTs
- DualDim for both 120V Triac/ELV and 0-10V dimming

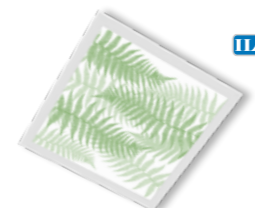


Lighting in living spaces should generate feelings of relaxation, wellbeing, and privacy. Highly flexible and dimmable lighting options allow for creating right ambience and atmosphere for various activities and moods.



CCT SELECT A LAMPS

- Suitable to replace 60W, 75W, 100W incandescent lamps
- Provides comfortable, diffused light
- Dimmable with forward and reverse phase controls
- Field selectable CCTs



ENVI DESIGNER PANEL

- Lumen and CCT Selectable
- Various Lens Options
- Acrylic Drop Lens
- Acoustic Drop Panels



BACK LIT FLAT PANEL (VPAN SELECT)

- Lumen selectable output
- Three selectable CCTs
- Low profile design
- 1x4', 2x2' & 2x4' sizes



DISCOVERY NARROW TROFFER (DNT)

- Sleek, compact and modern troffer
- Slim 4" lens width
- Grid, Flange, Surface & Skylight mounting options
- 1,000 to 12,000 Lumens
- 2', 4', & 8' Sizes



Whether you choose ambient light, accent light, or a mixture of both, these areas should be well-lit and hygienic. High-quality occupancy sensors can also help to save on energy bills.

Bathroom



- T8 LAMPS**
- Options for plug and play ballast install, line voltage wiring, or external driver, are available
 - Options for replacing most linear fluorescent lamps
 - Wide light emitting area



- SLIM STRIP (SS 3.0)**
- 1.9" Width
 - Lumen and CCT Selectable
 - 2,000 to 12,000 Lumens
 - 2', 4', & 8' Sizes



- BACK LIT FLAT PANEL (VPAN SELECT)**
- Lumen selectable output
 - Three selectable CCTs
 - Low profile design
 - 1x4', 2x2' & 2x4' sizes



- CCT SELECT BR LAMPS**
- Suitable to replace up to 85W incandescent lamps
 - Provides comfortable, diffused light
 - Dimmable with forward and reverse phase controls
 - Five field selectable CCTs



- SLIMFIT SURFACE DOWNLIGHT**
- 5", 7" and 9" sizes
 - Deliver lumen output from 820lm to 1250lm for general lighting applications
 - Five field selectable CCTs



- SLIMDISK**
- Only 7/8" below the ceiling
 - Up to 1,000lm light output with high CRI 90
 - Five field selectable CCTs



- MULTIFIT**
- Flat, Cloud, and Gimbal options
 - 4", 6" and 8" sizes
 - DualDim for both 120V Triac/ELV and 0-10V dimming



Laundry



Dining Area



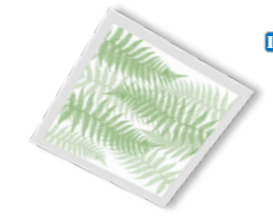
- MULTIFIT**
- Flat, Cloud, and Gimbal options
 - 4", 6" and 8" sizes
 - DualDim for both 120V Triac/ELV and 0-10V dimming



- PXCYL**
- 2", 4", 6", 8" sizes
 - Comprehensive mounting options
 - Industry leading lumen selectable output up to 5,000lm



- DECO LARGE FILAMENTS**
- Unique and abundant form factors
 - Installed into a light fixture or simply used alone
 - Optional golden or black E26 pendant light kit



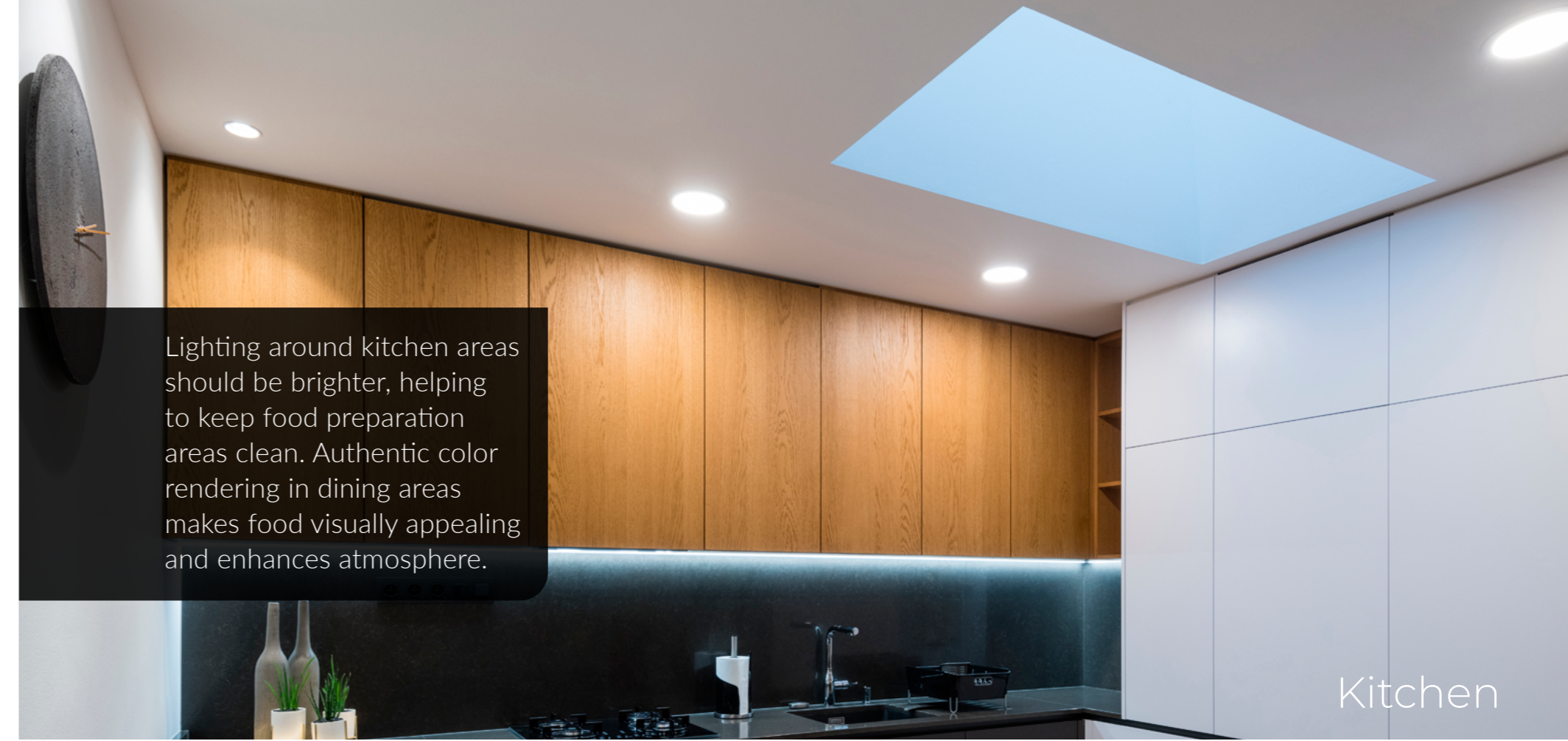
- ENVI DESIGNER PANEL**
- Lumen and CCT Selectable
 - Various Lens Options
 - Acrylic Drop Lens
 - Acoustic Drop Panels



- BACK LIT FLAT PANEL (VPAN SELECT)**
- Lumen selectable output
 - Three selectable CCTs
 - Low profile design
 - 1x4', 2x2' & 2x4' sizes



- SLIM STRIP (SS 3.0)**
- 1.9" Width
 - Lumen and CCT Selectable
 - 2,000 to 12,000 Lumens
 - 2', 4', & 8' Sizes



Lighting around kitchen areas should be brighter, helping to keep food preparation areas clean. Authentic color rendering in dining areas makes food visually appealing and enhances atmosphere.

Kitchen



Adequate light output, suitable color temperature, and accurate color rendering ensure revealing all the details and in true color. Lighting design should eliminate shadows and cut down on glare from mirrors in these areas.

Dressing Room



DISCOVERY LINEAR STRIP (DSC)

- Highly configurable spec grade strip
- No visible fasteners providing a smooth uninterrupted design
- Standard Efficacy (SE) and High Efficacy (HE) lumen packages
- 2', 4' & 8' lengths available



DISCOVERY NARROW TROFFER (DNT)

- Sleek, compact and modern troffer
- Slim 4" lens width
- Grid, Flange, Surface & Skylight mounting options
- 1,000 to 12,000 Lumens
- 2', 4', & 8' Sizes



BACK LIT FLAT PANEL (VPAN SELECT)

- Lumen selectable output
- Three selectable CCTs
- Low profile design
- 1x4', 2x2' & 2x4' sizes



SLIMFIT SURFACE DOWNLIGHT

- 5", 7" and 9" sizes
- Deliver lumen output from 820lm to 1250lm for general lighting applications
- Five field selectable CCTs



REFINE MR LAMPS

- Suitable to replace up to a 75W halogen MR lamp
- Powered by TRUE CHROMA technology (95 CRI min)
- Smooth dimming with most electronic low-voltage dimming controls



PXCYL

- 2", 4", 6", 8" sizes
- Comprehensive mounting options
- Industry leading lumen selectable output up to 5,000lm



Closet



Home Office



ORBIT TRACK

- Specification grade & performance design
- Spot, narrow & flood interchangeable optics
- Industry leading lumen selectable output range



REFINE MR LAMPS

- Suitable to replace up to a 75W halogen MR lamp
- Powered by TRUE CHROMA technology (95 CRI min)
- Smooth dimming with most electronic low-voltage dimming controls



PXCYL

- 2", 4", 6", 8" sizes
- Comprehensive mounting options
- Industry leading lumen selectable output up to 5,000lm



Home Office



DISCOVERY LINEAR STRIP (DSC)

- Highly configurable spec grade strip
- No visible fasteners providing a smooth uninterrupted design
- Standard Efficacy (SE) and High Efficacy (HE) lumen packages
- 2', 4' & 8' lengths available



DISCOVERY NARROW TROFFER (DNT)

- Sleek, compact and modern troffer
- Slim 4" lens width
- Grid, Flange, Surface & Skylight mounting options
- 1,000 to 12,000 Lumens
- 2', 4', & 8' Sizes



BACK LIT FLAT PANEL (VPAN SELECT)

- Lumen selectable output
- Three selectable CCTs
- Low profile design
- 1x4', 2x2' & 2x4' sizes



Lighting in the corridor and stairwell areas in multi-family buildings need to be sufficient and cozy for creating a safe and welcoming atmosphere. Luminaires equipped with occupancy sensor options will also increase energy bill savings.

Corridor



LLP

DISCOVERY NARROW TROFFER (DNT)

- Sleek, compact and modern troffer
- Slim 4" lens width
- Grid, Flange, Surface & Skylight mounting options
- 1,000 to 12,000 Lumens
- 2', 4', & 8' Sizes



LLP

CAVERN STAIRWELL (CV)

- Robust design
- High / low user selectable bi-dimming options
- Sensor and emergency options



LLP

BACK LIT FLAT PANEL (VPAN SELECT)

- Lumen selectable output
- Three selectable CCTs
- Low profile design
- 1x4', 2x2' & 2x4' sizes



GREENCREATIVE

T8 LAMPS

- Options for plug and play ballast install, line voltage wiring, or external driver, are available
- Options for replacing most linear fluorescent lamps
- Wide light emitting area



GREENCREATIVE

SELECTFIT G2

- 4", 6", 8" & 9.5" form factors
- Field adjustable 3 level lumen outputs and 5 CCTs
- DualDim for both 120V TRIAC/ELV and 0-10V dimming



GREENCREATIVE

PXCYL

- 2", 4", 6", 8" sizes
- Comprehensive mounting options
- Industry leading lumen selectable output up to 5,000lm



Stairwell



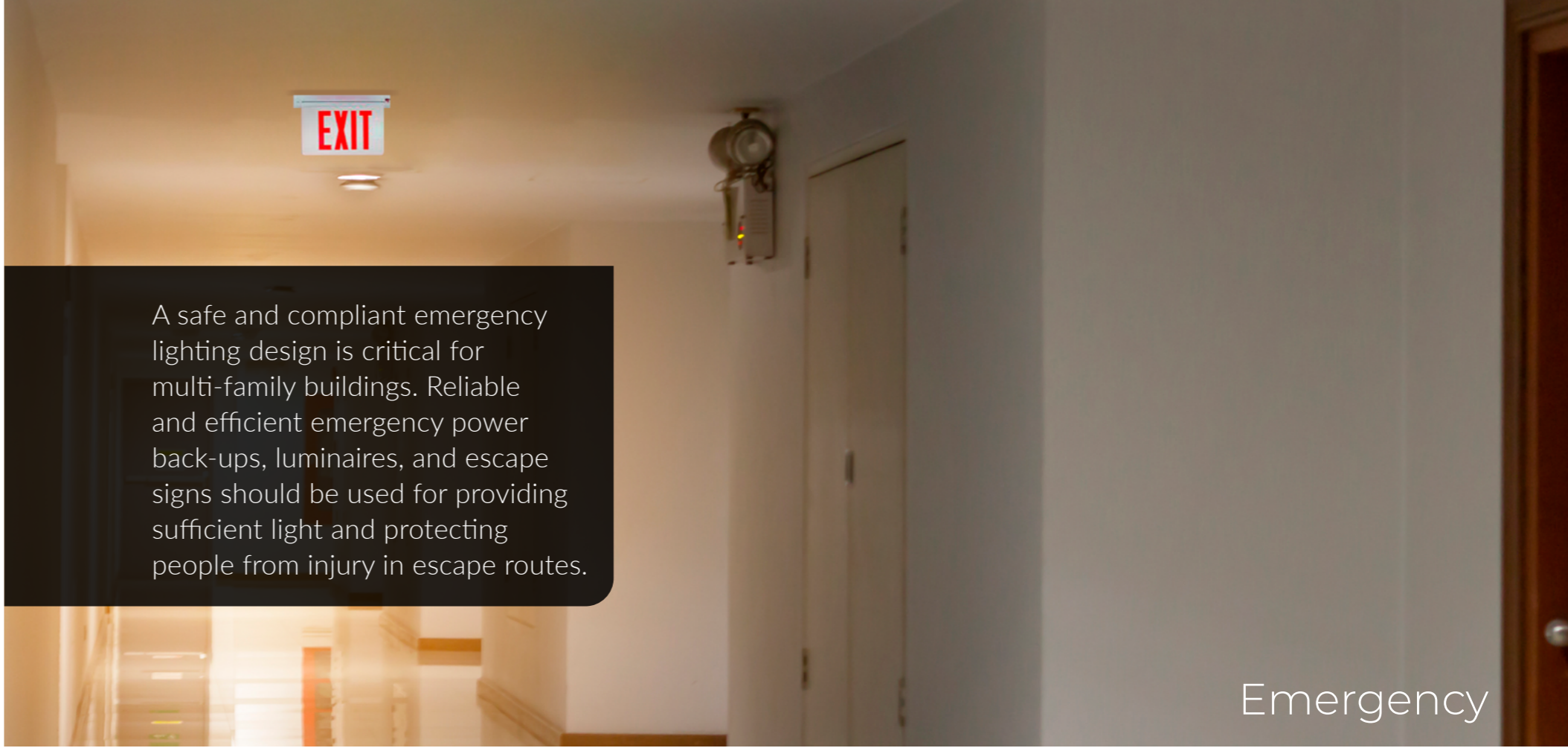
Exit



- Can be used as either UL 924 listed emergency device or DLC listed UL Type B T8
- SelectKelvin switch for CCT adjustment
- Real time self-test design will perform continuous testing
- All-in-one solution for both general lighting and emergency lighting



- Multiple wattage selections from 5W to 24W
- Specifically designed to work with a wide variety of GREEN CREATIVE's lamps and fixtures
- Meets or exceeds all NEC and life safety code emergency lighting requirements
- CA Title 20 compliant version available
- Additional accessories options for various mounting methods



A safe and compliant emergency lighting design is critical for multi-family buildings. Reliable and efficient emergency power back-ups, luminaires, and escape signs should be used for providing sufficient light and protecting people from injury in escape routes.

Emergency



- Full line of signs and lights for code compliance
- All products feature thermoplastic housings and LED lighting heads
- Standard and High Output available for varying mounting heights and spacings
- DOE and CEC registered

EMERGENCY LIGHTING SOLUTIONS



- Emergency Drivers & Inverters (including Self-Diagnostic, High Efficacy, and Title 20 Compliant models)
- Dimming Transfer Devices
- Generator Transfer Switches
- Fire Alarm-Activated Relays & Dry Contact Interfaces
- Solutions compatible across multiple brands and luminaire platforms



Outdoor lighting in multi-family environment includes illumination of pathways, recreational areas, and parking lots, etc. Robust and efficient luminaires needed to provide even light distribution for creating safe atmosphere as well as accent the landscaping and facilities.

Pathway



LLP

SKYLINE AREA & FLOOD (SA/SF)

- Specification Grade die-cast aluminum housing
- 5 Optical Distributions with Highest Uniformity in their product class
- 9 Different Optional Mounting Methods



LLP

SKYLINE WALL PACK

- Specification Grade die-cast aluminum housing
- Available in three sizes, delivering 1,000 to 24,000 lumens at up to 150 LPW
- Quick mount bracket enables hands-free wiring and simplifies installation



LLP

VIEWPOINT FLOOD (VF)

- 5 luminaire scales delivering 2,000-40,000 lumens
- CCT & lumen selectable (up to 14k lumens)
- Knuckle, Trunnion, Slip-Fitter, & Pole Mount Options



LLP

UFO Parking / Canopy (UFO)

- Visually comfortable illumination
- 10% uplight reduces cave effect
- Sensor & wireless controls ready



LLP

BOLLARDS (BxT)

- 8" flat or dome top bollards
- Value driven, quick ROI
- Multiple beam patterns



LLP

UNIFY WALL MOUNT

- Available in 3", 4" and 6" sizes
- Field selectable power output levels and CCTs
- Four different beam options
- Can be configured for direct-indirect, direct-only, or indirect-only lighting



Parking Lot

MULTIFAMILY APPLICATION BROCHURE



GREENCREATIVE

www.greencreative.com



www.ilp-inc.com

An ILLUMUS Brand

www.ILLUMUS.com