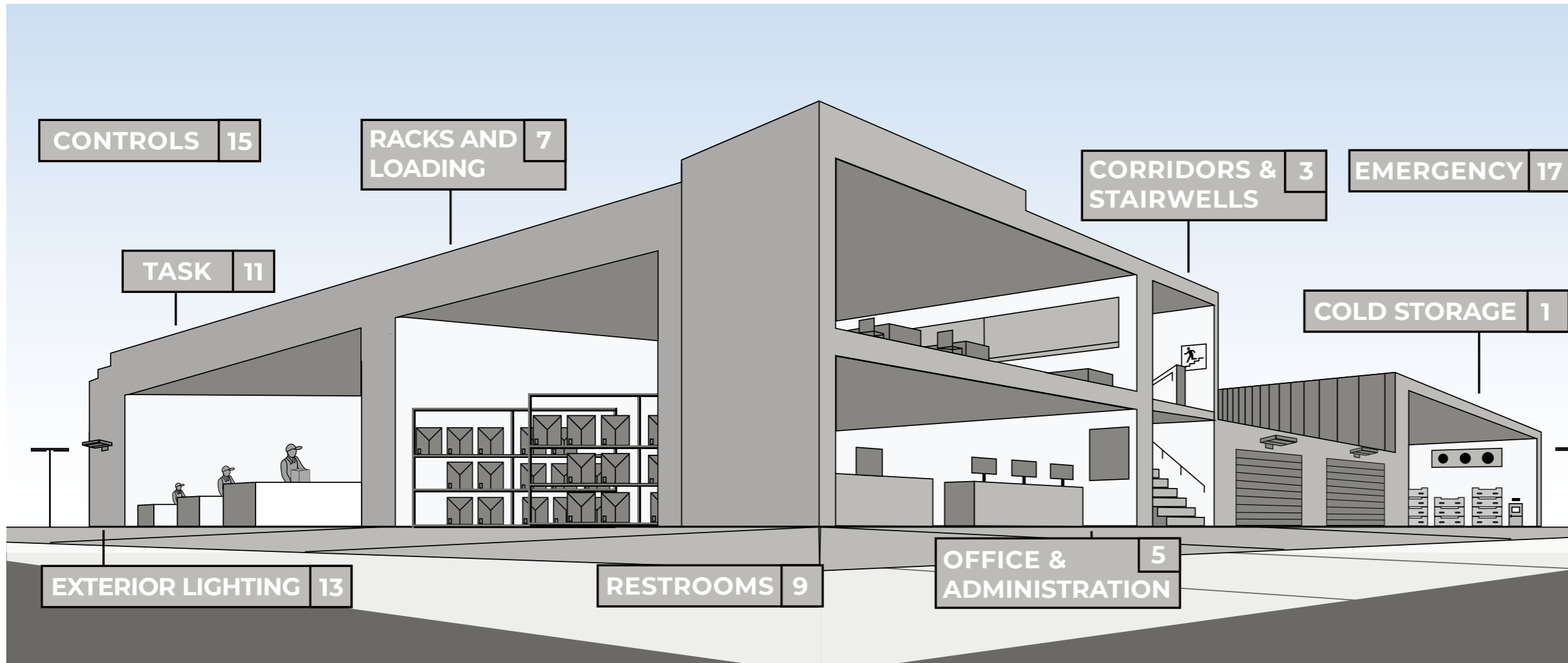




# WAREHOUSE & DISTRIBUTION APPLICATION BROCHURE

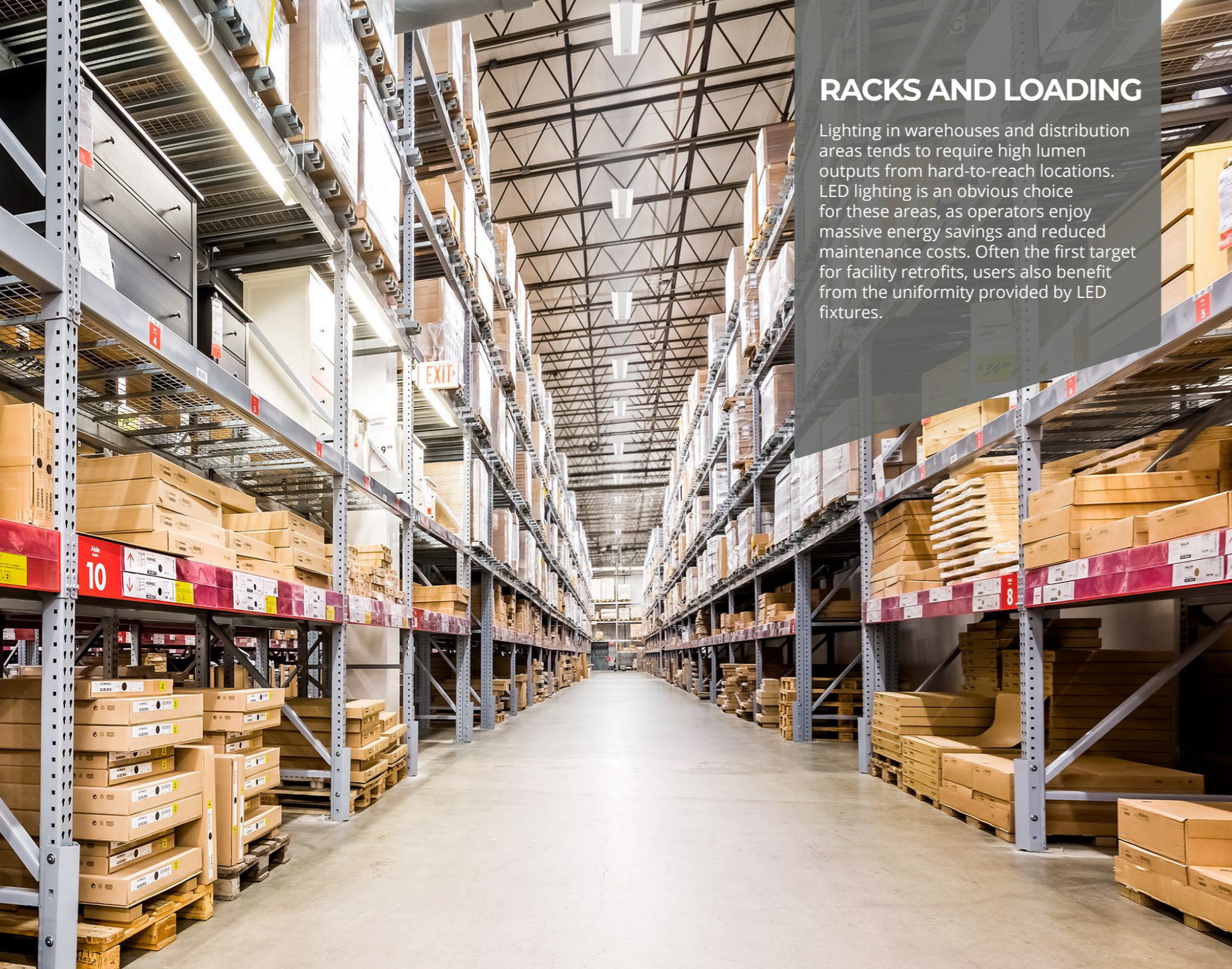




# CONTENT

COLD STORAGE	1
CORRIDORS & STAIRWELLS	3
OFFICE & ADMINISTRATION	5
PACKS AND LOADING	7
RESTROOMS	9
TASK	11
EXTERIOR LIGHTING	13
CONTROLS	15
EMERGENCY	17





## RACKS AND LOADING

Lighting in warehouses and distribution areas tends to require high lumen outputs from hard-to-reach locations. LED lighting is an obvious choice for these areas, as operators enjoy massive energy savings and reduced maintenance costs. Often the first target for facility retrofits, users also benefit from the uniformity provided by LED fixtures.

## ENDEAVOUR HIGH BAY (EDV 2.0)

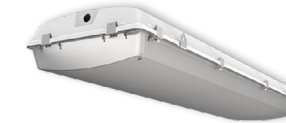


Endeavour 2.0 is the linear high bay of the future. Sturdy - but sleek, it features an aluminum body with curved end caps in white, black or custom finishes to suit even the most unique project aesthetics. Endeavour 2.0 is built to withstand high abuse applications with an IK10 impact rating - the highest impact rating. Endeavour 2.0's upright option provides enhanced full room illumination, while the high performance narrow and wide distribution optics provide superior horizontal or vertical light levels with excellent uniformity.



### EVEREST HIGH BAY (EVT 2.0)

- 12,000 to 60,000 Lumens
- CCT and Lumen Selectable Models
- Patent Pending Field Changeable Lenses
- 16", 30", 36" models



### BLIZZARD HIGH BAY (BL)

- Robust & durable wide body vapor tight high bay
- Extremely high efficacy up to 168 lm/W
- 2ft & 4ft fixture lengths



### UTILITY WRAP (SWR)

- Sleek modern design
- Suitable for continuous run applications
- 2ft and 4ft configurations



### SLIM STRIP (SS 3.0)

- 1.9" Width
- Lumen and CCT Selectable
- 2,000 to 12,000 Lumens
- 2', 4', & 8' Sizes



### ROUND HIGH BAY (RB4)

- Aesthetically pleasing compact round high bay
- Frosted primary lens & diffusers provide soothing optics
- 14,000 to 34,000 lumens



### T5 LAMPS

- Replacements for up to a 54W T5HO lamp
- Meets NSF requirements, plastic construction will not shatter
- Options for plug and play ballast install, line voltage wiring, or external driver, are available



### T8 LAMPS

- Options for plug and play ballast install, line voltage wiring, or external driver, are available
- Options for replacing most linear fluorescent lamps
- Wide light emitting area





## COLD STORAGE

LED technology is ideal for freezers and refrigerated areas. Compared with incandescent or fluorescent lamps, LEDs emit a fraction of the heat and surpass both in terms of performance and product lifespan in cold temperatures. The benefits are reduced strain on cooling systems and reliable lighting in critical cold storage areas.

## AMAZON VAPORTIGHT (WTZ)



WTZ Series is an industry leading vapor tight luminaire robustly designed for a wide variety of environments. Its sealed and gasketed NSF listed fiberglass enclosure is easy to service and clean, ideal for maintaining a safe environment for food and beverage processing. With an enhanced feature set including industry leading ambient operating temperatures, extremely high efficiency, three scalable fixture lengths, wide lumen range, various high impact lens options and multiple mounting options make the WTZ Series the absolute luminaire for any vapor tight application.



### BLIZZARD HIGH BAY (BL)

- Robust & durable wide body vapor tight high bay
- Extremely high efficacy up to 168 lm/W
- 2ft & 4ft fixture lengths



### X SERIES VAPOR TIGHT (WTX)

- Sealed & gasketed vapor tight
- Unique light bar technology
- Slim profile 4' & 8' lengths



### VAPOR TIGHT (VVT)

- Enclosed & gasketed narrow body vapor tight
- Ranging 3,000 to 6,000 lumens
- 2ft & 4ft fixture lengths



### VAPOR TIGHT RETROFIT KIT (VTR)

- Easy upgrade to LED
- Long list of compatible luminaires
- Installs in 4' or 8' housing in 5 mins or less



### VAPOR TIGHT HB RETROFIT (BLR)

- Easy upgrade to LED
- Long list of compatible luminaires
- Installs in 4' housing in 5 mins or less





## CORRIDORS & STAIRWELLS

Industrial stairwells, corridors, and walkways have unique lighting needs. Fixtures may have low mounting heights or need to be installed in awkward corners or areas exposed to the elements. Low-profile, robust, and easy-to-install solutions are recommended for these applications.

## CAVERN STAIRWELL (CV)



ILP's Cavern Stairwell luminaire provides a safe, robust and attractive design ideal for wall or ceiling mounting. As stairwells are unoccupied 90% throughout the day, fully control light levels for both occupied and unoccupied areas with high/low user selectable bi-level dimming options for maximum energy savings. Cavern's specification design, performance, housing lengths, finishes, sensor and emergency options make it the proper choice for stairwell illumination.



### DISCOVERY LINEAR STRIP (DSC)

- Highly configurable spec grade strip
- No visible fasteners providing a smooth uninterrupted design
- Standard Efficacy (SE) and High Efficacy (HE) lumen packages
- 2', 4' & 8' lengths available



### UTILITY WRAP (SWR)

- Sleek modern design
- Suitable for continuous run applications
- 2ft and 4ft configurations



### T8 LAMPS

- Options for plug and play ballast install, line voltage wiring, or external driver, are available
- Options for replacing most linear fluorescent lamps
- Wide light emitting area



### VOLUMETRIC SELECTABLE TROFFER (VST)

- Volumetric design
- Lumen & CCT selectable
- 1x4', 2x2' & 2x4' sizes



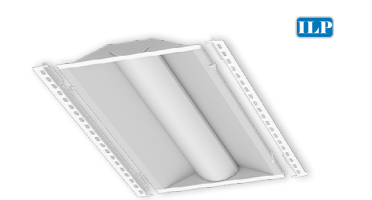
### VOLUMETRIC TROFFER (VOLA)

- Architecturally designed volumetric troffer
- High efficacy - up to 151 lm/W for enhanced energy savings
- Advanced controls options for asset tracking



### CCT SELECT PINFIT

- Patented modular socket design allows for easy switch from G24q to G24d
- Field selectable three color temperatures
- Suitable for electronic ballast, magnetic ballast, or no ballast environment



### TROFFER KIT (LANCE)

- Architecturally designed volumetric troffer retrofit kit
- High efficacy - up to 151 lm/W for enhanced energy savings
- Advanced controls options for asset tracking



### CURVED WRAP (SQ)

- Sleek curved profile wrap fixture
- Suitable for installing in continuous runs
- 2', 4' & 8' lengths



### SELECTFIT G2

- 4", 6", 8" & 9.5" form factors
- Field adjustable 3 level lumen outputs and 5 CCTs
- DualDim for both 120V TRIAC/ELV and 0-10V dimming





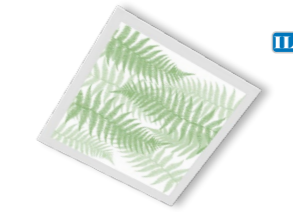
## OFFICE & ADMINISTRATION

Just as important as the machine processes in industrial facilities is the work that happens in the offices and administration areas. Whether the goal is increasing working efficiency or creating a positive work environment, a well-designed lighting system helps employees focus on critical tasks and improves overall well-being.

## ORBIT TRACK LIGHT



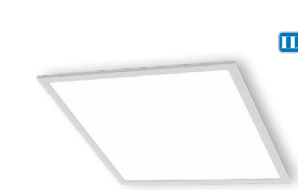
With a variety of mounting options, field-interchangeable TIR optics, snap-in light diffusion accessories, and customizable ordering options, GREEN CREATIVE's new track light is useful in almost any track lighting application. The ORBIT is a compact, lightweight, and robust U.S.-assembled solution which enjoys a 50,000-hour L70 lifetime rating. Select between low and high lumen outputs using the SelectDrive switch on the back of the fixture.



LLP

### ENVI DESIGNER PANEL

- Lumen and CCT Selectable
- Various Lens Options
- Acrylic Drop Lens
- Acoustic Drop Panels



LLP

### BACK LIT FLAT PANEL (VPAN SELECT)

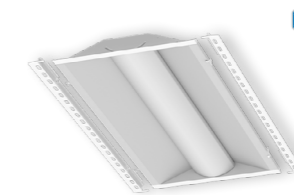
- Lumen selectable output
- Three selectable CCTs
- Low profile design
- 1x4', 2x2' & 2x4' sizes



LLP

### VOLUMETRIC TROFFER (VOLA)

- Architecturally designed volumetric troffer
- High efficacy - up to 151 lm/W for enhanced energy savings
- Advanced controls options for asset tracking



LLP

### TROFFER KIT (LANCE)

- Architecturally designed volumetric troffer retrofit kit
- High efficacy - up to 151 lm/W for enhanced energy savings
- Advanced controls options for asset tracking



GREENCREATIVE

### T8 LAMPS

- Options for plug and play ballast install, line voltage wiring, or external driver, are available
- Options for replacing most linear fluorescent lamps
- Wide light emitting area



GREENCREATIVE

### T5 LAMPS

- Meets NSF requirements, plastic construction will not shatter
- Options for plug and play ballast install, line voltage wiring, or external driver, are available



GREENCREATIVE

### CCT SELECT PINFIT

- Patented modular socket design allows for easy switch from G24q to G24d
- Field selectable three color temperatures
- Suitable for electronic ballast, magnetic ballast, or no ballast environment



GREENCREATIVE

### SELECTFIT G2

- 4", 6", 8" & 9.5" form factors
- Field adjustable 3 level lumen outputs and 5 CCTs
- DualDim for both 120V TRIAC/ELV and 0-10V dimming

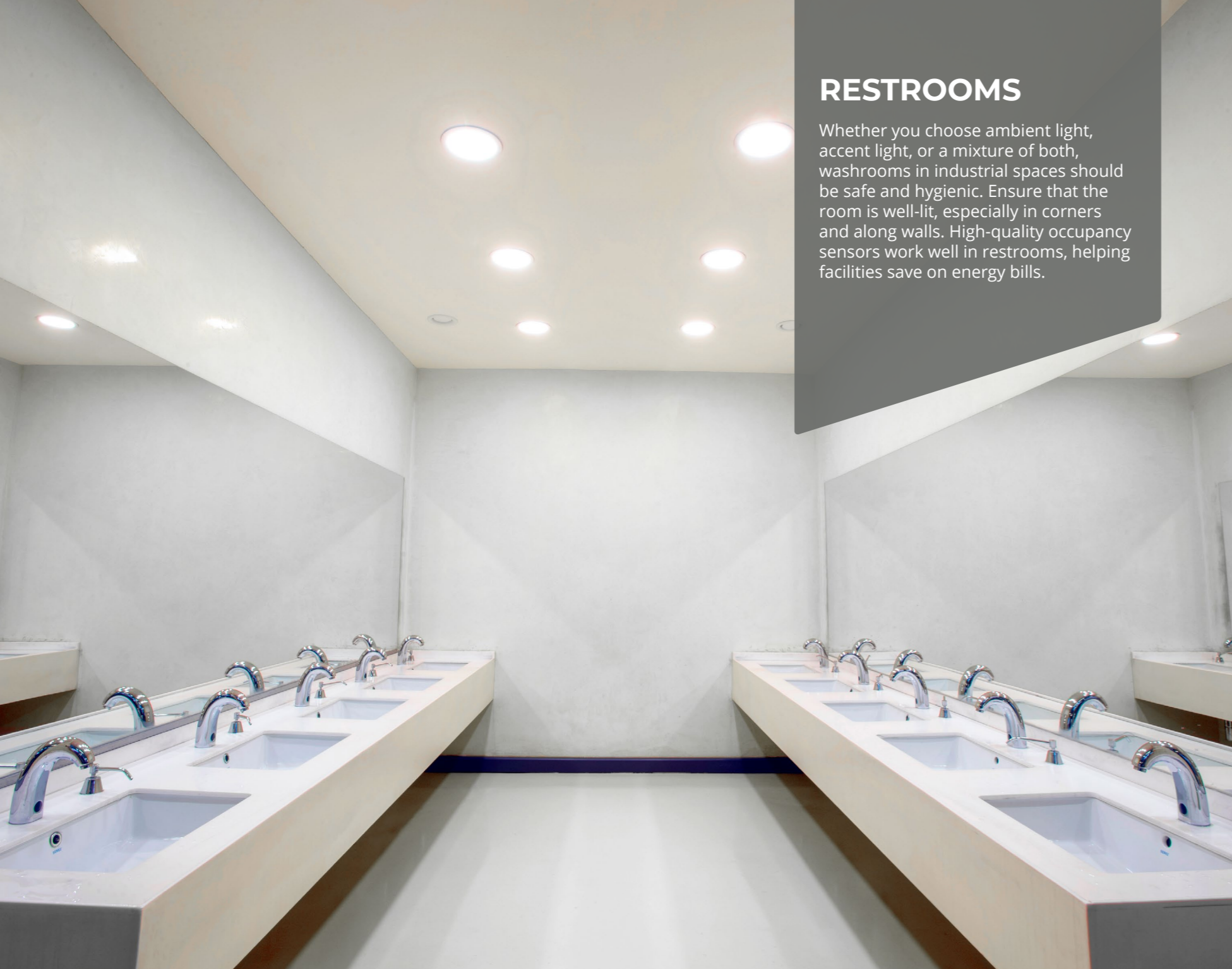


GREENCREATIVE

### SPECFIT

- 4", 6", 8" & 9.5" form factors
- Adjustable lumen output
- TRUE CHROMA version available





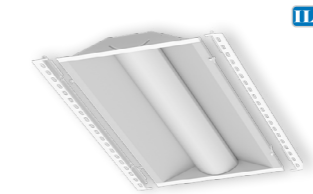
## RESTROOMS

Whether you choose ambient light, accent light, or a mixture of both, washrooms in industrial spaces should be safe and hygienic. Ensure that the room is well-lit, especially in corners and along walls. High-quality occupancy sensors work well in restrooms, helping facilities save on energy bills.

## CLICK WITH SENSOR



The integral passive infrared sensor of the CLICK surface mount fixture helps deliver a balance between high quality 90 CRI light and energy savings in variable occupancy spaces. Turning on instantly with room occupancy and off after ten minutes of room vacancy, the CLICK provides easy and reliable fixture control and performance.



TL.P

### TROFFER KIT (LANCE)

- Architecturally designed volumetric troffer retrofit kit
- High efficacy - up to 151 lm/W for enhanced energy savings
- Advanced controls options for asset tracking



TL.P

### VOLUMETRIC TROFFER (VOLA)

- Architecturally designed volumetric troffer
- High efficacy - up to 151 lm/W for enhanced energy savings
- Advanced controls options for asset tracking



TL.P

### ENVI DESIGNER PANEL

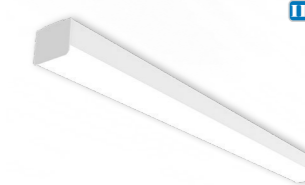
- Lumen and CCT Selectable
- Various Lens Options
- Acrylic Drop Lens
- Acoustic Drop Panels



TL.P

### BACK LIT FLAT PANEL (VPAN SELECT)

- Lumen selectable output
- Three selectable CCTs
- Low profile design
- 1x4', 2x2' & 2x4' sizes



TL.P

### DISCOVERY LINEAR STRIP (DSC)

- Highly configurable spec grade strip
- No visible fasteners providing a smooth uninterrupted design
- Standard Efficacy (SE) and High Efficacy (HE) lumen packages
- 2', 4' & 8' lengths available



GREENCREATIVE

### A LAMPS

- Suitable to replace 60W, 75W, 100W incandescent lamps
- Provides comfortable, diffused light
- Dimmable with forward and reverse phase controls



GREENCREATIVE

### BR LAMPS

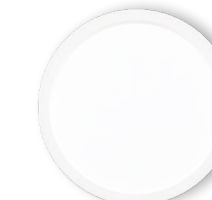
- Suitable to replace up to 65W incandescent lamps
- Provides comfortable, diffused light
- Dimmable with forward and reverse phase controls



GREENCREATIVE

### T8 LAMPS

- Options for plug and play ballast install, line voltage wiring, or external driver, are available
- Options for replacing most linear fluorescent lamps
- Wide light emitting area



GREENCREATIVE

### 3NI

- 5", 7", 9" and 12" surface mount
- Adjustable CCT
- Direct ceiling, recessed housing & J-Box mounting options





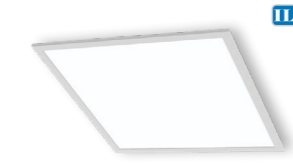
## TASK

In addition to overhead lighting, industrial processes may require extra lighting for tooling or assembly work. These lights tend to have high lumen outputs and low mounting heights. Additionally, they often need to withstand sprays, debris, and impacts.

## SLIM STRIP (SS 3.0)



The SS 3.0 slim strip provides a modern and architectural design that can be ceiling, wall and suspension mounted. With a sleek ultra slim 1.9" width, multiple lengths, and low acquisition cost, the SS 3.0 slim strip provides versatility and energy savings desired for new construction and retrofit applications.



### BACK LIT FLAT PANEL (VPAN SELECT)

- Lumen selectable output
- Three selectable CCTs
- Low profile design
- 1x4', 2x2' & 2x4' sizes



### AMAZON VAPORTIGHT (WTZ)

- Sealed & gasketed vapor tight
- Durable construction for abusive environments
- 2', 4' & 8' lengths



### CURVED WRAP (SQ)

- Sleek curved profile wrap fixture
- Suitable for installing in continuous runs
- 2', 4' & 8' lengths



### VAPOR TIGHT (VVT)

- Enclosed & gasketed narrow body vapor tight
- Ranging 3,000 to 6,000 lumens
- 2ft & 4ft fixture lengths



### LINEAR STRIP (VS 3.0)

- 2.8" Width
- Lumen and CCT Selectable
- 2,000 to 12,000 Lumen
- 2', 4', & 8' Sizes



### DISCOVERY LINEAR STRIP (DSC)

- Highly configurable spec grade strip
- No visible fasteners providing a smooth uninterrupted design
- Standard Efficacy (SE) and High Efficacy (HE) lumen packages
- 2', 4' & 8' lengths available



### T8 LAMPS

- Options for plug and play ballast install, line voltage wiring, or external driver, are available
- Options for replacing most linear fluorescent lamps
- Wide light emitting area



### T8 UEB LAMPS

- For both single ended and double ended bypass installations
- UL Type B - work off 120-277V line voltage
- 2', 3' and 4' lengths available
- Work with existing shunted or non-shunted lamp holders



### T5 LAMPS

- Replacements for up to a 54W T5HO lamp
- Meets NSF requirements, plastic construction will not shatter
- Options for plug and play ballast install, line voltage wiring, or external driver, are available





## EXTERIOR LIGHTING

Outdoor lighting in industrial areas should prioritize safety and efficiency. Applications range from brightening parking lots and loading bays to illuminating signage and outdoor catwalks. And because many facilities are open 24/7, it is critical that these lights have the highest possible lifetime ratings.

## SKYLINE AREA & FLOOD (SA/SF)



The Skyline's sleek aesthetic makes it perfectly-suited for warehouse area & flood applications. Designed for both new construction and retrofit, the Skyline provides a one-for-one solution for replacing legacy metal halide or high pressure sodium luminaires. Priced for payback, it's cost effective die-cast aluminum housings comes in 3-sizes and DLC Premium efficacies, making it the best choice for low acquisition cost and high energy savings. The highly configurable Skyline provides superior illumination, reliability, and ease of installation, exceeding most application requirements.



### VIEWPOINT AREA LIGHT (VA)

- Type 3, 4, & 5 distributions
- Lumen selectable from 14,000 to 42,000 lumens
- Adjustable Pole(Rd/Sq), Wall, or Slip-fitter mounting options



### VIEWPOINT FLOOD (VF)

- 5 luminaire scales delivering 2,000-40,000 lumens
- CCT & lumen selectable (up to 14k lumens)
- Knuckle, Trunnion, Slip-Fitter, & Pole Mount Options



### VIEWPOINT WALL PACK (VWM)

- Full cutoff type 3 & 4 distributions
- CCT & lumen selectable (up to 14k lumens)
- Optional sensors and battery backups



### FULL CUTOFF WALL PACK (WPC)

- 2 sizes with multiple optical distributions
- Legacy aesthetic with next generation performance
- Sensor & wireless controls ready



### SLIM WALL PACK (SWP)

- Fully adjustable with 5 light levels & 2 sizes
- CCT color selectable
- Optional sensors and battery backups



### OW SERIES WALL PACK (OW)

- 3 luminaire scales delivering 1,000-16,000 lumens
- CCT & lumen selectable
- Integral battery backups available



### SQUARE CANOPY (CP)

- Save up to 85% in energy
- White or bronze finish
- Microwave sensor ready



### PARKING AND CANOPY (UFO)

- Visually comfortable illumination
- 10% uplight reduces cave effect
- Sensor & wireless controls ready



### POLES & BRACKETS

- Straight square steel poles up to 40'
- Multiple bullhorn, wall, and wood pole mounting options
- Adapters for every site scenario





## CONTROLS

The ability to control your light makes all the difference. Quality dimming solutions allow operators to set the mood of activity or to save energy during daytime hours. Smart controls and occupancy sensors can further reduce electricity consumption, resulting in massive savings over the long term. We provide various integrated control solutions that meet building codes compliance for ASHRAE 90:1, Title 24, etc.



## EMERGENCY

Safety and security are essential components of any building's lighting design. In the event of a power failure, industrial spaces need a reliable emergency lighting solution. Emergency Drivers and Inverters are ideal for providing backup power if an outage occurs.

### CONTROLS SOLUTIONS

### EMERGENCY SOLUTIONS



- Economical grouping solution
- Occupancy & daylight functions
- Programmable with phone app
- Wireless scalable design
- No gateway required



- Bluetooth technology allows for grouping and scheduling with ease
- Compatible both indoors and outdoors
- Easy integration into existing BMS systems supporting all scales of projects with a cloud-based structure



- Occupancy & RF solutions
- Occupancy, daylight, & demand response capabilities
- Wireless scalable design
- Vive PowPak Dimming Module with 0-10V



Athena wireless node is a radio frequency (RF) device that enables simple, digital control of individual light fixtures in an Athena control system. Enables individual wireless control of each fixture in an Athena control system. Accommodates zone and control changes without rewiring. All drivers on the link are controlled as a single zone. Provided with factory installed components only. Lutron Athena system provided by others.

#### ILP EXEM



- Full line of signs and lights for code compliance
- All products feature thermoplastic housings and LED lighting heads
- Standard and High Output available for varying mounting heights and spacings
- DOE and CEC registered



- Multiple wattage selections from 5W to 24W
- Specifically designed to work with a wide variety of GREEN CREATIVE's lamps and fixtures
- Meets or exceeds all NEC and life safety code emergency lighting requirements
- CA Title 20 compliant version available
- Additional accessories options for various mounting methods



- Industry's first CCT select emergency T8
- Constant power output in emergency mode for a minimum of 90 minutes
- Field selectable three color temperatures
- Continuous self-test design to ensure tube safety



- 24.5W Constant current output power emergency battery backup perfect for high mounting applications to meet life safety codes.
- Built-in maintenance-free Ni-Cd battery
- Compact metal case with external installation
- Compliant to NFPA 101 safety regulation's requirements on Emergency power supply



**WAREHOUSE &  
DISTRIBUTION  
APPLICATION  
BROCHURE**



**GREENCREATIVE**

[www.greencreative.com](http://www.greencreative.com)



[www.ilp-inc.com](http://www.ilp-inc.com)

**An ILLUMUS Brand**

[www.ILLUMUS.com](http://www.ILLUMUS.com)