



X SERIES

VAPOR TIGHT





X SERIES

VAPOR TIGHT

Behind the Technology:

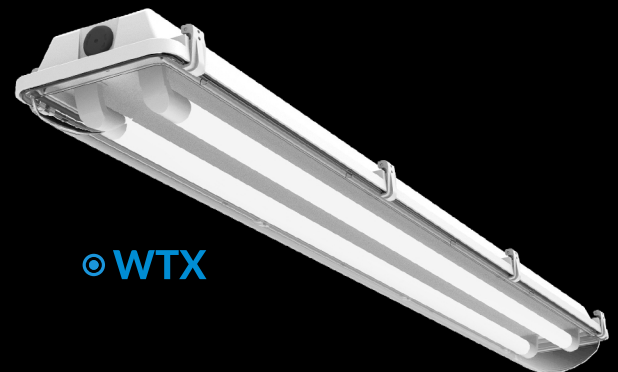
The X Series Line of products utilizes a patent pending integrated light engine design. Each encompasses a LED board and integrated driver, combined with a fixture housing, to create an ETL and DLC listed solid state LED Fixture.

Specifications:

- High Efficacy – Up to 138 lm/W
- 4ft & 8ft Lengths
 - Slim Version – 4.4" Wide (WTXS)
 - Wide Version – 7.1" Wide (WTX)
- Lumen Packages – 1,700 to 10,000
- Fiberglass Body Attributes
 - IP65, IP66, IP67
 - NEMA4X
 - NSF Rated
- Multiple Lens Options
 - Clear, Frosted, Polycarbonate
- 4000K & 5000K
- DLC Premium



WTXS



WTX

WTX Options:

- Sensors
- Battery Backups
- Stainless Steel Latches
- Tamperproof Screws
- Surge Protector
- 347V & 480V

Applications Include:

- Parking Garages
- Pool Area
- Food Processing & Preparation
- Car Washes
- Manufacturing Plants
- Warehouses & Distribution Centers

